



[Manuals.plus](#) /

› [Elikliv](#) /

› Elikliv Compact Wood Router Tool 800W - Instruction Manual

Elikliv B097QTS63X

Elikliv Compact Wood Router Tool 800W Instruction Manual

Model: B097QTS63X

1. INTRODUCTION

This manual provides essential information for the safe and effective operation, maintenance, and troubleshooting of your Elikliv Compact Wood Router Tool. Please read these instructions thoroughly before first use and retain for future reference.



Image 1.1: The Elikliv Compact Wood Router Tool shown with various accessories, including router bits and guides.

2. SAFETY INSTRUCTIONS

Always observe basic safety precautions to reduce the risk of fire, electric shock, and personal injury.

- **Read all instructions:** Familiarize yourself with the tool's operation and limitations.
- **Wear appropriate safety gear:** Always use eye protection, hearing protection, and a dust mask.
- **Secure workpiece:** Ensure the material being routed is firmly clamped to prevent movement.
- **Keep work area clean:** Cluttered areas invite accidents.
- **Avoid accidental starting:** Ensure the switch is in the OFF position before plugging in the tool.
- **Do not overreach:** Maintain proper footing and balance at all times.
- **Disconnect power:** Always unplug the tool before changing bits, making adjustments, or performing maintenance.
- **Use the right tool:** Do not force a small tool or attachment to do the job of a heavy-duty tool.

3. PACKAGE CONTENTS

Verify that all items listed below are present in your package. If any items are missing or damaged, contact customer support.

- Elikliv Compact Wood Router Tool (800W)
- 15-piece 1/4 inch (6.35mm) Router Bit Set, including:
 - 5 Straight Bits
 - 2 Cove Box Bits
 - 2 Round Over Bits
 - 1 Dovetail Bit
 - 1 Bearing Flute Trim Bit
 - 1 "V" Grooving Bit
 - 1 Roman Ogee Bit
 - 1 Eearngcoie Box Bit
- Edge Guide
- Roller Guide
- 2 Wrenches
- 6 Carbon Brushes (replacement set)

Accessories included



Trimming guide wheel



Linear auxiliary guide ruler



Wrench*2



Carbon brush*6

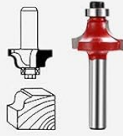
15-pieces 1/4(6.35mm) milling cutter set



Straight Bit
3mm



Core Box Bit
R6mm



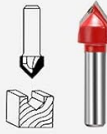
Roman Ogeeing Bit
R4mm



Cove Box Bit
R3mm



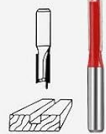
Cove Bit
R6.3mm



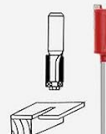
"V" Type Slotting
Cutter 12.7mm



45° Chamfer
12.7mm



Straight Bit
6mm



Mortising Bit
12.7mm



Corner Round
R9.5mm



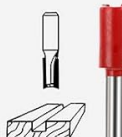
Corner Round
R6.35mm



Dovetail Bit
12.7mm



Straight Bit
12.7mm



Straight Bit
12mm



Straight Bit
16mm

Image 3.1: Visual representation of the accessories included, such as guides, wrenches, carbon brushes, and the 15-piece router bit set.

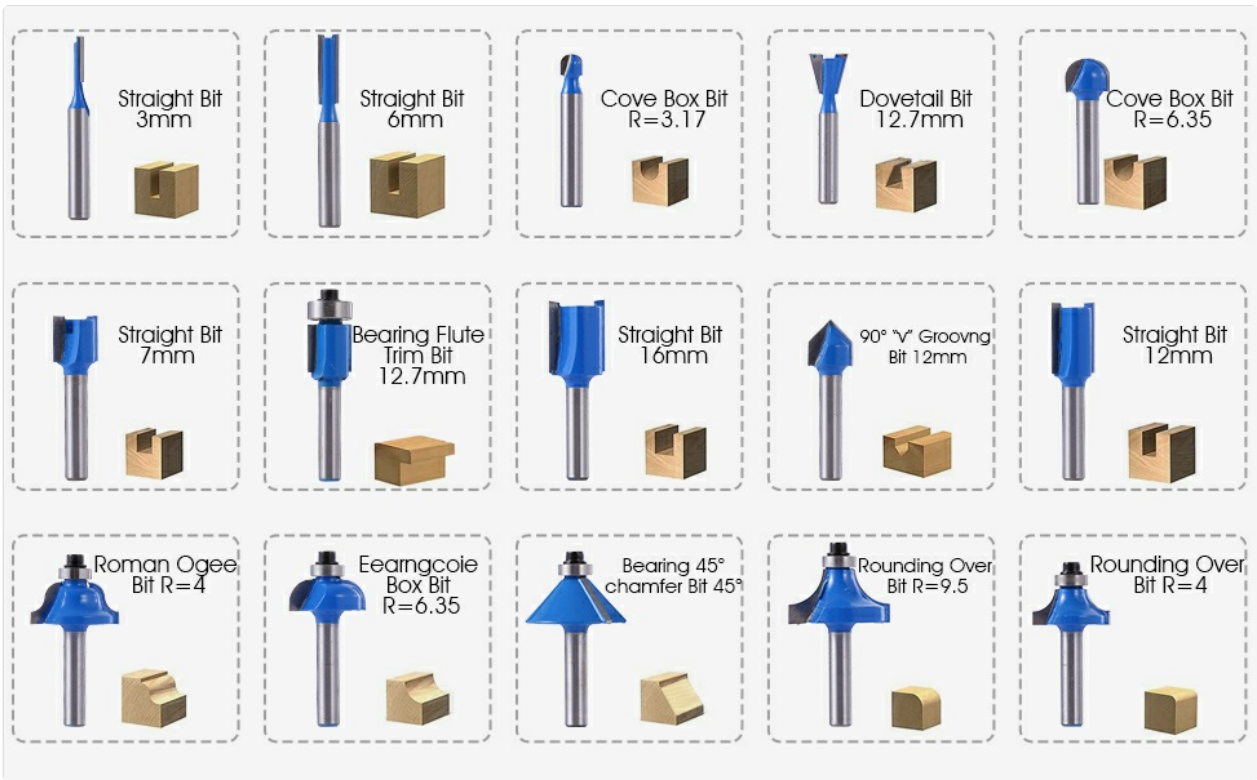


Image 3.2: A detailed view of the 15-piece 1/4 inch (6.35mm) milling cutter set, showing various bit profiles and their dimensions.

4. PRODUCT OVERVIEW

Familiarize yourself with the components of your router tool.

Product composition



Image 4.1: Diagram illustrating the main components of the router, including the On/Off switch, vent, external carbon brush port, trimming host, base height adjustment button, scale, non-slip silicone handle, 6.35mm milling cutter installation port, and transparent base.

- **On/Off Switch:** Controls power to the motor.
- **Vent:** Ensures proper motor cooling during operation.
- **External Carbon Brush Port:** Allows for easy replacement of carbon brushes.
- **Trimming Host:** The main body of the router containing the motor.
- **Base Height Adjustment Button:** Used to precisely set the cutting depth.
- **Scale:** Provides visual reference for cutting depth adjustments.
- **Non-slip Silicone Handle:** Enhances grip and comfort during use.
- **6.35mm Milling Cutter Installation Port:** Where router bits are inserted and secured.
- **Transparent Base:** Allows for clear visibility of the cutting area for precise operation.

5. SETUP AND ASSEMBLY

5.1 Installing Router Bits

Follow these steps to safely install or replace router bits:

1. Ensure the router is unplugged from the power source.
2. Use the two provided wrenches to loosen the chuck nut.
3. Insert the desired 1/4 inch (6.35mm) router bit into the milling cutter installation port. Ensure the bit is fully seated but not bottomed out.
4. Tighten the chuck nut firmly with both wrenches to secure the bit. Do not overtighten.

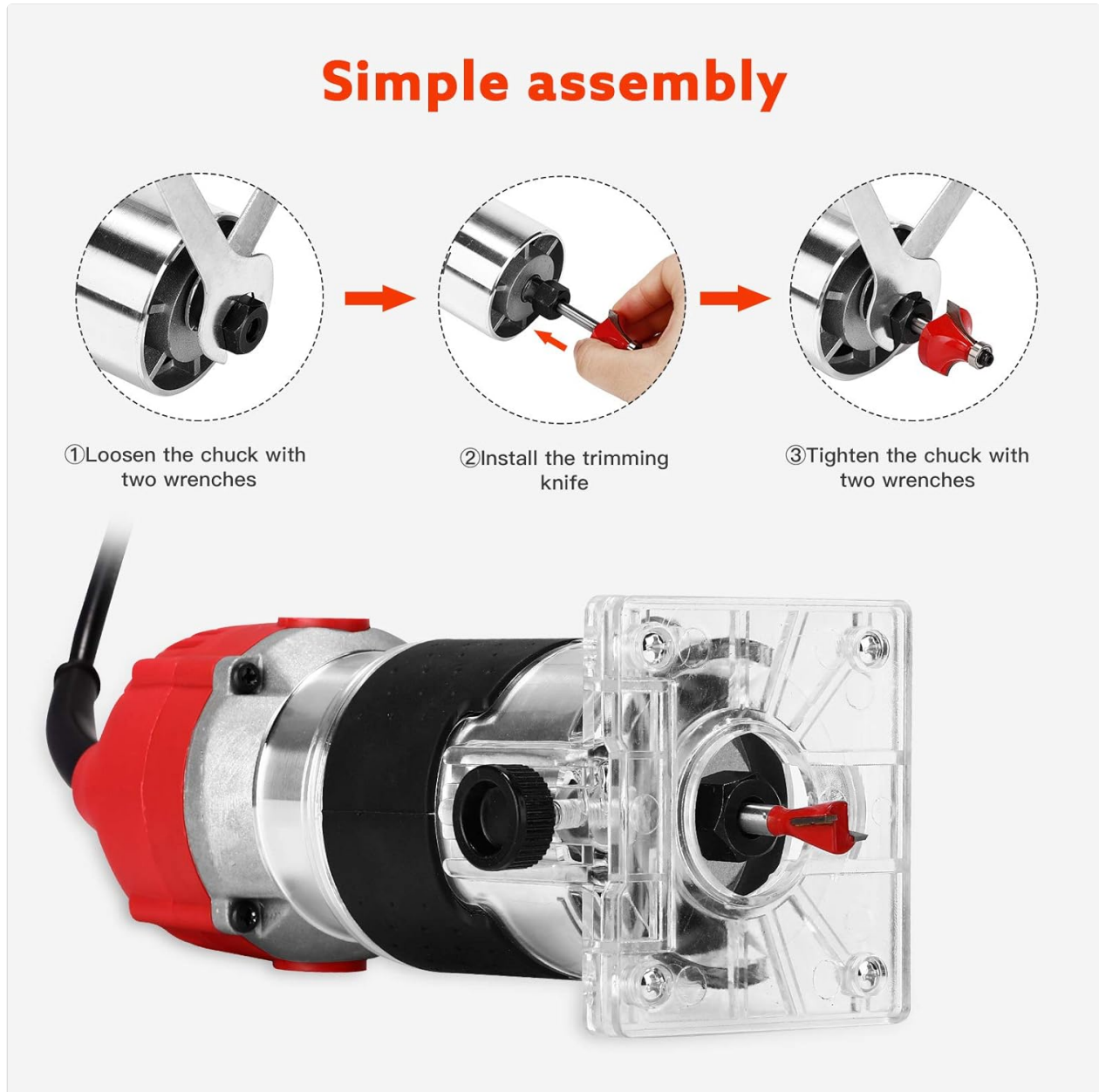


Image 5.1: Step-by-step guide showing how to loosen the chuck, install a trimming knife (router bit), and tighten the chuck using the provided wrenches.

5.2 Installing Guides

The router comes with an edge guide and a roller guide for various applications. Select the appropriate guide for your task.

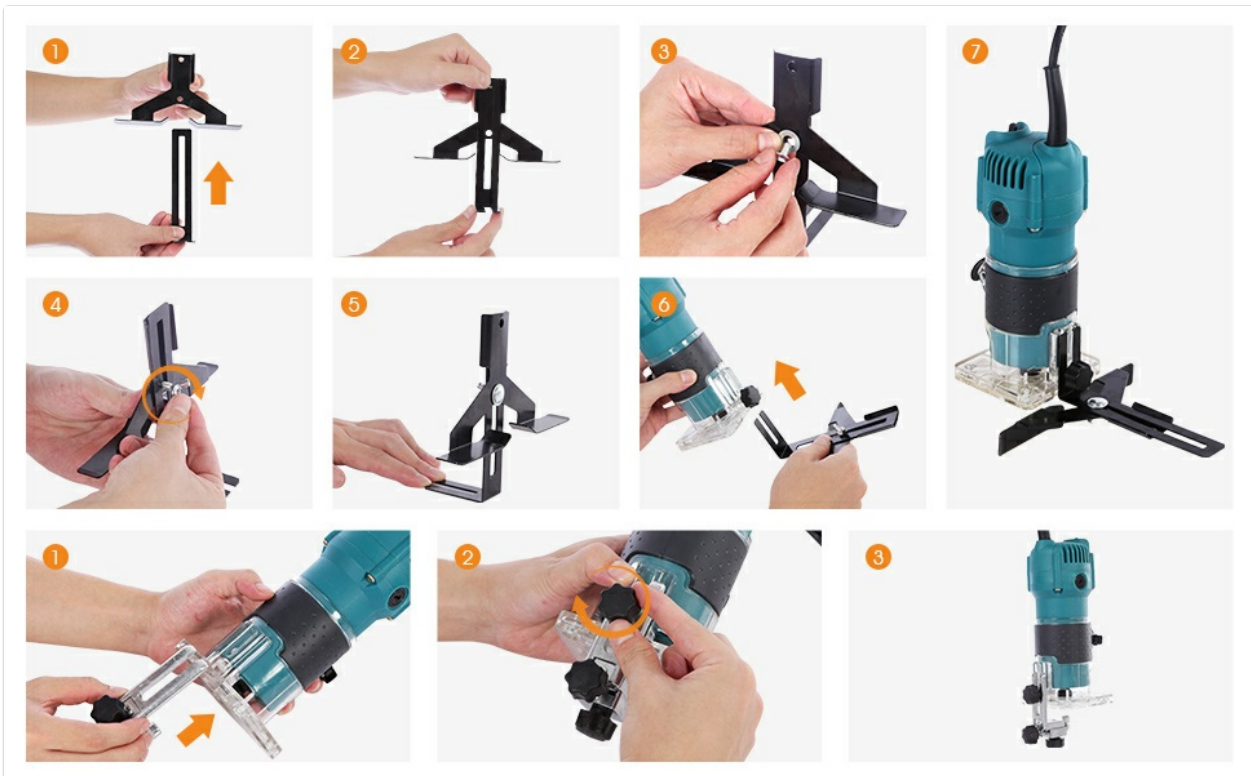


Image 5.2: Visual instructions for assembling and attaching the linear auxiliary guide ruler and the trimming guide wheel to the router base.

Refer to the diagram for guide assembly and attachment. Ensure guides are securely fastened before operation.

6. OPERATING INSTRUCTIONS

6.1 Powering On/Off

To turn the router ON, slide the power switch to the 'I' position. To turn it OFF, slide the switch to the 'O' position. Always ensure the router bit is clear of the workpiece before starting.

6.2 Adjusting Cutting Depth

The transparent base allows for precise depth adjustment. Loosen the base height adjustment button, move the router up or down along the scale to the desired depth, and then firmly tighten the adjustment button.

Transparent base, visible operation

Scale display, precise machining operation depth



Image 6.1: The transparent base of the router, highlighting the scale for precise depth adjustment and visibility during operation.

6.3 General Operation

This router is designed for various woodworking applications including chamfering, grooving, trimming, punching, cutting, engraving, and rough processing of wood. The ergonomic design and non-slip handle provide comfort and control.

- Always make sure the workpiece is stable and secured.
- Start the router before contacting the workpiece.
- Move the router smoothly and consistently across the workpiece. Avoid sudden movements.
- For deeper cuts, make multiple passes, gradually increasing the depth with each pass.
- Always route against the rotation of the bit to maintain control.

Application



Image 6.2: Examples of woodworking applications, including shaping wood blocks, carving, and trimming edges, demonstrating the versatility of the tool.

7. MAINTENANCE

Regular maintenance ensures the longevity and optimal performance of your router tool.

7.1 Cleaning

After each use, unplug the tool and clean any dust and debris from the vents and base using a soft brush or compressed air. Do not use solvents or harsh chemicals.

7.2 Carbon Brush Replacement

The carbon brushes are wear items and will need replacement over time. When the motor performance decreases or sparks become excessive, it may be time to replace them.

1. Ensure the router is unplugged.
2. Locate the external carbon brush ports on the side of the motor housing.
3. Use a screwdriver to remove the caps covering the carbon brushes.

4. Carefully remove the old carbon brushes.
5. Insert new carbon brushes, ensuring they are oriented correctly.
6. Replace the caps and tighten them securely.



Image 7.1: Illustration of the carbon brush replacement process, showing how to unscrew the cap and remove/insert the carbon brush.

8. TROUBLESHOOTING

If you encounter issues with your router, refer to the following common problems and solutions:

Problem	Possible Cause	Solution
Tool does not start	No power supply; Faulty switch; Worn carbon brushes	Check power connection; Test switch; Replace carbon brushes.
Excessive sparking from motor	Worn carbon brushes; Dirty commutator	Replace carbon brushes; Clean commutator (professional service recommended).
Poor cut quality or burning wood	Dull router bit; Incorrect feed rate; Incorrect bit for material	Replace or sharpen bit; Adjust feed rate; Use appropriate bit for the material.
Excessive vibration	Loose router bit; Damaged bit; Unbalanced bit	Ensure bit is securely tightened; Replace damaged or unbalanced bits.

If the problem persists after attempting these solutions, please contact Elikliv customer support.

9. SPECIFICATIONS

Specification	Value
Brand	Elikliv
Model Number	B097QTS63X
Power Source	Electric

Specification	Value
Motor Power	800W
Maximum Rotational Speed	30000 RPM
Collet Size	1/4 inch (6.35mm)
Base Type	Fixed, Transparent
Material	Copper (motor)
Item Weight	5.29 pounds
Package Dimensions	10 x 7.44 x 6.22 inches

10. WARRANTY AND SUPPORT

Elikliv provides a one-year warranty for this product and lifetime technical support. If you have any questions, require assistance, or need to claim warranty service, please contact us by email. We are committed to replying to your inquiries within 24 hours.