

CAMPLUX ENJOY OUTDOOR LIFE Stainless Steel 1 Burner

Camplux Single Burner Propane Stove User Manual

Brand: CAMPLUX ENJOY OUTDOOR LIFE | Model: Stainless Steel 1 Burner

1. INTRODUCTION

This user manual provides essential information for the safe and efficient operation, maintenance, and troubleshooting of your Camplux Single Burner Propane Stove. Designed for portability and outdoor use, this stove offers a reliable cooking solution for camping, picnics, tailgating, and home emergencies. Please read this manual thoroughly before initial use and retain it for future reference.



Image 1.1: The Camplux Single Burner Propane Stove, showcasing its compact design and included gas regulator and hose.

2. SAFETY INFORMATION

Your safety is paramount. This appliance uses propane gas, which is flammable and can be explosive if not handled correctly. Always follow these safety guidelines:

- **Leakage Test:** Before each use, a leakage test is required. Apply soapy water to all joints of the gas regulator and hose connection. If bubbles appear or you hear a hissing sound, do not use the stove and contact customer support immediately. Refer to online resources like YouTube for visual guides on performing a leakage test if unsure.
- Use outdoors only in a well-ventilated area.
- Keep away from flammable materials.
- Do not leave the stove unattended while in operation.
- Ensure the stove is on a stable, level surface.
- Keep children and pets away from the operating stove.
- Allow the stove to cool completely before moving or storing.

3. PRODUCT COMPONENTS

The Camplux Single Burner Propane Stove package includes the following:

- Tabletop Gas Stove (Stainless Steel 1 Burner)
- CSA Certified Gas Regulator
- 5ft Hose

EASY INSTALLATION & USE



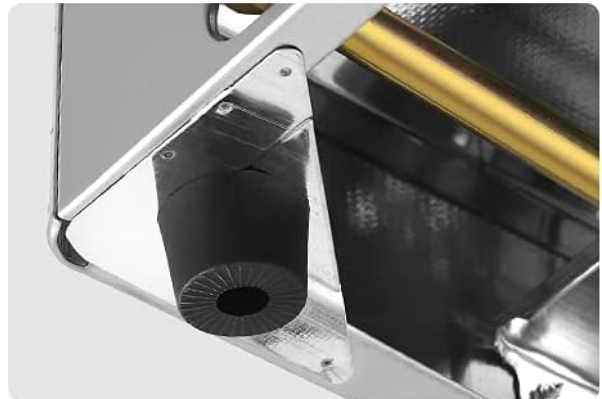
1 Piezoelectric Ignition Individual Burner Control



2 392°F High-Temperature Cast Iron Burner



3 CSA Certified Gas Regulator and 5ft Hose



4 Wearable Feet-stable, ABS Material, Non-slip & Anti-push

Image 3.1: Key components and features of the stove, highlighting the control knob, burner, hose, and stable feet.

4. SPECIFICATIONS

Brand	CAMPLUX ENJOY OUTDOOR LIFE
Model	Stainless Steel 1 Burner
Heat Output	9,800 BTU/Hr
Material	Food-Grade 304 Stainless Steel (body), High-Temperature Cast Iron (burner)
Dimensions (D x W x H)	15.16" x 10.83" x 5.31"
Item Weight	4.37 lbs

Controls Type	Push Button (Piezo Ignition)
Fuel Type	Liquid Propane
Recommended Pot Diameter	5-8.6 inches

COMPACT SIZE & LIGHTWEIGHT

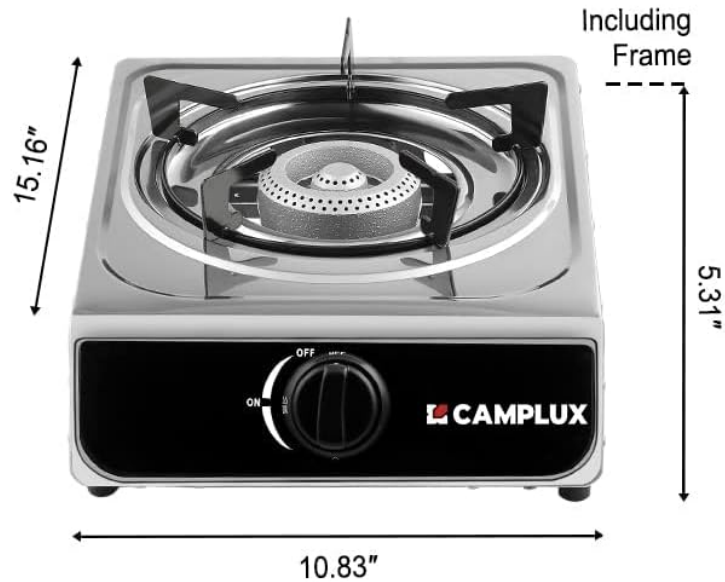


Image 4.1: Dimensions and weight of the stove for easy transport and storage.

5. SETUP

1. Unpack all components and ensure they are intact.
2. Place the stove on a stable, level, non-combustible surface outdoors.
3. Connect the 5ft hose to the gas regulator.
4. Connect the gas regulator to a standard propane cylinder (not included). Ensure all connections are tight.
5. Perform a leakage test as described in the Safety Information section (Section 2).
6. Ensure the control knob on the stove is in the "OFF" position before opening the propane cylinder valve.

6. OPERATING INSTRUCTIONS

6.1. Ignition

1. Open the valve on your propane cylinder.
2. Push down and turn the control knob on the stove counter-clockwise to the "ON" position. You should hear a click as the piezoelectric igniter sparks.
3. If the burner does not ignite immediately, turn the knob back to "OFF", wait a few seconds, and repeat the ignition process.
4. Once ignited, adjust the flame to your desired heat level by rotating the control knob.

9,800 BTU HIGH HEAT OUTPUT



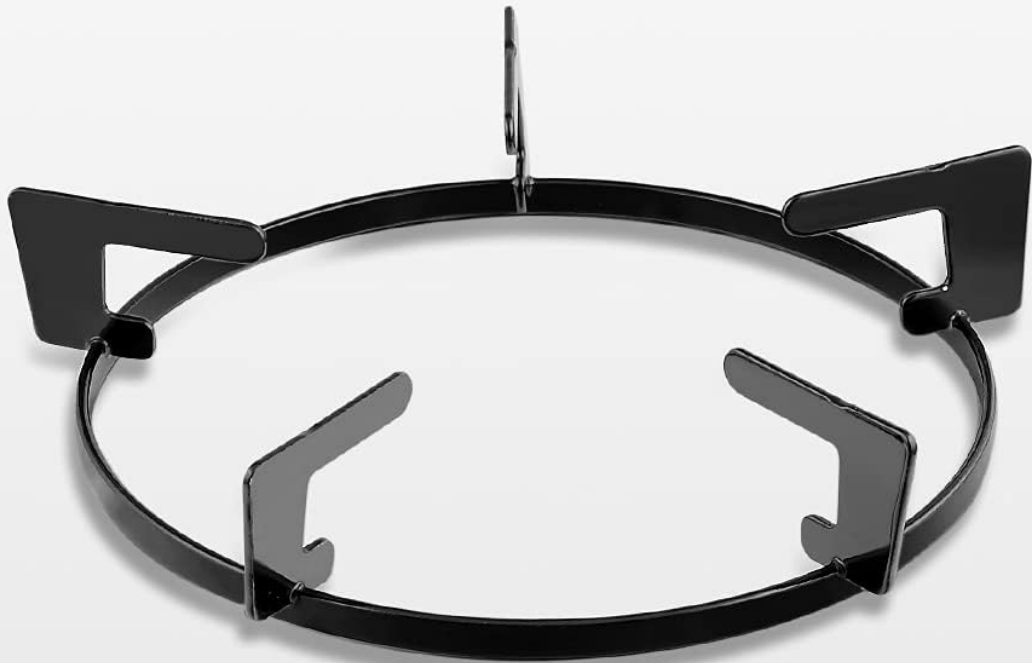
Image 6.1: The stove's burner in operation, demonstrating its 9,800 BTU high heat output.

6.2. Cooking

- Place your cookware (recommended diameter 5-8.6 inches) securely on the stove's grate. The design ensures stability for various pot and pan sizes.
- Adjust the flame as needed for cooking.

HOLD WOKS & PANS STEADILY

Use 5-8.6" Pots for More Uniform Heating



Kettle



Soup Pot



Woks



Saucepan

Image 6.2: The stove's grate designed to hold various cookware steadily.

6.3. Shutting Down

1. Turn the control knob on the stove clockwise to the "OFF" position.
2. Close the valve on the propane cylinder.
3. Allow the stove to cool completely before disconnecting the gas supply or moving the unit.

7. MAINTENANCE AND CLEANING

Regular cleaning and maintenance will prolong the life of your stove.

- Ensure the stove is completely cool before cleaning.
- The stove is made of food-grade 304 stainless steel, which is corrosion-resistant and easy to clean. Wipe down surfaces with a damp cloth and mild detergent.
- For stubborn stains, use a non-abrasive cleaner suitable for stainless steel.
- Clean the cast iron burner and grate as needed, removing any food debris.
- Store the stove in a dry, protected area when not in use.

EASY TO CLEAN

Food-Grade 304 Stainless Steel



Image 7.1: Cleaning the stainless steel surface of the stove.

8. TROUBLESHOOTING

Problem	Possible Cause	Solution
Stove does not ignite.	No gas flow; igniter not sparking; low propane.	Ensure propane cylinder valve is open. Check for kinks in the hose. Verify igniter is clicking. Check propane level. Perform leakage test.
Flame is weak or inconsistent.	Low propane; partially closed valve; clogged burner.	Check propane level. Ensure all valves are fully open. Clean burner ports if obstructed.
Gas smell detected.	Gas leak.	Immediately turn off gas at the cylinder. Perform a thorough leakage test. Do not use if leak persists. Contact customer support.

9. USAGE SCENARIOS

The Camplux Single Burner Propane Stove is ideal for a variety of outdoor cooking needs:

- **Camping:** Prepare hot meals and beverages at your campsite.
- **RV Travel:** A compact and efficient cooking option for your recreational vehicle adventures.

- **Picnics & Tailgating:** Enjoy freshly cooked food at outdoor gatherings.
- **Home Emergency:** A reliable backup cooking method during power outages.



Image 9.1: The stove in an outdoor setting, perfect for camping and travel.

9.1. Product Overview Video

Your browser does not support the video tag.

Video 9.1: An overview video showcasing various Camplux outdoor products in use, including cooking on a portable stove, demonstrating the brand's commitment to outdoor living.

10. WARRANTY AND SUPPORT

For warranty information, technical support, or any inquiries regarding your Camplux Single Burner Propane Stove, please contact the manufacturer directly. Refer to the product packaging or the official Camplux website for the most up-to-date contact details.

Manufacturer: Camplux

