

Manuals.plus /

- › Squire /
- › Squire CP50 Heavy-Duty 4-Wheel Combination Padlock User Manual

## Squire SQ-CP50/ATLO/2.5BLUE

# Squire CP50 Heavy-Duty 4-Wheel Combination Padlock User Manual

Model: SQ-CP50/ATLO/2.5BLUE | Brand: Squire

## INTRODUCTION

---

This manual provides comprehensive instructions for the setup, operation, and maintenance of your Squire CP50 Heavy-Duty 4-Wheel Combination Padlock. Designed for high security and durability, this padlock offers keyless convenience with robust construction suitable for various indoor and outdoor applications.





Figure 1: Front view of the Squire CP50 Heavy-Duty Combination Padlock, showcasing its blue body and 4-wheel combination dial.

## KEY FEATURES

---

- **Keyless Security:** Utilizes a 4-digit combination, eliminating the need for keys and offering up to 10,000 possible combinations.
- **Durable Construction:** Features a zinc die-cast body and a robust stainless steel shackle, providing long-lasting protection.
- **Weatherproof Design:** Engineered with corrosion-resistant materials and a dual-compound body cover, tested for over 312 hours in salt spray to withstand harsh weather conditions.
- **Ergonomic Grip:** Equipped with ergonomic rubber sides for improved handling, especially in wet conditions.
- **Versatile Application:** Ideal for securing lockers, gates, sheds, garages, and marine applications due to its

compact size and weather resistance.

- **Recodable Dial:** The 4-wheel dial is fully recodable, allowing you to change your combination as needed.



Figure 2: Diagram illustrating the key features of the Squire CP50 padlock, including its rustproof shackle, ergonomic grip, and weatherproof cover.

## SETUP: SETTING YOUR COMBINATION

Your Squire CP50 padlock is factory preset to **0000**. Follow these steps carefully to set your personalized combination. The combination can only be changed when the padlock is in the open position.

1. **Open the Padlock:** Align the dials to the preset code **0000**. Press the button located at the bottom of the padlock to release the shackle and open the lock.
2. **Prepare for Recoding:** With the padlock open, locate the recoding tool (often a small pin or lever, sometimes integrated into the padlock or requiring a small pointed object like a pen tip). Insert the tool into the reset hole, usually found on the side or bottom of the padlock body, and turn it as indicated (e.g., 90 degrees clockwise) to engage the reset mechanism.
3. **Set Your New Combination:** While the reset mechanism is engaged, rotate the dials to your desired 4-digit

combination. Choose a memorable but secure code.

4. **Lock the New Combination:** Once your new combination is set on the dials, disengage the reset mechanism by turning the recoding tool back to its original position (e.g., 90 degrees counter-clockwise) and remove it.
5. **Test the Combination:** Close the shackle. Scramble the dials. Then, enter your new combination and press the release button to ensure the padlock opens correctly. If it does not open, repeat the steps from the beginning.

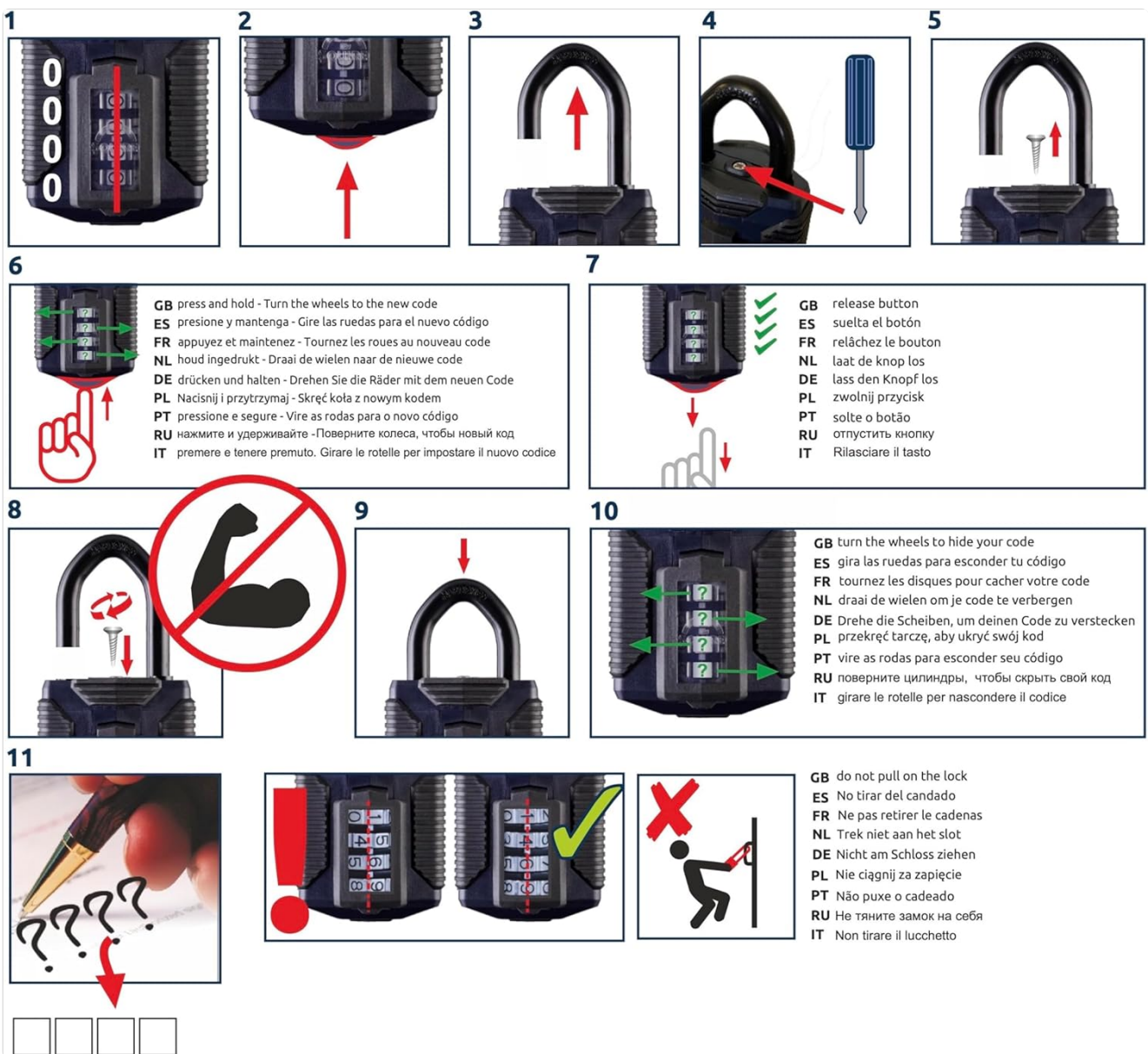


Figure 3: Visual guide for setting the combination. Ensure the padlock is open before attempting to change the code.

## OPERATING THE PADLOCK

To open the padlock:

1. Rotate the dials to your set 4-digit combination.
2. Press the release button located at the bottom of the padlock. The shackle will spring open.

To close and secure the padlock:

1. Push the shackle firmly back into the padlock body until it clicks into place.
2. Scramble the dials to a random combination to lock the padlock.



Figure 4: The padlock with its shackle in the open position, ready for use or combination setting.

## MAINTENANCE

While the Squire CP50 padlock is designed to be highly durable and weatherproof, regular maintenance will ensure its longevity and smooth operation, especially in harsh environments.

- **Cleaning:** Periodically wipe down the padlock body and shackle with a damp cloth to remove dirt, dust, and grime. Avoid abrasive cleaners.
- **Lubrication:** For optimal performance, especially in cold or wet conditions, apply a small amount of silicone-based lubricant or WD-40 to the shackle mechanism and the combination dials every few months. This helps prevent freezing and ensures smooth rotation of the dials.
- **Inspection:** Regularly inspect the padlock for any signs of wear, damage, or corrosion. Ensure the dials turn freely and the shackle opens and closes without obstruction.
- **Weather Protection:** Although weatherproof, prolonged exposure to extreme conditions (e.g., direct rain, snow, or saltwater spray) can still affect performance over time. Consider using a protective cover or positioning the padlock in a sheltered area if possible for continuous outdoor use.

## TROUBLESHOOTING

Problem	Possible Cause	Solution
Padlock will not open with the correct combination.	Dials not perfectly aligned; combination changed accidentally; internal mechanism stuck.	Ensure each number is precisely centered in the window. Try slightly adjusting each dial. If recently changed, try previous combinations. Apply lubricant to dials and mechanism.
Dials are stiff or difficult to turn.	Dirt/debris accumulation; lack of lubrication; freezing in cold weather.	Clean the dials thoroughly. Apply a silicone-based lubricant or WD-40. If frozen, gently warm the padlock (e.g., with warm air, not direct heat) to thaw any ice before attempting to turn dials.
Shackle does not spring open or close smoothly.	Internal mechanism obstruction; corrosion; shackle bent.	Apply lubricant to the shackle entry points and the release button. Check for any visible obstructions. If the shackle is bent, the padlock may need replacement.
Padlock appears to be less weather resistant over time.	Protective cover wear; prolonged extreme exposure; lack of maintenance.	Ensure the protective cover over the dials is intact and properly seated. Increase frequency of lubrication, especially in harsh environments. Consider additional shelter for the padlock.

## SPECIFICATIONS

<b>Model Number</b>	SQ-CP50/ATLO/2.5BLUE
<b>Manufacturer</b>	Henry Squire & Sons Ltd.
<b>Lock Type</b>	4-Wheel Combination Padlock
<b>Body Material</b>	Zinc Die-Cast with Dual-Compound Cover
<b>Shackle Material</b>	Stainless Steel
<b>Color</b>	Blue
<b>Dimensions (L x W x H)</b>	50 x 36 x 130 mm (1.97 x 1.42 x 5.12 inches)
<b>Weight</b>	Approx. 249 g (0.55 lbs)
<b>Special Features</b>	Portable, Weatherproof, Keyless, Corrosion Resistant



Figure 5: Detailed dimensions of the Squire CP50 padlock, including overall height, body width, and shackle clearance.

## WARRANTY AND SUPPORT

Squire stands behind the quality of its products. The Squire CP50 Heavy-Duty 4-Wheel Combination Padlock comes with a **10-year manufacturer's guarantee**, ensuring peace of mind regarding its durability and performance.

For further assistance, technical support, or warranty claims, please visit the official Squire website or contact their customer service department. Keep your purchase receipt as proof of purchase for warranty purposes.

**Official Website:** [www.squirelocks.co.uk](http://www.squirelocks.co.uk) (Example link, actual link might vary)