

Newday ND-60-1015WT-DE

Newday 153CM Ceiling Fan with Light and Remote Control

Model: ND-60-1015WT-DE - Instruction Manual

1. INTRODUCTION

Thank you for choosing the Newday 153CM Ceiling Fan with Light. This manual provides detailed instructions for the safe installation, operation, and maintenance of your new ceiling fan. Please read this manual thoroughly before installation and keep it for future reference. This fan features a quiet DC motor, reversible function for year-round use, a dimmable LED light with adjustable color temperature, and convenient remote control operation.

2. SAFETY INSTRUCTIONS

To reduce the risk of electric shock, fire, or personal injury, always follow these basic safety precautions:

- Ensure the power is turned off at the circuit breaker before installation or maintenance.
- All electrical connections must be made in accordance with local codes and regulations.
- The mounting structure must be capable of supporting the weight of the fan (approximately 10 kg).
- Do not connect the fan to a dimmer switch not specifically designed for ceiling fans. Use only the provided remote control for dimming.
- Ensure fan blades are at least 2.3 meters (7.5 feet) from the floor and have at least 0.5 meters (1.6 feet) clearance from walls or other obstructions.
- Do not insert objects into the path of the fan blades.
- Clean the fan only with a soft, damp cloth. Do not use abrasive cleaners.

3. PACKAGE CONTENTS

Carefully unpack your ceiling fan and ensure all items are present. If any parts are missing or damaged, contact customer service.

- Newday 153CM Ceiling Fan Unit (Motor, Blades, Light Kit)
- Remote Control with Wall Holder

- Mounting Bracket and Hardware
- Instruction Manual



Image: Newday ceiling fan components including remote control, circular light unit, and LED board.

4. TECHNICAL SPECIFICATIONS

Diameter	153 cm (60 inches)
Height	36 cm (14.2 inches)
Weight	8.8 kg (19.4 lbs)
Recommended Room Size	15-25 m ²
Max. Ceiling Slope	15°
Max. Air Volume	8000 CFM
Fan Speeds	6 speeds (92, 109, 121, 137, 152, 163 RPM)
Motor	35W DC Reversible Motor
LED Light Power	24W
Brightness	20%-100% Stepless Dimmable (460LM-2300LM)
Color Temperature	3000K-6500K Stepless Adjustable
Material	ABS Plastic Blades, Metal Housing, Acrylic Shade
Voltage	220 Volt
Control Type	Remote Control
Energy Efficiency	Up to 80% less energy consumption than AC motors

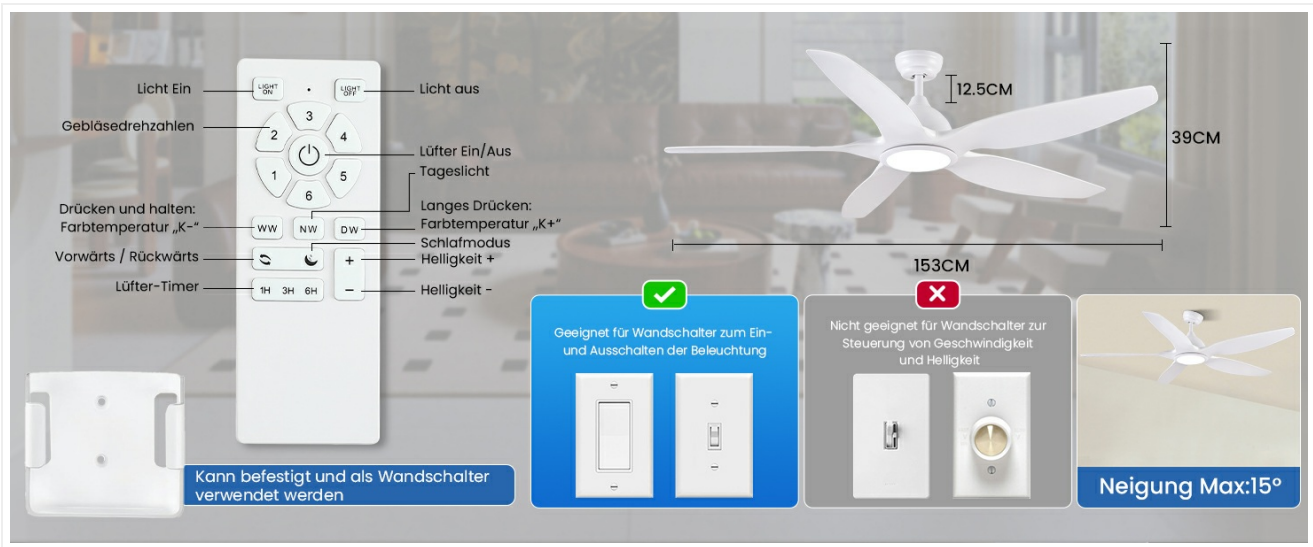


Image: Technical diagram illustrating fan dimensions and recommended room size.



Image: Illustration demonstrating the fan's powerful airflow and coverage area.



Image: Comparison of fan blade materials, highlighting the durability of ABS plastic.

5. INSTALLATION

Installation should be performed by a qualified electrician or a person with sufficient electrical knowledge. Always ensure power is disconnected before beginning installation.

Pre-installation Checks:

- Verify that the ceiling junction box is securely mounted and can support the fan's weight.
- Ensure you have all necessary tools (screwdriver, wire strippers, ladder, etc.).

Mounting the Fan:

1. Turn off power at the main circuit breaker.
2. Attach the mounting bracket to the ceiling junction box using the provided screws. Ensure it is firmly secured.
3. Connect the electrical wires (live, neutral, ground) from the ceiling to the fan's wiring according to the color codes. Refer to the wiring diagram in the full manual.
4. Carefully lift the fan assembly and attach it to the mounting bracket. Ensure all connections are secure and wires are tucked away.
5. Install the fan blades onto the motor housing.
6. Attach the LED light kit and light cover.
7. Restore power and test the fan and light functions.

For a visual guide, please refer to the official installation video: [Newday Ceiling Fan Installation Video](#)

Description: This video provides step-by-step instructions for installing the Newday ceiling fan. Please note that this link directs to an external video page.

6. OPERATION

Remote Control Functions:

The fan is operated using the included remote control. Ensure batteries are correctly inserted.



Image: Remote control layout and its various functions.

- **Light On/Off:** Turns the LED light on or off.
- **Fan On/Off:** Turns the fan on or off.
- **Speed 1-6:** Selects one of six fan speeds.
- **WW (Warm White):** Sets light to warm white. Long press to steplessly decrease color temperature.
- **NW (Natural White):** Sets light to natural white.
- **DW (Cool White):** Sets light to cool white. Long press to steplessly increase color temperature.
- **+/-:** Adjusts light brightness steplessly from 20% to 100%.
- **1H/3H/6H:** Sets the fan timer for 1, 3, or 6 hours.
- **Forward/Reverse:** Changes fan direction for summer or winter mode.

Light Adjustment:

The integrated LED light offers stepless adjustment for both brightness and color temperature.

- **Brightness:** Use the "+" and "-" buttons on the remote to adjust brightness from 20% (460LM) to 100% (2300LM).

- **Color Temperature:** Long press the "WW" button to decrease color temperature towards 3000K (warm white) or long press "DW" to increase it towards 6500K (cool white). The "NW" button sets a natural white light.
- **Memory Function:** The fan remembers your last light brightness and color temperature settings when turned off and on again.



Image: Stepless adjustment for brightness and color temperature.

Fan Speed Settings:

The fan offers 6 distinct speed settings to suit your comfort needs.

- **Speed 1-2 (Slow):** 92-109 RPM (6.5-10.6W) - Ideal for sleeping or gentle air circulation.
- **Speed 3-4 (Medium):** 121-137 RPM (14.6-20.5W) - Suitable for relaxing or daily activities.
- **Speed 5-6 (Fast):** 152-163 RPM (27.3-35.2W) - Provides strong airflow for quick cooling or intense activities.



Image: Fan speed settings and their recommended uses.

Sleep Mode:

Activate sleep mode for a comfortable night's rest. In this mode, the fan cycles through speeds 1, 2, and 3 every 20 seconds to simulate natural wind, providing a quiet and gentle breeze.



Image: Quiet operation and sleep mode for undisturbed rest.

Summer and Winter Modes:

The reversible DC motor allows for year-round use:

- **Summer Mode (Counter-clockwise):** Airflow is directed downwards, creating a cooling breeze.
- **Winter Mode (Clockwise):** Airflow is directed upwards, circulating warm air trapped near the ceiling to help balance room temperature.

To switch modes, press the "Forward/Reverse" button on the remote control while the fan is running. The fan will slowly stop and then restart in the opposite direction.



Image: Summer and Winter modes for year-round comfort.

Timer Function:

Use the 1H, 3H, or 6H buttons to set the fan to automatically turn off after the selected duration. Note that operating the remote control after setting the timer will automatically cancel the timer function.

7. MAINTENANCE

Regular maintenance ensures optimal performance and longevity of your fan.

- **Cleaning:** Dust the fan blades and motor housing periodically with a soft, lint-free cloth. For deeper cleaning, use a slightly damp cloth. Ensure the fan is completely dry before operating.

- **Light Cover:** Wipe the acrylic light cover with a soft, damp cloth. Do not use harsh chemicals.
- **Tightness Check:** Periodically check all screws and connections on the fan and mounting bracket to ensure they are secure.

Always turn off the power at the circuit breaker before performing any cleaning or maintenance.

8. TROUBLESHOOTING

If you encounter issues with your fan, refer to the following common problems and solutions:

Problem	Possible Cause	Solution
Fan does not start	No power supply; Remote control batteries are dead; Loose wiring connection.	Check circuit breaker; Replace remote control batteries; Check wiring connections (ensure power is off).
Light does not work	No power supply; Loose wiring connection; LED panel issue.	Check circuit breaker; Check wiring connections (ensure power is off); Contact customer support if LED panel is faulty.
Fan wobbles	Loose mounting screws; Unbalanced blades.	Tighten all mounting screws; Ensure blades are securely attached and balanced (balancing kit not included, but check for evenness).
Remote control not responding	Dead batteries; Signal interference; Remote not paired.	Replace batteries; Ensure no obstructions between remote and receiver; Refer to pairing instructions in the full manual if applicable.

If the problem persists after trying these solutions, please contact Newday customer support.

9. WARRANTY AND SUPPORT

Newday is committed to providing high-quality products and excellent customer service.

- **Warranty:** This product comes with a 2-year warranty from the date of purchase.
- **Customer Service:** We offer 24-hour customer service. If you require assistance with your ceiling fan, our team is ready to provide the best solution.

For support, please refer to the contact information provided with your purchase or visit the official Newday store on Amazon.