



Manuals.plus /

- › PURPLE LEAF /
- › PURPLE LEAF 12' X 14' Hardtop Gazebo Instruction Manual

PURPLE LEAF 12' X 14' Hardtop Gazebo

PURPLE LEAF 12' X 14' Hardtop Gazebo Instruction Manual

Model: 12' X 14' Hardtop Gazebo | Brand: PURPLE LEAF

1. IMPORTANT SAFETY INFORMATION

This gazebo requires careful assembly and installation. It is recommended to have multiple people for assembly and to use appropriate tools. Always adhere to local building codes and consult applicable Homeowners Association (HOA) guidelines before installation. Exercise caution during assembly and disassembly to prevent injuries. Ensure the gazebo is secured to a stable foundation for optimal stability and safety.

2. PRODUCT OVERVIEW

The PURPLE LEAF 12' X 14' Hardtop Gazebo is designed to provide a durable and comfortable outdoor living space. It features a galvanized steel double-tiered roof for UV protection and airflow, a powder-coated aluminum frame for resistance against scratching and peeling, and a dual-track system for privacy curtains and netting.



Image: The PURPLE LEAF 12' X 14' Hardtop Gazebo providing shade and shelter in an outdoor environment.

Key Features:

- **Galvanized Steel Double-Tiered Roof:** Provides protection from UV rays and allows for optimal airflow.
- **Heavy-Duty Aluminum Frame:** Powder-coated for resistance to scratching and peeling, with reinforced corners for stability.
- **Removable Privacy Curtains and Netting:** Offers protection from sun, rain, and insects, with a dual-track system for independent control.
- **Water Gutter Design:** Ensures efficient rainwater drainage from the roof edges.
- **Integrated Hooks:** "U" shaped hooks on the frame top for hanging decorative items like lights or flower baskets.



Galvanized Steel Double Roof

- Reflects UV
- Water-Resistant
- Keep Ventilated
- Bearing Weight

Image: Illustration of the galvanized steel double roof, highlighting its UV reflection, water resistance, ventilation, and bearing weight capabilities.



Upgrade Yarn-dyed Curtains

- Fade-resistant for up to two years of use.
- Woven from multiple layers of yarn.
- Heavier than the standard.
- Resistant to being moved by a typical breeze.



Image: The dual-track system allows for independent control of the privacy curtains and netting, offering flexibility for open, netted, or fully enclosed configurations.

3. SPECIFICATIONS

Attribute	Detail
Brand	PURPLE LEAF
Model	12' X 14' Hardtop Gazebo
Product Dimensions	166.5"L x 142.9"W x 120.9"H
Floor Area	168 Square Feet
Item Weight	335 Pounds
Frame Material	Alloy Steel, Aluminum, Metal
Roof Material	Galvanized Steel
Curtain/Netting Material	Yarn dyed polyester curtains, Textilene nettings
Water Resistance Level	Water Resistant
Ultraviolet Light Protection	100%
Assembly Required	Yes
Color	Khaki



Image: Technical drawing illustrating the overall dimensions and key measurements of the gazebo.



Image: Visual comparison highlighting the increased width and volume of the PURPLE LEAF gazebo's aluminum columns for enhanced durability.

4. SETUP & ASSEMBLY

Assembly of the PURPLE LEAF Hardtop Gazebo requires careful attention to detail and adherence to the provided instructions. It is strongly recommended to have at least two adults for the assembly process. Ensure all parts are accounted for before beginning. Organize components by type and size to streamline the process.

General Assembly Tips:

- **Read the Manual:** Thoroughly review the entire instruction manual before starting assembly.
- **Clear Workspace:** Ensure a spacious and level area for assembly, free from obstructions.
- **Part Identification:** Lay out and identify all parts according to the parts list.
- **Tool Requirements:** Gather all necessary tools as specified in the assembly guide.
- **Secure Fasteners:** Ensure all screws and bolts are tightened securely, but avoid over-tightening until instructed.
- **Foundation:** The gazebo must be anchored to a stable and level surface. Consult local building codes for proper anchoring methods.

Galvanized Steel Double Roof



Reflects UV



Water-Resistant



Keep Ventilated



Bearing weight



Image: The rust-resistant screws used in PURPLE LEAF gazebos are designed for extended durability and reduced maintenance, contrasting with ordinary iron screws that are prone to rust.

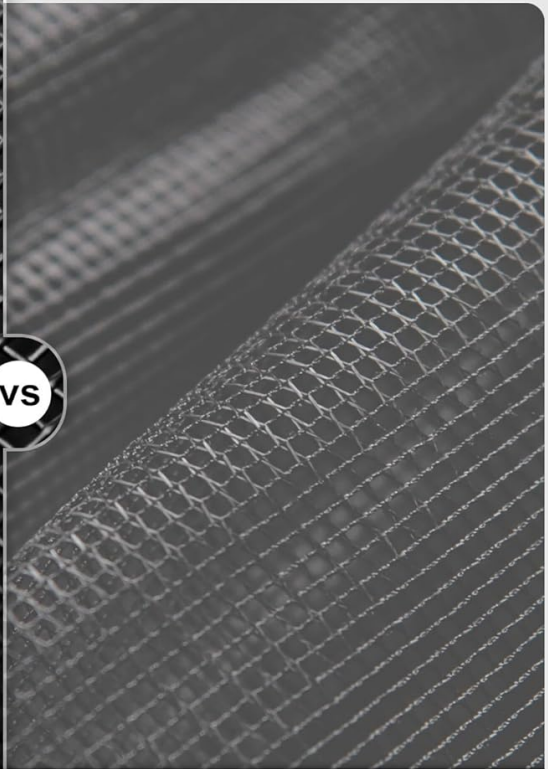
5. OPERATING INSTRUCTIONS

Curtains and Netting:

The gazebo is equipped with a dual-track system, allowing independent operation of the privacy curtains and mosquito netting. Simply slide each layer along its respective track to open or close them as desired. This provides flexibility for privacy, shade, or insect protection.



VS



PURPLE LEAF

High tensile strength

260 GSM (Five times the market average)

After **2 years**, the netting remains intact

Heavy-Duty: Stay steady in 10 mph winds

OTHERS

Sway noticeably

40 GSM (Flimsy)

It will be damaged in less than a year

Low-Elasticity

Image: The upgraded yarn-dyed curtains are water-repellent, fade-resistant, and flame-resistant, designed for durability and colorfastness.

Wide Diameter columns

20% increase in width

32% increase in volume

Ensuring exceptional durability and sturdiness.



Image: The robust 260 GSM netting offers high tensile strength and remains intact for over two years, providing effective insect protection.

Integrated Hooks:

The gazebo frame includes "U" shaped hooks. These can be used to hang lightweight decorative items such as flower baskets, wind chimes, or outdoor string lights to enhance the ambiance of your outdoor space.



Image: The integrated hooks provide convenient points for hanging decorative elements or lighting fixtures.

6. MAINTENANCE

Regular maintenance will help preserve the appearance and longevity of your gazebo.

Cleaning:

- **Frame:** Clean the aluminum frame with a mild soap and water solution. Rinse thoroughly and dry with a soft cloth. Avoid abrasive cleaners or harsh chemicals.
- **Roof:** Periodically inspect the galvanized steel roof for debris accumulation. Clean with water and a soft brush if necessary. The tilted roof design helps prevent debris buildup.
- **Curtains & Netting:** The yarn-dyed polyester curtains and textilene nettings are designed for easy care. They can be removed and cleaned according to fabric care instructions, typically with mild soap and water. Ensure they are completely dry before re-installing or storing to prevent mildew.

Seasonal Care:

- **Winter:** In areas with heavy snow or strong winds, it is advisable to remove the curtains and netting and clear snow from the roof to prevent structural damage.
- **Fasteners:** Periodically check all bolts and screws to ensure they remain tight.

PURPLE LEAF

After 1 year

Rust-resistant design for extended durability, retaining a fresh look with reduced maintenance costs.



Optimized Assembly

Streamline the assembly process to reduce installation time by 20%.



Ordinary Iron Screws

After 1 year

Prone to rust, which reduces the product's lifespan and appearance.

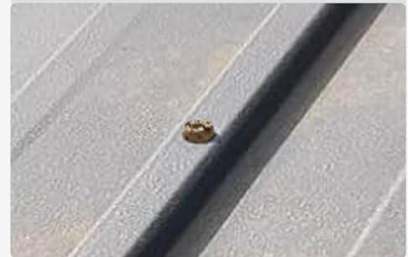


Image: The integrated water gutter system efficiently directs rainwater away from the gazebo, minimizing maintenance and protecting the structure.

7. TROUBLESHOOTING

Common Issues and Solutions:

- **Wobbly Structure:** Ensure all bolts and screws are securely tightened. Verify that the gazebo is installed on a level surface and properly anchored.
- **Water Leakage:** Check the roof panels for proper alignment and ensure all seals are intact. Verify that the water gutter system is clear of debris.
- **Curtains/Netting Sticking:** Inspect the tracks for any obstructions or damage. Clean the tracks and ensure the fabric is free from snags.
- **Missing Parts:** If any parts are missing upon delivery, contact PURPLE LEAF customer support with your purchase details.

For issues not covered here, please refer to the contact information in the Support section.

8. WARRANTY & SUPPORT

Warranty Information:

- **Hardtop Roof:** 5 years
- **Frame Construction:** 1 year
- **Curtains & Netting:** 2 years

This warranty covers manufacturing defects under normal use. Please retain your proof of purchase for warranty claims.

Customer Support:

For assistance with assembly, parts, or any other inquiries, please contact PURPLE LEAF customer support. Refer to your purchase documentation or the official PURPLE LEAF website for the most current contact information.