

SHARP YC-MG01E-W

Sharp YC-MG01E-W Microwave Oven with Grill User Manual

Model: YC-MG01E-W

1. INTRODUCTION

This manual provides essential instructions for the safe and efficient operation, maintenance, and troubleshooting of your Sharp YC-MG01E-W Microwave Oven with Grill. Please read it thoroughly before using the appliance and retain it for future reference.



Figure 1: Front view of the Sharp YC-MG01E-W Microwave Oven with Grill.

2. IMPORTANT SAFETY INSTRUCTIONS

To reduce the risk of fire, electric shock, injury to persons, or exposure to excessive microwave energy when

using your appliance, follow basic safety precautions, including the following:

- Read all instructions before using the appliance.
- Do not attempt to operate this oven with the door open as this can result in harmful exposure to microwave energy.
- Do not place any object between the oven front face and the door or allow soil or cleaner residue to accumulate on sealing surfaces.
- Do not operate the oven if it is damaged. It is particularly important that the oven door closes properly and that there is no damage to the door, hinges, or seals.
- Only qualified service personnel should adjust or repair the oven.
- Ensure the appliance is properly grounded.
- Do not heat liquids or other foods in sealed containers as they are liable to explode.
- Never operate the oven when empty.

3. PRODUCT COMPONENTS

Familiarize yourself with the main parts of your microwave oven:

- **Control Panel:** Used to set cooking functions, power levels, and time.
- **Door:** Equipped with a safety interlock system.
- **Oven Cavity:** The interior space where food is cooked.
- **Turntable:** Rotates food for even cooking.
- **Turntable Support:** Holds the turntable in place.
- **Grill Rack:** Used for grill cooking.



Figure 2: Interior view of the microwave oven, showing the turntable and grill rack.

4. SETUP AND INSTALLATION

4.1 Unpacking

1. Remove all packaging materials from inside the oven cavity and from the oven door.
2. Inspect the oven for any damage, such as dents or a misaligned door. Do not operate the oven if it is damaged.

4.2 Placement

- Place the oven on a flat, stable surface that can support its weight and the heaviest food item likely to be cooked in the oven.
- Ensure adequate ventilation. Leave a minimum of 20 cm (8 inches) of space above the oven, 10 cm (4 inches) at the rear, and 5 cm (2 inches) on each side for proper airflow.
- Keep the oven away from heat sources and strong magnetic fields.

4.3 Electrical Connection

- Plug the power cord into a standard 230V, 50Hz, AC outlet with proper grounding.
- Do not use extension cords or adapters.

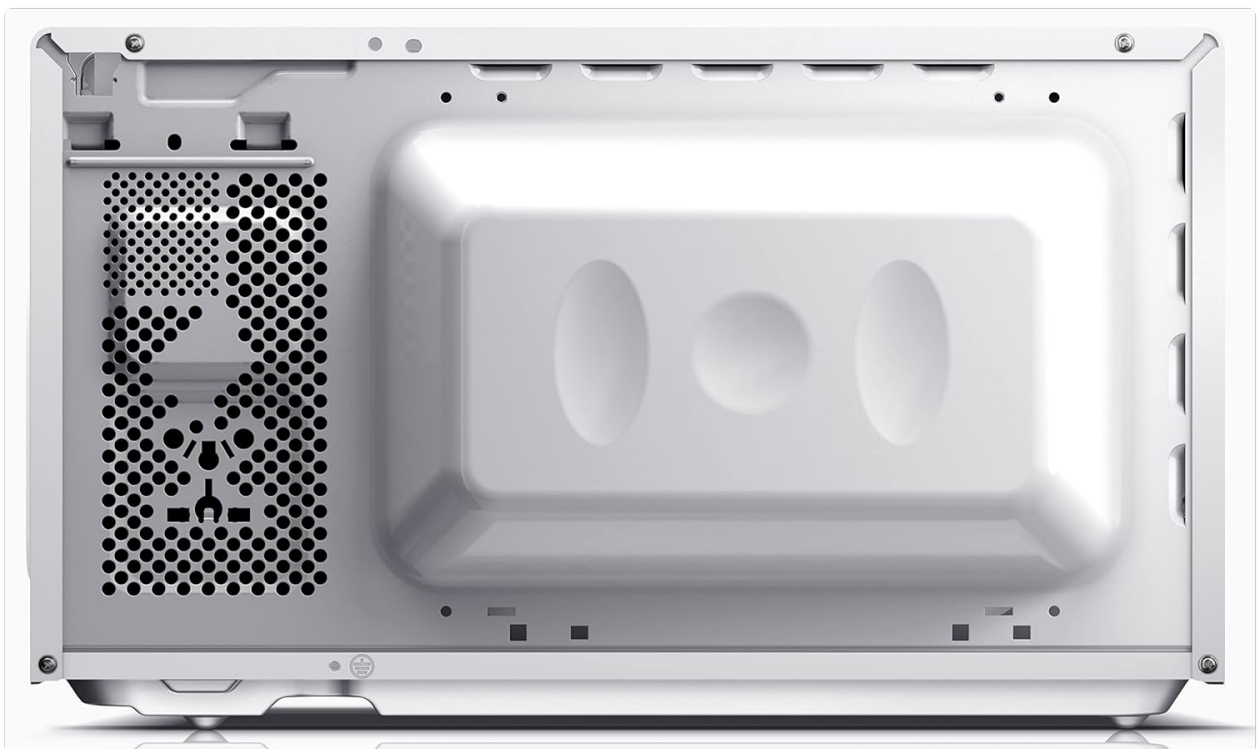


Figure 3: Rear view of the microwave oven, highlighting ventilation and power connection area.

5. OPERATING INSTRUCTIONS

5.1 Control Panel Overview

The Sharp YC-MG01E-W features two mechanical rotary dials for easy control:

- **Power Dial:** Selects the cooking mode and power level.
- **Timer/Defrost Dial:** Sets the cooking time or defrost weight.



Figure 4: Close-up of the control panel with Power and Timer/Defrost dials.

5.2 Microwave Cooking

1. Place food in a microwave-safe container on the turntable.
2. Close the oven door securely.
3. Turn the **Power Dial** to select the desired microwave power level:
 - **Low:** For softening butter, thawing.
 - **Mid-Low:** For simmering, delicate foods.
 - **Mid:** For reheating, general cooking.
 - **Mid-High:** For faster cooking of most foods.
 - **High (800W):** For rapid cooking and boiling.
4. Turn the **Timer/Defrost Dial** to set the desired cooking time (up to 35 minutes).
5. The oven will start automatically. When the time expires, the oven will chime and turn off.

5.3 Grill Cooking

Use the grill function for browning and crisping food. Place food on the grill rack provided.

1. Place food on the grill rack inside the oven.
2. Close the oven door.
3. Turn the **Power Dial** to 'Grill'.
4. Turn the **Timer/Defrost Dial** to set the desired grilling time.
5. Monitor food closely to prevent burning.

5.4 Combined Cooking

This oven offers three combination modes for versatile cooking:

1. **Combi.1:** Combines microwave and grill for efficient cooking and browning.

2. **Combi.2:** Another combination setting, typically with a different ratio of microwave to grill power.
3. **Combi.3:** A third combination setting, offering further flexibility.

To use a combination mode:

1. Place food in a suitable container on the turntable or grill rack as appropriate.
2. Turn the **Power Dial** to 'Combi.1', 'Combi.2', or 'Combi.3'.
3. Turn the **Timer/Defrost Dial** to set the desired cooking time.

5.5 Defrost Function

The defrost function allows you to thaw frozen food by weight.

1. Place frozen food in the oven.
2. Turn the **Timer/Defrost Dial** to the desired weight setting (e.g., 0.2 kg, 0.4 kg, 0.6 kg, 0.8 kg, 1.0 kg). The oven will automatically calculate the defrost time.
3. The oven will start defrosting. Turn food over halfway through the defrosting process for even thawing.

6. MAINTENANCE AND CLEANING

Regular cleaning helps maintain the performance and longevity of your microwave oven.

6.1 Exterior Cleaning

- Wipe the exterior surface with a soft, damp cloth. Do not use abrasive cleaners or solvents.
- Clean the control panel with a slightly damp cloth.

6.2 Interior Cleaning

- After each use, wipe the interior cavity with a damp cloth to remove food splatters.
- For stubborn stains, place a bowl of water with lemon juice inside and microwave for a few minutes. The steam will loosen the grime.
- Remove and wash the turntable and turntable support in warm, soapy water. They are also dishwasher safe.

6.3 Grill Cleaning

- Ensure the grill element is cool before cleaning.
- Wipe the grill element with a damp cloth. Do not use harsh chemicals.
- Clean the grill rack in warm, soapy water.

7. TROUBLESHOOTING

If you encounter issues with your microwave oven, refer to the table below for common problems and solutions.

Problem	Possible Cause	Solution
Oven does not start	Power cord not plugged in; Door not closed properly; Fuse blown or circuit breaker tripped.	Ensure plug is secure; Close door firmly; Check household fuse/circuit breaker.

Problem	Possible Cause	Solution
Oven not heating food	Door not closed properly; Incorrect power level or time set.	Close door firmly; Verify power level and cooking time settings.
Turntable not rotating	Turntable or support not correctly placed; Obstruction under turntable.	Ensure turntable and support are correctly positioned; Remove any obstructions.
Sparks inside oven	Metal or foil used in oven; Food splatters.	Remove any metal objects; Clean oven interior thoroughly.

8. SPECIFICATIONS

Technical details for the Sharp YC-MG01E-W Microwave Oven with Grill:

Feature	Value
Brand	SHARP
Model	YC-MG01EW
Capacity	20 litres
Microwave Power	800 Watts
Grill Power	1000 Watts
Installation Type	Countertop
Special Feature	Timer
Oven Cooking Mode	Electric, Radiant
Voltage	230 Volts
Material	Stainless Steel
Product Dimensions (LxWxH)	34.4 x 44 x 25.8 Centimeters
Item Weight	11 kg 600 g
Included Components	Microwave, user manual, power cable, grill rack



Figure 5: Product dimensions of the Sharp YC-MG01E-W Microwave Oven.

9. WARRANTY AND SUPPORT


9.1 Warranty Information

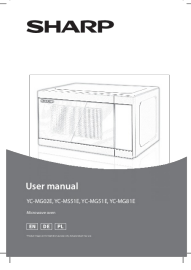
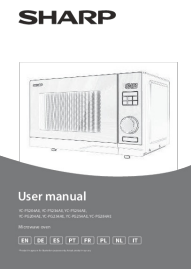

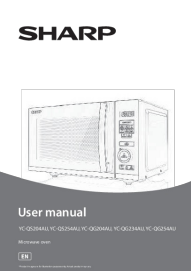
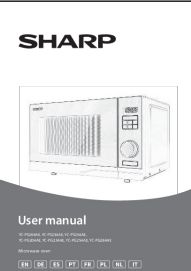
Your Sharp YC-MG01E-W Microwave Oven is covered by a manufacturer's warranty. Please refer to the warranty card included with your product for specific terms, conditions, and duration. Keep your purchase receipt as proof of purchase.

9.2 Customer Support

For technical assistance, service, or spare parts, please contact Sharp customer service. Contact details can typically be found on the Sharp official website or in the warranty documentation.

Related Documents - YC-MG01E-W

	<p>Sharp YC-MS01E-B 20 Litre Microwave Oven - Manual Control</p> <p>Detailed specifications and features for the Sharp YC-MS01E-B 20 Litre Microwave Oven with manual control, including capacity, power, dimensions, and logistic information.</p>
---	---

	<p>SHARP Microwave Oven User Manual: YC-MG02E, YC-MS51E, YC-MG51E, YC-MG81E</p> <p>User manual for SHARP YC-MG02E, YC-MS51E, YC-MG51E, YC-MG81E microwave ovens. Covers installation, safety, operation, features, and maintenance.</p>
	<p>SHARP Microwave Oven User Manual</p> <p>User manual for SHARP microwave ovens, providing essential safety instructions, installation guides, operational procedures, and troubleshooting tips for models YC-PS204AE, YC-PS234AE, YC-PS254AE, YC-PG204AE, YC-PG234AE, YC-PG254AE, and YC-PG284AE.</p>
	<p>SHARP YC-QS204A Series Microwave Oven User Manual</p> <p>Comprehensive user manual for the SHARP YC-QS204A series microwave ovens, covering safety instructions, operation, installation, cleaning, and troubleshooting. Includes model numbers YC-QS204A, YC-QS254A, YC-QG204A, YC-QG234A, YC-QG254A.</p>
	<p>Sharp Microwave Oven User Manual: YC-QS204AU, YC-QS254AU, YC-QG204AU, YC-QG234AU, YC-QG254AU</p> <p>Comprehensive user manual for Sharp microwave oven models YC-QS204AU, YC-QS254AU, YC-QG204AU, YC-QG234AU, and YC-QG254AU. Includes safety instructions, operating guides, cleaning tips, and troubleshooting.</p>
	<p>Sharp Microwave Oven User Manual: YC-PS204AE, YC-PG204AE Series</p> <p>Comprehensive user manual for Sharp microwave ovens, covering safety, installation, operation, cleaning, and troubleshooting for models YC-PS204AE, YC-PS234AE, YC-PS254AE, YC-PG204AE, YC-PG234AE, YC-PG254AE, YC-PG284AE.</p>