

T'nB EBZIPPBK

T'nB TWS Zip Earbuds User Manual

Model: EBZIPPBK

INTRODUCTION

Thank you for choosing the T'nB TWS Zip Earbuds. These true wireless stereo (TWS) earbuds are designed for an optimal audio experience, offering exceptional sound quality, comfort, and convenience. Featuring Bluetooth 5.1 technology and an integrated microphone, they are perfect for music listening, gaming, travel, and clear calls. This manual provides detailed instructions on how to set up, operate, maintain, and troubleshoot your earbuds.





Image: T'nB TWS Zip Earbuds and their charging case, showcasing the sleek black design with red accents.

SETUP

1. Charging the Earbuds and Case

Before first use, fully charge the earbuds and the charging case. Place the earbuds into the charging case. Connect the charging case to a USB power source using a compatible cable (not specified if included, assume standard USB-C or Micro-USB). The indicator lights on the case will show the charging status.

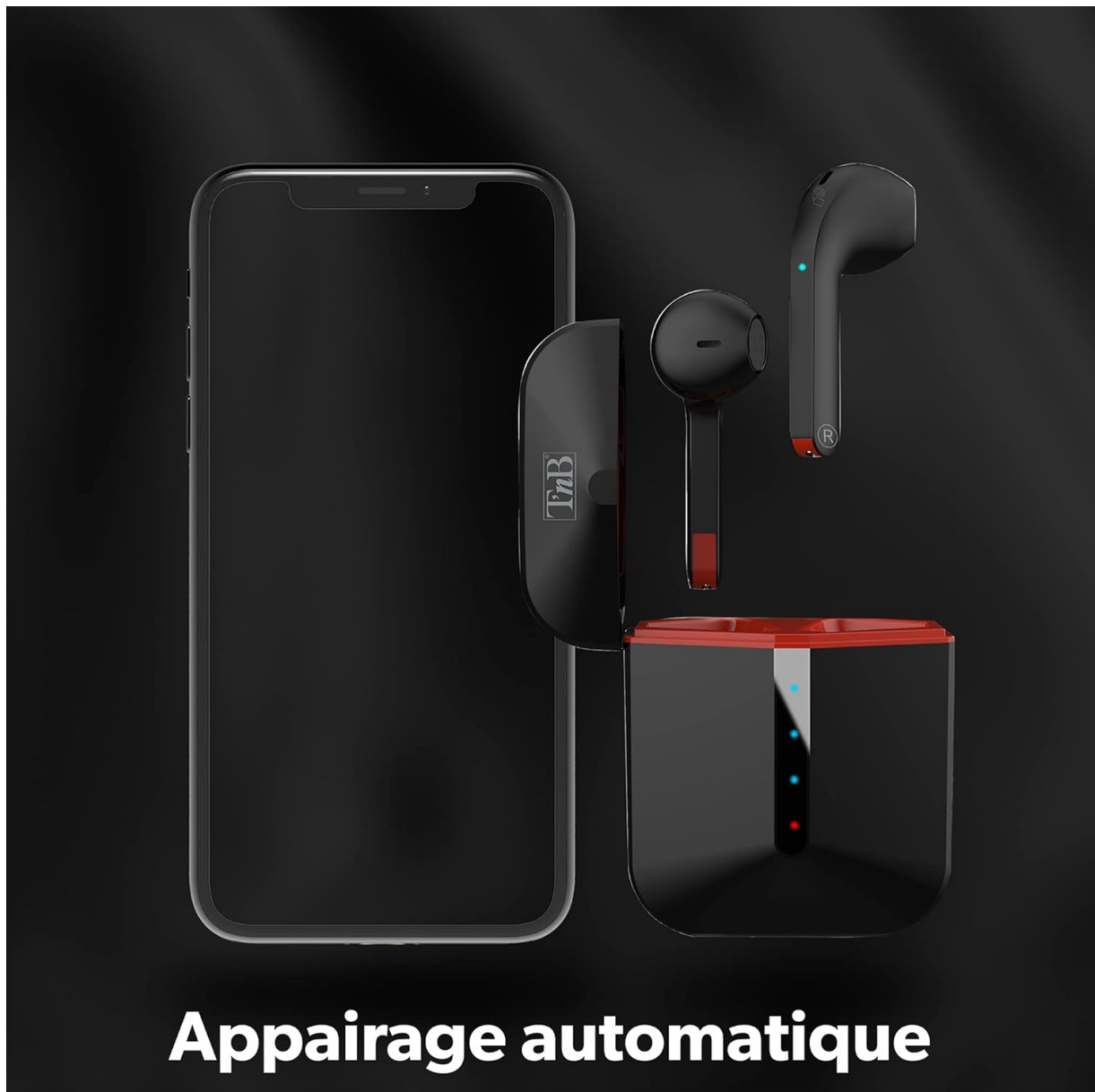


Image: The T'nB TWS Zip Earbuds securely placed inside their open charging case, ready for charging.

2. Pairing with Your Device

The TWS Zip Earbuds feature automatic pairing for convenience.

1. Ensure the earbuds are charged and inside the charging case.
2. Open the charging case. The earbuds will automatically power on and enter pairing mode.
3. On your smartphone or Bluetooth-enabled device, go to the Bluetooth settings.
4. Search for new devices and select "T'nB ZIP" (or similar name) from the list.
5. Once connected, you will hear a confirmation tone, and the earbuds will be ready for use.



Appairage automatique

Image: T'nB TWS Zip Earbuds and their charging case positioned next to a smartphone, symbolizing the automatic pairing process.

OPERATING INSTRUCTIONS

Touch Controls

The TWS Zip Earbuds are equipped with intuitive touch controls on each earbud for easy management of your audio and calls.

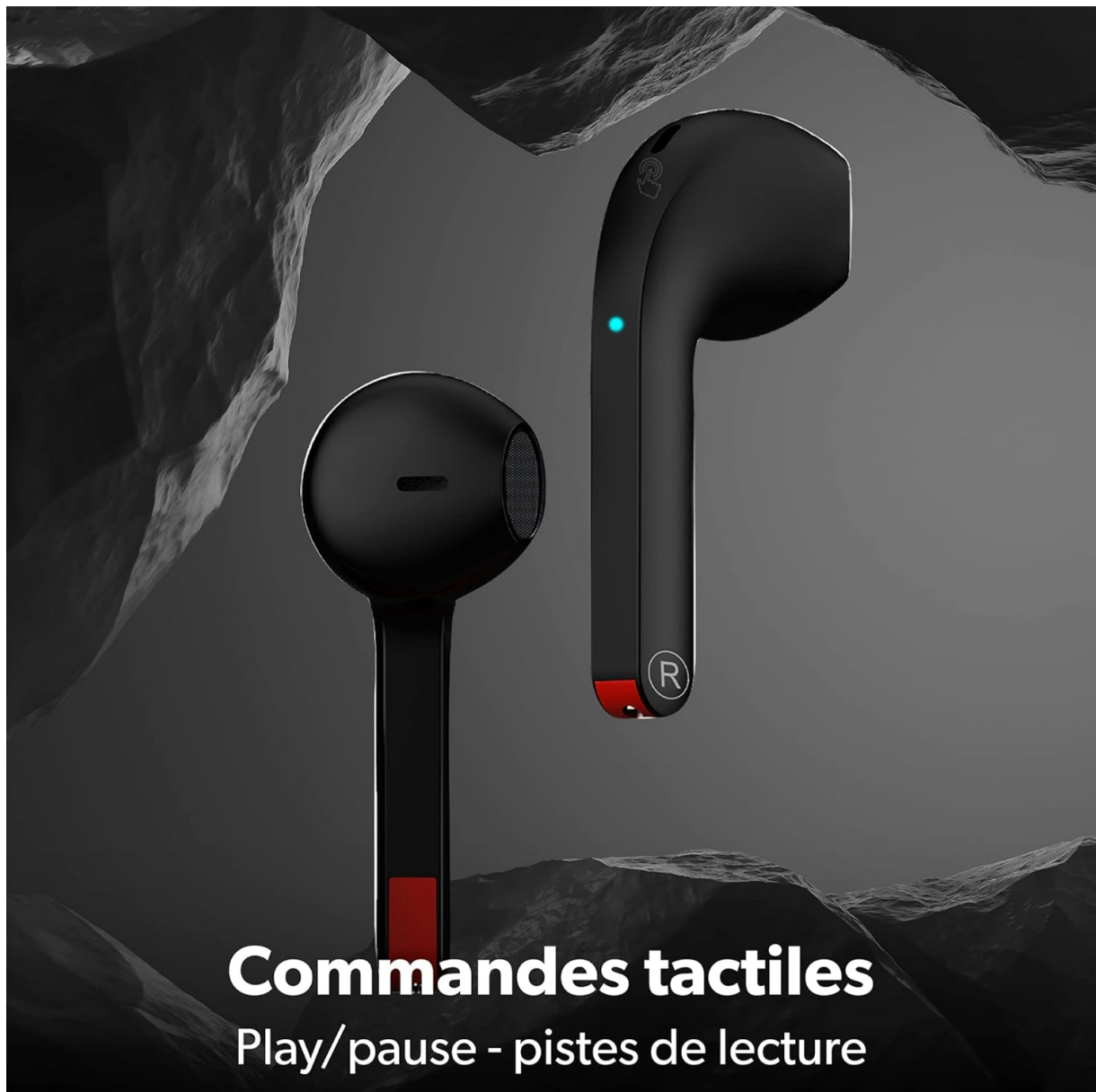


Image: A close-up view of the T'nB TWS Zip Earbuds, emphasizing the touch-sensitive areas for playback and track control.

- **Play/Pause:** Tap once on either earbud.
- **Next Track:** Double-tap the right earbud.
- **Previous Track:** Double-tap the left earbud.
- **Answer/End Call:** Tap once on either earbud during an incoming call.
- **Reject Call:** Press and hold on either earbud during an incoming call.
- **Activate Voice Assistant:** Triple-tap on either earbud (if supported by your device).

Making Calls

With the integrated microphone, you can make and receive calls with clarity.



Microphone intégré

Appels clairs

Image: A person smiling and looking at their phone while wearing the T'nB TWS Zip Earbuds, demonstrating clear call functionality.

- Ensure the earbuds are connected to your phone.
- Use the touch controls to answer or end calls as described above.

MAINTENANCE

Cleaning

- Wipe the earbuds and charging case with a soft, dry, lint-free cloth.
- Do not use abrasive cleaners, alcohol, or chemical solvents.
- Keep the charging contacts on the earbuds and inside the case clean and dry.

Storage

When not in use, store the earbuds in their charging case to protect them and keep them charged. Store the product in a cool, dry place away from direct sunlight and extreme temperatures.

TROUBLESHOOTING

- **Earbuds not pairing:** Ensure both earbuds are charged. Place them back in the case, close it, then open it again to re-enter pairing mode. Check your device's Bluetooth settings and try re-pairing.
- **No sound:** Check the volume level on your connected device. Ensure the earbuds are properly seated in your ears. Reconnect the Bluetooth connection.
- **Charging issues:** Ensure the charging cable and power source are working correctly. Clean the charging contacts on the earbuds and inside the case.
- **One earbud not working:** Try resetting the earbuds by placing them both in the case and then taking them out. Ensure both are charged.

SPECIFICATIONS

Feature	Detail
Model Name	TWS Zip Earbuds
Model Number	EBZIPPBK
Connectivity Technology	Wireless, Bluetooth 5.1
Earbud Type	In-Ear (Semi in-ear format)
Material	Plastic
Impedance	32 ohms
Sensitivity	105 dB
Frequency Response	20 - 20,000 Hz
Battery Life (Listening)	Up to 15 hours
Special Features	Lightweight, Integrated Microphone, Touch Controls, Automatic Pairing
Included Components	Wireless Charging Case

Écouteurs sans fil



Bluetooth®
5.1

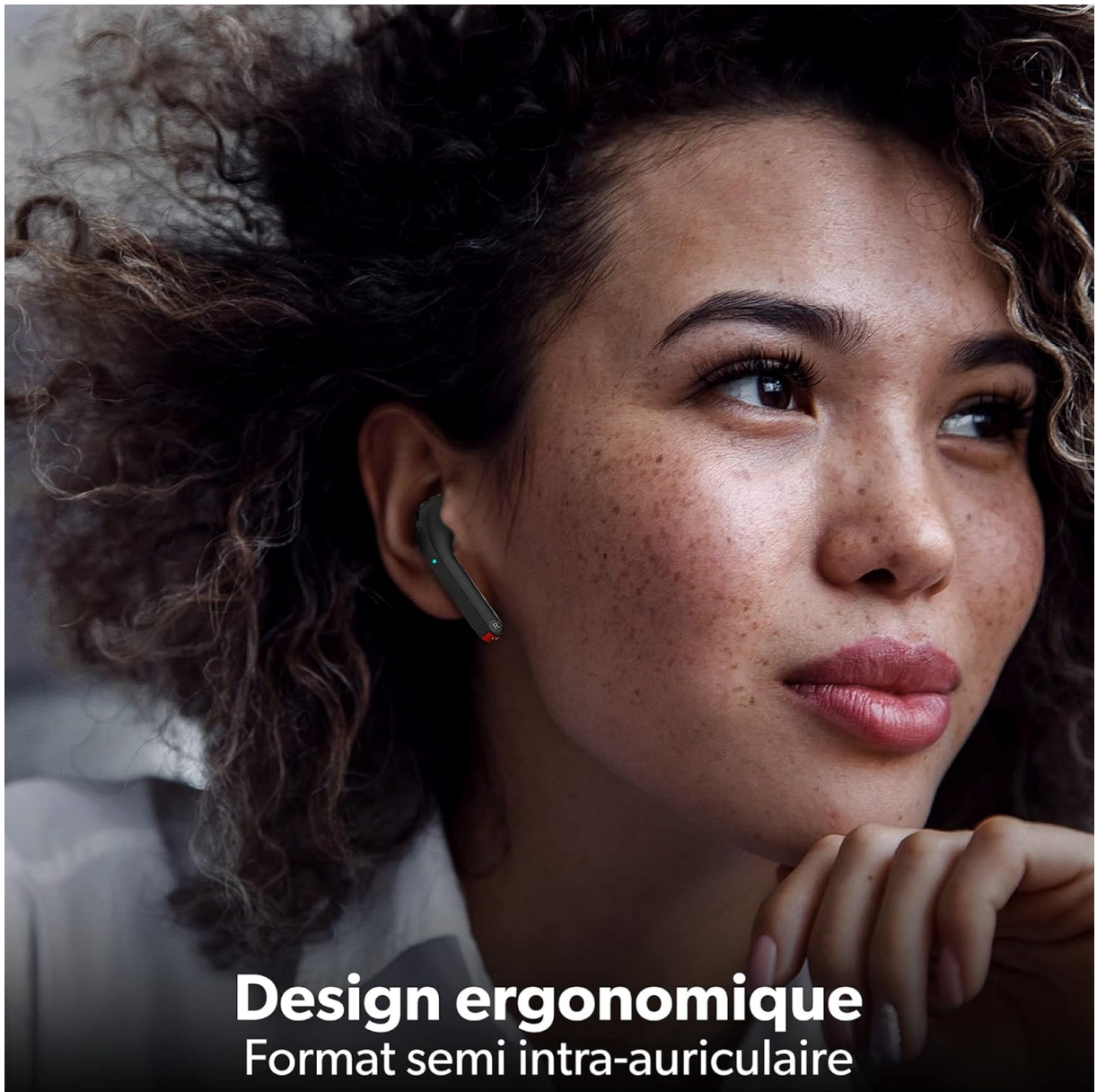


Image: T'nB TWS Zip Earbuds and their charging case, highlighting the Bluetooth 5.1 connectivity.



Autonomie 15 heures

Image: A person wearing the T'nB TWS Zip Earbuds, illustrating the product's long battery life of up to 15 hours.



Design ergonomique Format semi intra-auriculaire

Image: A close-up of the T'nB TWS Zip Earbud in an ear, emphasizing its ergonomic and semi in-ear design for comfort.

WARRANTY AND SUPPORT

Information regarding spare parts availability and guaranteed software updates for this product is currently unavailable.

For further assistance or inquiries, please refer to the contact information provided with your purchase or visit the official T'nB website.

© 2024 T'nB. All rights reserved.