

BLU ARIAPODS+

BLU Aria Pod+ Wireless Earbuds User Manual

Model: ARIAPODS+ | Brand: BLU

1. INTRODUCTION

Thank you for choosing the BLU Aria Pod+ Wireless Earbuds. These earbuds are designed to provide a high-quality audio experience with the convenience of wireless connectivity. Featuring advanced dynamic drivers, intuitive touch controls, and a durable, lightweight design, the Aria Pod+ are perfect for everyday use. Please read this manual carefully to ensure proper use and maintenance of your new earbuds.

2. WHAT'S IN THE BOX

- BLU Aria Pod+ Wireless Earbuds
- Charging Case
- User Manual (this document)



Image: BLU Aria Pod+ earbuds shown with their charging case, illustrating the contents of the package.

3. PRODUCT OVERVIEW

The BLU Aria Pod+ earbuds feature a sleek, ergonomic design crafted from aluminum for durability and comfort. Each earbud is equipped with touch-sensitive controls and a microphone for calls.



Image: A detailed view of the left and right BLU Aria Pod+ earbuds, highlighting their design and touch control area.

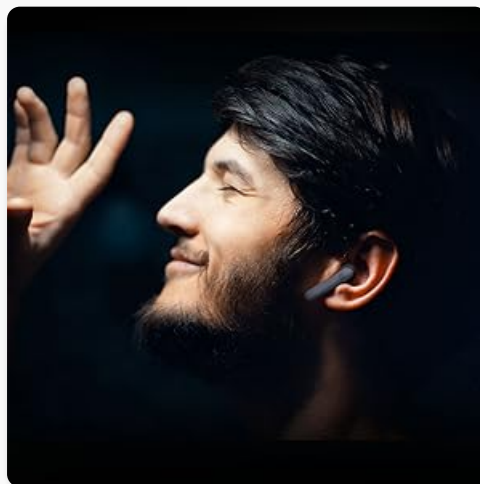


Image: An exploded diagram showing the internal components of a BLU Aria Pod+ earbud, including the dynamic driver and battery.

4. SETUP

4.1 Initial Charging

Before first use, fully charge the earbuds and the charging case. Place the earbuds into the charging case and connect the case to a power source using a compatible USB cable (not included). The indicator lights on the earbuds and case will show charging status.

4.2 Pairing with Your Device

1. Ensure the charging case is charged and the earbuds are inside.
2. Open the charging case. The earbuds will automatically power on and enter pairing mode.
3. On your device (smartphone, tablet, etc.), enable Bluetooth.
4. Search for available Bluetooth devices and select "ARIA POD+" from the list.
5. Once connected, the earbuds will indicate successful pairing.

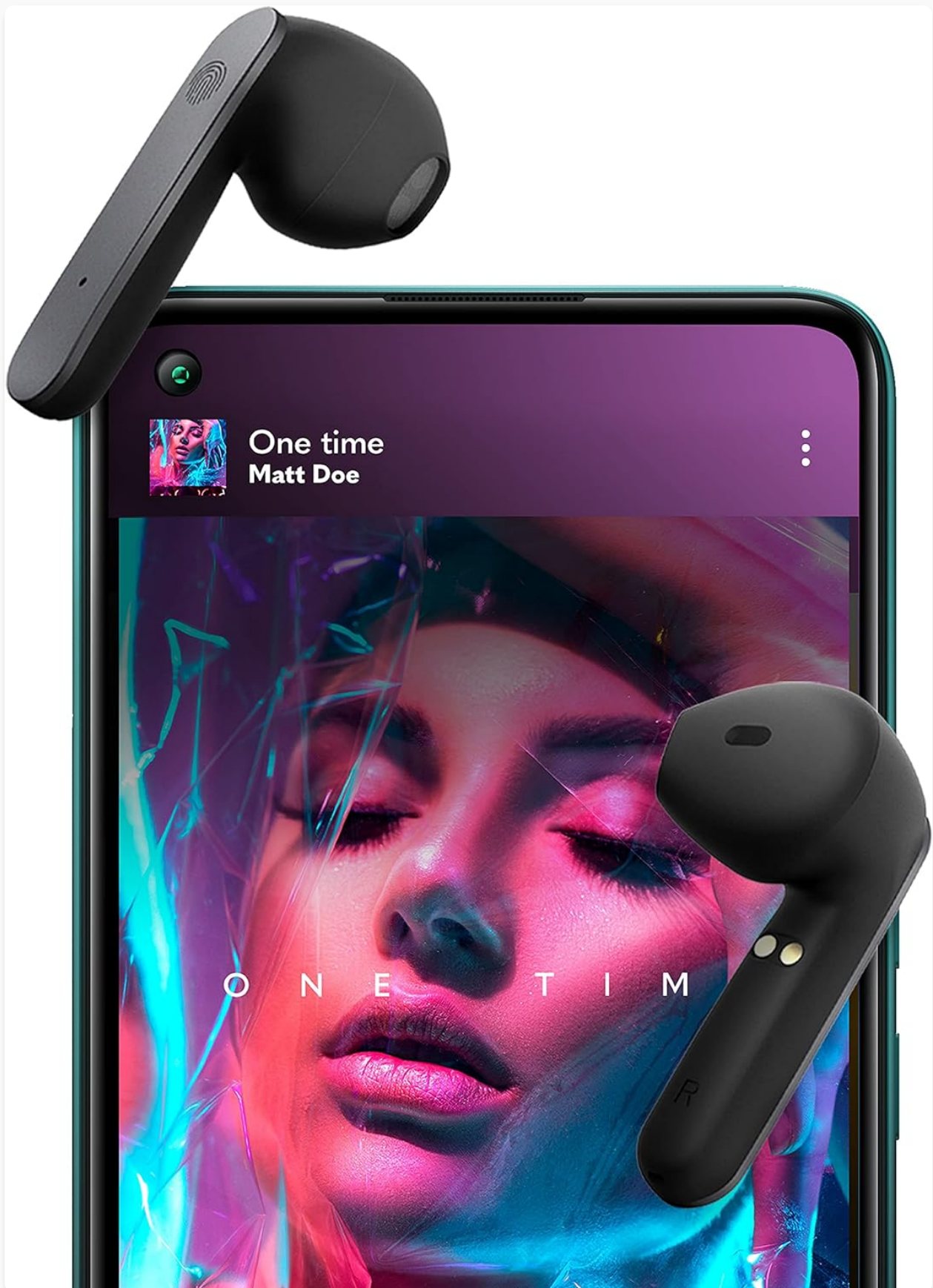


Image: The BLU Aria Pod+ earbuds are shown next to a smartphone displaying its Bluetooth pairing menu, indicating the

earbuds are ready for connection.

5. OPERATING INSTRUCTIONS

5.1 Touch Controls

The Aria Pod+ features intuitive touch controls on each earbud:

- **Play/Pause:** Double tap either earbud.
- **Answer/End Call:** Double tap either earbud.
- **Next Track:** Triple tap the right earbud.
- **Previous Track:** Triple tap the left earbud.
- **Activate Voice Assistant:** Long press either earbud for 2 seconds.

5.2 Wearing the Earbuds

Gently insert each earbud into your ear canal, ensuring a comfortable and secure fit. The earbuds are designed to stay in place during various activities.

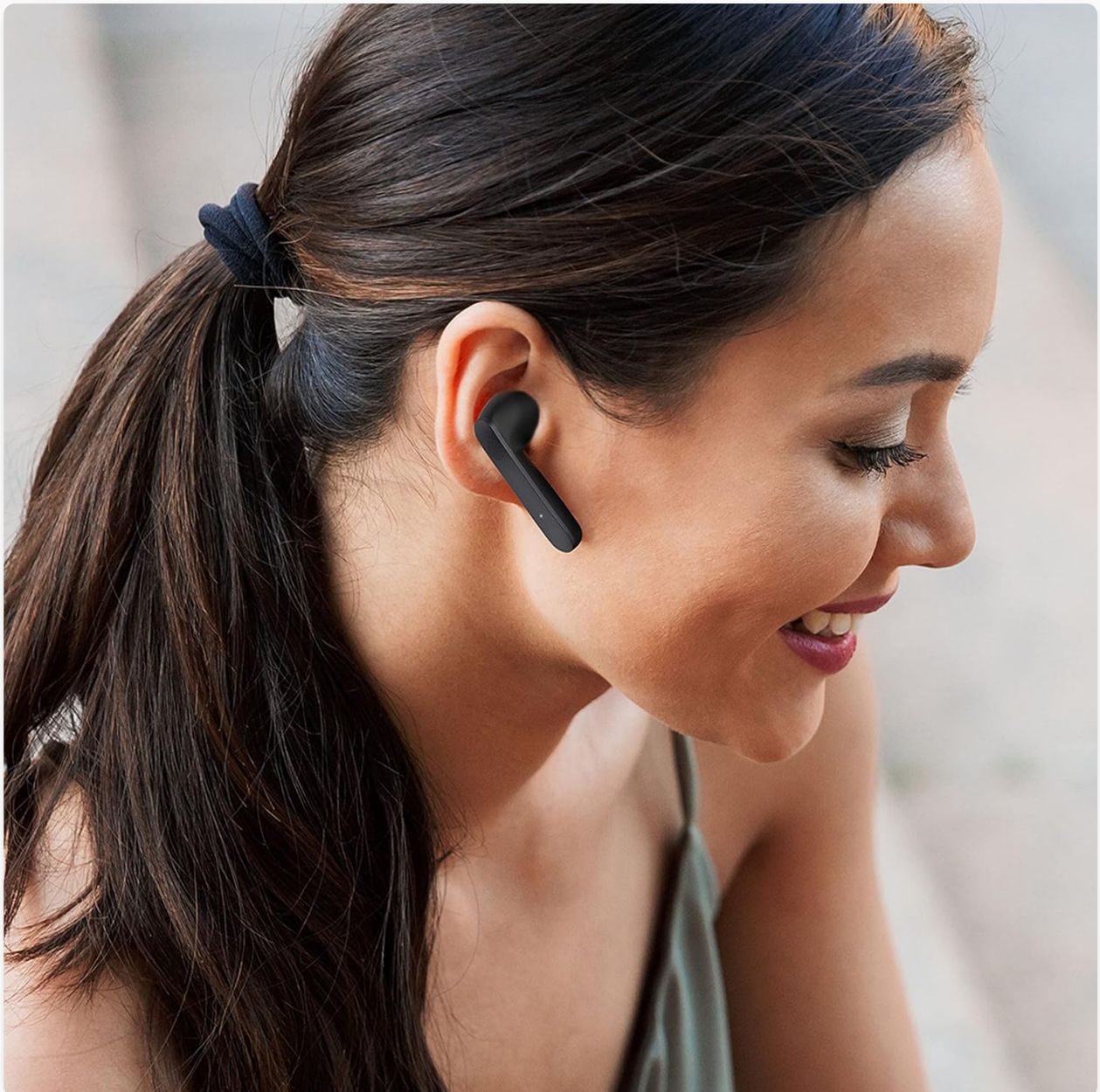


Image: A person is shown wearing a BLU Aria Pod+ earbud, demonstrating the in-ear fit and discreet profile of the device.

6. CHARGING

The BLU Aria Pod+ offers impressive battery life for extended listening.

- **Earbud Playtime:** Up to 6 hours on a single charge.
- **Total Playtime with Charging Case:** Up to 18 hours.
- **Quick Charge:** A 15-minute charge provides approximately 4 hours of listening time.

To charge the earbuds, place them back into the charging case. To charge the case, connect it to a USB power source. The case features indicator lights to show its battery level.



Image: The BLU Aria Pod+ earbuds are securely placed within their open charging case, illustrating the charging position.

Your browser does not support the video tag.

Video: An official product video demonstrating the features and usage of the BLU Aria Pod+ Wireless Earbuds, including their design, touch controls, and battery life.

7. SPECIFICATIONS

Feature	Description
Model Name	BLU Aria Pod+
Connectivity Technology	Wireless (Bluetooth 5.0)
Bluetooth Range	Up to 10 meters
Battery Life (Earbuds)	6 Hours (single charge)
Total Battery Life (with Case)	18 Hours
Quick Charge	15 minutes for 4 hours playback
Audio Driver Type	Dynamic Driver
Audio Driver Size	13 Millimeters
Control Type	Touch
Material	Aluminum (housing)
Water Resistance Level	Water Resistant
Frequency Range	20 Hz - 20,000 Hz
Item Weight	3.2 ounces
Package Dimensions	3.6 x 3.3 x 1.1 inches

8. TROUBLESHOOTING

- **Earbuds not pairing:** Ensure both earbuds are in the charging case, then open the lid to activate pairing mode. Make sure Bluetooth is enabled on your device and try searching again. If issues persist, try forgetting the device on your phone and re-pairing.
- **Only one earbud working:** Place both earbuds back into the charging case, close the lid, and then open it again. This often re-syncs them. Ensure both earbuds are charged.
- **No sound:** Check the volume level on your connected device. Ensure the earbuds are properly paired and selected as the audio output.
- **Charging issues:** Ensure the charging cable is securely connected to both the case and the power source. Check if the charging contacts on the earbuds and inside the case are clean and free of debris.
- **Touch controls unresponsive:** Ensure your fingers are clean and dry. A quick reset by placing earbuds in the case and closing the lid may resolve minor glitches.

9. MAINTENANCE AND CARE

- Clean the earbuds and charging case regularly with a soft, dry cloth.

- Avoid using abrasive cleaners or solvents.
- Keep the charging contacts on the earbuds and inside the case clean to ensure proper charging.
- Store the earbuds in their charging case when not in use to protect them and keep them charged.
- Avoid exposing the earbuds to extreme temperatures, humidity, or liquids beyond their water resistance rating.

10. SAFETY INFORMATION

- Do not disassemble, repair, or modify the product.
- Do not expose the product to fire or high temperatures.
- Avoid listening at high volume levels for extended periods to prevent hearing damage.
- Use caution when using earbuds in situations where you need to be aware of your surroundings, such as driving or walking in traffic.
- Keep out of reach of children and pets.


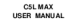

11. WARRANTY AND SUPPORT



BLU products are designed and manufactured to the highest quality standards. For information regarding warranty coverage and customer support, please refer to the warranty card included with your purchase or visit the official BLU website. Please retain your proof of purchase for warranty claims.

For technical assistance or further inquiries, please contact BLU customer support through their official channels.

© 2021 BLU Products. All rights reserved.

Related Documents - ARIAPODS+

 <p>BLU ARIA POD Quick Guide</p>	<p>BLU ARIA POD True Wireless Stereo Earbuds Quick Guide</p> <p>A quick guide for the BLU ARIA POD True Wireless Stereo Earbuds, covering initial setup, basic operations, pairing, wearing instructions, call handling, music playback, and charging.</p>
 <p>C5L MAX USER MANUAL</p>	<p>BLU C5L MAX User Manual: Setup, Features, and Safety Guide</p> <p>Explore the BLU C5L MAX smartphone with this comprehensive user manual. Learn about device features, connectivity, app usage, safety instructions, and troubleshooting tips from BLU Products.</p>
 <p>B160V User Guide</p>	<p>BLU B160V User Guide: Setup, Features, and Troubleshooting</p> <p>A comprehensive user guide for the BLU B160V smartphone, covering setup, essential features like calls, messages, internet, camera, and troubleshooting common issues.</p>

 <p>B300V</p> <p>USER MANUAL</p>	<p>BLU B300V User Manual - Setup, Features, and Troubleshooting</p> <p>Comprehensive user manual for the BLU B300V mobile phone. This guide covers device setup, key functions, making calls, sending messages, using apps, troubleshooting common issues, and important safety and regulatory information.</p>
 <p>G44+</p> <p>Quick Guide Guida Rapida Guida Rapida Guida Rapida</p>	<p>BLU G44+ Quick Guide</p> <p>A quick guide to the BLU G44+ smartphone, covering its features, functions, and basic setup.</p>
<p>C5</p> <p>USER MANUAL</p> <p>FCC ID: YHLBLC518</p>	<p>BLU C5 User Manual - Comprehensive Guide</p> <p>This comprehensive user manual for the BLU C5 mobile phone (FCC ID: YHLBLC518) covers safety, features, settings, and troubleshooting to ensure optimal device usage.</p>