

SECRUI F55 (M520+F55)

SECRUI Wireless Doorbell F55 Push Button User Manual

Model: F55 (M520+F55)

1. PRODUCT OVERVIEW

The SECRUI Wireless Doorbell F55 Push Button is designed to expand or replace existing components of your SECRUI Wireless Doorbell Kit. This additional push button offers easy installation, high performance across various temperatures, and a robust waterproof design, ensuring reliable operation in diverse environments.



Image 1.1: Front view of the SECRUI Wireless Doorbell F55 Push Button, featuring a black oval design with a central blue illuminated ring around the bell icon.

This is part of SECRUI Doorbell System



Image 1.2: Diagram illustrating the F55 Push Button's compatibility with various SECRUI doorbell receivers (M508, M520, DW508, M5373), highlighting its role as part of the complete SECRUI Doorbell System.

2. IMPORTANT SAFETY INFORMATION

Please read and understand all safety instructions before installation and use.

- Always follow the manufacturer's advice when using power tools and wear suitable protective equipment (e.g., safety goggles) when drilling holes.
- Before drilling holes in walls, check for hidden electricity cables and water pipes. The use of a cable/pipe locator is advisable if in doubt.
- The product operates with 120 volts of alternating current (AC) for the receiver (not included with this push button). Ensure proper electrical safety practices.

3. PACKAGE CONTENTS

- 1 x SECRUI Wireless Doorbell F55 Push Button
- 1 x CR2032 Battery (pre-installed or included)
- Mounting Hardware (screws, anchors, double-sided adhesive tape)
- User Manual (this document)

4. INSTALLATION

The F55 Push Button offers two primary installation methods: adhesive mounting or screw mounting.



Image 4.1: Detailed visual guide for DIY installation, showing both adhesive patch mounting and screw mounting methods for the doorbell push button.

4.1 Adhesive Patch Mounting

1. Clean the desired mounting surface thoroughly to ensure it is dry and free of dust or grease.

2. Peel off the protective film from one side of the double-sided adhesive tape and apply it firmly to the back of the push button.
3. Peel off the remaining protective film from the other side of the tape.
4. Press the push button firmly onto the cleaned surface for at least 30 seconds.

4.2 Screw Mounting

1. Separate the back plate from the push button unit.
2. Position the back plate on the desired mounting surface and mark the screw holes.
3. Drill pilot holes if necessary, and insert wall anchors if mounting into drywall or masonry.
4. Secure the back plate to the surface using the provided screws.
5. Snap the push button unit onto the secured back plate.

5. OPERATION AND PAIRING

The F55 Push Button must be paired with a compatible SECRUI Wireless Doorbell Receiver (sold separately) to function.



Provide Multiple Choices To Suit Individual Needs



5 Volume Level



Mute



Sleeping Baby



Students In Class

Image 5.1: Illustration of the doorbell receiver's volume control, showing 5 volume levels and a mute option, allowing customization for different environments like a sleeping baby's room or a classroom.

5.1 Pairing with Receiver Models M520, M508, DW508



Image 5.2: Step-by-step visual guide for pairing the F55 push button with SECRUI receiver models M520, M508, and DW508.

1. **Clear All Settings:** Press and hold the [volume] button on the receiver to power on. The host will emit "beeps beeps..." 10 times, indicating settings are cleared.
2. **Select Music:** Short press the music button to select your desired chime.
3. **Enter Pairing Mode:** Press and hold the [volume] button for more than 5 seconds. The receiver will beep once, and its LED light will flash, indicating it is in pairing state.
4. **Activate Push Button:** Short press the F55 push button (transmitter). You will hear a "ding" sound twice from the receiver, and its LED light will flash twice.
5. **Exit Pairing:** Short press any button on the receiver, or wait 20 seconds without any operation. The host will exit the pairing state.

5.2 Pairing with Receiver Model M5375

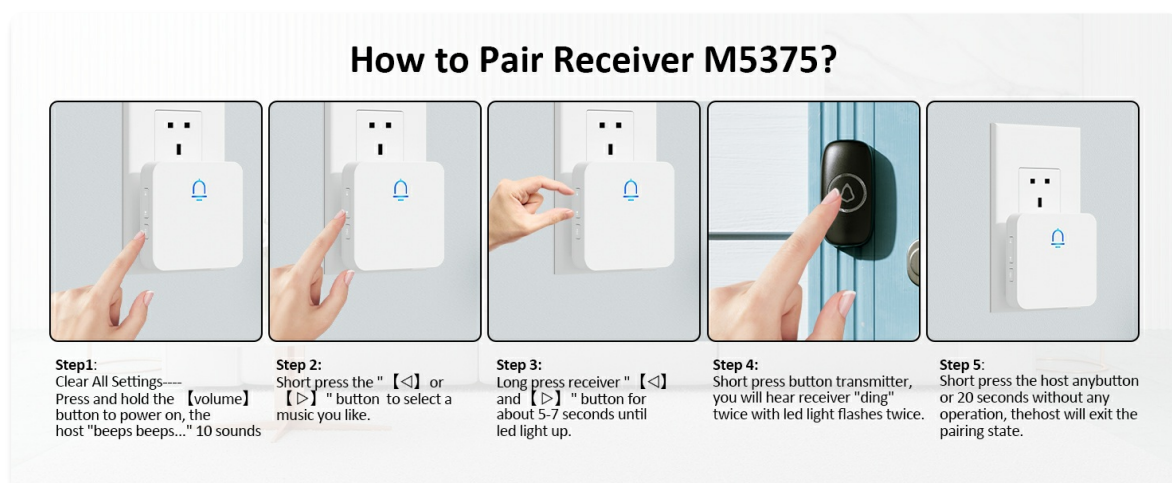


Image 5.3: Step-by-step visual guide for pairing the F55 push button with SECRUI receiver model M5375.

1. **Clear All Settings:** Press and hold the [volume] button on the receiver to power on. The host will emit "beeps beeps..." 10 times, indicating settings are cleared.
2. **Select Music:** Short press the "<" or ">" button to select your desired chime.
3. **Enter Pairing Mode:** Long press the receiver's "<" and ">" buttons for about 5-7 seconds until

the LED light illuminates.

4. **Activate Push Button:** Short press the F55 push button (transmitter). You will hear a "ding" sound twice from the receiver, and its LED light will flash twice.
5. **Exit Pairing:** Short press any button on the receiver, or wait 20 seconds without any operation. The host will exit the pairing state.

6. MAINTENANCE

The SECRUI F55 Push Button is designed for durability and requires minimal maintenance.

- **Cleaning:** Wipe the surface with a soft, damp cloth. Do not use abrasive cleaners or solvents.
- **Battery Replacement:** The push button uses a CR2032 battery. If the button's indicator light does not illuminate or the signal becomes weak, replace the battery. The average battery life is approximately 3 years.
- **Weather Resistance:** The push button has an IP55 waterproof rating, making it resistant to dust and water splashes. While designed for outdoor use, avoid submerging it in water.



Image 6.1: The SECRUI doorbell push button is shown in both hot (122°F) and cold (-4°F) weather conditions,

emphasizing its IP55 waterproof rating and suitability for various climates.



Image 6.2: Close-up of the waterproof SECURI doorbell push button, showing water droplets on its surface and indicating its dimensions (66mm height, 34mm width).

7. TROUBLESHOOTING

If you encounter issues with your SECURI Wireless Doorbell F55 Push Button, refer to the following common problems and solutions.

7.1 Push Button Not Ringing Receiver

- **Check Pairing:** Ensure the push button is correctly paired with your receiver. Follow the pairing instructions in Section 5. If you have multiple push buttons, ensure each is paired individually. Some users have reported that pairing a new button may unpair a previously connected one; re-pair all buttons if this occurs.
- **Battery Check:** Verify the CR2032 battery in the push button is installed correctly and has sufficient charge. Replace if necessary.
- **Range:** Ensure the push button is within the operational range of the receiver. Obstacles like

thick walls or metal structures can reduce range.

- **Interference:** Other wireless devices might cause interference. Try relocating the receiver or push button.

7.2 Difficulty Pairing

- **Reset Receiver:** Before attempting to pair, clear all settings on the receiver as described in Step 1 of the pairing instructions (Section 5.1 or 5.2). This ensures a clean pairing process.
- **Timing:** Pay close attention to the timing for pressing and holding buttons during the pairing process. A slight delay or holding too long/short can prevent successful pairing.
- **Receiver Model:** Confirm you are following the correct pairing instructions for your specific SECRUI receiver model (e.g., M520/M508/DW508 vs. M5375).

8. SPECIFICATIONS

Feature	Specification
Brand	SECRUI
Model Number	F55 (M520+F55)
Item Weight	0.317 ounces
Package Dimensions	2.72 x 1.81 x 1.06 inches
Color	Black
Material	ABS
Power Source	Battery-Powered (for push button)
Installation Method	Self-Adhesive & Screw-In
Temperature Range	-4°F to 140°F (-20°C to 60°C)
Waterproof Rating	IP55
Accessory Connection Type	Wireless
Switch Style	Push button
Battery Type	1 x CR2032 (included)
Average Battery Life	3 years



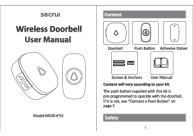



9. WARRANTY AND SUPPORT

For warranty information or technical support, please contact SECRUI customer service through the official SECRUI website or your point of purchase. Please have your product model number (F55) and

purchase details ready when contacting support.

© 2025 SECRUI. All rights reserved.

Related Documents - F55 (M520+F55)

	<p>SECRUI Wireless Doorbell M508+F55 User Manual: Setup, Installation, and Troubleshooting</p> <p>Comprehensive user manual for the SECRUI Wireless Doorbell Model M508+F55. Learn how to install, set up, pair transmitters, troubleshoot common issues, and understand specifications. Features include adjustable volume, multiple tunes, and a waterproof transmitter.</p>
	<p>SECRUI Wireless Doorbell M520+F55 User Manual</p> <p>Comprehensive user manual for the SECRUI Wireless Doorbell, Model M520+F55. Includes installation instructions, setup, operation, troubleshooting, and specifications for the doorbell and push button.</p>
	<p>SECRUI Wireless Doorbell M520+F55 User Manual</p> <p>Comprehensive user manual for the SECRUI Wireless Doorbell, Model M520+F55. Learn about setup, operation, installation, troubleshooting, and specifications for this plug-in doorbell with a 1000ft range and 58 melodies.</p>
	<p>SECRUI Wireless Doorbell M5373/F152 - Long Range, 32 Chimes, IP55 Waterproof</p> <p>Explore the SECRUI Wireless Doorbell M5373/F152, featuring a 1,000 ft long range, 32 selectable chimes, and IP55 waterproof rating. This easy-to-install, battery-operated doorbell is ideal for homes, schools, and offices.</p>
	<p>SECRUI Wireless Doorbell M520+F55 User Manual Installation & Pairing Guide</p> <p>Comprehensive user manual for the SECRUI Wireless Doorbell M520+F55. Learn about installation, pairing, specifications, and troubleshooting for this waterproof doorbell.</p>
	<p>SECRUI Wireless Doorbell M508+F55 User Manual - Installation and Operation Guide</p> <p>Comprehensive user manual for the SECRUI Wireless Doorbell, model M508+F55. This guide provides detailed instructions on installation, setup, operation, troubleshooting, and specifications for this waterproof doorbell with a 1000ft range.</p>

Documents - SECRUI – F55 (M520 F55)



[Shenzhen KERUI SMART TECHNOLOGY CO., LTD Wireless Doorbell Transmitter \(F55\) Radio Test Report](#)

This report details the radio test results for the Shenzhen KERUI SMART TECHNOLOGY CO., LTD Wireless Doorbell Transmitter, Model F55, conducted according to FCC Part 15, Subpart C (15.231(a)) standards.

lang:en score:17 filesize: 3.05 M page_count: 33 document date: 2024-06-28