

[Manuals.plus](#) /

› [Etekcity](#) /

› Etekcity Food Kitchen Scale User Manual

## Etekcity EKS-C302-KUS

# Etekcity Food Kitchen Scale User Manual

Model: EKS-C302-KUS | Brand: Etekcity

## INTRODUCTION

Welcome to your new Etekcity Food Kitchen Scale. This manual provides essential information for setting up, operating, and maintaining your scale to ensure accurate and reliable measurements for all your culinary needs. Please read this manual thoroughly before use and keep it for future reference.

## WHAT'S IN THE BOX

- 1 x Digital Kitchen Scale
- 3 x 1.5V AAA Batteries (Pre-Installed)
- 1 x Quick Start Guide

## SETUP

### Battery Installation

The Etekcity Food Kitchen Scale requires 3 x AAA 1.5V DC batteries. These are included and pre-installed. Do not mix new and used batteries.

To replace batteries:

1. Locate the battery compartment on the underside of the scale.
2. Open the battery cover.
3. Insert 3 new AAA batteries, ensuring correct polarity (+/-).
4. Close the battery cover securely.



Image showing the Etekcity Food Kitchen Scale and a comparison highlighting the use of AAA batteries for easy replacement.

## OPERATING INSTRUCTIONS

---

### Power On/Off and Tare Function

To power on the scale, press the **Z/T ON/OFF** button. The display will light up and show "0g" when ready.

To use the Tare function (zero out the weight of a container):

1. Place an empty container on the scale.
2. Press the **Z/T ON/OFF** button. The display will reset to "0g".
3. Add your ingredients to the container. The scale will display the net weight of the ingredients.

To power off the scale, press and hold the **Z/T ON/OFF** button for a few seconds until the display turns off. The scale also features an auto-off function after 3 minutes of inactivity.

# Zero Out the Weight

Remove the weight of any container with the Zero/Tare Function.

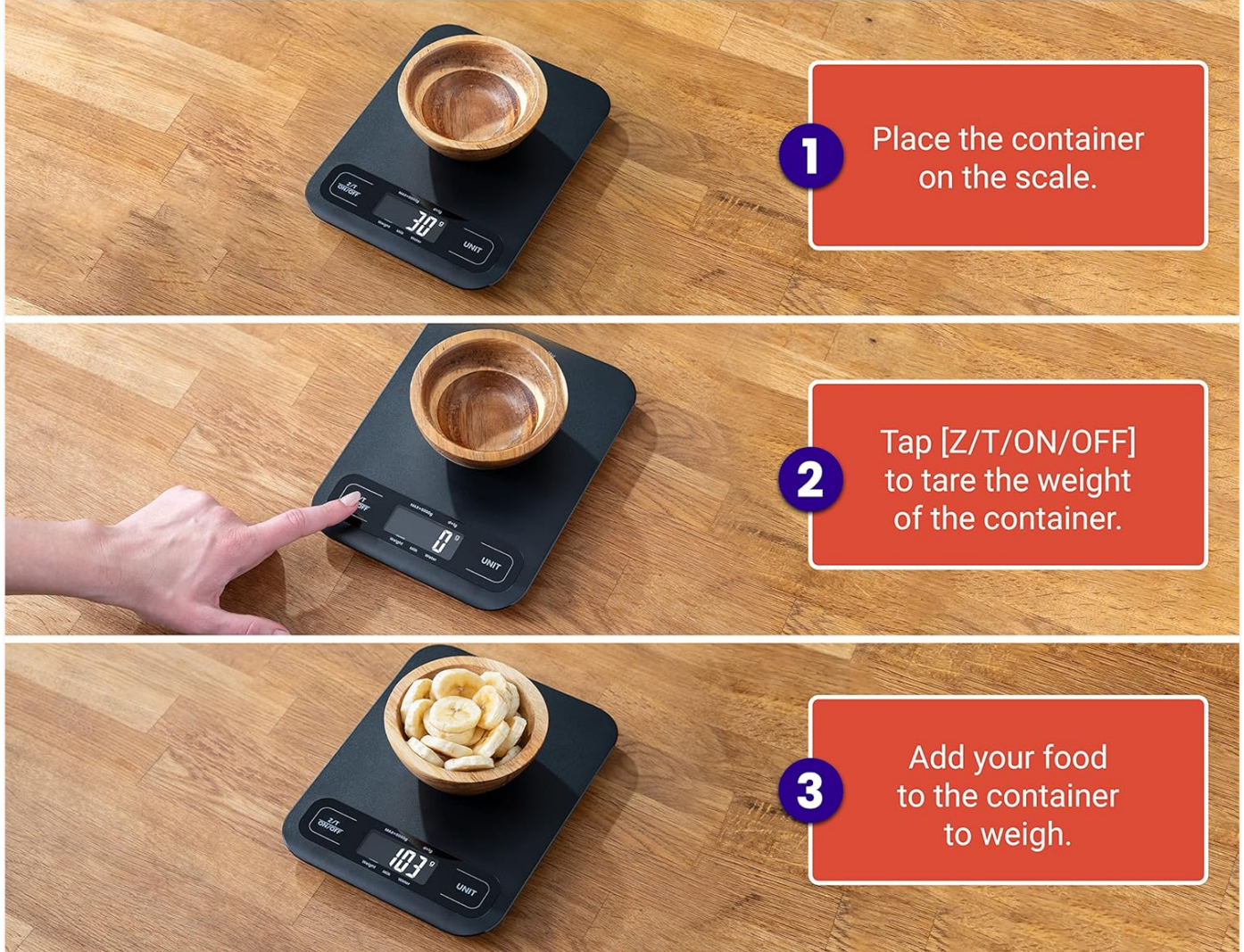


Image illustrating the three steps for using the Zero/Tare function: 1. Place container, 2. Press Z/T ON/OFF to tare, 3. Add food to weigh.

## Changing Units

To switch between measurement units (g, oz, lb:oz, ml (Milk & Water)), press the **UNIT** button. Each press will cycle through the available units.

## 5 Measuring Units

Weigh either solid ingredients or liquid ingredients such as water and milk.

oz

lb:oz

fl'oz

g

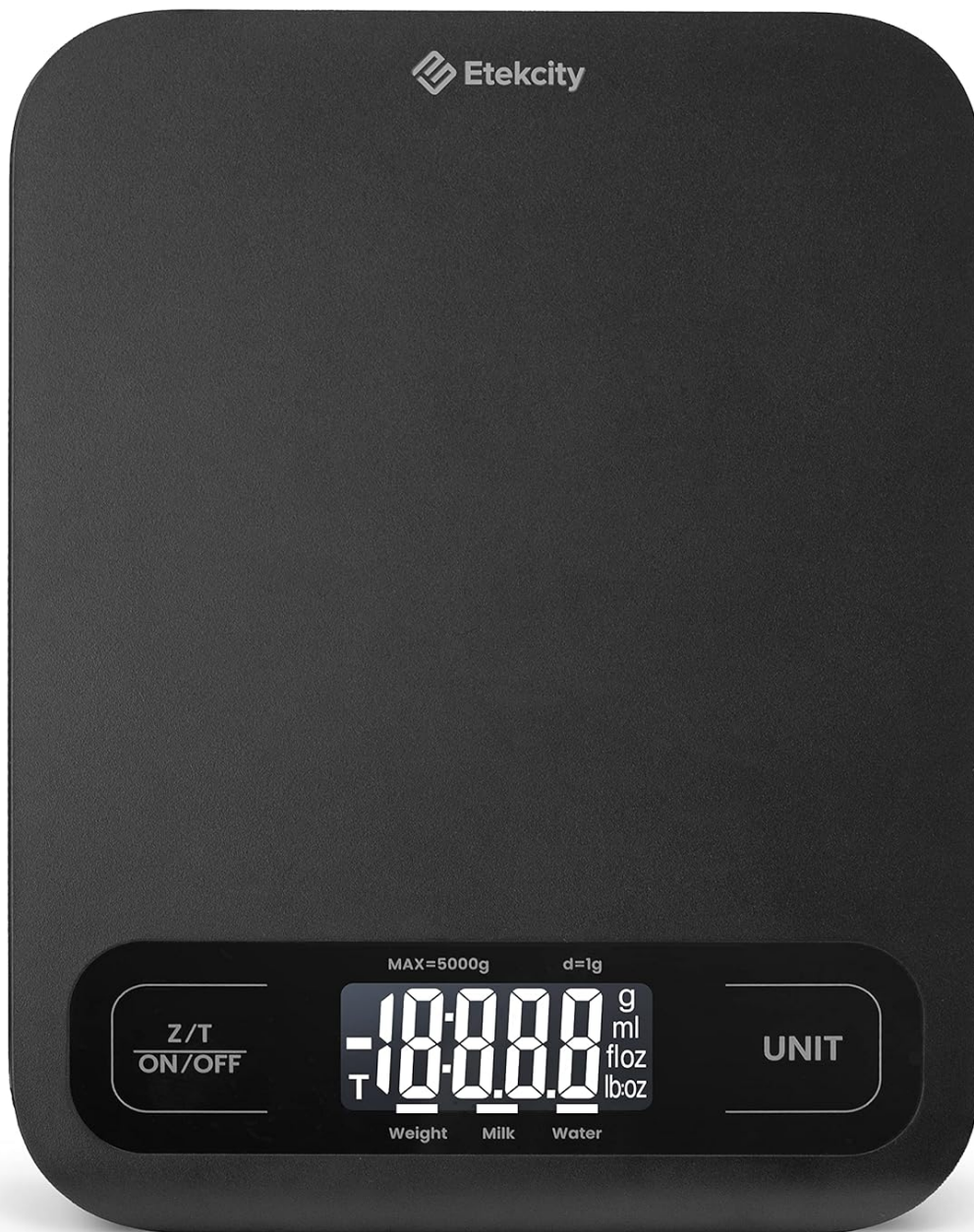
mL



Image displaying the five available measurement units: oz, lb:oz, fl'oz, g, and mL, with a bowl of milk on the scale.

### KEY FEATURES

- **Reliable Precision:** Measures in increments of 1 g with a 5,000 g (11 lbs) capacity.
- **Zero/Tare Function:** Easily remove a container's weight for accurate ingredient measurement.
- **Multiple Units:** Measure in oz, lb:oz, fl'oz (water/milk), g, or mL (water/milk).
- **Large Platform:** Dimensions of 8.0 x 6.1 x 0.7 inches (203 x 155.5 x 17.5 mm) accommodate larger items without obstructing the display.
- **Easy to Clean:** Sleek surface allows for quick and easy cleaning.



Front view of the Etekcity Food Kitchen Scale in matte black, showing the digital display and control buttons.

## SPECIFICATIONS

Property	Value
Weight Capacity	176 oz / 5000 g / 11 lbs
Units	g / oz / lb:oz / ml (Milk & Water)
Measurement Increments	1 g
Minimum Measurement	2 g
Auto-Off	3 Minutes
Power	3 x AAA 1.5V DC

Property	Value
Product Dimensions	7.99 x 6.12 x 0.69 inches; 0.04 ounces
Item model number	EKS-C302-KUS
Manufacturer	Eteckcity
Color	Large Size-Black
Special Feature	Auto Shut Off
Display Type	VA
Weight Limit	11 Pounds

## MAINTENANCE

---

### Cleaning

To clean the scale, wipe the surface with a damp cloth. Do not immerse the scale in water or use abrasive cleaners. Ensure the scale is dry before storage or next use.

# Easy to Clean



A hand wiping the surface of the Etekcity Food Kitchen Scale with a cloth, demonstrating its easy-to-clean design.

## TROUBLESHOOTING

### Common Issues

- **Display not turning on:** Check battery installation and ensure batteries are not depleted. Replace if necessary.
- **Inaccurate readings:** Ensure the scale is placed on a flat, stable surface. Avoid placing it near strong electromagnetic fields. Recalibrate by turning off and on, then taring.
- **"Lo" or "Err" message:** "Lo" indicates low battery; replace batteries. "Err" indicates overload; remove items immediately to prevent damage.

For further assistance, please refer to the official user guide or contact Etekcity customer support.

## WARRANTY & SUPPORT

For detailed warranty information and customer support, please visit the official Etekcity website or refer to the full [User Manual](#)

(PDF).

