

LENRUE A39PRO

LENRUE A39PRO Computer Speakers User Manual

MODEL: A39PRO

1. Introduction

Thank you for choosing the LENRUE A39PRO Computer Speakers. This wired USB-powered soundbar is designed to deliver clear 10W stereo sound for your PC desktop, laptop, or tablet. Its plug-and-play functionality ensures easy setup, enhancing your audio experience for movies, music, and games.

Key features include upgraded 2x5W technology for crystal clear sound, a convenient top-mounted volume knob for easy adjustments, and a colorful breathlight design to enhance your workspace ambiance. The speaker is compatible with any PC, laptop, or tablet that has a standard 3.5mm headphone jack.



Figure 1: LENRUE A39PRO Computer Speakers

2. Setup

The LENRUE A39PRO speakers are designed for simple plug-and-play operation. No additional drivers or software are required for most systems.

2.1 Connecting the Speakers

1. Locate the two cables attached to the A39PRO speaker: one USB cable for power and one 3.5mm AUX cable for audio.
2. Plug the USB cable into an available USB port on your computer, laptop, power bank, or a 5V/2A adapter. This provides power to the speaker.
3. Plug the 3.5mm AUX cable into the standard 3.5mm headphone jack on your computer, laptop, tablet, or MP3 player. This transmits the audio signal.
4. Ensure both cables are securely connected.



Figure 2: Connection Diagram for A39PRO Speakers

2.2 Compatibility

The A39PRO speakers are widely compatible with various operating systems and devices, including Unix, Chrome OS, Windows, macOS, and Linux, as long as they feature a standard 3.5mm audio jack and a USB port for power. If your device does not have a 3.5mm headphone port, an extra adapter (not included) may be required.



Figure 3: Wide Compatibility

3. Operating Instructions

3.1 Volume Control

Adjust the volume using the knob located on the top of the speaker. Rotate the knob clockwise to increase the volume and counter-clockwise to decrease it. For optimal sound, it is recommended to set your computer's volume to about 85% and the multimedia player's volume to 100%, then fine-tune with the speaker's knob.

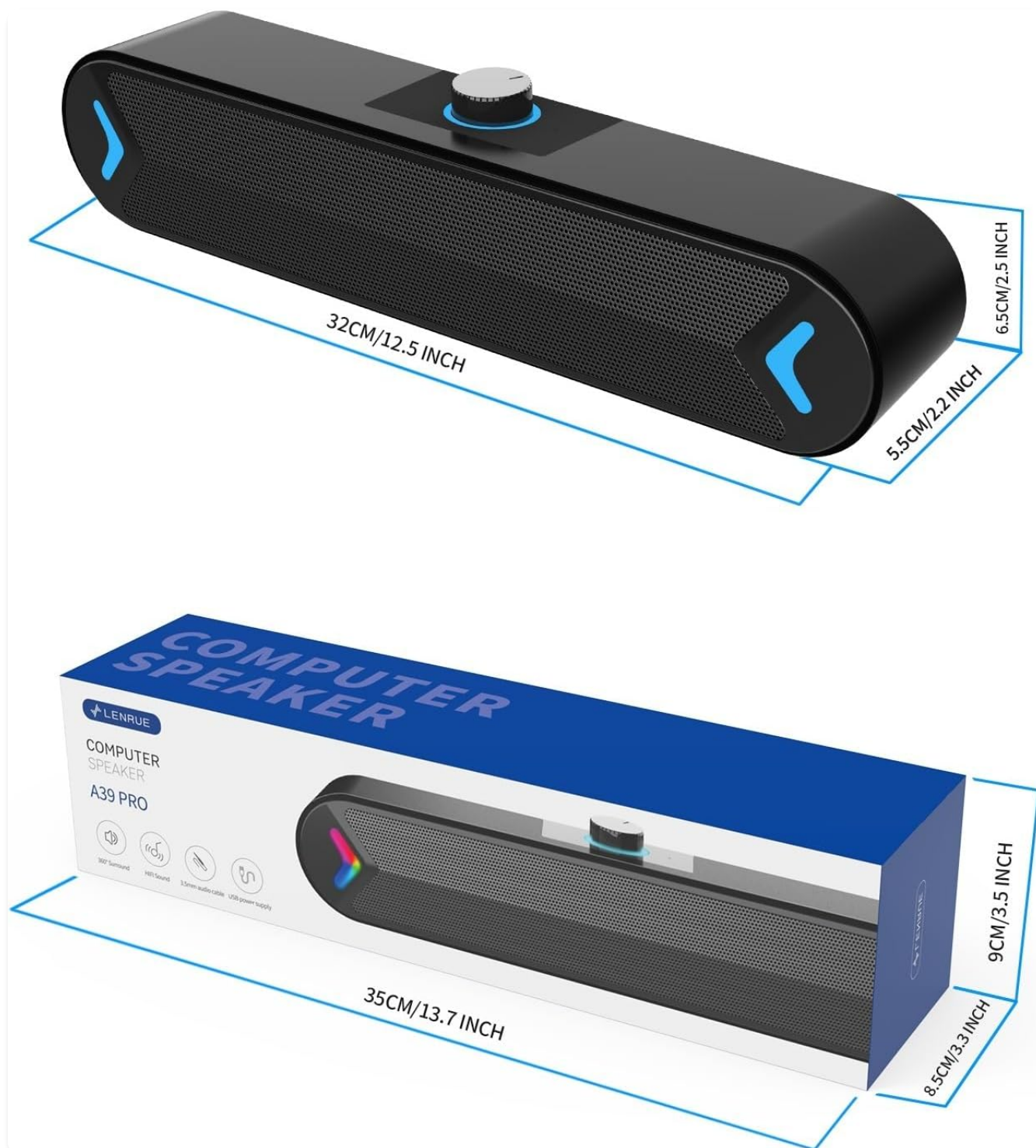


Figure 4: Volume Control Knob

3.2 LED Light Control

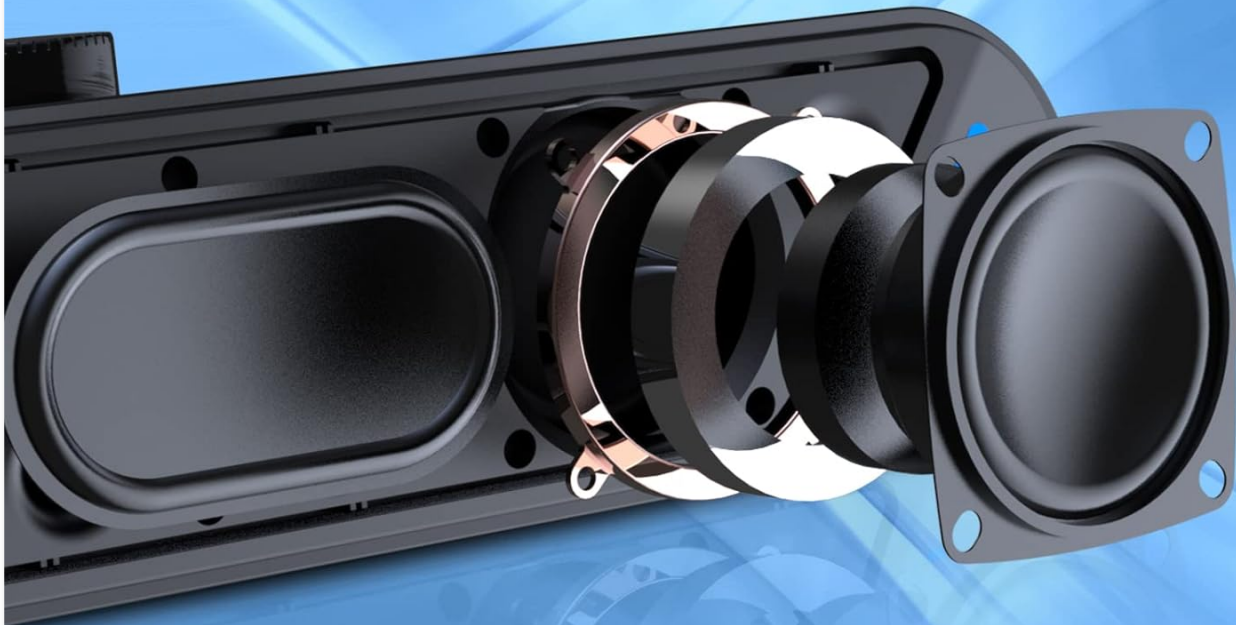
The speaker features a colorful breathlight design. You can control the LED lights using the block switch located on the back of the soundbar. There are three positions for this switch:

- **LED position:** Both LED lights and speaker are ON.
- **ON Position:** LED lights are OFF, speaker is ON.
- **OFF position:** Both LED lights and speaker are OFF.

UPGRADED

HIFI STEREO SOUND TECH

Quality DUAL 5W Speakers and Independent Bass Diaphragm



Noise reduction



2 Drivers



HIFI stereo

Figure 5: Power/LED Switch on Rear Panel

4. Maintenance

To ensure the longevity and optimal performance of your LENRUE A39PRO speakers, follow these simple maintenance guidelines:

- **Cleaning:** Use a soft, dry cloth to wipe the speaker's surface. Avoid using liquid cleaners or abrasive materials, as they may damage the finish or internal components.
- **Storage:** When not in use for extended periods, store the speakers in a cool, dry place away from direct sunlight and extreme temperatures.
- **Handling:** Avoid dropping the speakers or subjecting them to strong impacts, which can damage internal circuitry.

5. Troubleshooting

If you encounter any issues with your LENRUE A39PRO speakers, please refer to the following common troubleshooting steps:

- **No Sound Output:**

- Ensure both the USB power cable and the 3.5mm audio cable are securely plugged into their respective ports.
- Check the volume knob on the speaker and ensure it is turned up.
- Verify that the correct audio output device is selected on your computer or playback device. (Refer to Figure 6 for an example of checking audio settings).
- Confirm that the LED/Power switch on the back of the speaker is not in the 'OFF' position.

- **Low Volume:**

- Increase the volume using the knob on the speaker.
- Adjust the volume settings on your computer or multimedia player to a higher level.

- **LED Lights Not Working:**

- Check the block switch on the back of the soundbar. Ensure it is in the 'LED position' for lights to be on.

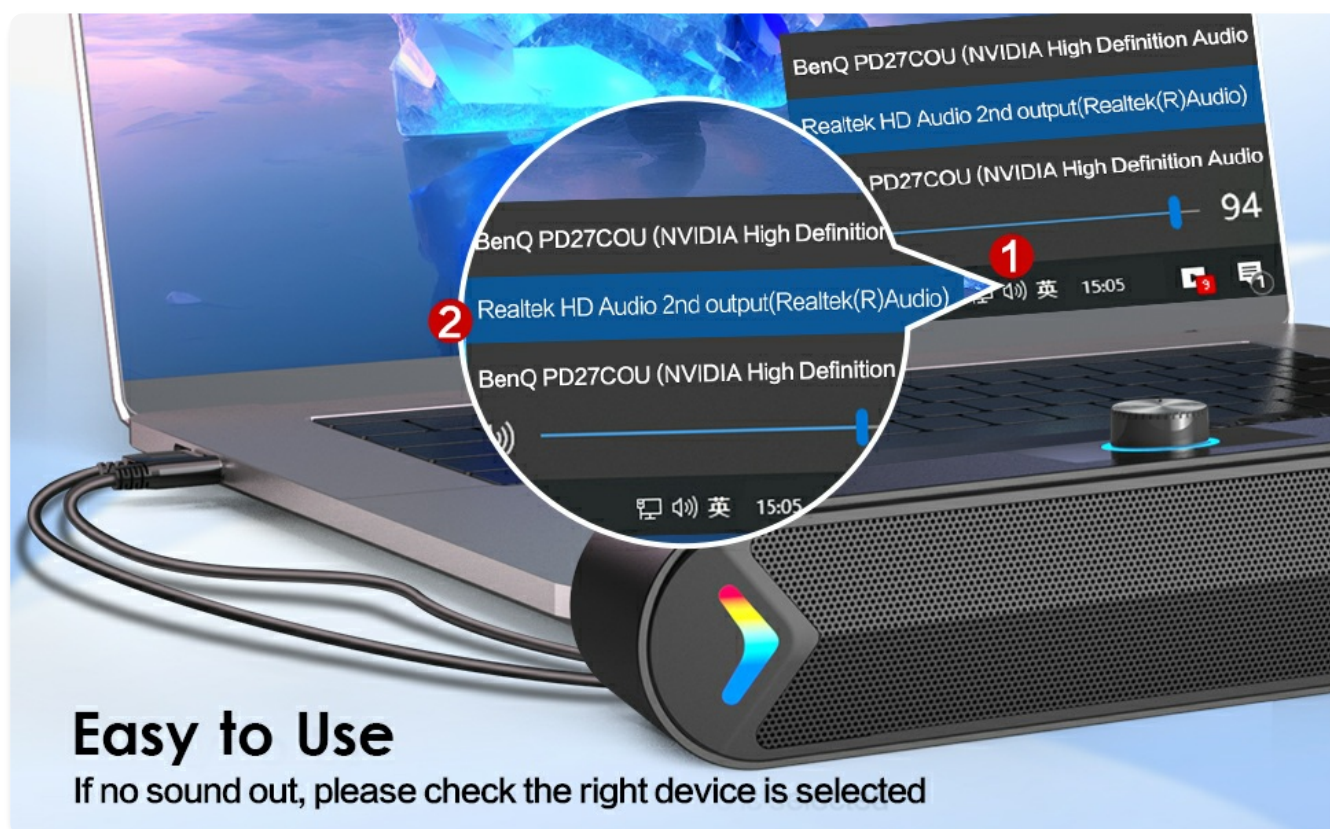


Figure 6: Checking Audio Output Device Settings

6. Specifications

Feature	Detail
Model Name	A39PRO
Brand	LENRUE

Speaker Type	Multimedia
Connectivity Technology	USB
Audio Output Mode	Stereo
Speaker Maximum Output Power	10 Watts (2x5W dual drivers)
Input Voltage	5 Volts
Frequency Response	20 Hz
Impedance	4 Ohm
Product Dimensions	12.6"D x 2.56"W x 2.17"H
Item Weight	1.17 pounds (530 Grams)
Control Method	Knob control
Special Feature	Wired Stereo sound Computer Speaker, Colorful Breathlight Design

7. Warranty and Support



The LENRUE A39PRO Computer Speakers come with a **Limited Warranty**. For specific terms and conditions of the warranty, please refer to the product packaging or contact customer support.

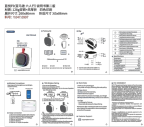



For any technical assistance, troubleshooting not covered in this manual, or warranty inquiries, please contact LENRUE customer service:

- **Email:** lenrueafterservice@outlook.com

© 2024 LENRUE. All rights reserved.

Related Documents - A39PRO

	<p>Lenrue A35 Wireless Speaker User Manual: Features, Setup, and Operation</p> <p>Comprehensive user manual for the Lenrue A35 wireless speaker. Learn about its product parameters, functions, setup for Wireless, AUX, and TF card modes, customer service information, and FCC compliance. Get the most out of your Big Sound, Bigger Bass speaker.</p>
	<p>LENRUE A2 Bluetooth Speaker: AUX Connection Guide</p> <p>Instructions on how to connect the LENRUE A2 Bluetooth Speaker using the AUX input for audio playback.</p>

	<p>Lenrue F9 Wireless Speaker User Manual</p> <p>Detailed user manual for the Lenrue F9 Wireless Speaker. Learn about packing contents, playback controls, technical specifications, connecting via Bluetooth, TWS stereo pairing, Alexa setup, and FCC compliance information.</p>
	<p>LENRUE F62 Wireless Speaker User Manual</p> <p>User manual for the LENRUE F62 Portable Wireless Speaker, covering package contents, wireless connection, button functions, specifications, TF card mode, TWS pairing, Alexa connection, and customer support.</p>
	<p>LENRUE Soundmate Wireless Speaker User Manual</p> <p>Comprehensive user manual for the LENRUE Soundmate Wireless Speaker, covering operation, true wireless pairing, Alexa connection, specifications, and FCC compliance.</p>
	<p>LENRUE F21 Portable Wireless Speaker User Manual</p> <p>User manual for the LENRUE F21 Portable Wireless Speaker, detailing its features, specifications, connection methods, TWS pairing, Alexa connection, and usage tips.</p>