

Carpuride W7001

CARPURIDE W7001 Double Din Car Stereo User Manual

Model: W7001

1. INTRODUCTION

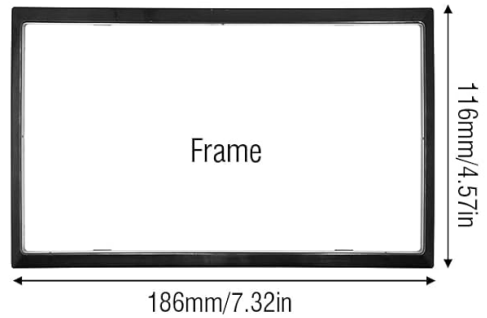
This manual provides comprehensive instructions for the installation, operation, and maintenance of your CARPURIDE W7001 Double Din Car Stereo. Please read this manual thoroughly before using the product to ensure proper functionality and safety. Keep this manual for future reference.

2. WHAT'S IN THE BOX

Upon opening the package, verify that all the following components are included:

- CARPURIDE W7001 Double Din Car Stereo Unit
- Remote Control
- Rear View Camera
- Camera Wire
- Wire Harness A / Wire Harness B
- Mounting Brackets (2)
- Disassembly Tool
- User Manual
- Screws for installation
- Face Plate

Packing List



Remote



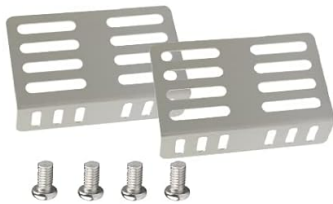
Rear View Camera



Camera Wire



User Manual



Brackets



Disassembly Tool



Wire Harness A/Wire Harness B

Image: All components included in the CARPURIDE W7001 Double Din Car Stereo package.

3. SETUP AND INSTALLATION

The CARPURIDE W7001 is designed for standard double din car stereo slots. Professional installation is recommended. Ensure the vehicle's power is disconnected before beginning installation.

3.1 Wiring Connections

Refer to the wiring diagram provided in the user manual for detailed connections. Key connections include:

- **Power Supply:** Connect to 12-14.4V DC, Negative Ground.
- **Speaker Outputs:** Connect to vehicle speakers (4x60W output).
- **Backup Camera Input:** Connect the included rear view camera.
- **Antenna:** Connect your vehicle's radio antenna.
- **GPS Antenna:** Connect the GPS antenna for navigation features.
- **Steering Wheel Control (SWC):** Connect to your vehicle's SWC wires for integrated control.
- **USB/AUX/TF Card:** Ports for media input.

Touch screen/7 inch standard size/ Movie play



Image: Rear panel connections of the stereo unit.

3.2 Mounting

Use the provided mounting brackets and screws to secure the unit into your vehicle's double din slot. Ensure the unit is firmly in place before reassembling the dashboard.

4. OPERATING INSTRUCTIONS

4.1 Power On/Off

Press the power button on the front panel to turn the unit on or off. The unit will typically power on automatically with the vehicle's ignition.

4.2 Touchscreen Interface

The 7-inch capacitive touchscreen allows for intuitive control. Navigate through menus and select functions by tapping or swiping. The interface includes icons for Phone, Maps, Messages, Now Playing, CarHome, Calendar, Settings, and various media applications.

Touch screen/7 inch standard size/ Movie play



Image: Touchscreen interface displaying main menu options.

4.3 CarPlay & Android Auto

Connect your compatible iPhone or Android smartphone via USB to activate CarPlay or Android Auto. This allows you to access navigation, make calls, send messages, and play music directly from your phone's interface displayed on the stereo screen.



Image: CarPlay and Android Auto interfaces on the stereo.

4.4 Bluetooth Connectivity

Pair your smartphone with the stereo via Bluetooth for hands-free calling and wireless audio streaming. Access the Bluetooth menu to search for devices and connect.



Image: Bluetooth calling and music playback.

4.5 Mirror Link

Mirror Link allows you to display your smartphone's screen directly onto the car stereo. Connect your phone via USB and follow the on-screen prompts to activate Mirror Link. This feature supports both iOS and Android devices.

4.6 Radio (FM/AM)

Select the Radio icon from the main menu. Use the touchscreen to scan for stations, manually tune, and save your favorite FM/AM frequencies.

4.7 Media Playback (USB/TF/AUX)

Insert a USB drive or TF card into the designated ports, or connect an external audio device via the AUX input. Select the corresponding media source from the main menu to play audio or video files.

4.8 Steering Wheel Control (SWC)

If connected, use your vehicle's steering wheel controls to manage basic stereo functions such as volume, track skipping, and answering calls, enhancing driving safety.

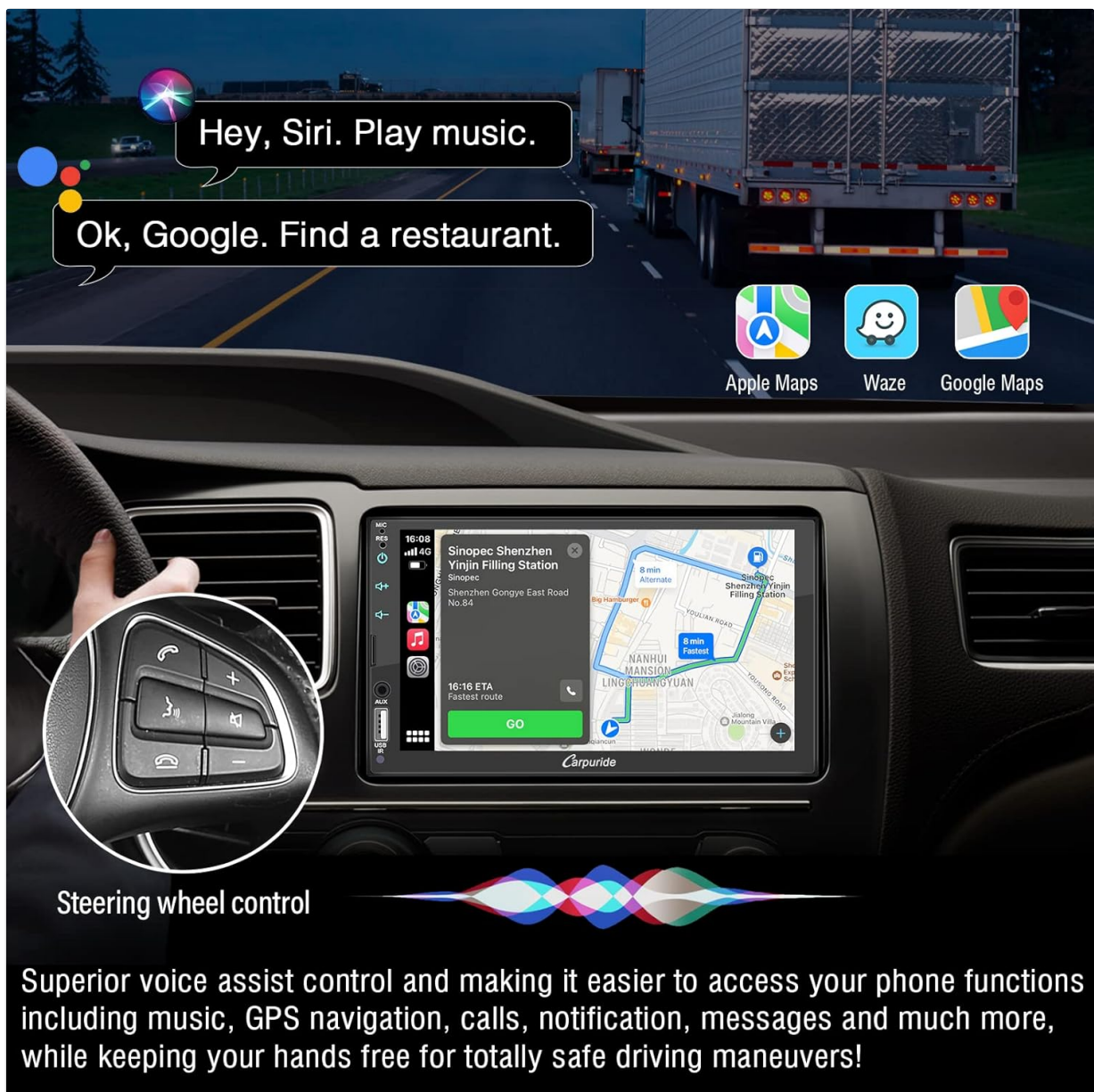


Image: Steering wheel control integration for voice commands and navigation.

5. BACKUP CAMERA FUNCTIONALITY

When the vehicle is shifted into reverse, the stereo automatically displays the feed from the connected backup camera. This feature provides a wide-angle view with parking guidelines to assist with safe maneuvering.



Image: Backup camera display with parking guidelines.

Your browser does not support the video tag.

Video: Demonstration of the car stereo's features, including CarPlay, music playback, radio, and equalizer settings.

6. AUDIO SETTINGS

Access the audio settings menu to customize your sound experience. The unit features a 16-band equalizer (EQ) to adjust bass, treble, and other frequency ranges. You can also adjust balance and fader settings to optimize sound distribution within your vehicle.

7. GENERAL SETTINGS

The settings menu allows you to configure various aspects of the stereo:

- **Time and Date:** Set the current time and date.
- **Language:** Select your preferred display language.
- **LED Light:** Customize the color of the unit's LED backlighting.

- **Parking Safety:** Enable or disable parking brake safety features for video playback.

8. SPECIFICATIONS

Feature	Detail
Product Dimensions	2.6"D x 7"W x 4"H (65mm x 178mm x 102mm)
Item Weight	1.92 pounds
Item Model Number	W7001
Power Supply Voltage	12-14.4V DC, Negative Ground
Max Current Consumption	15A
Max Output Power	4x60W
Connectivity Technology	Auxiliary, Bluetooth, USB
Controller Type	Android, iOS
Special Features	Touchscreen, CarPlay, Android Auto, Mirror-Link, Backup Camera
Compatible Devices	Smartphone, Speaker
Connector Type	3.5mm Jack, USB
Audio Output Mode	Stereo
Video Encoding	AVI, MP4, RM, RMVB, 3GP

9. TROUBLESHOOTING

If you encounter issues with your CARPURIDE W7001, please refer to the following common troubleshooting steps:

- **No Power:** Check all power connections, ensure the fuse is not blown, and verify the vehicle's ignition is on.
- **No Sound:** Verify speaker connections, check volume levels, and ensure the correct audio source is selected. Check the equalizer settings.
- **CarPlay/Android Auto Not Connecting:** Ensure your phone is compatible, use a high-quality USB cable, and check phone settings for CarPlay/Android Auto permissions.
- **Backup Camera Not Displaying:** Check the camera's power and video signal connections. Ensure the reverse gear signal wire is correctly connected.
- **Touchscreen Unresponsive:** Try restarting the unit. If the issue persists, a factory reset may be necessary (refer to the full user manual for instructions).
- **Bluetooth Pairing Issues:** Ensure Bluetooth is enabled on both the stereo and your phone. Delete previous pairings and try reconnecting.

For more detailed troubleshooting or persistent issues, please contact customer support.

10. WARRANTY AND SUPPORT

Your CARPURIDE W7001 Double Din Car Stereo comes with a manufacturer's warranty. Please refer to the warranty card included in your package for specific terms and conditions. For technical support, product inquiries, or warranty claims, please contact CARPURIDE customer service through the contact information provided in your product documentation or on the official CARPURIDE website.