

Manuals+

[Q & A](#) | [Deep Search](#) | [Upload](#)

[manuals.plus](#) /

› [FeiyuTech](#) /

› [FeiyuTech SCORP-C2 Gimbal Stabilizer User Manual](#)

FeiyuTech FeiyuTech SCORP-C2

FeiyuTech SCORP-C2 Gimbal Stabilizer User Manual

Model: FeiyuTech SCORP-C2

INTRODUCTION

This user manual provides comprehensive instructions for the FeiyuTech SCORP-C2 Gimbal Stabilizer. It covers product features, setup, operation, maintenance, and troubleshooting to ensure optimal performance and longevity of your device. The SCORP-C2 is designed for DSLR and mirrorless cameras, featuring built-in AI tracking, native vertical shooting, and a robust 3.5kg payload capacity.

WHAT'S IN THE BOX

Please verify that all items listed below are included in your package:

- FeiyuTech SCORP C2 Stabilizer
- USB 2.0 to Type-C Charging Cable
- Type-C to Type-C Camera Control Cable
- Tripod
- Fixed Plate
- Quick Release Plate
- Secondary Quick Release Plate
- Lens Holder
- Lens Holder Fixing Knob
- Camera Fixing Screw
- Hexagonal Wrench



Image: All components included in the FeiyuTech SCORP-C2 package, laid out clearly with numbers indicating each part.

PRODUCT OVERVIEW

The FeiyuTech SCORP-C2 features an ergonomic design with intuitive controls for seamless operation.



Image: A detailed diagram highlighting the control buttons on the FeiyuTech SCORP-C2 gimbal, including Joystick, Record Button, Mode Button, Left Button, Right Button, and Auto Rotation Button.

Key components include:

- **Integrated Grip:** Ergonomically designed for comfortable and extended use.
- **OLED Color Display:** Visualizes status and allows for precise parameter adjustments.
- **Multi-Function Electric Magic Wheel:** High-precision magnetic sensor knob for control over axis rotation, follow focus, or zoom.
- **AI Tracking Module:** Built-in for fast and accurate subject tracking without an app.
- **Open Mounting Platform:** Allows flexible camera positioning.

SETUP GUIDE

1. Attaching the Tripod

Screw the included tripod onto the 1/4-inch thread at the bottom of the gimbal handle. Ensure it is securely tightened for stability.

2. Mounting the Camera

1. Attach the quick release plate to the bottom of your camera using the camera fixing screw.
2. Slide the quick release plate with the camera onto the fixed plate on the gimbal until it locks into place.
3. Adjust the camera's position on the quick release plate to ensure it is centered and stable.



Image: The FeiyuTech SCORP-C2 gimbal with a camera securely mounted, demonstrating the proper attachment.

3. Balancing the Gimbal

Proper balancing is crucial for optimal performance and to prevent motor strain. Follow these steps:

1. **Tilt Axis Balance:** Unlock the tilt axis. Adjust the camera forward or backward on the quick release plate until the camera remains level when tilted at any angle. Tighten the lock.
2. **Roll Axis Balance:** Unlock the roll axis. Adjust the horizontal arm until the camera remains level when rotated. Tighten the lock.
3. **Pan Axis Balance:** Unlock the pan axis. Hold the gimbal horizontally and adjust the vertical arm until the gimbal remains stable without drifting. Tighten the lock.



Image: The FeiyuTech SCORP-C2 gimbal with a camera mounted in a vertical shooting orientation, illustrating the native vertical shooting capability.

4. Connecting Camera Control Cables

Use the provided Type-C to Type-C camera control cable to connect your camera to the gimbal for integrated control

functions.

OPERATING INSTRUCTIONS

Powering On/Off

Press and hold the power button for 3 seconds to power on or off the gimbal. The OLED display will illuminate upon startup.

Mode Selection and AI Tracking

The SCORP-C2 features a built-in AI tracking module. To activate AI tracking, ensure the AI tracking module is enabled via the settings on the OLED display. The gimbal can track subjects without the need for an external app.



Image: A camera mounted on the FeiyuTech SCORP-C2 gimbal, with blue light rays indicating the AI tracking module actively focusing on a subject.

Gesture Control: The gimbal supports various gestures for control:

- **Open Palm:** Shoot/Record
- **Thumbs Opposite Direction:** Start/Stop Tracking
- **OK Gesture:** Start/Stop Face Tracking
- **Double L-shaped Gesture:** Custom Framing
- **Double Thumb-up Gesture:** Turn off gesture control

Supports gesture control-perfect shots, near or far.



Image: Illustrations of various hand gestures recognized by the FeiyuTech SCORP-C2 for controlling functions like shooting, tracking, and framing.

Native Vertical Shooting

The SCORP-C2 allows for native vertical shooting without additional accessories. Double-press the F1 button to quickly switch between horizontal and vertical shooting modes.



Image: A close-up of the FeiyuTech SCORP-C2 handle, highlighting the F1 button used for one-tap vertical mode switching.

Using the Multi-Function Electric Magic Wheel

The magic wheel provides precise control. Rotate it to adjust axis rotation, follow focus, or zoom, depending on the selected mode.

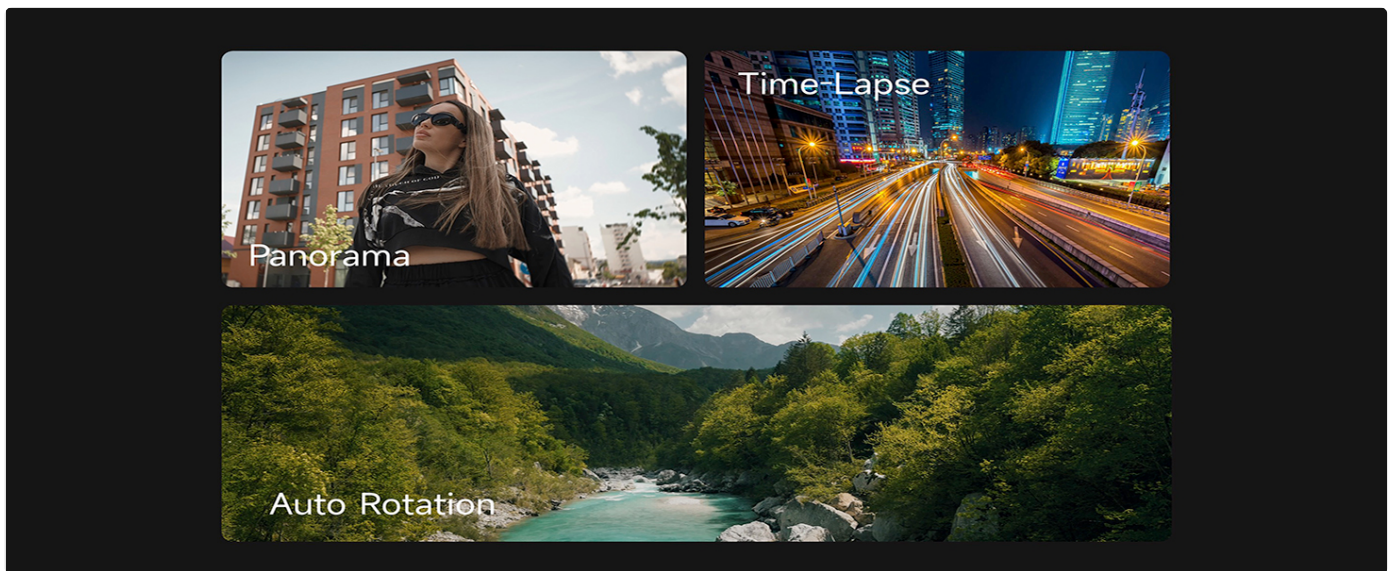


Image: A close-up of the FeiyuTech SCORP-C2's multi-function electric magic wheel, emphasizing its design and placement for precise control.

A/B Point Trajectory Memory

Preset two points (A and B) to define camera movement paths. Customize speed, angle, and dwell time for repeatable cinematic moves.

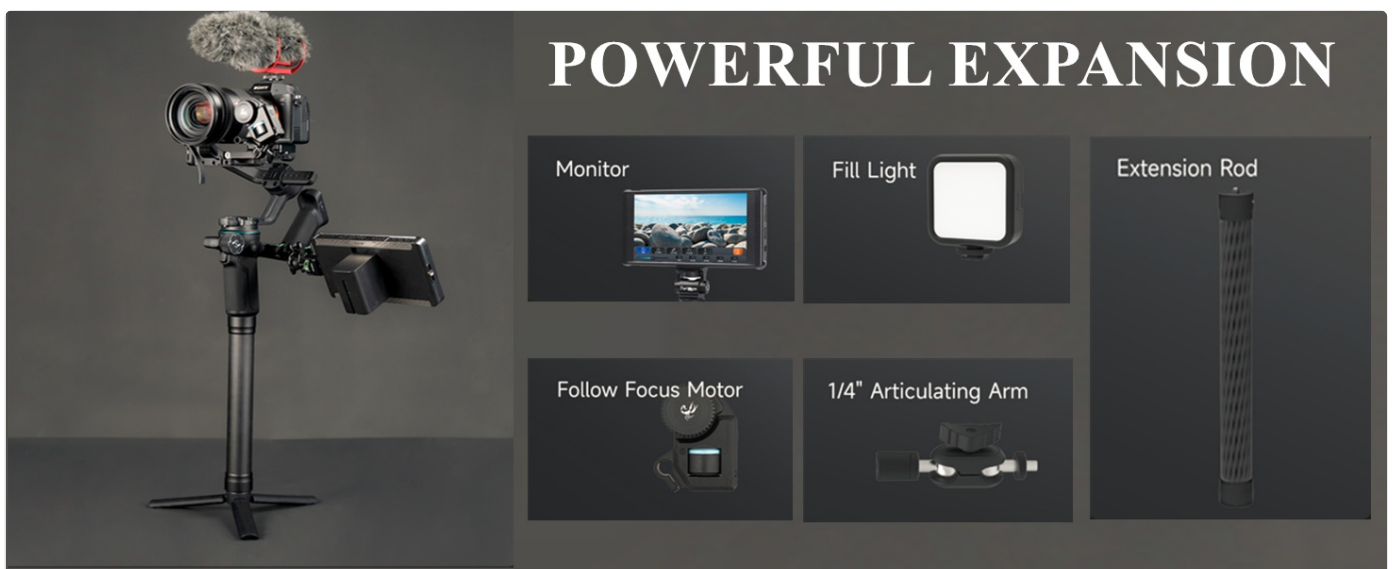


Image: A hand operating the FeiyuTech SCORP-C2, with focus on the A/B buttons used for setting trajectory memory points.

Battery Life and Charging

The SCORP-C2 offers up to 14 hours of ultra-long battery life. Charge the gimbal using the provided USB-C charging cable.



	SCORP 3	SCORP-C2	SCORP-C
Max Payload	3500g	3500g	2500g
Net Weight	1368g	1320g	1200g
Theoretical Battery Life	14H	14H	10H
Underslung Handle	Detachable	Non-detachable	Non-detachable
3-Axis Motor Locks	Buckle design	Buckle design	Knob design
AI Tracking	✓	✓	X
Touchscreen Display	✓	X	X
Status Indicator Light	✓	✓	X
Extended Quick Release Plate	✓	✓	X

Image: An illustration of the FeiyuTech SCORP-C2 gimbal's handle, showing a glowing battery icon to represent its long battery life.

Expansion Options

The gimbal supports various accessories for enhanced functionality:

- Fill Light
- Monitor
- Follow Focus Motor
- 1/4" Articulating Arm
- Extension Rod

Nikon / Sigma / BMPCC Camera Compatibility List / Lens Compatibility List							
Bluetooth Control	Type-C Cable Control	Model	Tested Lens ✓	Model	Tested Lens ✓	SIGMA Type-C Cable Control	
Z30	Z5	Z6	· NIKKOR Z 35mm f/1.8 · 18-140mm f/3.5-5.6G ED VR	D7500	· NIKKOR 18-140mm f/3.5-5.6 G ED VR	FP	
Z50	Z6	Z6 II	· NIKKOR Z 50mm f/1.8 S	D850	· AF-S NIKKOR 24-120mm f/4G ED VR		
Z f	Z6 II	Z7	· NIKKOR Z 24-70mm f/4 S · NIKKOR Z 14-30mm f/4 S			Z5	· NIKKOR Z 50mm f/2.8
Z fc	Z6 III	Z7 II	· NIKKOR Z 28mm f/2.8 · NIKKOR Z macro 50mm f/2.8	Z30	· NIKKOR Z DX 16-50mm f/3.5-6.3 VR	SIGMA 45mm f/2.8 DG DN	
Z6 III	Z7	Z50 Z fc	· NIKKOR Z 24-50mm f/4-6.3 · NIKKOR Z 85mm f/1.8 S	Z8	· NIKKOR Z DX 16-50mm f/3.5-6.3 VR		
Z50 II	Z7 II			Z f	· NIKKOR Z DX 16-50mm f/3.5-6.3 VR · NIKKOR Z 24-50mm f/4-6.3 · NIKKOR Z 85mm f/1.8 S	Z6 III	· NIKKOR Z 28-75mm f2.8
Z5 II	Z8	Z50 II	· NIKKOR Z DX 16-50mm f/3.5-6.3 VR · NIKKOR Z 24-50mm f/4-6.3 · NIKKOR Z 85mm f/1.8 S	Z6 III	· NIKKOR Z 14-24 f2.8s	BMPCC 6K BMPCC 4k	
Z30	Z50 II			Z50 II	· NIKKOR Z DX 16-50mm f/3.5-6.3 VR		Z5 II
Z fc	Z f	Z f	· NIKKOR Z DX 16-50mm f/3.5-6.3 VR · NIKKOR Z 24-50mm f/4-6.3 · NIKKOR Z 85mm f/1.8 S	Z5 II	· NIKKOR Z 24-200mm f/4-6.3 VR	BMPCC Tested Lens ✓	
Z fc	Z fc					BMPCC 6K	· CANON EF 16-35mm f2.8L II USM
Z5 II	Z5 II					BMPCC 4K	· Olympus M.ZUIKO DIGITAL ED 12-40mm f/2.8

Image: The FeiyuTech SCORP-C2 gimbal shown with various compatible accessories such as a monitor, fill light, follow focus motor, and extension rod, demonstrating its expandability.

MAINTENANCE

- Keep the gimbal clean and free from dust and debris. Use a soft, dry cloth for cleaning.
- Avoid exposing the gimbal to extreme temperatures or moisture.
- Store the gimbal in its protective case when not in use to prevent damage.
- Regularly check all screws and connections to ensure they are secure.
- Do not attempt to disassemble the gimbal, as this will void the warranty.

TROUBLESHOOTING

Problem	Possible Cause	Solution
Gimbal not powering on	Low battery; Power button not held long enough	Charge the gimbal fully; Press and hold the power button for 3 seconds
Camera shaking or unstable	Improper balancing; Payload exceeds limit	Re-balance the gimbal carefully; Ensure camera weight is within 3.5kg payload capacity
AI tracking not working	AI module disabled; Subject out of range/obscured	Enable AI tracking in settings; Ensure subject is within 18 meters and clearly visible
Camera control not responding	Cable not connected properly; Incompatible camera model	Check cable connection; Refer to compatibility list for supported cameras

PRODUCT SPECIFICATIONS

Feature	Detail
Product Name	Feiyu SCORP-C 2 Handheld Gimbal
Max Payload	Approx. 3500g (7.72 lbs)
Weight (main body)	Approx. 1320g (Not including tripod)
Max. Tilt Range	+120° ~ -200° (±3°)
Max. Roll Range	+75° ~ -245° (±3°)
Max. Pan Range	360°
Battery Life	Approx. 14 Hours (Motion State)
Battery Capacity	4500mAh
Operating Voltage	6.8V-8.4V
Product Dimensions	3.87 x 2.72 x 5.31 inches (folded size: 299.1*667*252.7mm)
AI Tracking	Built-in AI Tracking 4.0
Display	OLED Color Display

PRODUCT PARAMETERS

Product Name: Feiyu SCORP-C2 Handheld Gimbal

Max.Tilt Range: +120°~-200°(+3°)

Weight (main body): About 1320g (Not including tripod)

Max.Roll Range: +75°~-245°(+3°)

Battery life: ≦14 Hours ((Motion State))

Max.Pan Range: 360°

Operating Voltage: 6.8V-8.4V

Payload Capability: About 3500g

Battery: 4500mAh

Compatible: Sony, Canon, Nikon, Panasonic, Fujifilm, etc. (For specific camera and lens compatibility, please refer to the official website's compatibility list.)

Image: A table summarizing the key product parameters of the FeiyuTech SCORP-C2 gimbal, including tilt range, roll range, pan range, payload, battery life, and operating voltage.

CAMERA COMPATIBILITY

The FeiyuTech SCORP-C2 is compatible with a wide range of cameras from Sony, Canon, Nikon, Panasonic, and Fujifilm. For specific camera and lens compatibility, please refer to the tables below. Note that some camera brands restrict control features due to closed-source protocols, which may limit advanced controls on certain models.

Sony Camera Compatibility

SONY Camera Compatibility List / Lens Compatibility List											
Bluetooth Control	Type-C Cable Control	Model	Tested Lens ✓	Model	Tested Lens ✓	Model	Tested Lens ✓				
a6100	a6700	A1 A9 A9 II A7R A7S A7 III (A7M3) A7R III (A7R3) A7S II (A7S2) A7S III (A7S3) A7R II (A7R2) A7 II (A7M2)	<ul style="list-style-type: none"> E 10-18mm F4 OSS FE 12-24mm F4 G FE 16-35mm F2.8 GM FE16-35mm f/4 ZA OSS FE 24-70 F2.8 GM Zeiss E 16-70 F4 OSS E PZ 18-105mm F4 G OSS E PZ 18-200mm F3.5-6.3 OSS LE FE 4/24-105 G OSS FE 28-70mm f/3.5-5.6 OSS FE 28mm F2 Zeiss FE 35mm F2.8 ZA Sigma 30mm f/1.4 DC DN Sigma 35mm f1.4 DG HSM Art FE 55mm F1.8 FE 50mm F2.8 MACRO FE 85mm F1.4 GM Vario-Tessar FE 24-70mm F4 ZA OSS FE PZ 16-35mm F4 G Sigma 65mm F2 DG DN Sony FE adapter SIGMA 16mm F1.4 DC DN 	FX5	<ul style="list-style-type: none"> TAMRON 28-75mm f/2.8 Di III RXD (A036) FE2.8/24-70GM 	a5100 a6000 a6100 a6300 a6400 a6500 a6600	<ul style="list-style-type: none"> E 10-18mm F4 OSS FE 12-24mm F4 G FE 16-35mm F2.8 GM FE16-35mm f/4 ZA OSS FE 24-70 F2.8 GM Vario-Tessar FE 24-70mm F4 ZA OSS Zeiss E 16-70 F4 OSS E PZ 18-105mm F4 G OSS E PZ 18-200mm F3.5-6.3 OSS LE FE 4/24-105 G OSS FE 28-70mm f/3.5-5.6 OSS FE 28mm F2 Zeiss FE 35mm F2.8 ZA Sigma 30mm f/1.4 DC DN Sigma 35mm f1.4 DG HSM Art FE 55mm F1.8 FE 50mm F2.8 MACRO FE 85mm F1.4 GM Vario-Tessar FE 24-70mm F4 ZA OSS FE PZ 16-35mm F4 G Sigma 65mm F2 DG DN Sony FE adapter SIGMA 16mm F1.4 DC DN 				
a6400	A7C			A7 III (A7M3)	FE 28-70mm f/3.5-5.6 OSS			A7R IV (A7R4)	FE 24-105mm f/4 G OSS	a5100	Zeiss E 16-70 F4 OSS
a6700	A7C II (A7CM2)			A7R III (A7R3)	FE 28mm F2			A7R IVA (A7RM4A)	Samyang 1.5/35mm	a6000	E PZ 18-105mm F4 G OSS
ZV-1	A7CR			A7S II (A7S2)	Sigma 30mm f/1.4 DC DN			A7CII (A7CM2)	FE 4-5.6/28-60	a6100	E PZ 18-200mm F3.5-6.3 OSS LE
ZV-1M2	A7S III (A7S3)			A7S III (A7S3)	Sigma 35mm f1.4 DG HSM Art			A7C	FE 28-60mm f/4-5.6	a6300	FE 4/24-105 G OSS
A7C II (A7CM2)	A7R IV (A7R4)			A7S II (A7S2)	Sigma 35mm f1.4 DG HSM Art			A7CR	Sigma 65mm F2 DG DN	a6400	FE 28-70mm f/3.5-5.6 OSS
A7RV (A7R5)	A7RV (A7R5)			A7S III (A7S3)	FE 55mm F1.8			A7CR	Sony FE adapter	a6500	FE 28mm F2
A7S III (A7S3)	A7 IV (A7M4)			A7R II (A7R2)	FE 50mm F2.8 MACRO			A7CR	Sony FE adapter	a6600	Zeiss FE 35mm F2.8 ZA
A7C	FX3			A7 II (A7M2)	FE 85mm F1.4 GM			A7RV (A7R5)	Sigma 20mm f/1.4 DG HSM Art	a6600	Sigma 30mm f/1.4 DC DN
A7R IV (A7R4)	ZV-1M2				Vario-Tessar FE 24-70mm F4 ZA OSS						Sigma 35mm f1.4 DG HSM Art
A7 IV (A7M4)	ZV-E1				FE 24-70mm f/3.5-5.6 OSS			A9 III	FE 24-50mm F2.8 G		FE 55mm F1.8
A7S III (A7S3)	ZV-E10				Sigma 35mm f1.4 DG HSM Art			ZV-E10II	E 16-50mm F3.5-6.5 II		FE 50mm F2.8 MACRO
A7CR	ZV-E10 II				Sony FE adapter						FE 28-70mm f/3.5-5.6 OSS
A7 III (A7M3)					SIGMA 16mm F1.4 DC DN						FE 85mm F1.4 GM
ZV-E1											E 18-135mm F3.5-5.6 OSS
A7R III (A7R3)							E PZ 16-50mm f/3.5-5.6 OSS				
A9 III											
ZV-E10 II											
FX3											
RX100 VII (RX100M7)		a6700	TAMRON Di III VXD 20-40mm F/2.8	ZV-E10	<ul style="list-style-type: none"> E PZ 16-50/3.5-5.6 OSS Sigma 35mm F2 DG DN Sony FE adapter 	ZV-E1	Sigma 35mm F2 DG DN				
							Sony FE adapter				

Image: A detailed table listing compatible Sony camera models and tested lenses for the FeiyuTech SCORP-C2, indicating support for Bluetooth and Type-C cable control.

Canon Camera Compatibility

Canon Camera Compatibility List / Lens Compatibility List								
Bluetooth Control	Type-C Cable Control	Model	Tested Lens ✓	Model	Tested Lens ✓	Model	Tested Lens ✓	
EOS 200D II (250D) EOS M50 EOS R EOS R6 EOS R7 EOS R10 EOS R50 EOS R50 V EOS R5C EOS M50 Mark II EOS RP Powershot G7 X Mark III EOS M6 Mark II EOS R5 EOS M200 EOS R100 EOS R5 Mark II PowerShot V10 PowerShot V1	EOS M6 Mark II Powershot G7 X Mark III EOS RP EOS R EOS R5 EOS R6 EOS R6 Mark II EOS R7 EOS R8 EOS R10 EOS R50 EOS R50 V EOS R5C EOS R100 EOS R5 Mark II PowerShot V10	EOS R EOS RP EOS R6	· RF 35mm F1.8 MACRO IS STM · EF-S 18-200mm f/3.5-5.6 IS · EF 50mm f/1.4 DG HSM Art · EF 17-40mm f/4L USM · RF 50mm F1.2L USM · RF 28-70mm F2L USM · EF 24-105mm F4L IS USM · RF 15-35mm F2.8 L IS USM · RF50mm F1.8 STM · RF-S 18-45mm F4.5-6.3 IS STM · RF 85mm F2 MACRO IS STM · RF15-30mm F4.5-6.3 IS STM	EOS 80D EOS 6D Mark II EOS M50 EOS M50 Mark II EOS 200D II (250D) EOS 5D Mark IV	· TEF-S 18-200mm f/3.5-5.6 IS · EF 24-70mm f/4L IS USM · EF 85MM F1.2L II USM · EF-M 15-45mm F3.5-6.3 IS · EF-S18-55mm f/4-5.6 IS STM · EF 24-105mm f/4L IS USM · EF 24-70mm f/2.8L USM	EOS 6D EOS 90D EOS M6 Mark II EOS R6 Mark II	· 16-35mm f/2.8L II USM · EF-S 18-200mm f/3.5-5.6 IS · EF 24-105mm f/4L IS USM · EF-S 18-135mm f/3.5-5.6 IS USM · EF-M 15-45mm f/3.5-6.3 IS STM · RF24mm F1.8 MACRO IS STM	
			EOS 5DS R EOS 5D Mark III	· EF 24-105mm f/4L IS USM · EF 24-105 mm f/4L IS II USM · EF 24-70mm f/2.8L II USM · 16-35mm f/2.8L II USM	EOS 70D EOS 77D	· 16-35mm f/2.8L II USM · EF 24-70mm f/4L IS USM	EOS M200 EOS R100	· EF-M 15-45mm f/3.5-6.3 IS STM · CANON LENS RF-S 18-45mm F4.5-6.3 IS STM
			EOS R5 EOS R5C	· RF14-35mm F4 L IS USM · RF15-30mm F4.5-6.3 IS STM	EOS 850D EOS R8	· EF-S 18-55mm f/4-5.6 IS STM · RF24-50mm F4.5-6.3 IS STM	EOS R5 Mark II EOS R10	· CANON LENS RF 24-105mm F4 L IS USM · RF-S18-150mm F3.5-6.3 IS STM · RF35mm F1.8 MACRO IS STM · RF-S18-45mm F4.5-6.3 IS STM · RF 14-35mm f/4 L IS USM · RF 85mm F2 MACRO IS STM
			EOS R7	· RF-S18-150mm F3.5-6.3 IS STM · RF35mm F1.8 MACRO IS STM · RF-S18-45mm F4.5-6.3 IS STM · RF 14-35mm f/4 L IS USM	EOS R50 EOS R50 V	· RF-S18-45mm F4.5-6.3 IS STM · RF-S14-30mm F4-6.3 IS STM PZ		

Image: A detailed table listing compatible Canon camera models and tested lenses for the FeiyuTech SCORP-C2, indicating support for Bluetooth and Type-C cable control.

Nikon / Sigma / BMPCC Camera Compatibility

Nikon / Sigma / BMPCC Camera Compatibility List / Lens Compatibility List							
Bluetooth Control	Type-C Cable Control	Model	Tested Lens ✓	Model	Tested Lens ✓	SIGMA	Type-C Cable Control
Z30 Z50 Z f Z fc Z6 III Z50 II Z5 II	Z5 Z6 Z6 II Z6 III Z7 II Z8 Z30 Z50 II Z f Z fc Z5 II	Z6 Z6 II Z7 II Z50 Z f Z f Z f	· NIKKOR Z 35mm f/1.8 · 18-140mm f/3.5-5.6G ED VR · NIKKOR Z 50mm f/1.8 S · NIKKOR Z 24-70mm f/4 S · NIKKOR Z 14-30mm f/4 S · NIKKOR Z 28mm f/2.8 · NIKKOR Z macro 50mm f/2.8 · NIKKOR Z DX 16-50mm f/3.5-6.3 VR · NIKKOR Z 24-50mm f/4-6.3 · NIKKOR Z 85mm f/1.8 S · NIKKOR Z DX 16-50mm f/3.5-6.3 VR · NIKKOR Z 24-50mm f/4-6.3 · NIKKOR Z 85mm f/1.8 S · NIKKOR Z DX 16-50mm f/3.5-6.3 VR · NIKKOR Z 24-50mm f/4-6.3 · NIKKOR Z 85mm f/1.8 S	D7500 D850 Z5 Z30 Z8 Z6 III Z50 II Z5 II	· NIKKOR 18-140mm f/3.5-5.6 G ED VR · AF-S NIKKOR 24-120mm f/4G ED VR · NIKKOR Z 50mm f/2.8 · NIKKOR Z DX 16-50mm f/3.5-6.3 VR · NIKKOR Z 28-75mm f2.8 · NIKKOR Z 14-24 f2.8s · NIKKOR Z DX 16-50mm f/3.5-6.3 VR · NIKKOR Z 24-200mm f/4-6.3 VR	FP SIGMA SIGMA 45mm f/2.8 DG DN BMPCC Type-C Cable Control BMPCC 6K BMPCC 4k BMPCC Tested Lens ✓ BMPCC 6K BMPCC 4K CANON EF 16-35mm f2.8L II USM Olympus M.ZUIKO DIGITAL ED 12-40mm f/2.8	

Image: A detailed table listing compatible Nikon, Sigma, and Blackmagic Pocket Cinema Camera (BMPCC) models and tested lenses for the FeiyuTech SCORP-C2, indicating support for Bluetooth and Type-C cable control.

Panasonic / Fujifilm Camera Compatibility

Panasonic / Fujifilm Camera Compatibility List / Lens Compatibility List						
Panasonic	Type-C Cable Control	Panasonic	Tested Lens ✓	Fujifilm	Type-C Cable Control	WARM REMINDER
S5 S1H GH6 S5 II S9 G9 II GH5S (DC-GH5SGK-K) GH5 (DC-GH5)		GH5S (DC-GH5SGK-K) GH5 (DC-GH5) S5 GH6 S5 II S9 S1H G9 II	· LEICA DG SUMMILUX 15mm f/1.7 ASPH · LEICA DG SUMMILUX 25mm f/1.4 ASPH · LEICA DG MACRO 45mm f/2.8 OIS · LEICA DG Vario-Elmarit 8-18mm f/2.8-4.0 ASPH · LEICA DG Vario-Elmarit 12-60 f/2.8-4 Power OIS · LUMIX G X Vario 12-35mm f/2.8 II ASPH POWER OIS (H-HS12035GK I) · M.ZUIKO DIGITAL ED 12mm f/2.0 · LUMIX G 14-140mm f/4-5.6 OIS · OLYMPUS M.ZUIKO DIGITAL 12-40mm · LUMIX S 24-105mm F4	X-S10 X-T30 II Fujifilm X-S10 X-T30 II	X-S10 X-T30 II XC 15-45mm f/3.5-5.6 OIS PZ	<p>Compatibility Reminder</p> <ul style="list-style-type: none"> ● Check Before You Mount To ensure optimal performance, please confirm your camera model using our compatibility list. <p>Function Limitations</p> <ul style="list-style-type: none"> ● Some camera brands restrict third-party access to control features due to closed-source protocols. ● As a result, certain advanced controls may be limited on specific models. <p>We're Always Improving</p> <ul style="list-style-type: none"> ● FeiyuTech is committed to expanding support and unlocking more functions with ongoing firmware and compatibility updates.

Image: A detailed table listing compatible Panasonic and Fujifilm camera models and tested lenses for the FeiyuTech SCORP-C2, indicating support for Type-C cable control, along with a warm reminder about compatibility checks and function limitations.

WARRANTY AND SUPPORT

FeiyuTech products come with a standard manufacturer's warranty. For detailed warranty information, technical support, or service inquiries, please visit the official FeiyuTech website or contact their customer service. Keep your purchase receipt as proof of purchase for warranty claims.

Official Website: www.feiyu-tech.com