

Manuals+

[Q & A](#) | [Deep Search](#) | [Upload](#)

manuals.plus /

› [ORANGEMONKIE](#) /

› [ORANGEMONKIE Foldio360 Smart Dome Instruction Manual - 360 Product Photography Studio](#)

ORANGEMONKIE FOLM4000R

ORANGEMONKIE Foldio360 Smart Dome Instruction Manual

Model: FOLM4000R

[Instructions](#)

[Introduction](#)

[What's in the Box](#)

[Setup](#)

[Operating](#)

[Features](#)

[Specifications](#)

[Troubleshooting](#)

[Warranty & Support](#)

1. INTRODUCTION

The ORANGEMONKIE Foldio360 Smart Dome is an all-in-one smart lighting turntable designed for automatic 360-degree product photography and video. Its unique dome shape and integrated LED lighting system minimize shadows and reflections, providing a uniform white background for professional-quality images. This manual provides detailed instructions for setting up and operating your Foldio360 Smart Dome to achieve optimal results for jewelry, small electronics, and other small product photography needs.

2. WHAT'S IN THE BOX

Verify that all components are present before proceeding with setup.

- BLUETOOTH Module
- POWER ADAPTER
- SMART TURNTABLE
- High diffused LED Lights

3. SETUP

3.1 Unpacking and Placement

Carefully remove all components from the packaging. Place the Foldio360 Smart Dome on a stable, flat surface. Ensure adequate space around the unit for operation and camera placement.

3.2 Power Connection

Connect the provided power adapter to the Foldio360 Smart Dome and plug it into a suitable power outlet. The unit will power on automatically.

3.3 Smartphone Mount (Optional)

If using a smartphone for photography, attach the phone mount kit (not included with all models) to the designated slot on the dome stand. Secure your smartphone in the mount, ensuring it is stable and aligned with the dome's opening.

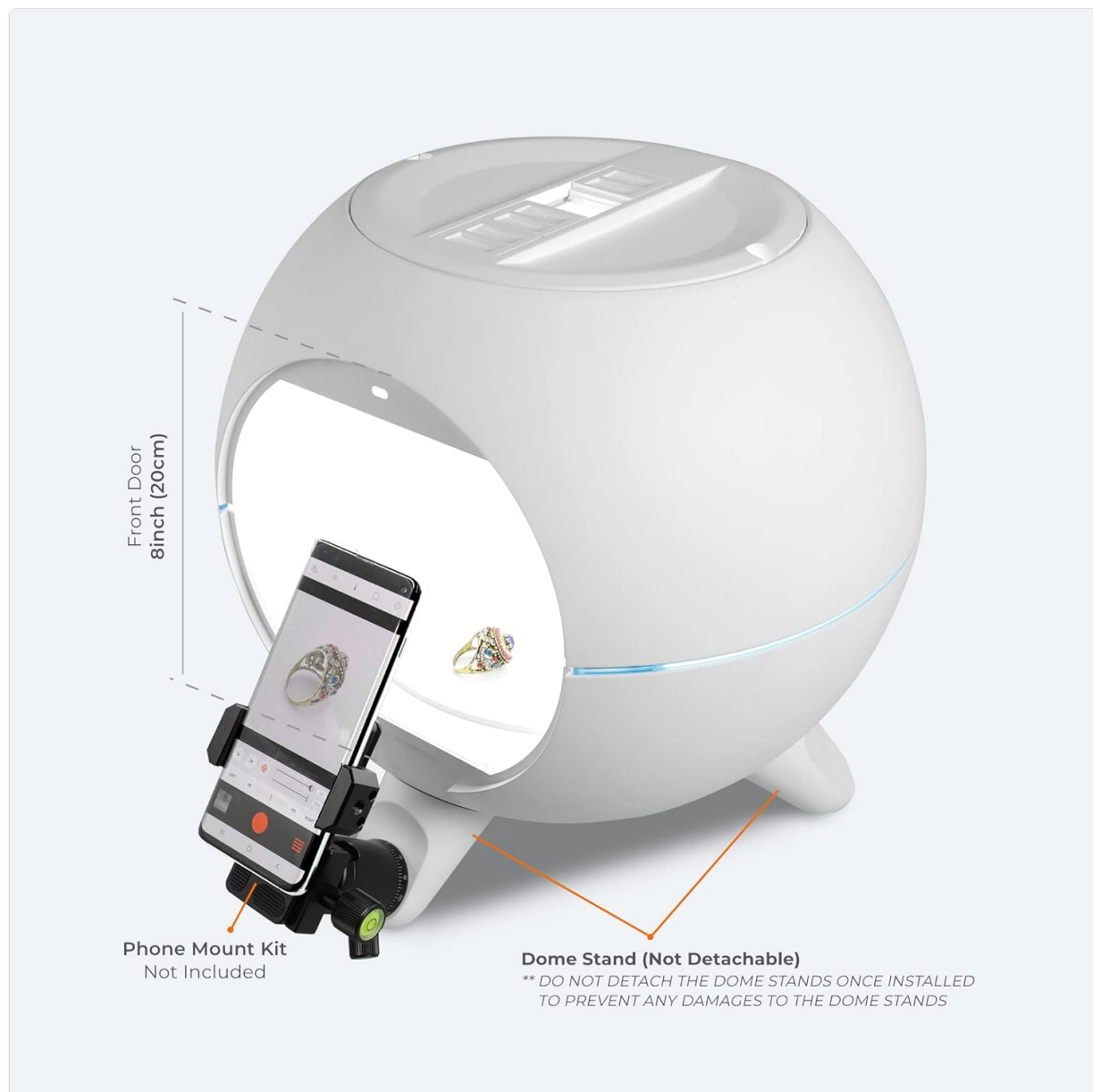


Image: The Foldio360 Smart Dome with a smartphone attached to an optional mount, illustrating the front door opening and the dome's overall structure. The phone mount kit is not included.

4. OPERATING INSTRUCTIONS

4.1 Connecting to the Foldio360 App

Download and install the official Foldio360 app on your smartphone or tablet. Enable Bluetooth on your device and open the app. The app will automatically detect and connect to your Foldio360 Smart Dome. Ensure the dome is powered on.

4.2 Placing Your Product

Open the top cover of the Smart Dome and carefully place your product on the built-in turntable. For optimal results, ensure the product is centered.

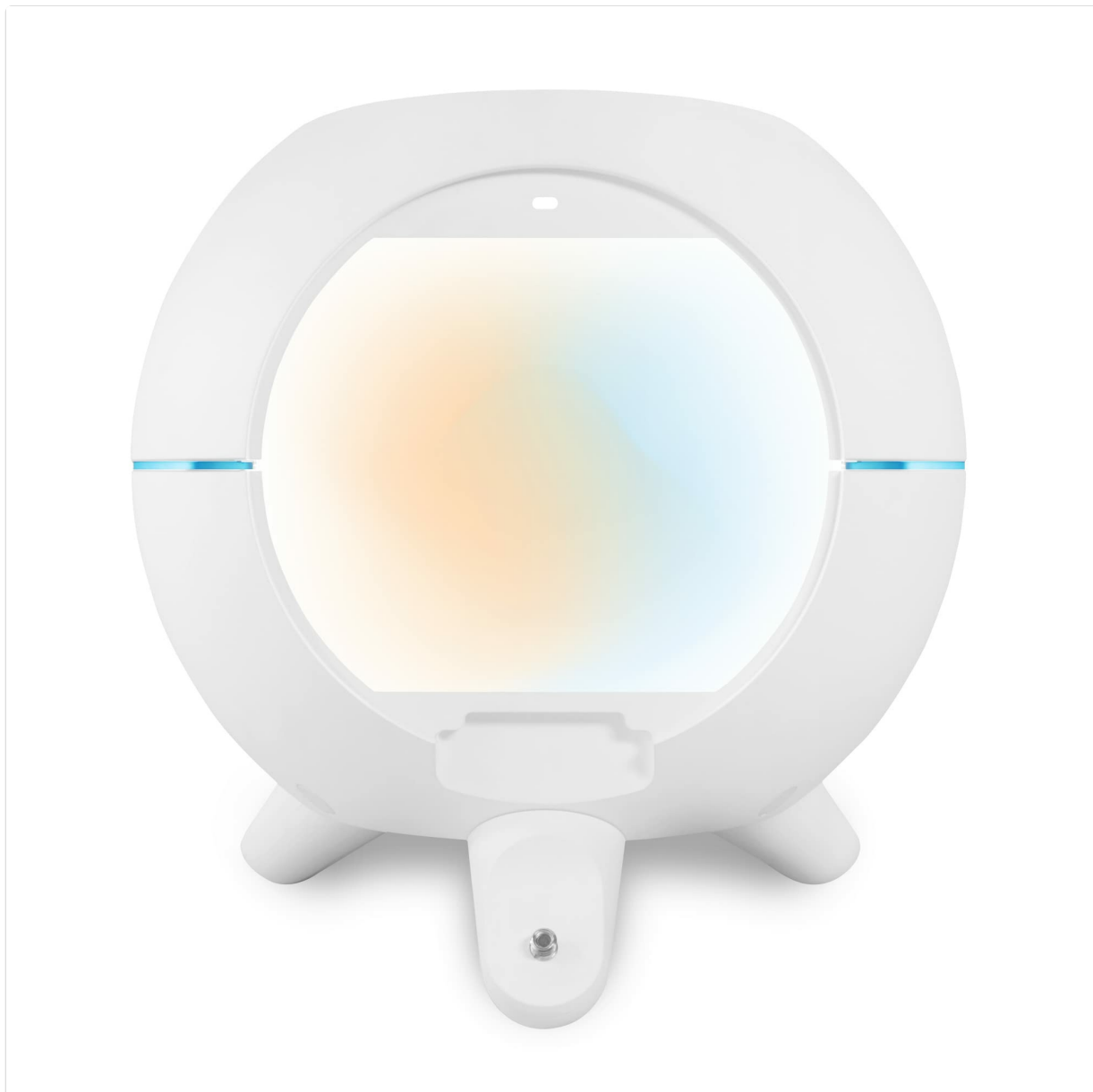


Image: The Foldio360 Smart Dome showcasing a necklace, with labels indicating its weight (6.0 lbs), color temperature options (2300K Warm, 5600K Daylight), and compatibility with DSLR and mobile devices.

4.3 Using with Smartphone App for 360 Photos

1. Open the Foldio360 app and select "PHONE 360".
2. Turn on the Center Light feature within the app to assist with product placement.
3. Adjust brightness, color temperature, and exposure settings as needed for your product.
4. Set the turntable speed (1x, 2x, 3x) and the number of frames (24, 36, 48) for the 360-degree shot.
5. Tap on the object in the app's live view to focus.
6. Click the center red button to initiate the automatic 360-degree photo capture.

Video: Demonstrates how to capture 360-degree photos using the Foldio360 Smart Dome with a smartphone and the dedicated app. It covers steps like connecting, adjusting settings, and initiating the automatic capture process.

4.4 Using with DSLR Camera for 360 Photos

1. Change your compatible DSLR's shoot mode to Remote Mode.

2. In the Foldio360 app, click on "DSLR 360".
3. Select your camera from the list and perform a connection test.
4. Adjust the speed of the turntable and the number of frames (e.g., 24, 36, 48).
5. Click the center red button in the app to shoot automatic 360-degree images.

Video: Guide on how to automatically shoot 360-degree images with a DSLR camera using the Foldio360 Smart Dome and its accompanying app. It details camera settings and app controls for seamless integration.

5. KEY FEATURES

5.1 Dome Design for Optimal Lighting

The unique dome shape of the Foldio360 Smart Dome is engineered to provide all-around lighting, effectively minimizing unwanted shadows and reflections on your product. This design ensures a clean, infinite white background for your photography.



Image: An overview of the Foldio360 Smart Dome, highlighting its all-in-one design for 360-degree product photography, including its 12-inch turntable studio, built-in smart turntable, customizable color temperature, and detachable covers to minimize reflections.

5.2 Built-in Smart Turntable

The integrated smart turntable allows for smooth, automated 360-degree rotation, controlled directly from the Foldio360 app. This feature is crucial for capturing consistent product views from every angle.

5.3 Customizable Color Temperature and Brightness

Adjust the brightness and switch between warm (2300K) and cool (5600K) color temperatures to perfectly match your product's characteristics and desired aesthetic. These settings are easily controlled via the app.



Image: A comparison of a bracelet photographed under 4300K and 5600K lighting, illustrating how different color temperatures can alter the appearance of a product.

5.4 Object Centering Lights

The dome features object centering lights that illuminate the exact center point, helping you precisely position your product for perfect 360-degree shots.



Image: A hand placing a camera lens into the Foldio360 Smart Dome, demonstrating the use of object centering lights to ensure accurate product positioning.

5.5 Detachable Magnetic Covers

The Smart Dome includes magnetic covers that can be strategically placed to block outside reflections and allow shooting from various angles (bird's eye or eye level), enhancing control over your lighting environment.

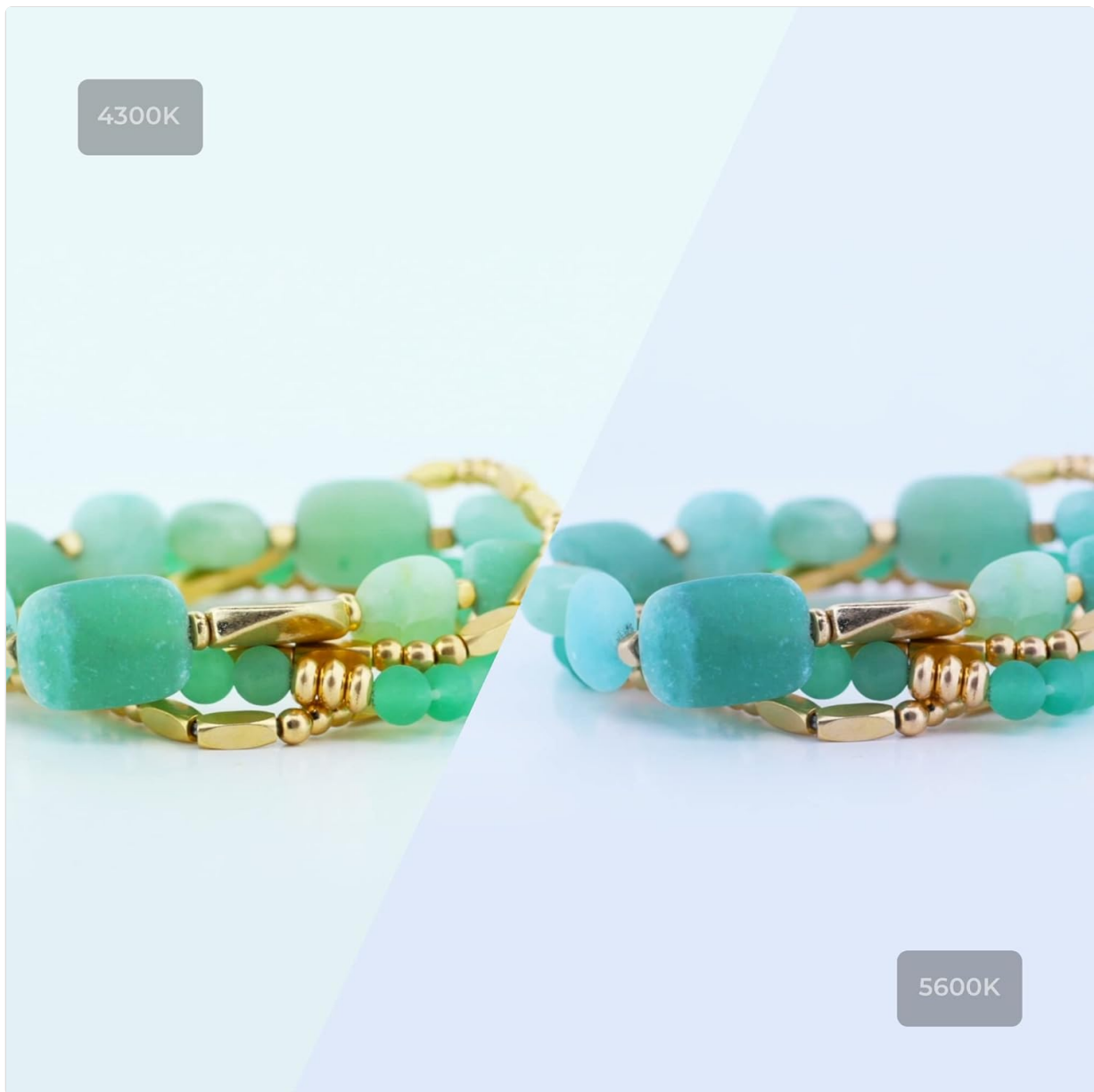


Image: A person working on jewelry with the Foldio360 Smart Dome in the background, illustrating the magnetic covers on top that can be used to hang necklaces inside the dome for photography.

6. SPECIFICATIONS

- **Product Dimensions:** 13.78 x 12.32 x 13.78 inches
- **Item Weight:** 6.17 pounds
- **ASIN:** B096SSRDMW
- **Item Model Number:** FOLM4000R
- **Color:** White
- **Brand:** ORANGEMONKIE
- **Style:** Foldio360 Smart Dome
- **Material:** Plastic
- **Light Source Type:** LED Lamp, LED

7. TROUBLESHOOTING

7.1 Connectivity Issues

If the app fails to connect to the Smart Dome, ensure Bluetooth is enabled on your device and the dome is powered on. Try restarting both the app and the Smart Dome. For DSLR connections, confirm the camera is in Remote Mode and the app has selected the correct camera.

7.2 Uneven Lighting or Reflections

Adjust the brightness and color temperature settings in the app. Utilize the detachable magnetic covers to block external light sources or reflections. Ensure your product is properly centered using the object centering lights.

7.3 Turntable Not Rotating Smoothly

Check for any obstructions on the turntable. Ensure the power adapter is securely connected. If the issue persists, try adjusting the rotation speed in the app.

8. WARRANTY & SUPPORT

For warranty information and technical support, please refer to the official ORANGEMONKIE website or contact their customer service directly. Keep your purchase receipt for warranty claims.