

## ERP AEQ72909603

# ERP AEQ72909603 Refrigerator Ice Maker Instruction Manual

## 1. INTRODUCTION

This manual provides detailed instructions for the installation, operation, and maintenance of the ERP AEQ72909603 Refrigerator Ice Maker. This component is designed to replace original ice makers in compatible refrigerators, specifically replacing part number AEQ72909601. Please read this manual thoroughly before proceeding with installation or operation to ensure proper function and safety.

## 2. SAFETY INFORMATION

- **Disconnect Power:** Always disconnect power to the refrigerator before attempting any installation, repair, or maintenance. Failure to do so can result in electric shock or injury.
- **Wear Protective Gear:** It is recommended to wear work gloves to protect your hands during installation.
- **Handle with Care:** The ice maker contains delicate components. Handle the unit carefully to avoid damage.
- **Professional Assistance:** If you are unsure about any step of the installation process, consult a qualified appliance technician.
- **Water Supply:** Ensure the refrigerator's water supply is turned off before disconnecting any water lines.

## 3. PACKAGE CONTENTS

Verify that all items are present in the package:

- ERP AEQ72909603 Refrigerator Ice Maker Unit
- Instruction Guide (this document)

## 4. SETUP AND INSTALLATION

The ERP AEQ72909603 ice maker is designed for straightforward replacement in compatible refrigerator models. While specific steps may vary by refrigerator model, the general procedure involves disconnecting the old unit and connecting the new one. Many online resources, such as video tutorials, can provide model-specific guidance.

## Pre-Installation Steps:

1. **Disconnect Power:** Unplug the refrigerator from the electrical outlet.
2. **Turn Off Water Supply:** Locate and turn off the water supply valve to the refrigerator.
3. **Access Ice Maker:** Open the freezer door and locate the existing ice maker. You may need to remove the ice bucket and any shelves or covers to gain full access.
4. **Disconnect Old Unit:** Carefully disconnect the electrical harness and any mounting screws holding the old ice maker in place. Remove the old unit.

## Installing the New Ice Maker:

1. **Position New Unit:** Align the ERP AEQ72909603 ice maker in the designated mounting location within the freezer.
2. **Secure Mounting:** Fasten the ice maker using the appropriate screws. Ensure it is securely mounted and stable.
3. **Connect Electrical Harness:** Carefully connect the electrical wiring harness to the new ice maker. Ensure the connection is firm and secure.
4. **Restore Access:** Replace any shelves, covers, or the ice bucket that were removed during the process.

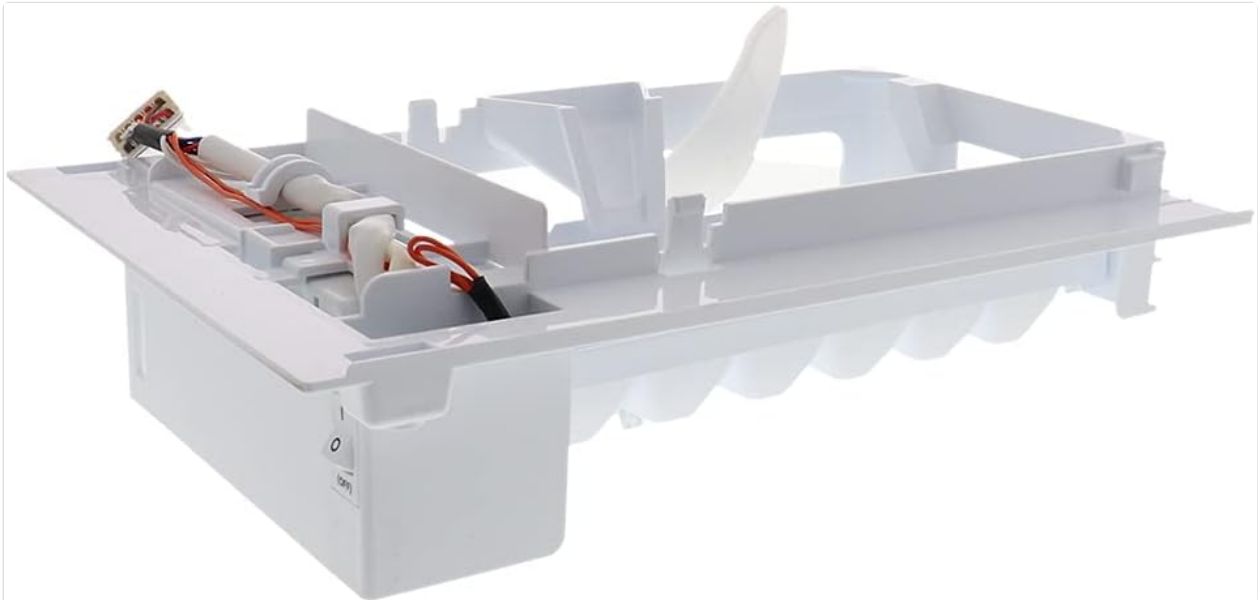


Figure 1: Overall view of the ERP AEQ72909603 Refrigerator Ice Maker.

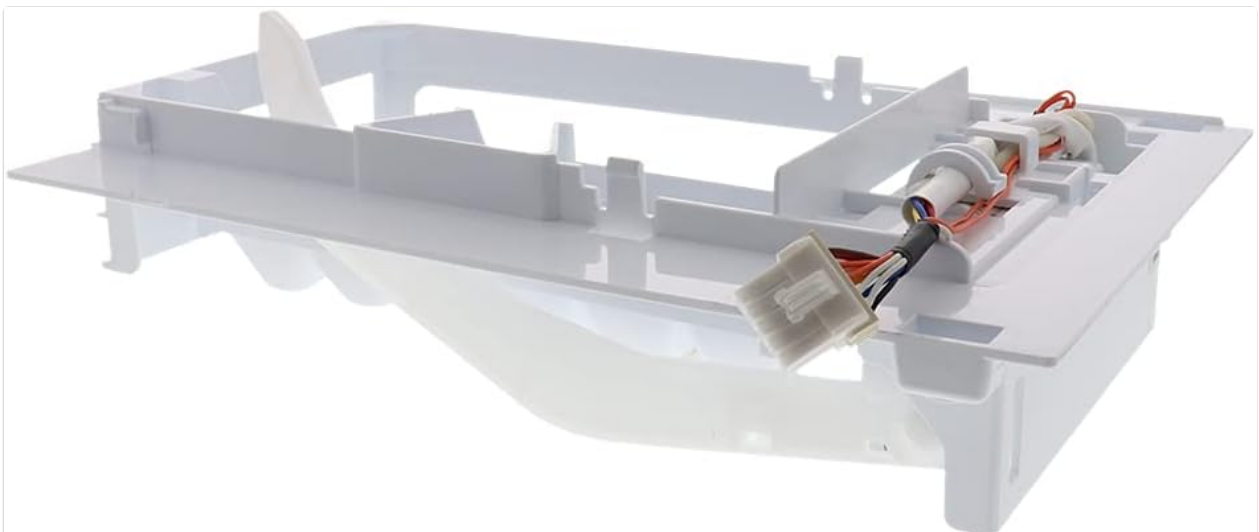


Figure 2: Side view of the ice maker, highlighting the electrical wiring harness connection point.

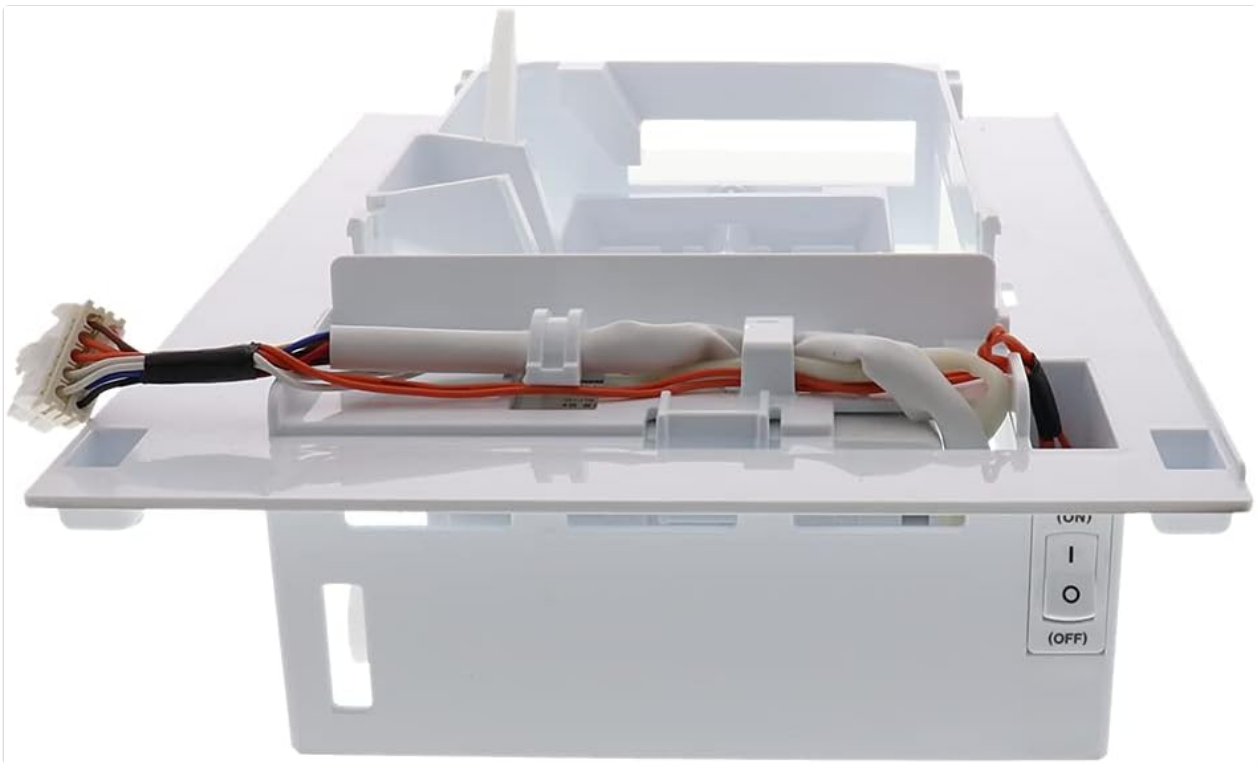


Figure 3: Side view showing the integrated ON/OFF switch for the ice maker.



Figure 4: Top view of the ice maker, showing the empty ice cube tray before operation.

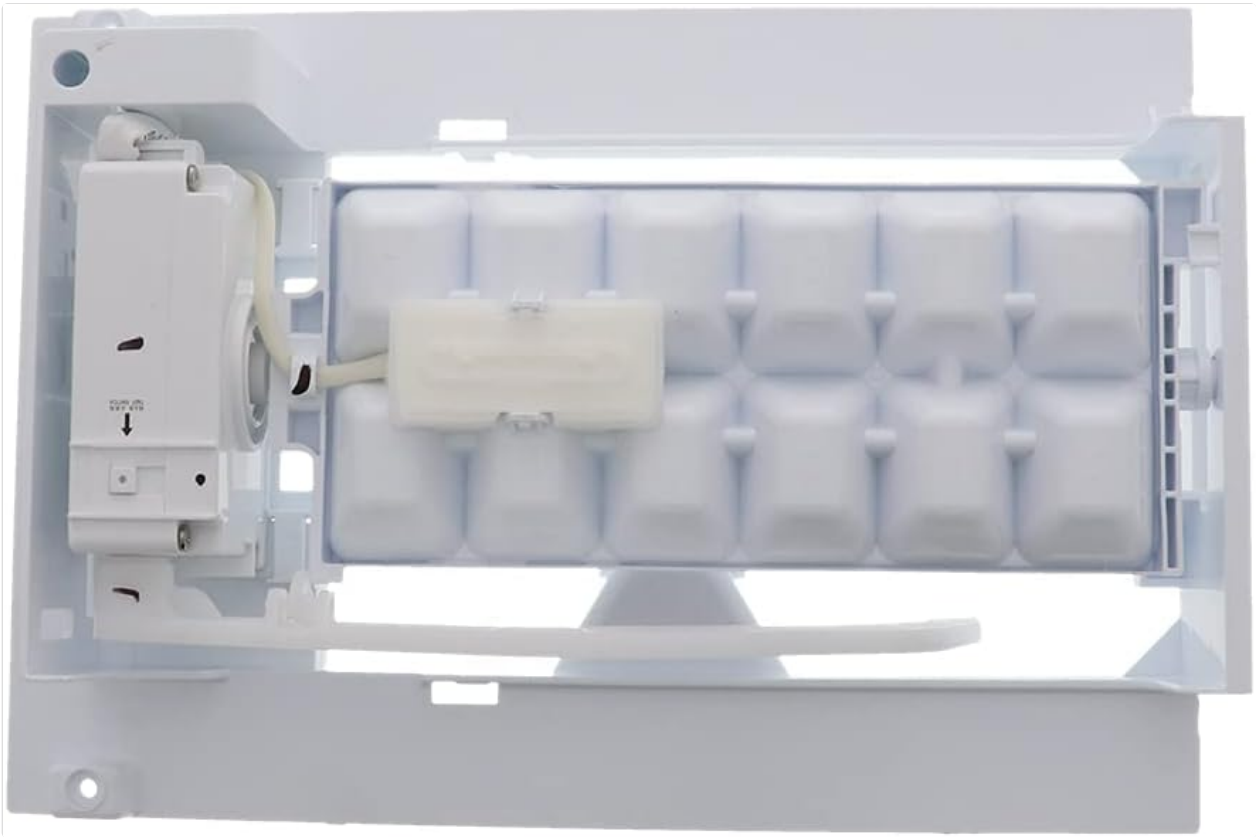


Figure 5: Top view of the ice maker, illustrating ice cubes formed within the tray during operation.

## 5. OPERATING INSTRUCTIONS

### Initial Start-up:

1. **Restore Power and Water:** Plug the refrigerator back into the electrical outlet and turn on the water supply valve.
2. **Activate Ice Maker:** Locate the ON/OFF switch on the ice maker unit (refer to Figure 3) and ensure it is in the 'ON' position.
3. **First Ice Cycle:** The ice maker will typically begin its first ice production cycle within a few hours. Discard the first few batches of ice to flush out any air or impurities from the water line.

### Normal Operation:

The ice maker will automatically produce ice as needed, sensing the ice level in the ice bucket. When the ice bucket is full, the ice maker will temporarily stop production until ice is removed.

## 6. MAINTENANCE

- **Cleaning:** Periodically clean the ice maker and ice bucket with a mild soap and water solution. Rinse thoroughly and dry completely before reinstallation. Do not use abrasive cleaners or harsh chemicals.
- **Inspection:** Regularly inspect the water line for any kinks, leaks, or damage. Ensure the electrical connections remain secure.
- **Filter Replacement:** If your refrigerator has a water filter, ensure it is replaced according to the refrigerator manufacturer's recommendations to maintain optimal ice quality and production.

## 7. TROUBLESHOOTING

If your ice maker is not functioning correctly, perform the following basic checks:

- **No Ice Production:**
  - Ensure the refrigerator is plugged in and receiving power.
  - Verify the ice maker's ON/OFF switch is in the 'ON' position.
  - Check that the water supply valve to the refrigerator is open.
  - Inspect the water line for kinks or blockages.
  - Ensure the ice bucket is properly seated and not preventing the ice maker from cycling.
  - Allow sufficient time (several hours) for the freezer to reach the correct temperature and for the first ice cycle to complete.
- **Slow Ice Production:**
  - Check the freezer temperature; it should be set to 0°F (-18°C) or colder for optimal ice production.
  - Ensure the water filter (if applicable) is not clogged and has been replaced recently.
- **Unusual Noises:**
  - Minor noises during ice ejection are normal.
  - If loud or persistent noises occur, disconnect power and inspect the unit for any obstructions or loose parts.

If these steps do not resolve the issue, contact customer support or a qualified technician.

8. SPECIFICATIONS

Feature	Specification
Brand	ERP
Model Name	AEQ72909603
Product Dimensions	12"D x 8.25"W x 3"H
Voltage	12 Volts (DC)
Material	Plastic
Item Weight	1.5 pounds
Replaces Part Number	AEQ72909601

9. WARRANTY INFORMATION

The ERP AEQ72909603 Refrigerator Ice Maker comes with a **one-year warranty** from the date of purchase. This warranty covers defects in materials and workmanship under normal use. For warranty claims or further details, please refer to the ERP official website or contact their customer service.

10. SUPPORT

For additional assistance, technical support, or to inquire about replacement parts, please visit the ERP official website or contact their customer service department. When contacting support, please have your product

model number (AEQ72909603) and purchase information readily available.