

ViewSonic PX748-4K

ViewSonic PX748-4K UHD 4K Projector User Manual

MODEL: PX748-4K

Brand: ViewSonic

INTRODUCTION

This user manual provides comprehensive instructions for the setup, operation, maintenance, and troubleshooting of your ViewSonic PX748-4K UHD 4K Projector. Please read this manual thoroughly before using the projector to ensure proper operation and to maximize its performance and lifespan.

The ViewSonic PX748-4K projector delivers stunning home entertainment with incredible Ultra HD resolution, HDR/HLG support, and a high brightness of 4,000 ANSI lumens. It features an ultra-low 4.2ms input lag and 240Hz refresh rate for gaming, along with flexible connectivity options including USB-C. Its design allows for flexible mounting and easy installation with features like 1.3x optical zoom, warping capabilities, and H/V keystoneing.

SETUP

1. What's in the Box

Verify that all components are present in the packaging:

- ViewSonic PX748-4K Projector
- Power Cord
- USB Type-C Cable
- Remote Control
- QuickStart Guide (User Manual PDF available online)

What's in the box.



PX748-4K Projector

*Power Cable varies by region

Image: Contents of the ViewSonic PX748-4K projector box, showing the projector, power cable, USB-C cable, and remote control.

2. Physical Placement and Dimensions

The projector can be placed on a table or ceiling-mounted. Consider the throw distance and screen size for optimal viewing.

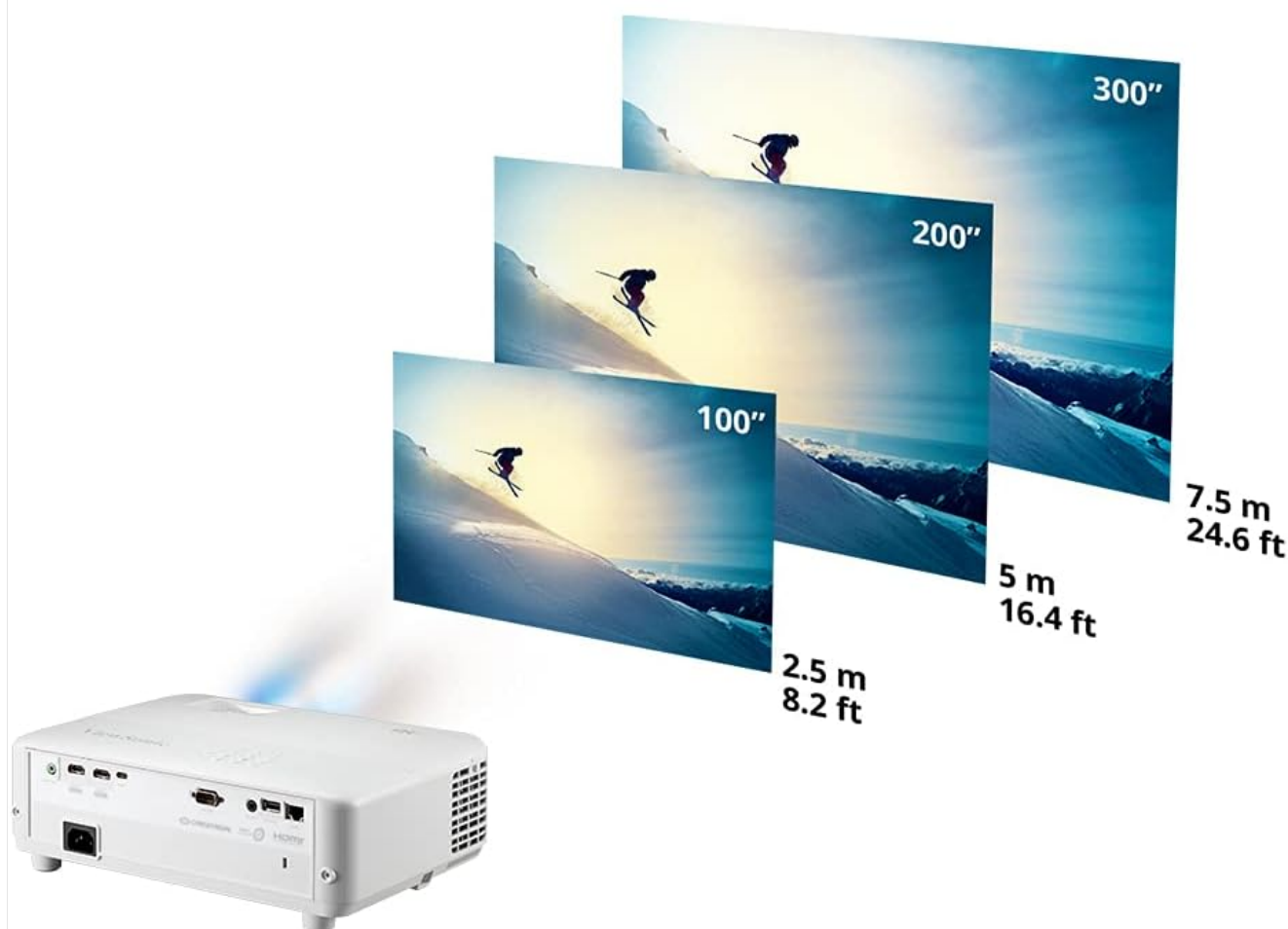
- **Product Dimensions:** 4.3 x 12.2 x 8.7 inches (10.8 x 31.2 x 22.2 cm)
- **Item Weight:** 2.8 pounds



Image: Physical dimensions of the ViewSonic PX748-4K projector, indicating its length, width, and height.

The projector supports screen sizes up to 300 inches (762 cm) diagonal. The 1.3x optical zoom and H/V keystone correction features allow for flexible installation and image adjustment.

Go Big Even in Small Spaces



*Project screen sizes up to 300"

Image: Illustration of different projection screen sizes (100", 200", 300") and the required throw distances in meters and feet for the ViewSonic PX748-4K projector.



Image: A visual representation of the projector's 1.3x optical zoom feature, demonstrating how it allows for flexible installation and image sizing without moving the projector.

3. Connectivity

The PX748-4K offers a variety of input and output ports for connecting your devices:

- **HDMI:** 2 ports for connecting media players, gaming consoles, PCs, and Macs.
- **USB Type-C:** For direct streaming from compatible devices like the Nintendo Switch.
- **USB 2.0 Type-A:** For power or connecting USB devices.
- **RJ45 (Ethernet LAN):** For network control and management.
- **Audio Out:** 3.5mm jack for external audio systems.
- **RS232 In:** For serial control.
- **12V Trigger:** For synchronized control of external devices like motorized screens.

Flexible connectivity for your favorite devices.



Image: The rear panel of the ViewSonic PX748-4K projector, detailing its flexible connectivity options including HDMI, USB-C, USB-A, Ethernet, Audio Out, RS232, and 12V Trigger ports.

OPERATING INSTRUCTIONS

1. Power On/Off

Press the power button on the projector or the remote control to turn the unit on or off. Allow a few moments for the projector to warm up or cool down.

2. Input Source Selection

Use the "Source" button on the remote control or projector panel to cycle through available input sources (HDMI 1, HDMI 2, USB-C, etc.).

3. Picture Settings and Quality

The PX748-4K delivers a high-quality visual experience with several advanced features:

- **4K UHD Resolution:** Enjoy incredibly detailed and sharp images.
- **4000 ANSI Lumens:** Provides high brightness for clear viewing even in well-lit rooms.
- **HDR/HLG Support:** Decodes HDR video signals for enhanced contrast and color detail.
- **SuperColor Technology:** ViewSonic's proprietary technology for a wider color gamut and vibrant, true-to-life colors.



TRUE 4K PROJECTOR
With HDR/HLG Content Support

Image: A vibrant projection demonstrating the True 4K resolution with HDR/HLG content support, showcasing enhanced color and contrast.



Image: A bright projected image in a room, illustrating the 4,000 ANSI lumens for stunning clarity in various lighting conditions.

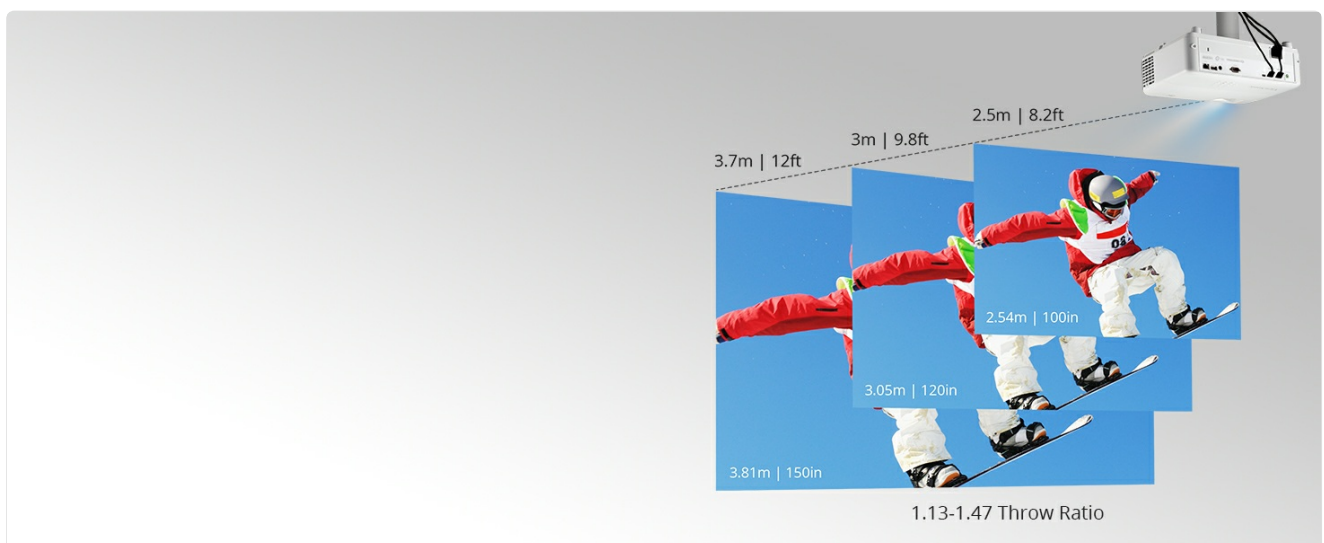


Image: A simulated comparison illustrating the visual difference between content without 4K HDR and with 4K HDR, highlighting the richer details and expanded color range.

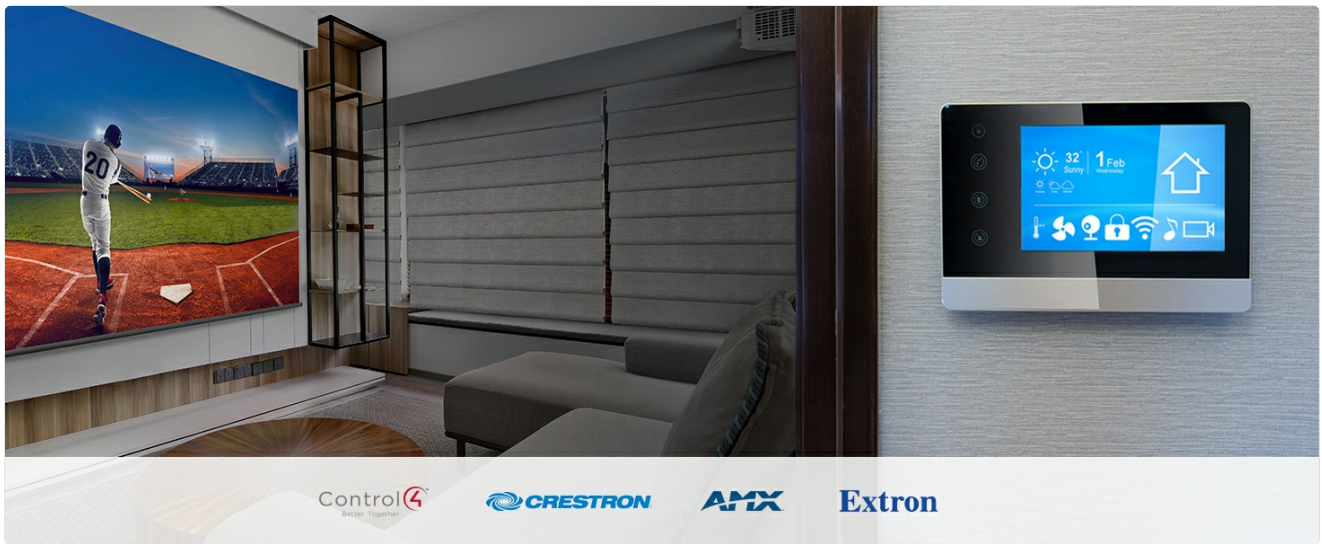


Image: A simulated comparison demonstrating the visual improvement from normal color to SuperColor Technology, showing more vibrant and accurate hues.

4. Gaming Features

For an immersive gaming experience, the PX748-4K offers:

- **4.2ms Input Lag:** Ultra-low input lag ensures responsive gameplay.
- **240Hz Refresh Rate:** Provides incredibly smooth motion for fast-paced games (at 1080p resolution).



SEAMLESS GAMEPLAY

Ultra-fast 4.2ms input with 240Hz refresh

Image: A gamer's hands holding a controller, with a large projected screen displaying a fast-paced game, illustrating the seamless gameplay experience provided by the projector's low input lag and high refresh rate.

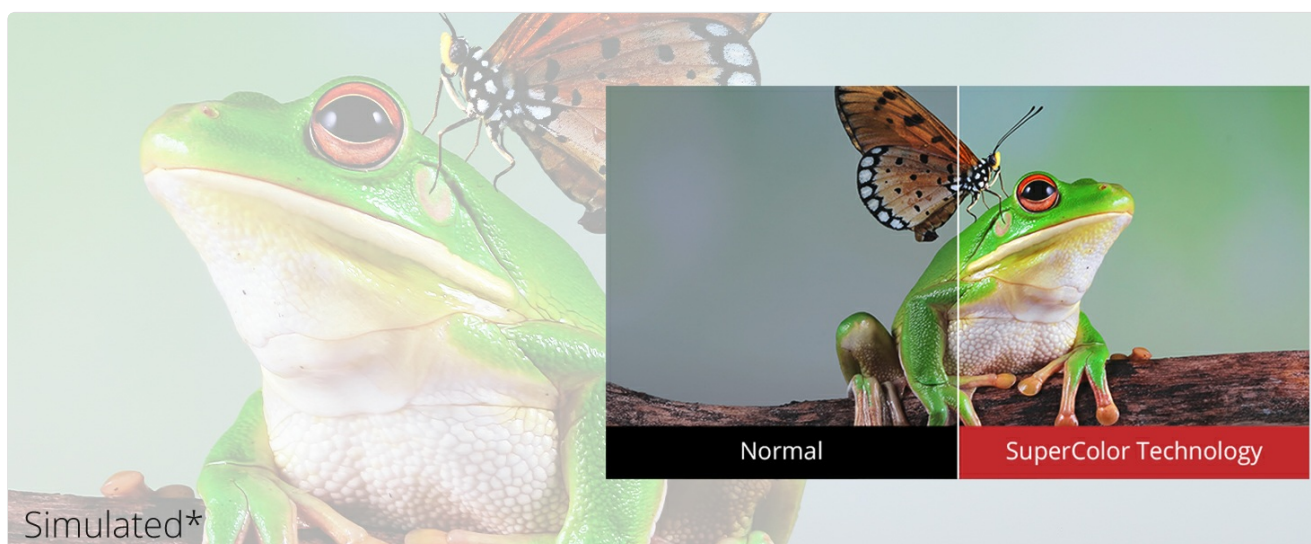


Image: A simulated comparison demonstrating the effect of 4.2ms ultra-fast input and 240Hz refresh rate on fast-moving content, showing significantly smoother motion compared to without these features.

5. Smart Home Integration

The projector is compatible with LAN control systems (Crestron, AMX, Control4, Extron) and features a 12V trigger for integration into smart home setups.



Image: A smart home control interface displayed next to a projected image, illustrating the projector's compatibility with smart home systems like Control4, Crestron, AMX, and Extron for integrated control.

MAINTENANCE

1. Cleaning the Projector

- **Casing:** Use a soft, dry cloth to wipe the projector casing. For stubborn stains, dampen the cloth slightly with a mild, non-abrasive cleaner.
- **Lens:** Gently clean the projector lens with a lens cleaning cloth or lens paper. Avoid using abrasive materials or excessive pressure, which can scratch the lens.
- **Air Vents:** Periodically check and clean the air vents to ensure proper airflow and prevent overheating. Use a soft brush or compressed air to remove dust.

2. Lamp Life and Replacement

The PX748-4K utilizes a projection lamp that has a finite lifespan. Lamp life can vary based on usage and operating mode (e.g., Eco mode extends lamp life). When the lamp reaches the end of its life, the image may dim significantly or the projector may cease to function.

If a lamp replacement is necessary, please contact ViewSonic support or an authorized service center for guidance on obtaining and installing a genuine replacement lamp. Using non-genuine lamps may void your warranty and could affect projector performance or safety.

TROUBLESHOOTING

Common Issues and Solutions:

| Problem | Possible Cause | Solution |
|---------|----------------|----------|
|---------|----------------|----------|

| Problem | Possible Cause | Solution |
|--------------------------------------|--|---|
| No image on screen | Power cable disconnected Input source not selected Source device not powered on or connected | Ensure power cable is securely connected. Select the correct input source using the remote or projector buttons. Check power and connections of the source device (e.g., laptop, Blu-ray player). |
| Image is blurry or out of focus | Focus ring not adjusted Projector too close/far from screen | Adjust the focus ring on the projector lens until the image is sharp. Adjust the projector's distance from the screen or use the optical zoom. |
| Image is distorted (trapezoid shape) | Projector not perpendicular to screen | Use the H/V keystone correction feature in the projector menu to square the image. Reposition the projector to be as perpendicular as possible to the screen. |
| No sound | Volume too low or muted Audio cables not connected External audio system not configured | Increase volume or unmute using the remote. Ensure audio cables (if used) are properly connected. If using an external audio system, ensure it is powered on and correctly configured. |
| Projector overheats or shuts down | Blocked air vents Insufficient ventilation | Ensure air vents are clear of obstructions. Place the projector in a well-ventilated area, away from walls or other objects that might block airflow. |

SPECIFICATIONS

| Feature | Detail |
|-------------------------|-------------------------------------|
| Product Dimensions | 4.3 x 12.2 x 8.7 inches |
| Item Weight | 2.8 pounds |
| Item Model Number | PX748-4K |
| Batteries Required | 2 AAA batteries (for remote) |
| Manufacturer | ViewSonic |
| Recommended Uses | Gaming, Home Theater |
| Special Feature | Built-In 3D |
| Connectivity Technology | Ethernet, HDMI, USB, USB 2.0 Type A |

| Feature | Detail |
|---------------------|----------------------|
| Display Resolution | 3840 x 2160 (4K UHD) |
| Brightness | 4000 ANSI Lumens |
| Input Lag | 4.2ms |
| Refresh Rate | 240Hz (at 1080p) |
| Optical Zoom | 1.3x |
| Max Screen Diagonal | 300 inches / 762 cm |

WARRANTY AND SUPPORT


For detailed warranty information, please refer to the warranty card included with your product or visit the official ViewSonic website.

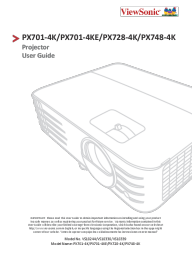

For further assistance, technical support, or to download the full user manual in PDF format, please visit:

- **User Manual (PDF):** [Download PDF Manual](#)
- **ViewSonic Store:** [Visit ViewSonic Official Store on Amazon](#)

© 2025 ViewSonic Corporation. All rights reserved.

Related Documents - PX748-4K

| | |
|--|--|
|  ViewSonic M2e Discover the ViewSonic M2e, a portable smart LED projector offering Full HD resolution, 125% Rec.709 color accuracy, and integrated Harman Kardon speakers. Learn about its key features, product description, and technical specifications for easy setup and cinema-quality entertainment anywhere. | <p>ViewSonic M2e Portable Smart LED Projector - Features and Specifications</p> <p>Discover the ViewSonic M2e, a portable smart LED projector offering Full HD resolution, 125% Rec.709 color accuracy, and integrated Harman Kardon speakers. Learn about its key features, product description, and technical specifications for easy setup and cinema-quality entertainment anywhere.</p> |
|--|--|

| | |
|---|---|
|  <p>ViewSonic PX701-4K/PX701-4KE/PX728-4K/PX748-4K Projector Back Covering</p> | <p>ViewSonic Projector PX701-4K Series User Manual</p> <p>User manual for ViewSonic PX701-4K, PX701-4KE, PX728-4K, and PX748-4K projectors, covering setup, operation, features, and troubleshooting.</p> |
|  <p>ViewSonic PX701-4K/PX701-4KE/PX728-4K/PX748-4K Projector User Guide</p> | <p>ViewSonic PX701-4K Series Projector User Guide</p> <p>User guide for ViewSonic PX701-4K, PX701-4KE, PX728-4K, and PX748-4K projectors. Covers setup, operation, safety, menu functions, troubleshooting, and maintenance.</p> |
|  <p>ViewSonic PX701-4K/PX701-4KE/PX728-4K/PX748-4K 投影机 使用指南</p> | <p>ViewSonic PX701-4K/PX701-4KE/PX728-4K/PX748-4K</p> <p>ViewSonic PX701-4K PX701-4KE PX728-4K PX748-4K ViewSonic</p> |
|  <p>Service Manual ViewSonic PX748-4K Model No. V518339 DLP Projector</p> | <p>ViewSonic PX748-4K Service Manual - Technical Guide</p> <p>Comprehensive service manual for the ViewSonic PX748-4K DLP projector, covering maintenance, specifications, disassembly, troubleshooting, and parts.</p> |
|  <p>M2 Lamp Free Smart Theater User Guide</p> | <p>ViewSonic M2 Lamp Free Smart Theater User Guide</p> <p>This user guide provides comprehensive information on the ViewSonic M2 Lamp Free Smart Theater projector, covering setup, operation, features, and troubleshooting. Learn about its short-throw lens, auto keystone correction, Bluetooth connectivity, USB-C capabilities, and more.</p> |