

CPVAN BC01

CPVAN Wireless Security Camera Outdoor - Instruction Manual

Model: BC01 | Brand: CPVAN

1. INTRODUCTION

This manual provides comprehensive instructions for the setup, operation, and maintenance of your CPVAN Wireless Security Camera (Model BC01). Please read this guide thoroughly before using the product to ensure optimal performance and safety.



Figure 1: CPVAN Wireless Security Camera (Model BC01)

2. PRODUCT FEATURES

- **1080P HD Video:** Captures clear 1080P HD video and images with a 120-degree wide-angle view.
- **AI Recognition & Smart Motion Detection:** Accurately analyzes and recognizes people, vehicles, pets, and packages, sending instant notifications.
- **Color Night Vision:** Integrated white and infrared light sources provide full-color and infrared night vision up to 33 ft.
- **2-Way Audio:** Built-in microphone and speaker for real-time two-way communication.
- **Siren Alarm & Spotlight:** Deter unwanted visitors with an audible siren and flashing white light.
- **Wire-Free & Waterproof:** Rechargeable battery for 1-5 months of use on a single charge and IP65 waterproof rating for outdoor installation.
- **Storage Options:** Supports up to 128GB SD card and free 3-day rolling cloud storage.

3. WHAT'S IN THE BOX

Verify that all components are present in the package:

- CPVAN Wireless Security Camera (BC01)
- Mounting Bracket
- USB Charging Cable
- Mounting Screws and Wall Anchors
- User Manual

4. SETUP GUIDE

4.1 Initial Charging

Before first use, fully charge the camera. Connect the provided USB cable to the camera's charging port and a compatible USB power adapter (not included). The indicator light will be yellow during charging and turn green when fully charged. A full charge may take 8-10 hours.

3 Days Free Cloud

MicroSD Card Not Included

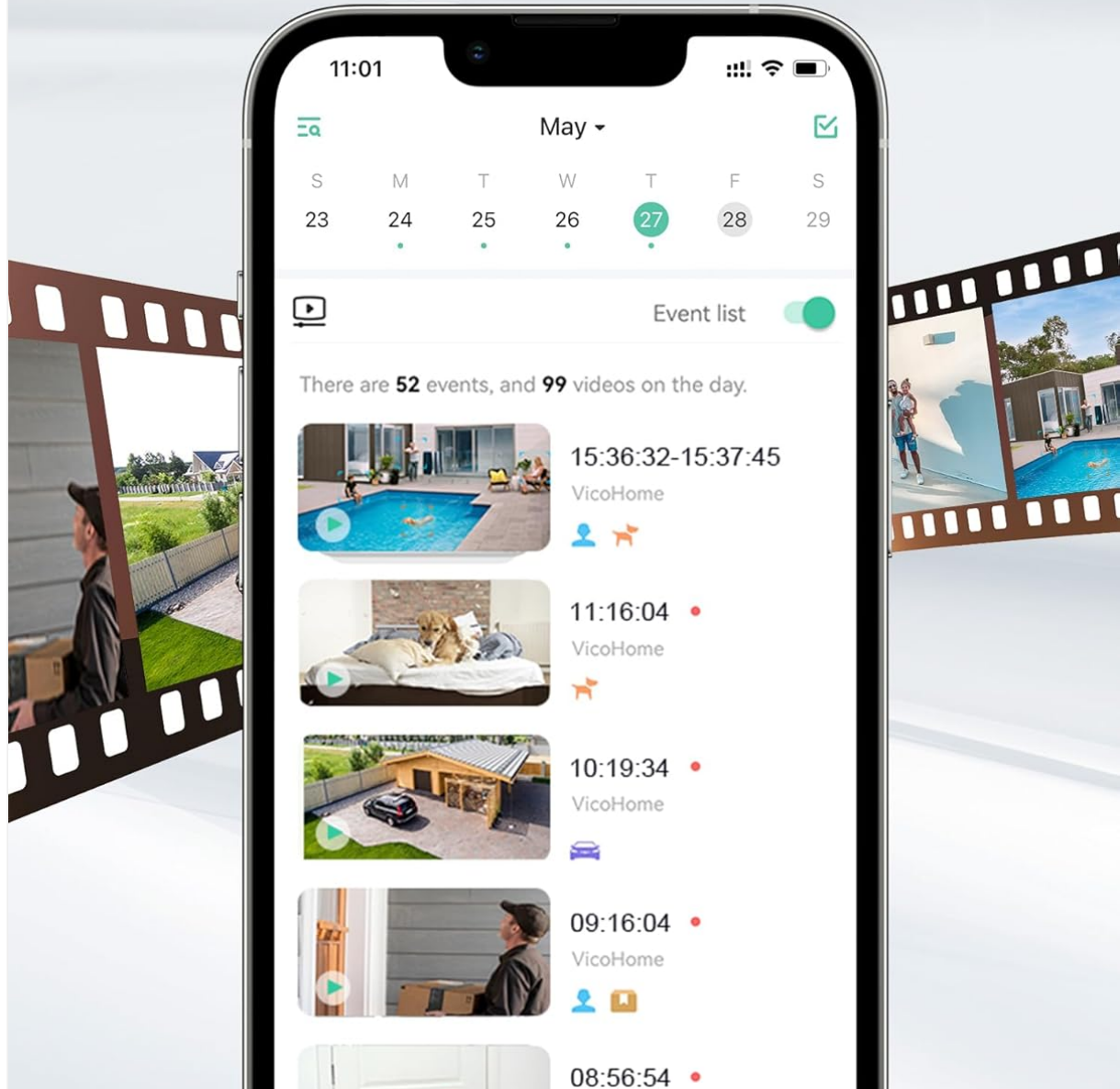


Figure 2: Camera charging port and indicator light. The yellow light indicates charging, green indicates fully charged.

4.2 App Installation & Account Creation

1. Download the 'VicoHome' app from your smartphone's App Store (iOS) or Google Play Store (Android).
2. Open the VicoHome app and create a new account using your email address. Follow the on-screen prompts to set up your account details and password.
3. Verify your account using the confirmation code sent to your registered email.

4.3 Camera Pairing & Wi-Fi Connection

1. In the VicoHome app, select 'Add a new camera' or the '+' icon to begin the pairing process.
2. Turn on the camera by long-pressing the power button for 3 seconds. The camera will emit voice prompts and its indicator light will flash.
3. Confirm in the app that the camera is emitting a beeping sound.

4. Input your 2.4GHz Wi-Fi network password when prompted by the app. Ensure your Wi-Fi signal is strong in the camera's intended location.
5. The app will display a QR code. Position the camera to scan this QR code from your phone screen. Hold the camera about 4-12 inches from the phone.
6. Once the camera successfully scans the QR code, it will emit a voice prompt indicating connection. The app will then show 'Connection succeeded'.
7. Name your camera and set its location within the app (e.g., 'Front Door', 'Garden').

Video 1: This video demonstrates the step-by-step process of connecting the CPVAN Wireless Security Camera to the VicoHome app, including account creation, camera power-on, and scanning the QR code for Wi-Fi pairing.

4.4 Mounting the Camera

The camera can be installed indoors or outdoors. Choose a location with a clear view and strong Wi-Fi signal.

1. Secure the mounting bracket to the desired surface using the provided screws and wall anchors.
2. Attach the camera to the mounting bracket and adjust its angle for optimal coverage.



Figure 3: Illustration of easy camera installation on an outdoor wall.

5. OPERATING INSTRUCTIONS

5.1 Live View & Playback

Access the VicoHome app to view live footage from your camera at any time. You can also review recorded events stored on the SD card or cloud.

3 Days Free Cloud

MicroSD Card Not Included

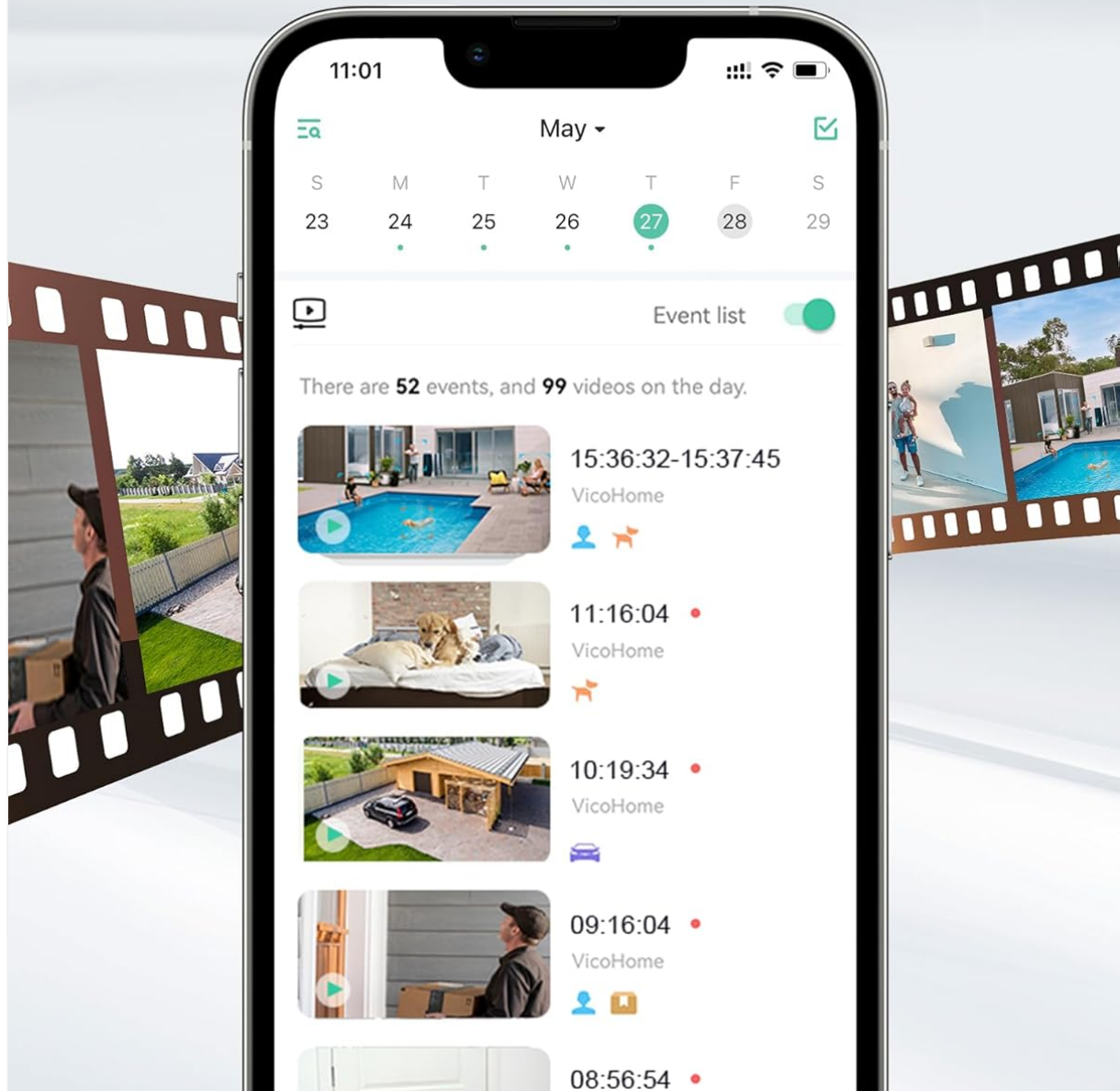


Figure 4: VicoHome app interface displaying recorded events and cloud storage options.

5.2 Motion Detection & AI Recognition

The camera uses PIR motion detection and AI recognition to identify specific objects and send alerts.

- **PIR Sensor:** Detects heat signatures for accurate motion detection.
- **AI Recognition:** Distinguishes between people, vehicles, pets, and packages to reduce false alarms.

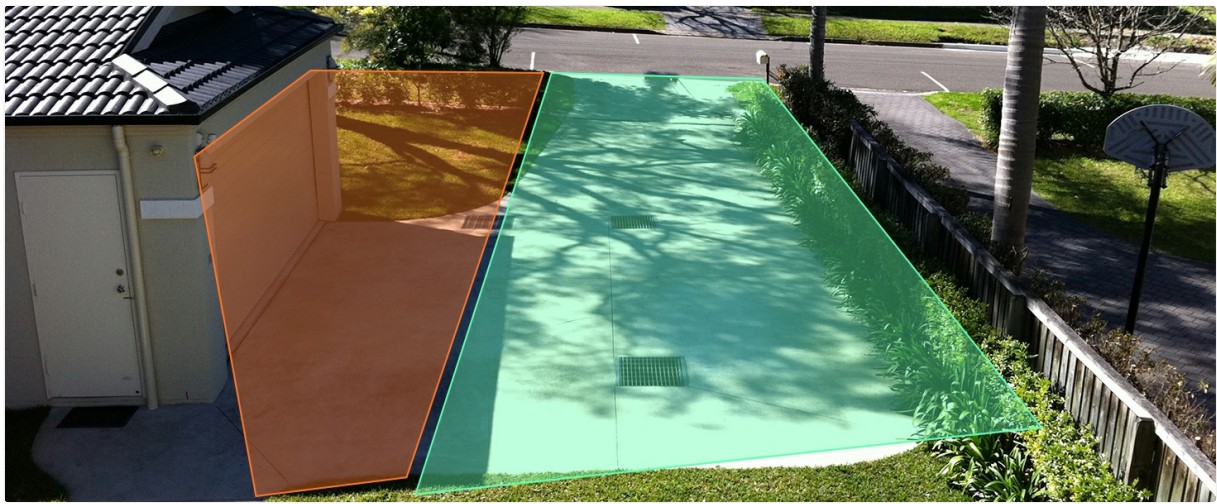


Figure 5: AI recognition actively identifying a person and a pet within the camera's view.

5.3 Activity Zones

Define specific areas within the camera's view for motion detection. This helps in focusing on critical areas and minimizing unwanted notifications.

Video 2: This video illustrates how to set up custom activity zones within the VicoHome app, allowing users to define specific areas for motion detection and alerts.

5.4 Night Vision Modes

The camera offers two night vision modes:

- **Infrared Mode:** Provides clear black-and-white footage in low-light conditions.
- **Full-Color Mode:** Utilizes the built-in spotlight to capture color video at night.



Figure 6: Comparison of day, white light (color night vision), and infrared night vision modes.

Video 3: This video showcases the camera's night vision capabilities, demonstrating its ability to capture clear footage in low-light conditions.

5.5 2-Way Audio & Siren Alarm

Use the 2-way audio feature to communicate with visitors or deter intruders. Activate the siren alarm directly from the app for added security.



Figure 7: Two-way audio communication feature in use.

PIR Motion Detection

Spotlight & Siren Alarm



Figure 8: The camera's spotlight and siren alarm activating upon detecting an intruder.

6. MAINTENANCE

6.1 Battery Management

The camera is powered by a rechargeable lithium-ion battery, offering 1 to 5 months of usage depending on activity. Monitor battery levels via the VicoHome app and recharge as needed using the provided USB cable.



Figure 9: The camera can be paired with an optional solar panel for continuous charging.

6.2 Weather Resistance

With an IP65 waterproof rating, the camera is designed to withstand various weather conditions, including rain, snow, and extreme temperatures.

Withstand Heat, Cold, Rain

All year round working



IP65 Waterproof

Figure 10: The camera's IP65 rating ensures durability in various weather conditions.

6.3 Cleaning

Periodically clean the camera lens and body with a soft, damp cloth to ensure clear image quality. Avoid using harsh chemicals.

7. TROUBLESHOOTING

- **Camera not connecting to Wi-Fi:** Ensure the camera is within range of your 2.4GHz Wi-Fi network. Verify the Wi-Fi password entered in the app is correct.
- **Poor image quality:** Check if the camera lens is clean and free from obstructions. Ensure adequate lighting, especially at night.
- **Battery draining quickly:** Reduce the sensitivity of motion detection or the frequency of recordings. Ensure the

camera is fully charged.

- **No motion detection alerts:** Verify that motion detection is enabled in the app settings and that activity zones are correctly configured.
- **App issues:** Ensure your VicoHome app is updated to the latest version. Restart the app or your smartphone if issues persist.



8. SPECIFICATIONS



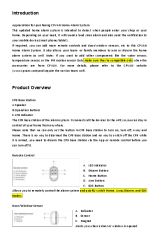

Feature	Detail
Model Number	BC01
Video Capture Resolution	1080p
Effective Video Resolution	1080 Pixels
Effective Still Resolution	16 MP
Connectivity Technology	Wireless (Wi-Fi)
Power Source	Battery Powered (1 Lithium Ion battery included)
Indoor/Outdoor Usage	Indoor, Outdoor
Water Resistance Level	Waterproof (IP65)
Night Vision Range	33 Feet
Special Features	Motion Sensor, Night Vision, 2-Way Audio, AI Recognition, Siren Alarm, Spotlight
Storage	SD Card (up to 128GB), Cloud Storage
Item Dimensions (L x W x H)	2.64 x 2.28 x 3.5 inches
Item Weight	7 ounces (0.2 Kilograms)
Control Method	App (VicoHome)

9. WARRANTY AND SUPPORT

For warranty information and technical support, please refer to the documentation included with your product or visit the official CPVAN website. If you encounter any issues not covered in this manual, please contact CPVAN customer service for assistance.

Related Documents - BC01

	CPVAN CP2 PIR Motion Sensor Alarm User Manual This manual provides instructions for the CPVAN CP2 PIR Motion Sensor Alarm, covering setup, operation, pairing, and troubleshooting. Learn how to arm, disarm, change sounds, and add sensors to your home security system.
	CPVAN CP2 PIR Motion Sensor Alarm User Manual User manual for the CPVAN CP2 PIR Motion Sensor Alarm, detailing setup, operation, pairing, troubleshooting, and technical specifications for home security.

 <p>CPVAN WiFi PIR Motion Sensor Alarm Compatible with our CPVAN Home Alarm Systems</p>	<p>CPVAN WiFi PIR Motion Sensor Alarm User Manual</p> <p>Comprehensive user manual for the CPVAN WiFi PIR Motion Sensor Alarm, detailing setup, product overview, specifications, preparation, and operation instructions for home security.</p>
	<p>CPVan Pet Immune PIR Motion Sensor: Operation Instructions and Features</p> <p>Comprehensive guide to the CPVan Pet Immune PIR Motion Sensor, covering installation, features, mode settings, and technical specifications for CPVan Home Alarm Systems.</p>
	<p>CPVAN Home Alarm System CP9 User Manual and Product Overview</p> <p>Comprehensive guide to the CPVAN Home Alarm System CP9, covering product overview, setup, features, and specifications for base station, remote control, door/window sensors, and PIR motion sensors.</p>
 <p>CPVAN WiFi PIR Motion Sensor Alarm Compatible with our CPVAN Home Alarm Systems</p>	<p>CPVAN WiFi PIR Motion Sensor Alarm User Manual</p> <p>Comprehensive user manual for the CPVAN WiFi PIR Motion Sensor Alarm, detailing setup, features, and operation for home security.</p>