

SineRise SR-FWDC-8L-GLD

SineRise 8-Light Gold Dandelion Firework Crystal Chandelier Instruction Manual

Model: SR-FWDC-8L-GLD

1. IMPORTANT SAFETY INFORMATION

Please read all instructions carefully before installation and use. Retain this manual for future reference.

- **Electrical Safety:** Always turn off the main power supply at the circuit breaker before beginning any electrical work. If you are unsure about electrical installation, consult a qualified electrician.
- **Bulb Requirements:** This fixture uses G9 bulbs. Bulbs are NOT included. To utilize dimming capabilities, use dimmable G9 bulbs and a compatible dimmer switch (not included).
- **Indoor Use Only:** This chandelier is designed for indoor use in dry locations. Do not expose to moisture or direct water.
- **Weight:** Ensure the ceiling junction box and mounting hardware can safely support the weight of the chandelier.

2. PRODUCT OVERVIEW

Features:

- **Unique Dandelion Design:** Features a gold-plated finish with radiating K9 crystal beads, creating a firework or dandelion effect.
- **K9 Crystal Beads:** Nano-cutting crystal beads are smooth, shiny, and refract light beautifully.
- **G9 Bulb Base:** Compatible with G9 bulbs for versatile lighting options.
- **Adjustable Height:** The hanging wire length is adjustable up to 47 inches (120 cm), allowing customization for various ceiling heights.
- **Easy Installation:** The chandelier comes pre-wired for simplified assembly and installation.

What's in the Box:

- Accessories Package (includes mounting hardware and crystal strings)



Image 2.1: The SineRise 8-Light Gold Dandelion Firework Crystal Chandelier.

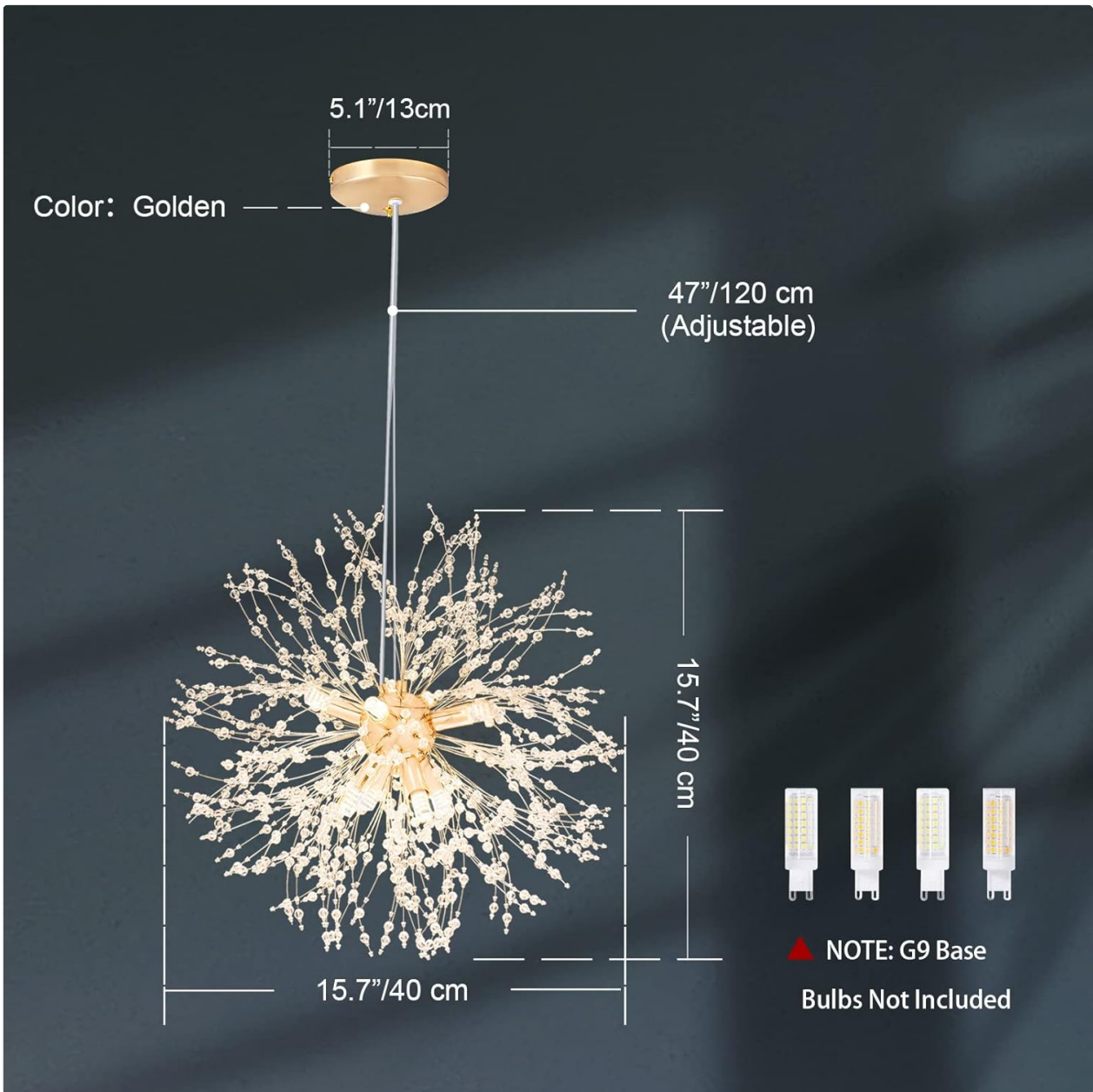


Image 2.2: Detailed dimensions of the chandelier, showing a 15.7 inch (40 cm) width and height, with an adjustable hanging wire up to 47 inches (120 cm).

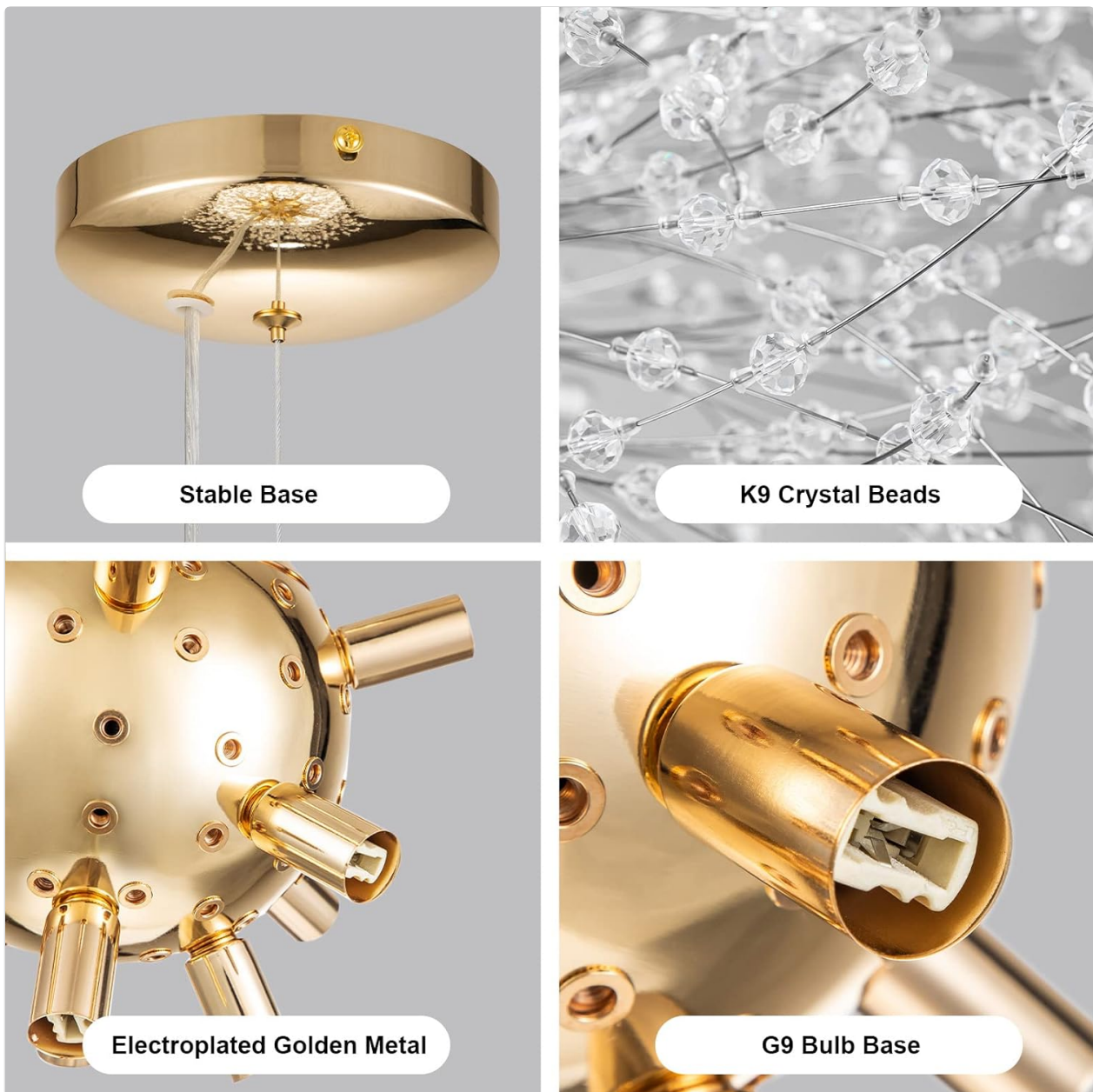


Image 2.3: Close-up view of the chandelier's stable base, K9 crystal beads, electroplated golden metal finish, and G9 bulb base.

3. SETUP AND INSTALLATION

This chandelier is designed for semi-flush mount installation. Professional installation is recommended.

1. **Prepare for Installation:** Turn off power at the circuit breaker. Ensure the mounting surface is clean and secure.
2. **Install Bulbs:** Insert G9 bulbs (not included) into each of the 8 bulb bases.
3. **Attach Crystal Strings:** Carefully screw each crystal string into the designated holes on the central sphere of the chandelier.
4. **Mount to Ceiling:** Follow standard semi-flush mount installation procedures to secure the chandelier to the ceiling junction box. Adjust the hanging wire length as needed before final tightening.
5. **Remove Plastic Rings:** After all crystal strings are in place, carefully cut and remove any plastic rings or ties used for packaging the crystal strings.

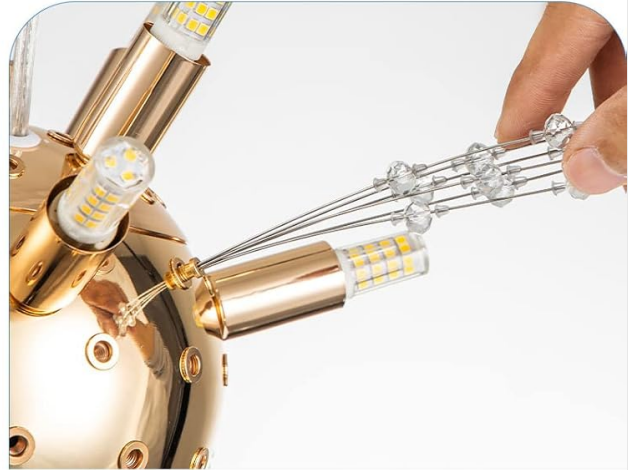
3-Step to Install

WARM TIPS: If you confuse the step of 1 and 2, you maybe easily poke your hand.



Step 1

Install all bulbs (BULBS NOT INCLUDED)



Step 2

Put crystal branches into the holes one by one



Step 3

Cut all plastic rings

Image 3.1: Visual guide for the 3-step installation process: installing bulbs, attaching crystal branches, and cutting plastic rings.

Your browser does not support the video tag.

Video 3.1: Official SineRise video demonstrating the assembly and installation of a modern crystal chandelier.

Your browser does not support the video tag.

Video 3.2: Official SineRise video showcasing the Firework Crystal Chandelier and its features.

4. OPERATING INSTRUCTIONS

Once installed and power is restored, the chandelier can be operated via your wall switch. If a dimmer switch and dimmable G9 bulbs are used, you can adjust the light intensity.

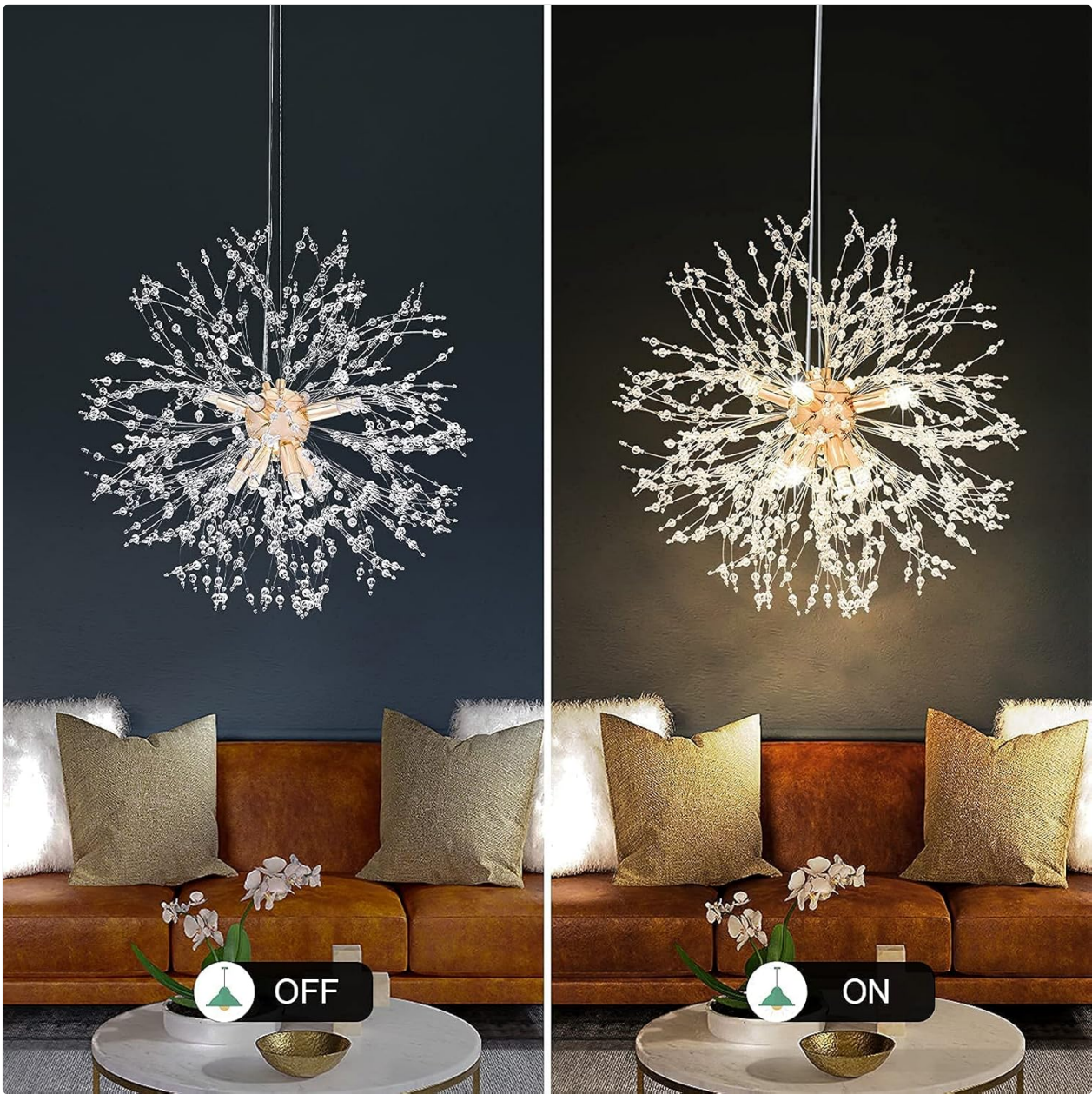


Image 4.1: The chandelier shown in both the off and on states, demonstrating its illumination.

5. MAINTENANCE

To maintain the appearance and functionality of your chandelier, follow these guidelines:

- **Cleaning:** Turn off power before cleaning. Use a soft, dry cloth to gently wipe the metal and crystal components. Avoid abrasive cleaners or chemicals that may damage the finish or crystals.
- **Bulb Replacement:** Ensure power is off before replacing bulbs. Allow bulbs to cool completely before handling. Replace with G9 bulbs of the correct wattage.
- **Inspection:** Periodically check all connections and components for tightness and wear.

6. TROUBLESHOOTING

If you encounter issues with your chandelier, refer to the following common problems and solutions:

Problem	Possible Cause	Solution
---------	----------------	----------

Problem	Possible Cause	Solution
Light does not turn on	No power supply; Loose wiring; Faulty bulb	Check circuit breaker; Ensure all wires are securely connected; Replace bulb(s).
Lights flicker	Loose bulb; Incompatible dimmer switch/bulb; Wiring issue	Tighten bulbs; Ensure dimmer and bulbs are compatible; Check wiring connections.
Chandelier is unstable	Loose mounting hardware	Ensure ceiling canopy and mounting bracket are securely fastened.

If the issue persists after trying these solutions, please contact customer support.

7. SPECIFICATIONS

- **Brand:** SineRise
- **Model Number:** SR-FWDC-8L-GLD
- **Color:** Gold
- **Material:** Crystal, Metal
- **Style:** Modern
- **Light Fixture Form:** Chandelier
- **Room Type:** Bedroom, Dining Room, Home Office, Kitchen, Living Room
- **Product Dimensions:** 16"L x 15.7"W x 15.7"H
- **Specific Uses For Product:** Indoor use only; Illumination; Home Decoration
- **Power Source:** AC
- **Installation Type:** Semi Flush Mount
- **Light Source Type:** Energy Efficient; LED (with compatible bulbs)
- **Finish Type:** Plated
- **Shade Material:** Metal & Crystal
- **Number of Light Sources:** 8
- **Voltage:** 110 Volts
- **Bulb Base:** G9
- **Wattage:** 25 Watt-hours (Maximum Compatible Wattage)
- **Assembly Required:** Yes
- **Item Weight:** 3.72 pounds

8. WARRANTY AND SUPPORT

SineRise provides a **12-Month Replacement Guarantee** for this product. If you experience any issues or require assistance, please contact SineRise customer support for a high-quality shopping experience and resolution.

For further support, please visit the official SineRise store on Amazon: [SineRise Lighting Store](#)