

Logitech 960-001332

Logitech Scribe Whiteboard Camera User Manual

Model: 960-001332

1. INTRODUCTION

The Logitech Scribe is an AI-powered whiteboard camera designed to integrate physical whiteboard content into video meetings. It is compatible with leading video conferencing services such as Microsoft Teams Rooms and Zoom Rooms. The Scribe utilizes built-in artificial intelligence and a custom lens to broadcast whiteboard content with enhanced clarity, ensuring remote participants have an unobstructed view. It supports standard dry erase markers and whiteboard surfaces up to 6 feet by 4 feet.

Content sharing can be initiated via a wireless share button or a meeting room touch controller, such as Logitech Tap.



Figure 1: Front view of the Logitech Scribe Whiteboard Camera.

2. WHAT'S IN THE BOX

Verify that all components are present in the packaging:

- Logitech Scribe Camera Unit
- Mounting Bracket
- Mounting Hardware (screws, anchors)
- USB to Ethernet Adapter
- PoE Injector (Power over Ethernet)
- Ethernet Cable
- Wireless Share Button (with AAAA batteries)
- Installation Template

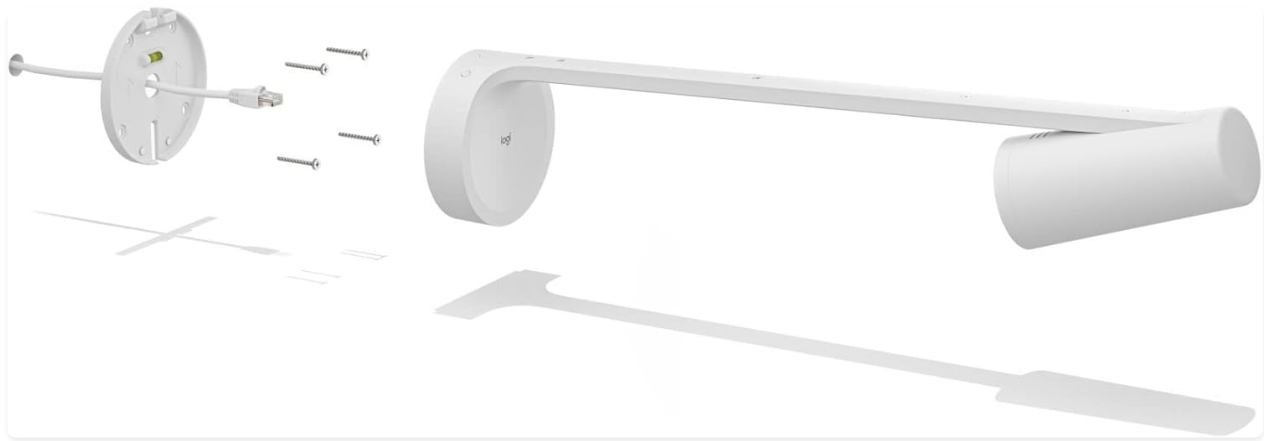


Figure 2: Contents of the Logitech Scribe package.

3. SETUP

Proper installation is crucial for optimal performance. Follow these steps for setting up your Logitech Scribe:

1. **Mounting the Camera:** Use the provided installation template to position the camera above the whiteboard. Secure the mounting bracket to the wall using the appropriate hardware. Ensure the camera is centered and at the correct height for your whiteboard dimensions (up to 6 ft x 4 ft).
2. **Connecting the Camera:** The Scribe connects to a computer via a USB to Ethernet adapter and a Power over Ethernet (PoE) injector. Connect the Ethernet cable from the camera unit to the PoE injector, then from the PoE injector to the USB to Ethernet adapter. Finally, connect the USB adapter to your meeting room computer.
3. **Cable Management:** Route cables neatly to maintain a professional appearance and prevent accidental disconnections. The mounting bracket includes channels for cable routing.



Figure 3: Rear view of the Logitech Scribe, illustrating mounting and connection points.



Figure 4: Illustration of cable routing through the Logitech Scribe mounting base.

4. OPERATING INSTRUCTIONS

The Logitech Scribe is designed for intuitive operation during video conferences.

1. **Initiating Whiteboard Sharing:** To share whiteboard content, press the wireless share button or use your meeting room's touch controller (e.g., Logitech Tap). The Scribe will automatically detect and broadcast the whiteboard feed to your video meeting.
2. **AI Features:** The Scribe's built-in AI enhances whiteboard content clarity and provides a transparency effect. This allows meeting participants to see 'through' the presenter, ensuring an unobstructed view of the writing on the whiteboard.
3. **Whiteboard Area:** The camera is optimized to capture whiteboards up to 6 feet by 4 feet. Ensure your whiteboard content stays within these dimensions for optimal capture.



Figure 5: The Logitech Scribe camera unit alongside its wireless share button.



Figure 6: A user interacting with a whiteboard while the Logitech Scribe captures the content for remote participants.

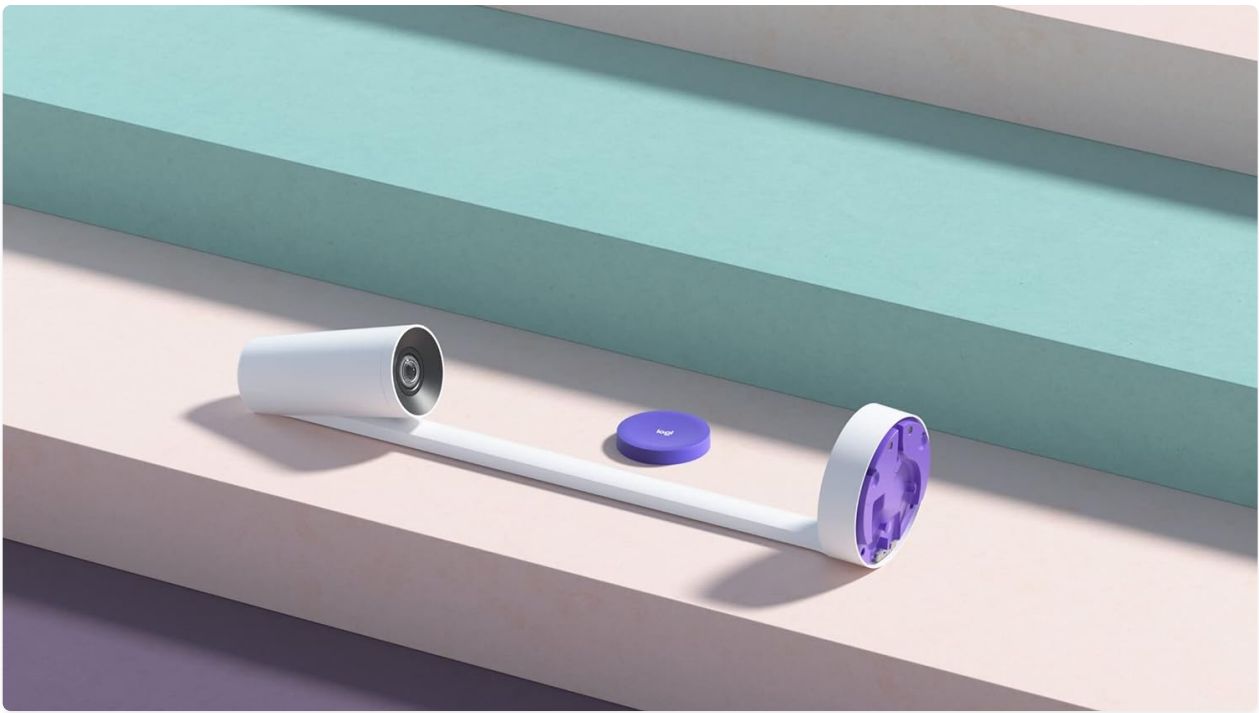


Figure 7: The Logitech Scribe camera integrated into a meeting room environment.

5. MAINTENANCE

To ensure the longevity and optimal performance of your Logitech Scribe, follow these maintenance guidelines:

- **Cleaning:** Gently wipe the camera lens and body with a soft, dry, lint-free cloth. Avoid using abrasive cleaners or solvents.
- **Whiteboard Care:** Use only dry erase markers on your whiteboard. Regularly clean the whiteboard surface to prevent marker residue buildup, which can affect the Scribe's image clarity.
- **Firmware Updates:** Periodically check for and install firmware updates for the Logitech Scribe through the Logitech Sync application. Updates can improve performance, add features, and resolve issues.
- **Wireless Share Button Batteries:** The wireless share button requires AAAA batteries. Replace them when the indicator light suggests low power or the button becomes unresponsive.



Figure 8: Underside of the wireless share button, indicating the battery compartment.

6. TROUBLESHOOTING

If you encounter issues with your Logitech Scribe, consider the following troubleshooting steps:

- **Image Distortion/Fuzzy Output:** If the whiteboard image appears distorted or fuzzy, use the Logitech Sync application to calibrate the camera. The app allows you to set four points on the raw camera image to correct fisheye distortion. Ensure these settings are saved and not inadvertently altered.
- **No Image/Connectivity Issues:**
 - Verify all cables (USB, Ethernet) are securely connected between the camera, PoE injector, USB to Ethernet adapter, and the computer.
 - Ensure the PoE injector is receiving power.
 - Check if the computer recognizes the Scribe as a camera device.
 - Restart the computer and the video conferencing application.
- **Share Button Unresponsive:**

- Check the batteries in the wireless share button and replace them if necessary.
- Ensure the share button is within range of the Scribe camera.
- **Content Not Clear:** Ensure you are using fresh, high-quality dry erase markers. Faded markers may not be captured clearly by the camera's enhancement features.

7. SPECIFICATIONS

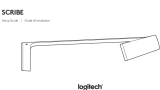
Feature	Specification
Model Number	960-001332
Product Dimensions	23.35 x 4.69 x 5.87 inches
Item Weight	2.4 pounds
Video Capture Resolution	1080p
Photo Sensor Technology	CCD
Connectivity Technology	USB
Supported Whiteboard Area	Up to 6 ft x 4 ft
Power Source	Power over Ethernet (PoE)
Wireless Share Button Batteries	1 AAAA battery required






8. WARRANTY AND SUPPORT

Logitech products are manufactured to high quality standards and are covered by a limited hardware warranty. For detailed warranty information, product support, and additional resources, please visit the official Logitech support website. You can find FAQs, troubleshooting guides, and contact information for customer service there.

For the most up-to-date information, please refer to the official Logitech website or the documentation included with your product.

Related Documents - 960-001332

	<p>Logitech Scribe Setup Guide</p> <p>A comprehensive setup guide for the Logitech Scribe whiteboard camera, detailing installation steps, connections, and recommended placement for optimal performance in video conferencing rooms.</p>
---	--

 <p>logitech</p> <p>04757002-0077 LOGITECH RALLY BAR</p> <p>Read the manual for important information about the Logitech Rally Bar, including safety information, setup, and troubleshooting. The manual is available in multiple languages and can be found at logitech.com/rallybar.</p> <p>04757002-0077 LOGITECH RALLY BAR</p>	<p>Logitech Rally Bar: All-in-One Video Bar for Medium Rooms</p> <p>Discover the Logitech Rally Bar, an all-in-one video conferencing solution designed for medium-sized rooms. Featuring brilliant optics, automated pan, tilt, zoom, and powerful audio, it delivers a natural and productive meeting experience. Learn about its features, setup, management, and technical specifications.</p>
<p>BRIO 501</p> <p>Setup Guide Guide d'installation</p>  <p>logitech</p>	<p>Logitech BRIO 501 Webcam Setup Guide</p> <p>A comprehensive setup guide for the Logitech BRIO 501 Full HD webcam, covering unboxing, mounting, connection, and software features like Logi Tune.</p>
<p>CONNECT</p> <p>Setup Guide Guide d'installation</p>  <p>logitech</p>	<p>Logitech Connect Setup Guide</p> <p>A comprehensive setup guide for the Logitech Connect video conferencing device, covering installation, product features, and usage instructions in multiple languages.</p>
<p>MX BRIO</p> <p>Setup Guide Guide d'installation 設置ガイド</p>  <p>logitech</p>	<p>Logitech MX BRIO Setup Guide: Crystal Clear Video for Your Workspace</p> <p>Learn how to set up and use your Logitech MX BRIO webcam with this comprehensive setup guide. Discover features like the ultrawide lens, dual noise-cancelling microphones, and easy mounting options for enhanced video conferencing.</p>
<p>RALLY CAMERA</p> <p>Setup Guide Guide d'installation</p>  <p>logitech</p>	<p>Logitech Rally Camera Setup Guide</p> <p>Official setup guide for the Logitech Rally Camera, detailing unboxing, component identification, connection, mounting, and basic operation. Includes troubleshooting and support information.</p>