

cellularline BTKEYTWSW

cellularline Key In-Ear True Wireless Earbuds User Manual

Model: BTKEYTWSW

1. INTRODUCTION

This manual provides detailed instructions for the proper use, setup, and maintenance of your cellularline Key In-Ear True Wireless Earbuds. Please read this manual thoroughly before using the product to ensure optimal performance and longevity.

2. PACKAGE CONTENTS

- cellularline Key In-Ear True Wireless Earbuds (Left and Right)
- Charging Case with LED Display
- USB-C Charging Cable
- User Manual

3. PRODUCT OVERVIEW

The cellularline Key In-Ear True Wireless Earbuds offer a compact design with intuitive touch controls and a convenient LED display charging case.



Figure 3.1: The cellularline Key In-Ear True Wireless Earbuds resting in their charging case.



Figure 3.2: The charging case features an LED display that indicates the current battery level.



**Compact
Size**
Extra Lightweight

Figure 3.3: The compact and lightweight design of the charging case allows for easy portability.

4. CHARGING THE EARBUDS AND CASE

To ensure optimal performance, fully charge your earbuds and charging case before first use.

4.1. Charging the Earbuds

1. Place the earbuds into their respective slots in the charging case.
2. Ensure the charging case has sufficient power. The earbuds will begin charging automatically.

4.2. Charging the Charging Case

1. Connect the provided USB-C charging cable to the charging port on the case.
2. Connect the other end of the USB-C cable to a compatible USB power source (e.g., wall adapter, computer USB port).
3. The LED display on the case will show the current charge level. A full charge takes approximately 4 hours.

The earbuds provide up to 4 hours of continuous playback on a single charge, with an additional 12 hours of playtime available from the fully charged case, totaling 16 hours of battery life.

5. SETUP AND PAIRING

Follow these steps to pair your cellularline Key Earbuds with your device.

5.1. Initial Pairing

1. Ensure your earbuds are charged.
2. Open the charging case. The earbuds will automatically power on and enter pairing mode.
3. On your smartphone or Bluetooth-enabled device, navigate to the Bluetooth settings.
4. Search for available devices and select "cellularline Key" from the list.
5. Once connected, you will hear an audible confirmation, and the earbuds will be ready for use.

5.2. Automatic Reconnection

After initial pairing, the earbuds will automatically connect to the last paired device when removed from the charging case, provided Bluetooth is enabled on the device.



Figure 5.1: The earbuds are designed for seamless wireless connection with your smartphone for music and calls.

6. OPERATING INSTRUCTIONS

The cellularline Key Earbuds feature intuitive touch controls for managing calls, music, and volume.

6.1. Touch Controls

Function	Action
Play/Pause Music	Single tap on either earbud
Next Track	Double tap on the right earbud
Previous Track	Double tap on the left earbud
Answer/End Call	Single tap on either earbud
Reject Call	Press and hold either earbud for 2 seconds
Activate Voice Assistant	Triple tap on either earbud (functionality may vary by device)

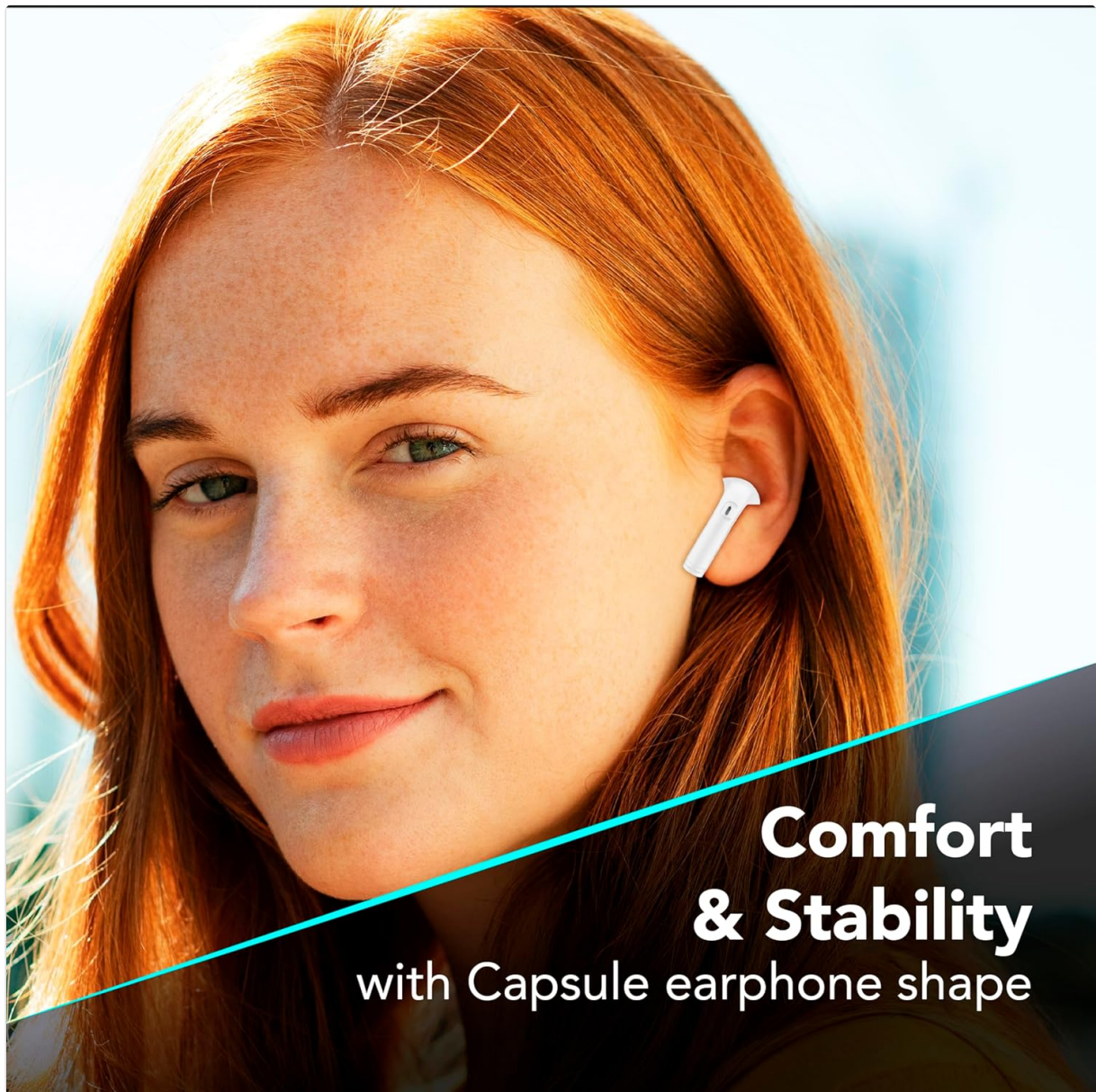
6.2. Double Master Function

The earbuds support a double master function, allowing you to use either the left or right earbud independently for calls or music playback. This provides flexibility and convenience.

7. MAINTENANCE AND CARE

Proper care will extend the life of your earbuds.

- Keep the earbuds and charging case clean and dry.
- Use a soft, dry cloth to wipe the surfaces. Avoid using abrasive cleaners or solvents.
- Store the earbuds in their charging case when not in use to protect them and keep them charged.
- Avoid extreme temperatures and direct sunlight.
- Do not attempt to disassemble the product, as this will void the warranty.



Comfort & Stability with Capsule earphone shape

Figure 7.1: The in-ear design provides a comfortable and stable fit for extended wear.

8. TROUBLESHOOTING

If you encounter issues with your earbuds, refer to the following common solutions.

Problem	Possible Solution
Earbuds not pairing	<ul style="list-style-type: none">◦ Ensure earbuds are charged.◦ Turn off and on Bluetooth on your device.◦ Forget the device in your Bluetooth settings and re-pair.◦ Ensure earbuds are removed from the case to enter pairing mode.
No sound from one earbud	<ul style="list-style-type: none">◦ Place both earbuds back in the case, close it, then reopen and remove them.◦ Check device audio balance settings.

Problem	Possible Solution
Charging case not charging	<ul style="list-style-type: none">◦ Ensure the USB-C cable is properly connected.◦ Try a different USB-C cable or power adapter.
Touch controls not responding	<ul style="list-style-type: none">◦ Ensure your fingers are clean and dry.◦ Restart the earbuds by placing them in the case and then removing them.

9. SPECIFICATIONS

Feature	Detail
Model Number	BTKEYTWSW
Connectivity	Bluetooth 5
Earbud Battery Life	Up to 4 hours (single charge)
Total Playtime (with case)	Up to 16 hours
Charging Time (Case)	Approximately 4 hours
Charging Port	USB-C
Material	Plastic
Special Features	True Wireless, Touch Control, LED Display Charging Case, Double Master Function

10. WARRANTY AND SUPPORT

Your cellularline Key In-Ear True Wireless Earbuds are covered by a standard manufacturer's warranty. For specific warranty details, please refer to the warranty card included in your product packaging or visit the official cellularline website.

For technical support, troubleshooting assistance beyond this manual, or warranty claims, please contact cellularline customer service through their official channels.