

## Makeid L1-A

# Makeid Label Maker L1-A User Manual

Portable & Rechargeable Wireless Label Printer

## 1. PRODUCT OVERVIEW

The Makeid L1-A Label Maker is a portable and rechargeable wireless label printer designed for creating custom labels at home, school, or work. It connects wirelessly via Bluetooth to compatible Android and iOS devices, allowing users to design personalized labels using a dedicated mobile application. This device utilizes thermal printing technology to produce clear and lasting prints on waterproof, fade-resistant, and residue-free label tapes. It features a built-in cutter for easy label separation.



Figure 1: Makeid L1-A Label Maker with a roll of label tape and examples of printed labels, demonstrating its compact size and output capabilities.

## 2. SAFETY INFORMATION

- Do not expose the device to extreme temperatures, direct sunlight, or high humidity.
- Keep the device away from water and other liquids.
- Do not attempt to disassemble or repair the device yourself. Refer to qualified service personnel.
- Use only Makeid approved label tapes and accessories.
- Keep out of reach of children.
- Ensure proper ventilation during charging.

## 3. SETUP GUIDE

### 3.1 Unboxing and Initial Charge

Carefully remove the label maker and any accessories from the packaging. Before first use, fully charge the device

using the provided USB cable. The charging indicator light will typically change color or turn off when charging is complete.

### 3.2 Installing Label Tape

1. Open the tape compartment cover on the label maker.
2. Insert the label tape cartridge, ensuring it clicks into place securely.
3. Gently pull a small length of tape out of the cartridge, extending it slightly past the cutter.
4. Close the tape compartment cover.

## Durable and Crisp Print Labels

Quick Access, Tidy Space



Figure 2: The Makeid label maker with its tape compartment open, illustrating the process of inserting a label tape cartridge.

### 3.3 App Download and Bluetooth Connection

The Makeid label maker operates via a dedicated mobile application. Download the "MakeID-Life" app from your device's app store (Google Play for Android, App Store for iOS).



Figure 3: Step-by-step guide within the Makeid app demonstrating how to turn on Bluetooth, select the L1 model, and confirm the connection for printing.

1. Ensure Bluetooth is enabled on your smartphone or tablet.
2. Open the MakeID-Life app.
3. Turn on the Makeid label maker by pressing the power button.
4. Within the app, navigate to the device connection section (often indicated by a Bluetooth icon or "Connect Device").
5. Select the "L1" model from the list of available devices.
6. Confirm the connection. The app will indicate when the device is successfully paired.

## 4. OPERATING INSTRUCTIONS

---

### 4.1 Designing Labels

The MakeID-Life app provides a versatile interface for label design. You can:

- Enter text and choose from multiple font styles.
- Add numbers, symbols, emojis, and icons.
- Create continuous labels or die-cut labels (depending on tape type).
- Adjust label length and other parameters.



# Versatile Printing

## ✓ Multi-Font Selection

MAKEiD-Life MAKEiD-Life  
MAKEiD-Life MAKEiD-Life  
MAKEiD-Life MAKEiD-Life  
MAKEiD-Life MAKEiD-Life  
MAKEiD-Life MAKEiD-Life  
MAKEiD-Life MAKEiD-Life

## ✓ DIY as You Like



Figure 4: The Makeid-Life app displaying various font choices and customization features, including the ability to add images, QR codes, and barcodes to labels.

## 4.2 Printing Labels

Once your label design is complete in the app:

1. Tap the "Print" button within the app.
2. The label maker will begin printing the label.

- 3. After printing, wait for the label to fully emerge from the printer.
- 4. Press the built-in cutter button to cleanly cut the label.

# Dual Printing, Better Classification



## Continuous label

- 9 mm Client Proposals
- 12 mm Insurance Policies
- 16 mm User Manuals

## Die Cut Label

- Opening date 05/03/2024
- Cleansing water
- Jessica



Figure 5: Examples of labels created with the Makeid label maker, demonstrating its versatility for continuous labels (9mm, 12mm, 16mm widths) and die-cut labels, suitable for various classification needs.



# Efficient Labeling Efficient Living

## Personal



Kevin Scott



## Business



\$1.89

## Kitchen



Marking of food,  
utensils, etc.



## Cautionary

Marker Reminder

Figure 6: Demonstrations of the Makeid label maker's practical applications, including personal item identification, business product labeling, kitchen organization, and cautionary reminders.

## 5. MAINTENANCE

### 5.1 Cleaning the Print Head

To ensure optimal print quality, periodically clean the thermal print head. Use a soft, lint-free cloth lightly dampened with isopropyl alcohol. Gently wipe the print head surface. Ensure the device is turned off and unplugged before



cleaning.

### 5.2 Storage

Store the label maker in a cool, dry place away from direct sunlight and extreme temperatures. Remove the label tape cartridge if the device will not be used for an extended period.

## 6. TROUBLESHOOTING

Problem	Possible Cause	Solution
Device won't turn on	Low battery; Power button not pressed correctly	Charge the device; Press and hold the power button for a few seconds.
Cannot connect via Bluetooth	Bluetooth off on phone/tablet; Device not in pairing mode; App issue	Ensure Bluetooth is on; Restart the label maker; Restart the app; Forget device in phone's Bluetooth settings and re-pair.
Poor print quality / Faded print	Print head dirty; Incorrect tape installed; Low battery	Clean the print head; Ensure correct Makeid tape is used; Charge the device.
Tape jam / Label not feeding	Tape not installed correctly; Obstruction in tape path	Re-install tape cartridge; Check for any debris and carefully remove.

## 7. SPECIFICATIONS

- Brand:** Makeid
- Model Name:** L1-A
- Connectivity Technology:** Bluetooth
- Printing Technology:** Thermal
- Special Features:** Portable, Wireless, Built-in Cutter
- Compatible Tape Widths:** 9mm, 12mm, 16mm
- Printer Output:** Monochrome
- Max Print Speed:** 25 ppm
- Item Weight:** 0.28 Pounds (approx. 127g)
- DPI Resolutions:** 203DPI, 300DPI (model dependent)

## 8. WARRANTY AND SUPPORT

Specific warranty information is typically provided with your product packaging or on the manufacturer's official website. Please refer to these resources for details regarding warranty coverage and terms.

For technical support, troubleshooting assistance beyond this manual, or inquiries about replacement parts and accessories, please visit the official Makeid website or contact their customer service department. Contact information can usually be found on the product packaging or the Makeid brand store page.

*Note: As per the provided product data, specific warranty duration or direct support contact details are not available in this document.*

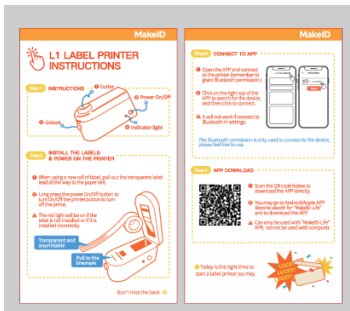
## Documents - Makeid – L1-A



### [\[pdf\]](#) User Manual Instructions Label

L1 B 05 2022048 Save MAKEID A QUICK OPERATION MANUAL Pdf Download ManualsLib 71ef5e data2 manualslib c 58 288 28701 |||

Manualslib.com - Simplified Manuals Manuals / Brands / MAKEiD Manuals / Label Maker / **L1-A** / Quick operation manual / PDF MAKEID**L1-A** QUICK OPERATION MANUAL Under the environment with Electrostatic Discharge Test Results the sample may be disconnected, but it can be resumed to normal operation by ...  
lang:en score:34 filesize: 9.33 M page\_count: 47 document date: 2025-02-02



### [MakeID L1 Label Printer: Quick Start Instructions](#)

Concise instructions for setting up and using the MakeID L1 Label Printer, covering initial setup, label loading, powering on, and connecting to the MakeID-Life app via Bluetooth.

lang:en score:22 filesize: 644.74 K page\_count: 1 document date: 2022-09-02

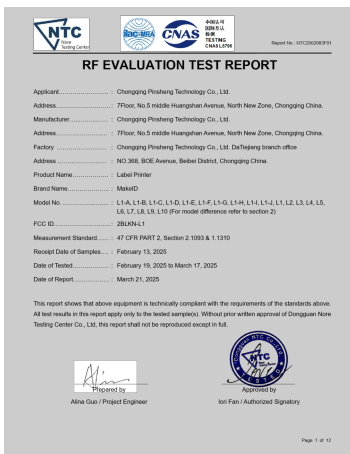


### [\[pdf\]](#) Instructions

L1 B 05 2022048 D1io vxrp5L m media amazon images I |||

Under the environment with Electrostatic Discharge Test Results the sample may be disconnected, but ... y to operate the equipment. Chongqing Jingranyouxu Technology Co., Ltd. Web: WWW.MAKEID.COM MAKEID **L1-A** QUICK OPERATIONAL MANUAL Content Contenuto Zawarto Innehll Inhoud English Quick operational ...

lang:en score:21 filesize: 9.33 M page\_count: 46 document date: 2022-04-28



### [\[pdf\]](#) Test Report SAR Rating Label

Rose RF Exposure Chongqing Pinsheng Technology Co Ltd L1 Label Printer 2BLKN 2BLKNL1 I1

Report No.: NTC2502083F01 RF EVALUATION TEST REPORT

Applicant..... : Chongqing P ... .. : Label Printer Brand

Name..... : MakeID Model No. .... : **L1-A**, L1-B, L1-C, L1-D, L1-E, L1-F, L1-G, L1-H, L1-I, L1-J, L1, L2, L3, L4, L5, L6, L7, L8, L9, L10 ...

lang:en score:18 filesize: 360.8 K page\_count: 12 document date: 2025-03-28

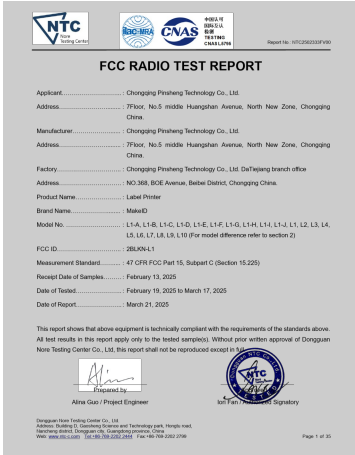


[\[pdf\]](#) User Manual

L1 A 05 20230317 CLICK DOWNLOAD User Manual Download MakeID A v 1735180108 cdn shopify  
s files 1 0808 9124 8833 |||

...

lang:en score:17 filesize: 5.23 M page\_count: 35 document date: 2023-03-17



[\[pdf\]](#) Test Report Label

ELECTROMAGNETIC EMISSIONS COMPLIANCE REPORT fly Test report Chongqing Pinsheng

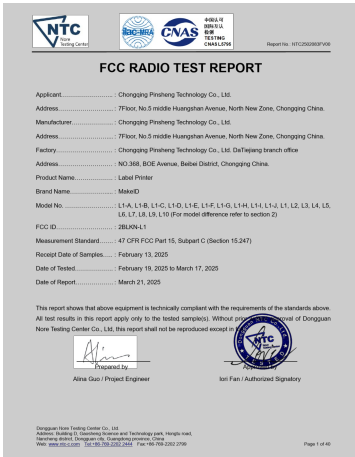
Technology Co Ltd L1 Label Printer 2BLKN 2BLKNL1 I1

Report No.: NTC2502333FV00 FCC RADIO TEST REPORT

Applicant..... : Chongqing ... Label Printer Brand

Name..... : MakeID Model No. .... : **L1-A**, L1-B, L1-C, L1-D, L1-E, L1-F, L1-G, L1-H, L1-I, L1-J, L1, L2, L3, L4, L5, L6, L7, L8, L9, L10 ...

lang:en score:17 filesize: 1.67 M page\_count: 35 document date: 2025-03-31



[\[pdf\]](#) Test Report Label

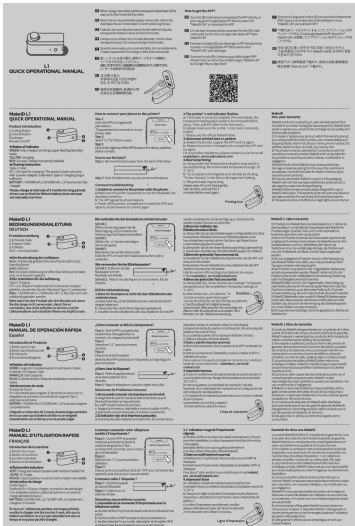
Rose Test report Chongqing Pinsheng Technology Co Ltd L1 Label Printer 2BLKN 2BLKNL1 I1

Report No.: NTC2502083FV00 FCC RADIO TEST REPORT

Applicant..... : Chongqing Pin ... : Label Printer Brand

Name..... : MakeID Model No. .... : **L1-A**, L1-B, L1-C, L1-D, L1-E, L1-F, L1-G, L1-H, L1-I, L1-J, L1, L2, L3, L4, L5, L6, L7, L8, L9, L10 ...

lang:en score:16 filesize: 3.28 M page\_count: 40 document date: 2025-03-28



[\[pdf\]](#) User Manual

FXD 542 3 L1 MakeID Life L1 QUICK OPERATIONAL MANUAL Product Introduction 1 Cutting  
Button 2 Unlock Indicator 4 Power On Off ☆Status of indicator GREEN 31 gen 2025 — JP QR

Google Apple APP Store Life User Manual makeid global 01 |||

...

lang:en score:15 filesize: 11.58 M page\_count: 2 document date: 2025-01-23



REPORT NO.: SJZS202024701

# TEST REPORT

**APPLICANT** : Chongqing Pinsheng Technology Co., Ltd.

**PRODUCT NAME** : PCB Airtenna

**MODEL NAME** : Ant-L1

**TRADE NAME** : MakerID

**BRAND NAME** : N/A

**STANDARD(S)** : IEEE Std 149-1921

**RECEIPT DATE** : 2025-02-26

**TEST DATE** : 2025-02-26

**ISSUE DATE** : 2025-03-03

Edited by: Mao Ruyue  
Mao Ruyue(Rapporteur)  
*in charge*

Approved by: Chi Shide  
Chi Shide(Supervisor)

NOTE: This document is issued by Shenzhen Mobide Communications Technology Co., Ltd. The test report shall not be reproduced except in full and for the stated purpose of the contract. The test results apply only to the particular specimen submitted and to the specific tests carried out which is described or referred to in the contract and the certificate. Other results are not valid.

**NORLAB**

Shenzhen Mobide Communications Technology Co., Ltd. | 5 Building A,  
No. 10, Shuangyuan Road, Shuangyuan Community, Longhua District, Shenzhen  
Guangdong, China | 518108

Tel: 86 755 28693510

Fax: 86 755 28693511

E-mail: test@norlab.cn

Web: www.norlab.cn

E-mail: test@norlab.cn

E-mail: test@norlab.cn

Page 1 of 10

[\[pdf\]](#) Specifications Test Report Label

X Antenna Specification Chongqing Pinsheng Technology Co Ltd L1 Label Printer 2BLKN 2BLKNL1 I1  
REPORT No.SZ25020247E01 TEST REPORT APPLICANT : Chongqing Pinsheng  
Technology Co., Ltd. PRODUCT NAME : PCB Antenna MODEL NAME : Ant-L1  
TRADE NAME : MakeID BRAND NAME : N/A STANDARD S : IEEE Std 149-2021  
RECEIPT DATE : 2025-02-26 TEST DATE : 2025-02-26 ISSUE DATE : 2025-03-03  
Edit...

lang:en score:15 filesize: 1.31 M page\_count: 14 document date: 2025-03-03

Report No.: 20230917011840X-W1

# EMC TEST REPORT

Report No.: 20230917011840X-W1

FCC ID: 2AUMQ-P1

Product Name: Label Printer

Main Model No: P1

P1-A1-P1-B1-C1-D1-E1-F1-G1-H1-P1-I1-J1-P2-P3-P4-P5-P6-P7-P8-P9-P10

Applicant: Gongcheng Jiangyuan Technology Co., Ltd.

Address: No. 11th, 5F, 501 Office Building, Memory Science and Technology Building, No.5th Huangshan Avenue, High-tech park, Chongqing, China

Received Date: 2023.09.12

Dates of Testing: 2023.09.18-2023.09.19

Issued by: CGC Southern Testing Co., Ltd.

Lab Location: Electronic Testing Building, No. 43 Shahe Road, XII Street, Nanshan District, Shenzhen, Guangdong, China.

Tel: 86 755 26627338 Fax: 86 755 26627238

This test report consists of 18 pages in total. It may be duplicated completely for legal use with the approval of our laboratory. It should not be reproduced except in full, without the written approval of our laboratory. The client should not use it as claim product endorsement by CGC-SET. The test results in this report only apply to the tested sample. The test report shall be invalid without all the signatures of testing engineers, reviewer and approver. Any objections must be raised to CGC-SET within 15 days since the date when the report is received. It will not be taken into consideration beyond this limit.

CGC-SET/CLIENT/20230917011840X-W1

Page 1 of 18

[\[pdf\]](#) Test Report Label

47 CFR PART 24 SUBPART E Zhang Weimin Test Report Chongqing Jingranyouxu Technology Co Ltd  
P1 Label Printer 2AUMQ 2AUMQP1 p1

Report No.: 20230917G11840X-W1 EMC TEST REPORT Report No.:

20230917G11840X-W1 FCC ID: 2AUMQ-P1 Product Name: Label Printer Main

Model No. P1 Series Model No. : P1-A,P1-B,P1-C,P1-D,P1-E,P1-F,P1-G,P1-H,P1-

I,P1-J,P2,P3,P4, P5,P6,P7,P8,P9,P10 Applicant: Chongqing Jingranyouxu

Technology Co., Ltd. Addres...

lang:en score:11 filesize: 1.08 M page\_count: 18 document date: 2023-10-26