

vidaXL 3069579

vidaXL Freestanding Manual Retractable Awning User Manual

Model: 3069579

1. IMPORTANT SAFETY INFORMATION

Please read all instructions carefully before assembly and use. Retain this manual for future reference.

- Assembly may require proper anchoring techniques to prevent accidents. Ensure the awning is securely anchored to a stable surface.
- Be cautious of moving parts when opening and retracting the awning to avoid injury. Keep hands and clothing clear of the folding arms.
- Do not use the awning in strong winds, heavy rain, or snow. Retract the awning completely during adverse weather conditions to prevent damage.
- Regularly inspect all components for wear, damage, or loose connections. Replace damaged parts immediately.
- Keep children and pets away from the awning during operation.

2. PRODUCT OVERVIEW

The vidaXL Freestanding Manual Retractable Awning provides adjustable shade for outdoor spaces. It features a rust-resistant powder-coated aluminum frame and a high-density polyester fabric with PU coating, offering UV and water resistance. The awning is manually operated via a hand crank, allowing for smooth extension and retraction. Its sturdy base can rotate 360 degrees for optimal positioning.



Image 1: The vidaXL Freestanding Manual Retractable Awning in its fully extended position, showcasing its black fabric and white frame.



Image 2: The awning installed on a patio, providing shade over outdoor furniture, demonstrating its practical application.

3. COMPONENTS LIST

Before assembly, ensure all parts are present and undamaged. Refer to the following list and images for identification:

- Awning Fabric Roll (with integrated frame)
- Folding Support Arms
- Vertical Support Posts
- Base Plate(s)
- Hand Crank
- Mounting Brackets and Anchors (for securing the base)
- Assembly Hardware (bolts, nuts, washers)



Image 3: Close-up of the mounting brackets and anchor bolts, essential for securing the awning's base.

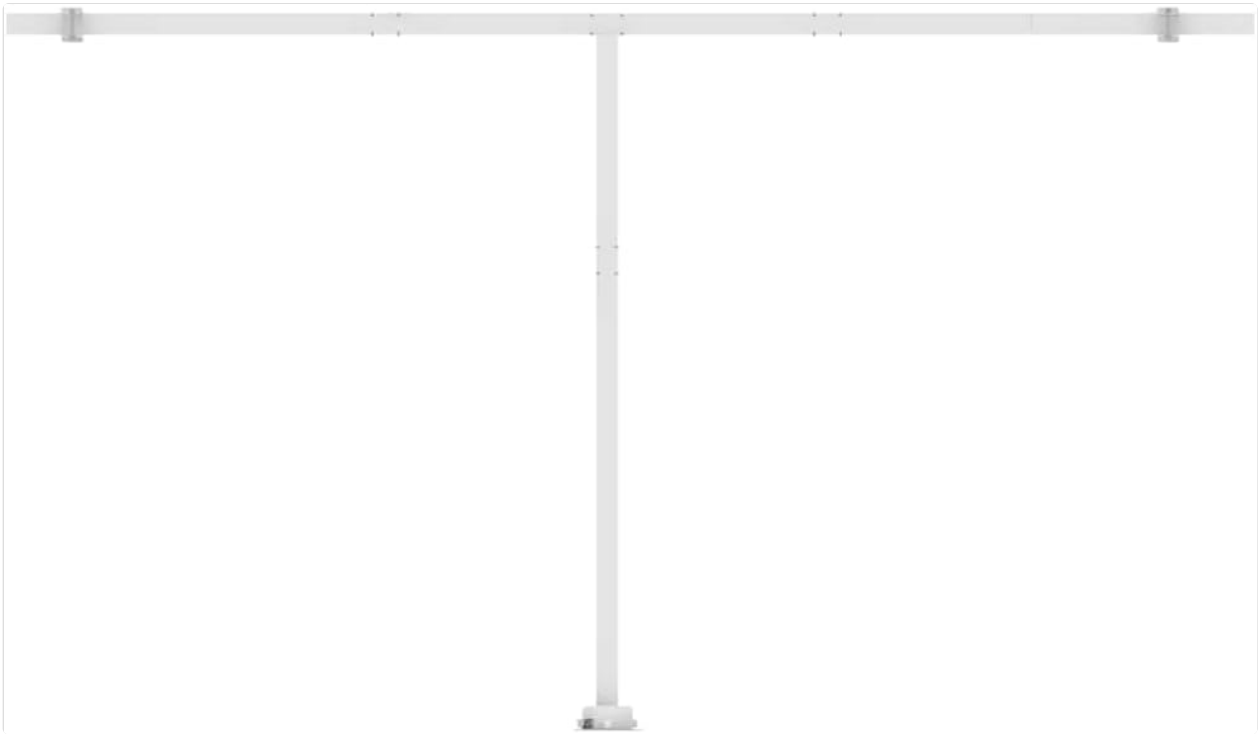


Image 4: Illustration of the main frame structure, showing the horizontal bar and vertical support post.

4. SETUP AND ASSEMBLY

Assembly of the vidaXL Freestanding Manual Retractable Awning requires careful attention to detail and proper anchoring. It is recommended that two people perform the assembly.

General Assembly Steps:

1. **Unpack and Identify:** Carefully unpack all components and verify against the components list.
2. **Assemble the Frame:** Connect the horizontal bar to the vertical support posts using the provided hardware. Ensure all connections are tight and secure.
3. **Attach Awning Fabric:** Secure the awning fabric roll to the assembled frame according to the specific instructions provided in the packaging.
4. **Install Folding Arms:** Attach the folding support arms to the main frame and the front bar of the awning.
5. **Secure the Base:** Position the base plate(s) in the desired location. Use appropriate anchoring techniques (e.g., concrete anchors for concrete patios, ground stakes for soft ground) to firmly secure the base. Proper anchoring is crucial for stability and safety.
6. **Attach Hand Crank:** Connect the hand crank to the designated mechanism for operation.
7. **Initial Test:** Slowly extend and retract the awning manually to ensure smooth operation and proper alignment.

Warning: Always ensure the awning is properly anchored to prevent tipping or collapse, especially in windy conditions.

5. OPERATING INSTRUCTIONS

The vidaXL Freestanding Manual Retractable Awning is designed for simple manual operation.

Extending the Awning:

- Insert the hand crank into the designated loop or hook on the awning mechanism.
- Rotate the hand crank clockwise to extend the awning. Continue rotating until the desired extension is

reached.

- Do not force the awning beyond its maximum extension limit.

Retracting the Awning:

- Insert the hand crank into the designated loop or hook.
- Rotate the hand crank counter-clockwise to retract the awning. Continue rotating until the awning is fully closed.
- Ensure the awning is fully retracted during strong winds or when not in use for extended periods.

Adjusting Angle and Height:

The awning's angle and height can be adjusted to suit your specific needs. Refer to the assembly instructions for detailed steps on how to loosen and tighten the adjustment points on the support posts and folding arms.

The base can also be rotated 360 degrees for optimal positioning.



Image 5: The hand crank mechanism used to manually extend and retract the awning.

6. MAINTENANCE AND CARE

Proper maintenance ensures the longevity and optimal performance of your awning.

- **Cleaning the Fabric:** Clean the polyester fabric with a soft brush or cloth, mild soap, and lukewarm water. Rinse thoroughly with clean water and allow it to air dry completely before retracting. Do not use harsh chemicals or abrasive cleaners.
- **Frame Maintenance:** Periodically inspect the aluminum frame for any signs of rust, corrosion, or damage. Clean the frame with a damp cloth. If necessary, touch up any scratches with rust-inhibiting paint.
- **Moving Parts:** Lubricate moving parts, such as the folding arms and crank mechanism, annually with a silicone-based spray to ensure smooth operation.
- **Hardware Check:** Regularly check all bolts, nuts, and anchoring points to ensure they remain tight and secure. Tighten any loose hardware.
- **Weather Protection:** Always retract the awning during strong winds, heavy rain, or snow to prevent damage to the fabric and frame.

7. TROUBLESHOOTING

If you encounter issues with your awning, refer to the following common problems and solutions:

Problem	Possible Cause	Solution
Awning does not extend or retract smoothly.	Obstruction in the mechanism or arms; lack of lubrication; bent arm.	Check for any obstructions and remove them. Apply silicone lubricant to moving parts. Inspect arms for damage and replace if necessary.
Awning feels unstable or wobbly.	Improper or loose anchoring; damaged base plate or support post.	Verify that the base is securely anchored to the ground. Tighten all bolts and connections. Inspect base and posts for damage.
Fabric sags or collects water.	Insufficient tension; incorrect angle adjustment.	Ensure the awning is fully extended and the fabric is taut. Adjust the angle of the awning to allow for proper water runoff.

8. PRODUCT SPECIFICATIONS

Detailed specifications for the vidaXL Freestanding Manual Retractable Awning, Model 3069579:

Feature	Detail
Model Number	3069579
Brand	vidaXL
Color	Black (Anthracite)
Material	Powder-coated aluminum frame, 100% polyester fabric with PU coating
Overall Size (W x H)	196.9 inches x 118.1 inches (500 cm x 300 cm)
Post Size (W x H)	177.2 inches x 96.5 inches (450 cm x 245 cm)
Item Weight	149.8 pounds (68.08 kg)
Operation Mode	Manual (Hand Crank)
Assembly Required	Yes
UV and Water Resistant	Yes

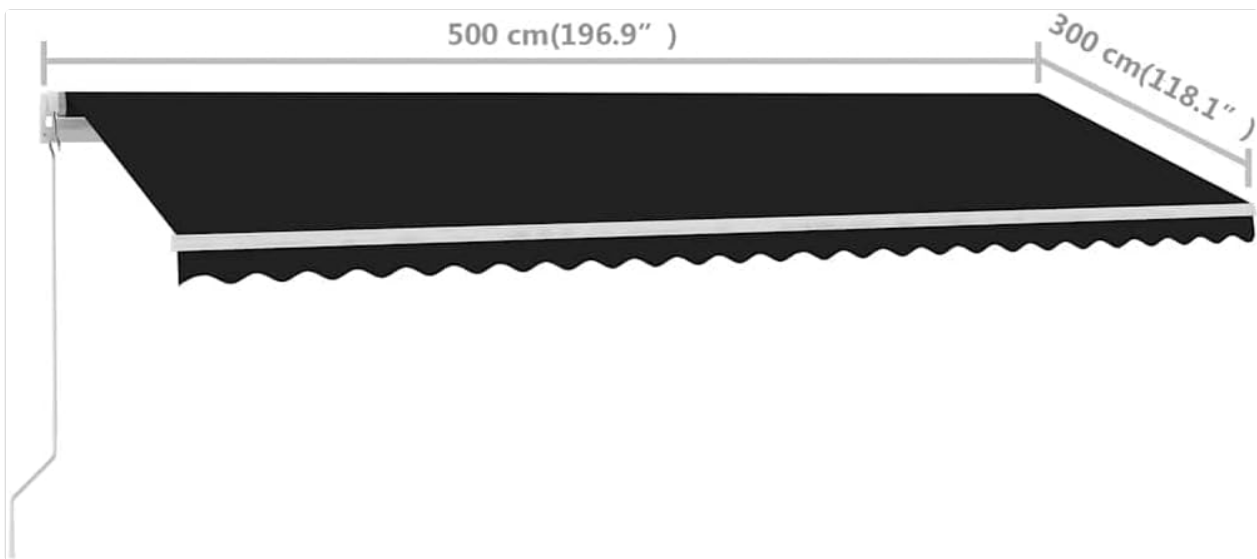


Image 6: Dimensional diagram of the awning, indicating its width (500 cm / 196.9 inches) and projection (300 cm / 118.1 inches).

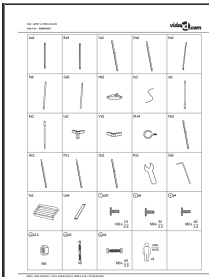
9. WARRANTY AND SUPPORT

For warranty information, product support, or to purchase replacement parts, please contact vidaXL customer service or visit the official vidaXL store.

You can find more information and contact details on the [vidaXL Store on Amazon](#).

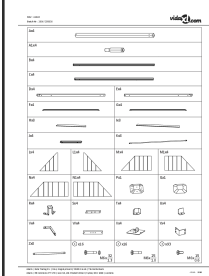
Related Documents - 3069579

	<p>VidaXL Automatic Retractable Awning User Manual</p> <p>Comprehensive user manual for the VidaXL Automatic Retractable Awning (models 313214, 313218, 313254, 313258), covering safety instructions, operation, and maintenance in multiple languages.</p>
	<p>vidaXL Awning Assembly Instructions and Safety Information</p> <p>This document provides assembly instructions and safety warnings for the vidaXL awning, SKU 148144+148147. It includes a parts list and step-by-step guidance for installation.</p>
	<p>VidaXL Extended Producer Responsibility (EPR) Guide</p> <p>Learn about VidaXL's commitment to Extended Producer Responsibility (EPR) for EEE and textile waste. Discover recycling information, obligations, and partners.</p>



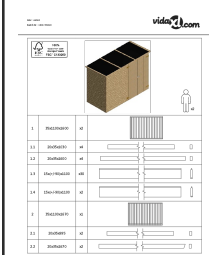
[vidaXL Garden Gazebo with Retractable Roof Assembly Instructions](#)

Detailed assembly guide for the vidaXL Garden Gazebo with Retractable Roof (SKU: 40787+47955+312221). Includes parts list, step-by-step instructions, and safety warnings.



[vidaXL Gazebo Assembly Instructions](#)

Comprehensive assembly instructions and safety guidelines for the vidaXL Gazebo (SKU: 44640). Includes parts list and step-by-step assembly diagrams.



[vidaXL Garden Shed Assembly Instructions](#)

Comprehensive assembly instructions for the vidaXL Garden Shed, including a parts list and step-by-step visual guides. SKU: 46363.