

VTech VM819-2

VTech VM819-2 Digital Video Baby Monitor User Manual

Model: VM819-2

Brand: VTech

INTRODUCTION

Check in on your little one with a 2.8-inch LCD screen on the VTech VM819-2 Digital Video Baby Monitor. Soothe your baby using the lullabies and soft sounds that play right from the baby unit. Plus, you can make sure your infant is cozy by monitoring the nursery temperature that's displayed right on the LCD screen. Best of all, with the industry's best battery life, you can easily monitor your baby throughout the night with up to 19 hours of video streaming on one charge.

WHAT'S IN THE BOX

- 1 Parent unit
- 2 Baby Unit
- 3 AC adapters
- Quick start guide



Image: The complete VTech VM819-2 system, including the parent unit and two baby units.

PRODUCT FEATURES

- **Best-in-class Battery Life and Range:** With up to 19 hours of video streaming, this 2-camera system lets you monitor your children throughout the night easily. With up to 1000 feet of range, you can stay connected with your children from another room or even from the yard.
- **Privacy Guaranteed. No Wi-Fi or App Pairing:** Trusted by US families for more than 3 decades, each VTech monitor is transmitted via secured internal 2.4GHz channel with FHSS technology, so you can rest assured that you're the only one who can hear and see your baby.
- **2.8" Display with Temperature Indication:** Clearly see every little move right from the parent unit. Besides, the built-in temperature sensor on the camera will send alert to the parent unit. Let you know when it's time to adjust the thermostat.
- **Two Viewing Options:** Choose how you want to keep an eye on your family - single view or patrol model (single view that transitions to a different camera every 10 seconds).
- **Soothing Lullabies and 2-Way Talk:** Gently lull your baby to sleep with 2 calming melodies and 2 sets of ambient sound. The 2-way talk back lets your baby to hear the sound of your voice no matter where you are.

- **Auto-on Screen and Sound Indications:** The screen can be turn off and the sound be muted to let you the silence needed and to save power. When baby is crying, the screen will auto turn on with a visual alert on the sound indicator bar on the parent unit.
- **Easy Set-up Plug & Play:** The parent unit and the two cameras are configured for monitoring right out of the box - no pairing or connections required. The cameras can be set on desk top or wall mounted.
- **Temperature Sensor:** The built-in temperature sensor on the baby camera will send alert to the parent unit. Lets you know when it's time to adjust the thermostat.

Product Key Features



Image: Visual representation of the product's key features.

All-day Monitoring Made Easy



19 Hours
in screen-on mode

29 Hours
in audio-only mode

Image: Battery life details for screen-on and audio-only modes.

SETUP

Charging the Parent Unit

Before initial use, charge the parent unit battery for 12 hours. When the battery is fully charged, the battery icon becomes solid. The parent unit can operate on battery power or AC power. The baby unit(s) must be connected to AC power.

Connecting the Baby Unit(s)

Connect the small plug of the power adapter to the baby unit and the large plug to a wall outlet. Use only the adapters supplied with this product. The baby unit will power on automatically.

Positioning the Camera

Place the baby unit in a location that provides a clear view of your baby. Ensure the baby unit is out of reach of your baby. The camera features an adjustable angle for optimal viewing.

Adjustable Camera Angle



Image: The baby unit camera offers adjustable pan and tilt for flexible positioning.

Light and Compact



Image: The parent unit is light and compact, designed for easy portability.

OPERATING INSTRUCTIONS

Power On/Off

To power on the parent unit, press and hold the POWER button. To power off, press and hold the POWER button again.

Adjusting Volume

Press the VOL+ or VOL- buttons on the parent unit to adjust the listening volume.

Two-Way Talk

Press and hold the TALK button on the parent unit to speak to your baby through the baby unit. Release the button to hear your baby again.

Two-way Talk-back Intercom



Image: The two-way talk-back intercom allows you to soothe your baby from another room.

Switching Between Cameras

If you have two baby units, press the CAM button on the parent unit to switch between Camera 1 and Camera 2. You can also activate Patrol mode to automatically cycle through cameras every 10 seconds.

Night Vision

The baby unit has infrared LEDs that allow you to see your baby clearly in the dark. When the baby unit detects low light levels, the night vision feature will automatically activate.

Lullabies and Soothing Sounds

Access the menu on the parent unit to select from 2 calming melodies and 2 sets of ambient sounds to help soothe your baby to sleep.

Soothing Sounds and Lullabies



Image: The baby unit can play soothing sounds and lullabies to comfort your child.

Temperature Monitoring

The baby unit includes a temperature sensor that displays the nursery temperature on the parent unit's LCD screen. An alert will be sent if the temperature goes outside a preset range.

Temperature Sensor



Image: The parent unit displays the nursery temperature for continuous monitoring.

VOX (Sound-Activated Screen Mode)

In VOX mode, the parent unit screen turns off to save power. When sound is detected above a certain level from the baby unit, the screen will automatically turn on and provide a visual alert on the sound indicator bar.

Privacy Guaranteed



No Wi-Fi



No App



Image: The monitor operates on a secure, private connection without Wi-Fi or apps.

Up to 1000 Feet of Range



Image: The monitor offers an extended range of up to 1000 feet for flexible monitoring.

MAINTENANCE

Cleaning

Clean the baby monitor units with a slightly damp cloth. Do not use cleaning sprays or liquid cleaners. Ensure units are dry before use.

Battery Care

To maintain optimal battery life, fully charge the parent unit before first use and whenever the low battery indicator appears. Avoid extreme temperatures.

TROUBLESHOOTING

Issue	Solution
-------	----------

Issue	Solution
No Link / Out of Range	Ensure baby unit is powered on and within range (up to 1000ft). Move parent unit closer to baby unit. Avoid large metal objects or other electronic devices that may cause interference.
No Picture / Black Screen	Check if the baby unit is powered on. Ensure the parent unit battery is charged. If in VOX mode, make a sound near the baby unit to activate the screen.
Sound Issues (Static, Echo, No Sound)	Adjust the volume on the parent unit. Move the parent unit closer to the baby unit. Ensure no other devices are causing interference.
Poor Night Vision Quality	Ensure the baby unit's lens is clean. Check for any obstructions blocking the infrared LEDs.
Parent Unit Battery Drains Quickly	Ensure the parent unit is fully charged before use. Reduce screen brightness. Use VOX mode to turn off the screen when quiet.

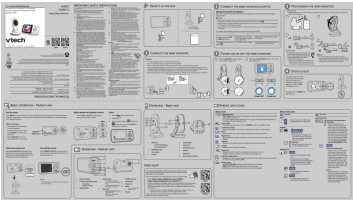
SPECIFICATIONS

Feature	Detail
Model Name	VM819-2
Screen Size	2.8 Inches
Connectivity Technology	Wireless (2.4GHZ FHSS)
Number of Cameras	2
Range	Up to 1000 feet
Battery Life (Video Streaming)	Up to 19 hours
Battery Life (Audio Only)	Up to 29 hours
Night Vision	Automatic Infrared
Two-Way Audio	Yes
Temperature Sensor	Yes
Lullabies	Yes (2 melodies, 2 ambient sounds)
VOX Mode	Yes (Sound-Activated Screen)
Mounting Type	Desktop or Wall Mount
Color	White
Dimensions (L x W x H)	4.9 x 1.24 x 2.8 inches
Item Weight	1.39 pounds
UPC	735078051004

WARRANTY AND SUPPORT

For detailed warranty information and further support, please refer to the official VTech website or the included Quick Start Guide. You can also download the full User Guide in PDF format: [VTech VM819-2 User Guide \(PDF\)](#) Visit the VTech Store for more products and information:[VTech Baby Monitors Store](#)

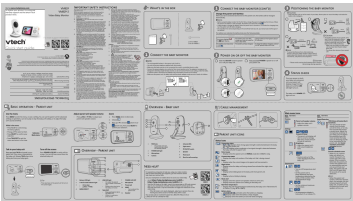
Documents - VTech – VM819-2



[VTech VM819 Video Baby Monitor Quick Start Guide](#)

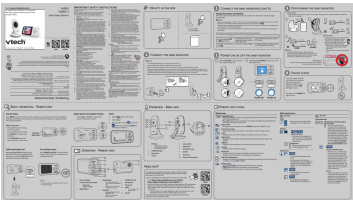
This guide provides instructions for setting up and using the VTech VM819 and VM819-2 Video Baby Monitors, including connecting, powering on/off, basic operations, and troubleshooting.

lang:en score:43 filesize: 7.27 M page_count: 2 document date: 2021-01-20



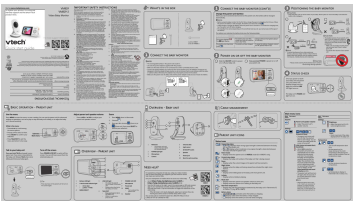
[\[pdf\] Quick Start Guide Specifications Guide Warranty](#)

VTech VM819 2 Video Baby Monitor with 19 Hour Battery Life Cameras 1000ft Long Range Auto Night Vision 8 Screen Way Audio Talk Temperature Sensor Power Saving Mode and Lullabies VM819 User Guide B09RQK3RSZ B08V8RWP3W B095SB7F4P C1114KCXcL m media amazon images I ||| CONFORMS TO UL STD. 62368-1 CERTIFIED TO CSA STD. C22.2 NO.62368-1 Crystal controlled PLL synthesiz ... Frequency control Transmit frequency Channels LCD Nominal effective range Power requirements VM819 **VM819-2** Video Baby Monitor For more support information S m VM819 **VM819-2** Important safety instr...



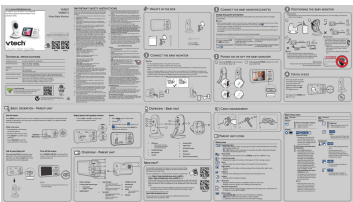
[\[pdf\] User Manual Quick Start Guide Specifications Guide Warranty](#)

User Manual VTech Telecommunications Ltd 80 2365 00 EW780 EW780236500 CONFORMS TO UL STD. 62368-1 CERTIFIED TO CSA STD. C22.2 NO.62368-1 Crystal controlled PLL synthesiz ... Frequency control Transmit frequency Channels LCD Nominal effective range Power requirements VM819 **VM819-2** Video Baby Monitor For more support information S m VM819 **VM819-2** Important safety instr...



[\[pdf\] User Manual Quick Start Guide Specifications Warranty](#)

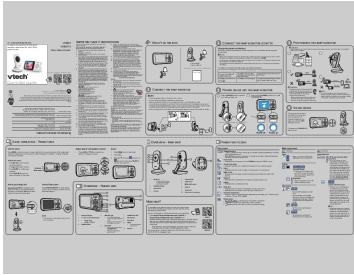
User Manual VTech Telecommunications Ltd 80 2365 00A EW780 EW780236500A 00a 5025192 CONFORMS TO UL STD. 62368-1 CERTIFIED TO CSA STD. C22.2 NO.62368-1 Crystal controlled PLL s ... Frequency control Transmit frequency Channels LCD Nominal effective range Power requirements VM819 **VM819-2** Video Baby Monitor For more support information S m VM819 **VM819-2** Important safety instr...



[VTech VM819 Video Baby Monitor Quick Start Guide](#)

This guide provides quick start instructions for the VTech VM819 Video Baby Monitor, including setup, operation, features, and troubleshooting.

lang:en score:32 filesize: 5.81 M page_count: 2 document date: 2025-03-31

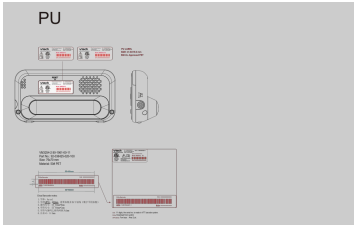


[pdf] User Manual Quick Start Guide Guide Warranty

VM819 X QSG V1 20210120 hwng User Manual VTech Telecommunications Ltd 80 2366 00 EW780

EW780236600

CONFORMS TO UL STD. 62368-1 CERTIFIED TO CSA STD. C22.2 NO.62368-1
Crystal controlled PLL synthesiz ... Frequency control Transmit frequency Channels
LCD Nominal effective range Power requirements VM819 **VM819-2** Video Baby
Monitor For more support information S m VM819 **VM819-2** Important safety inst...
lang:en score:31 filesize: 1.83 M page_count: 2 document date: 2021-01-20

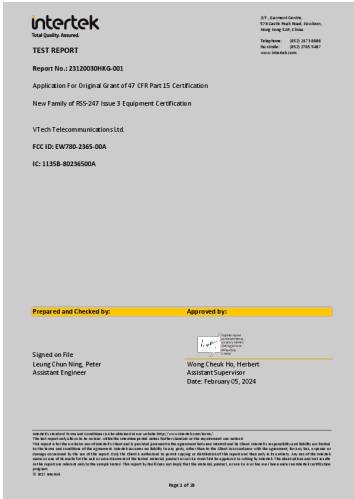


[pdf] Label

VM3254 series Label 20231212 Artwork and Location VTech Telecommunications Ltd 80 1960 01D

EW780 EW780196001D 01d

PU MANUFACTURED IN CHINA VTech Customer Service 1-800-595-9511
www.vtechphones.com IC: 1135B-8019 ... 595-9511 www.vtechphones.com IC:
1135B-80196001D FCC ID: EW780-1960-01D HVIN: 35-201916PUB Model: **VM819-2**
PU A/V I.C.T.E. SN:XXXXXXXXXXXX PU LABEL SIZE: 41.6X15.6 mm 50# UL
Approved PET MANUFACTU...
lang:en score:23 filesize: 1.64 M page_count: 2 document date: 2024-02-14



[pdf] Test Report

Date of Type wtcheung Intertek Testing Services Test Report VTech Telecommunications Ltd 80 2365

00A EW780 EW780236500A 00a

TEST REPORT Report No.: 23120030HKG-001 Application For Original Grant of 47
CFR Part 15 Certificati ... , Liaobu, Dongguan, Guangdong, China. FCC Part 15,
October 1, 2022 Edition EW780-2365-00A VM819 BU, **VM819-2** BU, VM819-ab BU,
VM3252 BU, VM3252-2 BU, VM350 BU, VM350-2 BU RSS-247 Issue 3, August 2023
R...
lang:en score:23 filesize: 1.25 M page_count: 29 document date: 2024-08-20

November 12, 2020

To whom it may concern,

Multiple Models Confirmation Letter-BU

I, the undersigned, hereby confirm that the family models are listed in the following table.

These models are identical as follows:

- ☐ Electronics/electrical designs, including software & firmware
☐ Construction design/Physical design/Enclosure
☐ PCB layout
☐ (Others, please specify) _____

The only differences between these models are the follows for marketing purposes:

- ☒ Color
☐ Cosmetic details
☐ Trade name
☒ Model Number
☒ (Others, please specify)

Model VM3256-ab BU/ VM319-ab BU is identical to model VM350-ab BU except for model designation and appearance.

- ☒ Suffix ("الم") represents
☐ Color code
☐ Packing configuration
☒ Others, please specify:
- Any alphanumeric character or blank is presenting number of baby unit

any alphanumeric character or blank is presenting number of baby unit
h = any alphanumeric character or blank is presenting color of enclosure.

For the product subject to authorization under FCC Declaration of Conformity
In addition, it is to confirm that all the below information:

- 1) the U.S. responsible party,
 - 2) FCC label artworks and location,
 - 3) FCC required statement in the user manual
- are the same but different in the following mod-

Item No.	New model	Model Number	Trade Name	Remarks
1	YES	VME100 BLU	each	1 baby unit
2	YES	VME100 BLU	each	2 baby unit
3	YES	VME200 BLU	each	1 baby unit
4	YES	VME200 BLU	each	1 baby unit
5	YES	VME200 BLU	each	2 baby unit
6	YES	VME200 BLU	each	1 baby unit
7	YES	VME100 BLU	each	1 baby unit
8	YES	VME100 BLU	each	2 baby unit
9	YES	VME100 BLU	each	1 baby unit

The sample being submitted to Bay Area Compliance Labs Corp.(Shenzhen) for conformity assessment is YM350 BL(test model) of the above list.
All above model's FCC ID is EW780-1383-09, IC is 1135B-80136309.

Regards,

Leand Tied

Michael Tsui
Approval Supervisor

[\[pdf\]](#) User Manual Decleration of Conformity Label

c1083 Product Similarity Declaration VTech Telecommunications Ltd 80 1383 09 Video Baby Monitor
EW780 EW780138309

VTech Telecommunications Ltd November 12, 2020 To whom it may concern,
Multiple Models Confirmati ... S YES YES Model Number VM350 BU VM350-2 BU
VM350-ab BU VM3256 BU VM3256-2 BU VM3256-ab BU VM819 BU **VM819-2** BU
VM819-ab BU Trade Name vtech vtech vtech vtech vtech vtech vtech vtech vtech 1
baby uni...

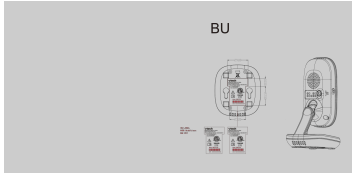
lang:en score:22 filesize: 67.72 K page_count: 1 document date: 2020-11-30

[\[pdf\]](#) Label

VM320 US ENGRAVING R3 02Jul2020 Label Artwork and Location VTech Telecommunications Ltd 80
2365 00 EW780 EW780236500

BU MANUFACTURED IN CHINA www.vtechphones.com VTech Customer Service 1-800-595-9511 FCC ID: EW780-23 ... vice 1-800-595-9511 FCC ID: EW780-2365-00
IC: 1135B-80236500 HVIN: 35-201931BU A/V I.C.T.E. Model: **VM819-2** BU S/N: XXXXXXXXXXXX A/V I.C.T.E. Model: VM819 BU S/N: XXXXXXXXXXXX BU
MANUFACTURED IN CHI...

lang:de score:22 filesize: 1.64 M page_count: 2 document date: 2022-09-08



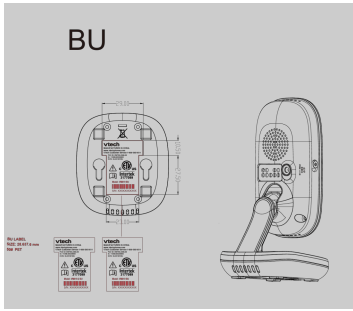
[\[pdf\]](#) Test Report

Date of Type wtcheung Intertek Testing Services Test Report VTech Telecommunications Ltd 80 1960
01D EW780 EW780196001D 01d

TEST REPORT Report No.: 23120041HKG-002 Application For Original Grant of 47
CFR Part 15 Certificati ... gdong, China. FCC Part 15, October 1, 2022 Edition
EW780-1960-01D VM3254 PU, VM3254-2 PU, VM819 PU, **VM819-2** PU RSS-247
Issue 3, February 2017 RSS-Gen Issue 5 Amendment 2, February 2021 1135B-
80196001D...

lang:en score:22 filesize: 1.37 M page_count: 29 document date: 2024-04-17

[illegible]

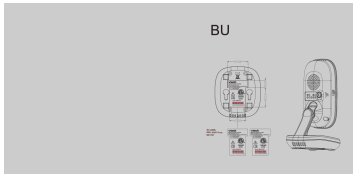


[\[pdf\]](#) Label

VM320 US ENGRAVING R3 02Jul2020 Label Artwork and Location VTech Telecommunications Ltd 80 2366 00 EW780 EW780236600

BU MANUFACTURED IN CHINA www.vtechphones.com VTech Customer Service 1-800-595-9511 FCC ID: EW780-23 ... Customer Service 1-800-595-9511 FCC ID: EW780-2366-00 IC: 1135B-80236600 HVIN: 35-201801BU Model: **VM819-2** BU S/N: XXXXXXXXXXXX Model: VM819 BU S/N: XXXXXXXXXXXX ...

lang:es **score:22** filesize: 1.06 M page_count: 1 document date: 2022-01-07

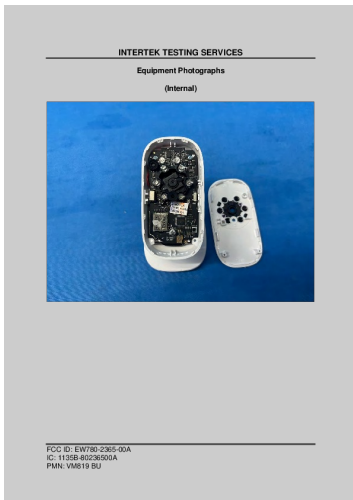


[\[pdf\]](#) Label

VM819 09 Engraving Label 20231211 Artwork and Location VTech Telecommunications Ltd 80 2365 00A EW780 EW780236500A 00a

BU MANUFACTURED IN CHINA www.vtechphones.com VTech Customer Service 1-800-595-9511 FCC ID: EW780-23 ... 5B-80236500A HVIN: 35-201931BUB A/V I.C.T.E. Model: VM819 BU S/N: XXXXXXXXXXXX A/V I.C.T.E. Model: **VM819-2** BU S/N: XXXXXXXXXXXX VM3252 Series Engraving draft_R0 BU MANUFACTURED IN CHINA www.vtechph...

lang:de **score:22** filesize: 2.68 M page_count: 3 document date: 2024-05-21



[\[pdf\]](#) Product Photos Teardown

Applicant Name user Intertek Testing Services Internal Photos VTech Telecommunications Ltd 80 2365 00A EW780 EW780236500A 00a

INTERTEK TESTING SERVICES Equipment Photographs Internal FCC ID: EW780-2365-00A IC: 1135B-80236500 ... K TESTING SERVICES Equipment Photographs Internal FCC ID: EW780-2365-00A IC: 1135B-80236500A PMN: **VM819-2** BU INTERTEK TESTING SERVICES Equipment Photographs Internal FCC ID: EW780-2365-00A IC: 1...

lang:i-klngon **score:18** filesize: 1.47 M page_count: 78 document date: 2024-06-07

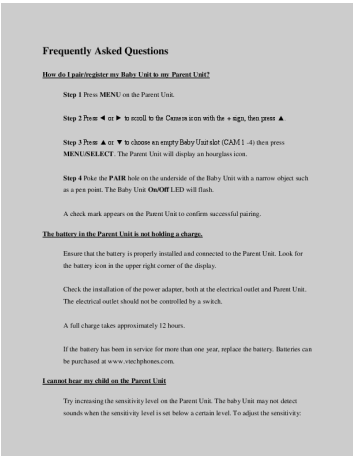


[pdf] Product Photos

Applicant Name user Intertek Testing Services External Photos VTech Telecommunications Ltd 80 2365 00A EW780 EW780236500A 00a

INTERTEK TESTING SERVICES Equipment Photographs External FCC ID: EW780-2365-00A IC: 1135B-80236500 ... K TESTING SERVICES Equipment Photographs External FCC ID: EW780-2365-00A IC: 1135B-80236500A PMN: **VM819-2** BU INTERTEK TESTING SERVICES Equipment Photographs External FCC ID: EW780-2365-00A IC: 1...

lang:i-klnglon **score:16** filesize: 1.08 M page_count: 15 document date: 2024-06-07



[pdf] Frequently Asked Questions

M Sharmila VTech VM819 2 Video Baby Monitor with 19 Hour Battery Life Cameras 1000ft Long Range Auto Night Vision 8 Screen Way Audio Talk Temperature Sensor Power Saving Mode and Lullabies VM819 FAQ B09RQK3RSZ B08V8RWP3W B095SB7F4P 71IMZchWMhL m media amazon images I ||| Frequently Asked Questions How do I pair/register my Baby Unit to my Parent Unit Step 1 Press MENU on the Parent Unit. Step 2 Press or to scroll to the Camera icon with the sign, then press . Step 3 Press or to choose an empty Baby Unit slot CAM 1 - 4 then press MENU/SELECT. The Parent Unit ...

lang:en **score:15** filesize: 138.85 K page_count: 5 document date: 2022-12-10



[pdf] Test Report

Microsoft Word RSZ201020002A FCC Part 15 247 RSS Report BU ok SZ18116 Test VTech Telecommunications Ltd 80 1383 09 Video Baby Monitor EW780 EW780138309

FCC PART 15.247 RSS-GEN ISSUE 5, MARCH 2019 AMENDMENT 1 RSS-247, ISSUE 2, FEBRUARY 2017 TEST REPORT ... ideo Baby Monitor VM350 BU VM350-2 BU, VM350-ab BU, VM3256 BU, VM3256-2 BU, VM3256-ab BU, VM819 BU, **VM819-2** BU, VM819-ab BU a=any alphanumeric character or blank is presenting number of baby unit; b ...

lang:en **score:11** filesize: 1.1 M page_count: 45 document date: 2020-11-25