

Avantree Audiplex

Avantree Audiplex Wireless Audio Transmitter & Multiple Receivers Set User Manual

Brand: Avantree | Model: Audiplex

1. PRODUCT OVERVIEW & FEATURES

The Avantree Audiplex is a wireless audio system designed to transmit audio from a single source to multiple receivers simultaneously. It offers low-latency audio transmission and individual volume control for each connected receiver, making it suitable for various listening environments.

- **Scalable System:** Connect up to 100 receivers to a single transmitter, ideal for group listening scenarios.
- **Universal Compatibility:** The transmitter supports audio input via AUX or optical jacks, connecting to devices like TVs, AV receivers, projectors, and PA systems. Receivers utilize 3.5mm AUX jacks for compatibility with most headphones and speakers.
- **Ultra-Low Latency:** Utilizes 2.4Ghz technology to reduce audio lag to approximately 30ms, significantly lower than standard Bluetooth.
- **Individual Volume Control:** Each receiver features built-in volume controls, allowing users to adjust their personal listening level independently.
- **Extended Stable Range:** Provides a stable and reliable wireless connection up to 100 ft (30m).

2. PACKAGE CONTENTS

The Avantree Audiplex set includes the following items:

- Transmitter (x1)
- Receiver (x3)
- USB A to Type C Charging Cable (1.5M/5FT) (x1)
- 3-in-1 USB A to Type C Charging Cable (60CM/2FT) (x1)
- Optical Audio Cable (1.5M/5FT) (x1)
- AUX 3.5mm Audio Cable (1.5M/5FT) (x1)
- AUX 3.5mm to RCA Audio Cable (35CM/1FT) (x1)
- Wired Earbuds (75CM/2.5FT) (x3)
- Attachment Clip (x3)

BOX CONTENTS

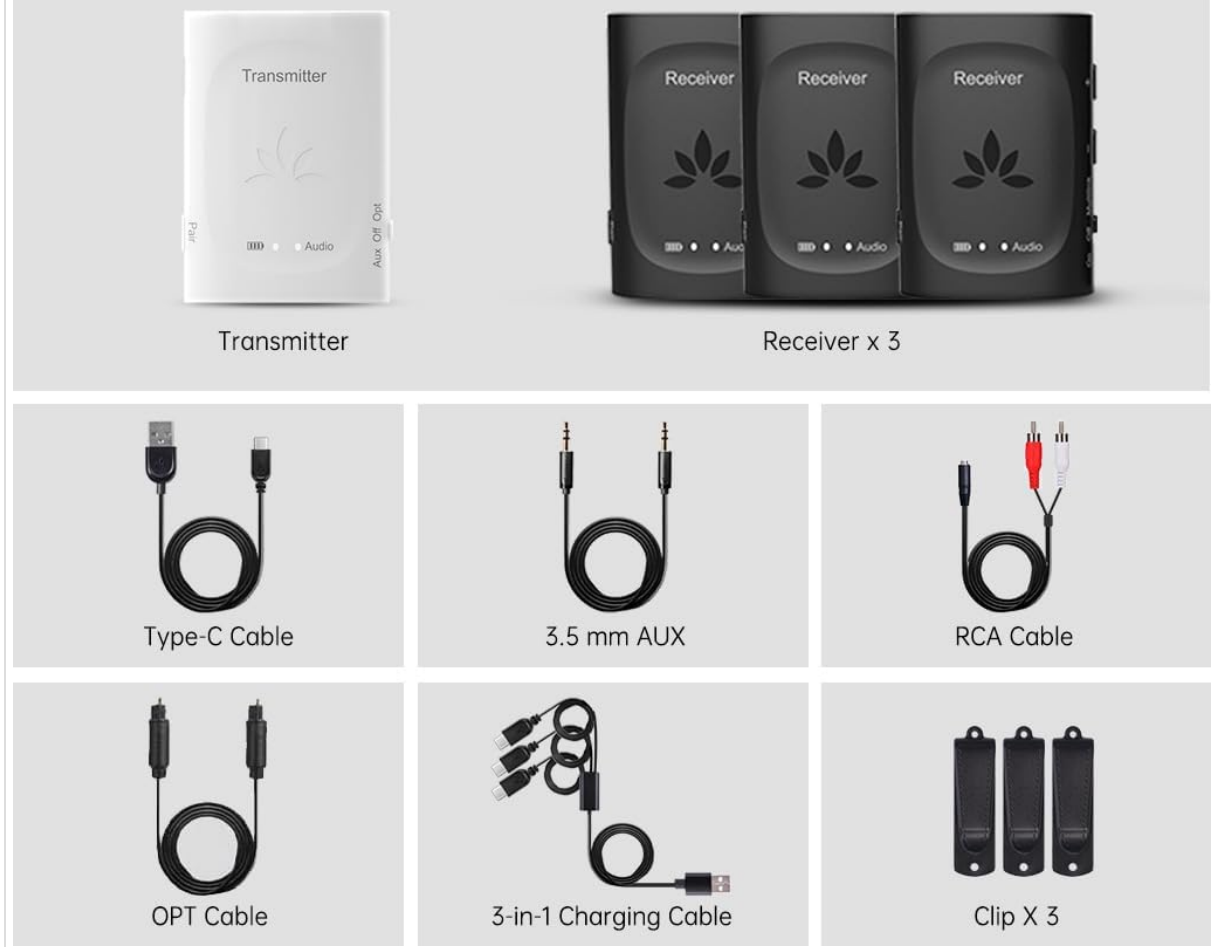


Figure 2.1: Visual representation of all items included in the Avantree Audiplex package.

The image above displays the complete contents of the Avantree Audiplex package, including the transmitter, three receivers, various audio cables, charging cables, wired earbuds, and attachment clips.

3. SETUP INSTRUCTIONS

3.1 Transmitter Connection

Connect the Audiplex transmitter to your audio source (e.g., TV, AV receiver, projector) using one of the provided audio cables. The transmitter supports both optical and AUX inputs.



Figure 3.1: The Avantree Audiplex transmitter connected to a television, illustrating a typical setup for audio transmission.

This image shows the transmitter connected to a TV, ready to broadcast audio. Ensure the correct audio output from your TV is selected.

3.2 Receiver Connection

Connect your headphones or speakers to the Audiplex receivers using the 3.5mm AUX jack. The receivers are designed to be portable and can be used with the included wired earbuds or your preferred 3.5mm audio devices.



Figure 3.2: The Audiplex system demonstrating connections from the transmitter to multiple receivers, which are then connected to headphones and speakers.

The diagram illustrates the wireless connection from the central transmitter to three individual receivers, each connected to a different listening device (speakers, wired earbuds, headphones).

3.3 Pairing Transmitter and Receivers

The transmitter and receivers are typically pre-paired from the factory. If re-pairing is needed:

1. Ensure both the transmitter and receivers are powered on.
2. Press and hold the 'Pair' button on the transmitter until its LED indicator flashes.
3. Press and hold the 'Pair' button on each receiver until its LED indicator flashes.
4. The devices will automatically connect. A solid blue LED on both the transmitter and receivers indicates a successful connection.



Figure 3.3: Close-up of the transmitter's pairing button, essential for establishing wireless connections with receivers.

This image highlights the pairing button on the transmitter, which is used to initiate the connection process with the receivers.



Figure 3.4: The transmitter and a receiver during the pairing process, indicated by flashing lights.

The image shows the transmitter and a receiver side-by-side, with their respective pairing lights indicating they are in pairing mode.

4. OPERATING INSTRUCTIONS

4.1 Mode Selection (TX/RX)

The Audiplex system operates primarily in Transmitter (TX) mode, sending audio from a source to receivers. The receivers are always in Receive (RX) mode.

4.2 Volume Control

Each Audiplex receiver has dedicated volume buttons (+/-) to allow individual users to adjust their listening volume without affecting others.

4.3 Bypass Mode

The Audiplex transmitter features a bypass mode, allowing a wired audio connection to pass through the device while simultaneously transmitting wirelessly. This means you can have your soundbar or external speakers connected directly to the transmitter, and still use the wireless receivers.

Important Note: For bypass mode to function correctly, the input and output audio cable types must match (e.g., AUX in to AUX out, Optical in to Optical out).

5. MAINTENANCE

5.1 Charging

Use the provided USB Type-C charging cables to charge the receivers. The transmitter requires continuous power via its USB Type-C port to operate.

5.2 General Care

Keep the device dry and clean. Avoid exposing it to extreme temperatures or direct sunlight. Clean with a soft, dry cloth. Do not use liquid cleaners.

6. TROUBLESHOOTING

6.1 No Audio / Connection Issues

- Ensure all audio cables are securely connected to both the audio source and the transmitter.
- Verify the transmitter is powered on and its LED is solid blue, indicating a successful connection to receivers.
- Check that receivers are powered on and connected to your headphones/speakers.
- Confirm the audio output settings on your TV or audio source are correctly configured for the chosen cable type (e.g., Optical Out, AUX Out).
- If using optical, ensure your TV's audio format is set to PCM and Dolby is turned off.

6.2 Latency Concerns

The Audiplex system is designed for ultra-low latency (30ms). If you experience noticeable delay, ensure all connections are secure and there are no other strong 2.4GHz wireless signals interfering in the immediate vicinity.

6.3 Range Limitations

While the system offers a 100 ft range, physical obstacles like thick walls or metal structures can reduce effective range. Try to minimize obstructions between the transmitter and receivers.

6.4 Transmitter Power

The transmitter does not have a built-in battery and requires continuous power via its USB Type-C port to function. Ensure it is always plugged into a reliable power source.

7. SPECIFICATIONS

Product Dimensions	4.49 x 2.95 x 1.18 inches
Item Weight	11.2 ounces (318 Grams)
Connectivity Technology	Wireless (2.4Ghz)
Compatible Devices	Optical / AUX Devices – TVs, mixers, laptops, microphones
Connector Type	AUX or Optical
Audio Output Mode	Stereo
Surround Sound Channel Configuration	2 Channel
Special Feature	Audio bitrate/sampling rate: 16bit/48khz
Batteries	4 Lithium Polymer batteries required (included for receivers)

8. OFFICIAL PRODUCT VIDEOS

8.1 Avantree Multiple Wireless Transmitter & Receiver Set

Your browser does not support the video tag.

This video provides an overview of the Avantree Multiple Wireless Transmitter & Receiver Set, demonstrating its core

functionalities and components. It highlights how the system allows multiple users to listen to a single audio source wirelessly.

8.2 Avantree Audiplex Multiple Wireless Transmitter Receiver Set

Your browser does not support the video tag.

This video showcases the Avantree Audiplex Multiple Wireless Transmitter Receiver Set, detailing its features and ease of use for various applications, including home entertainment and assistive listening.

9. WARRANTY & SUPPORT

For warranty information, technical support, or further assistance, please visit the official Avantree website or contact their customer service. Details can typically be found in the product packaging or on the Avantree support page.