

VIKYLIN PTZ-4825-IS2

VIKYLIN 4K 8MP PTZ Outdoor Camera (Model PTZ-4825-IS2) Instruction Manual

Your comprehensive guide to installation, operation, and maintenance.

[Setup](#)

[Operation](#)

[Maintenance](#)

[Troubleshooting](#)

[Specifications](#)

[Warranty & Support](#)

1. SETUP AND INSTALLATION

1.1 What's in the Box

Before beginning installation, please verify that all components are present:

- 1 x 8MP PTZ Camera
- 1 x Quick Start Guide
- 1 x DC 12V Power Adapter
- 1 x Mounting Bracket
- Lifetime Technical Support Information

1.2 Physical Installation

The VIKYLIN PTZ camera is designed for outdoor use and can be wall-mounted. Ensure the mounting location provides a clear field of view and is within reach of power and network connections.



Figure 1: VIKYLIN 4K 8MP PTZ Outdoor Camera (Model PTZ-4825-IS2)

The camera supports Power over Ethernet (PoE), allowing both power and data transmission through a single Ethernet cable. If your router or switch does not support PoE, use the included DC 12V power adapter.

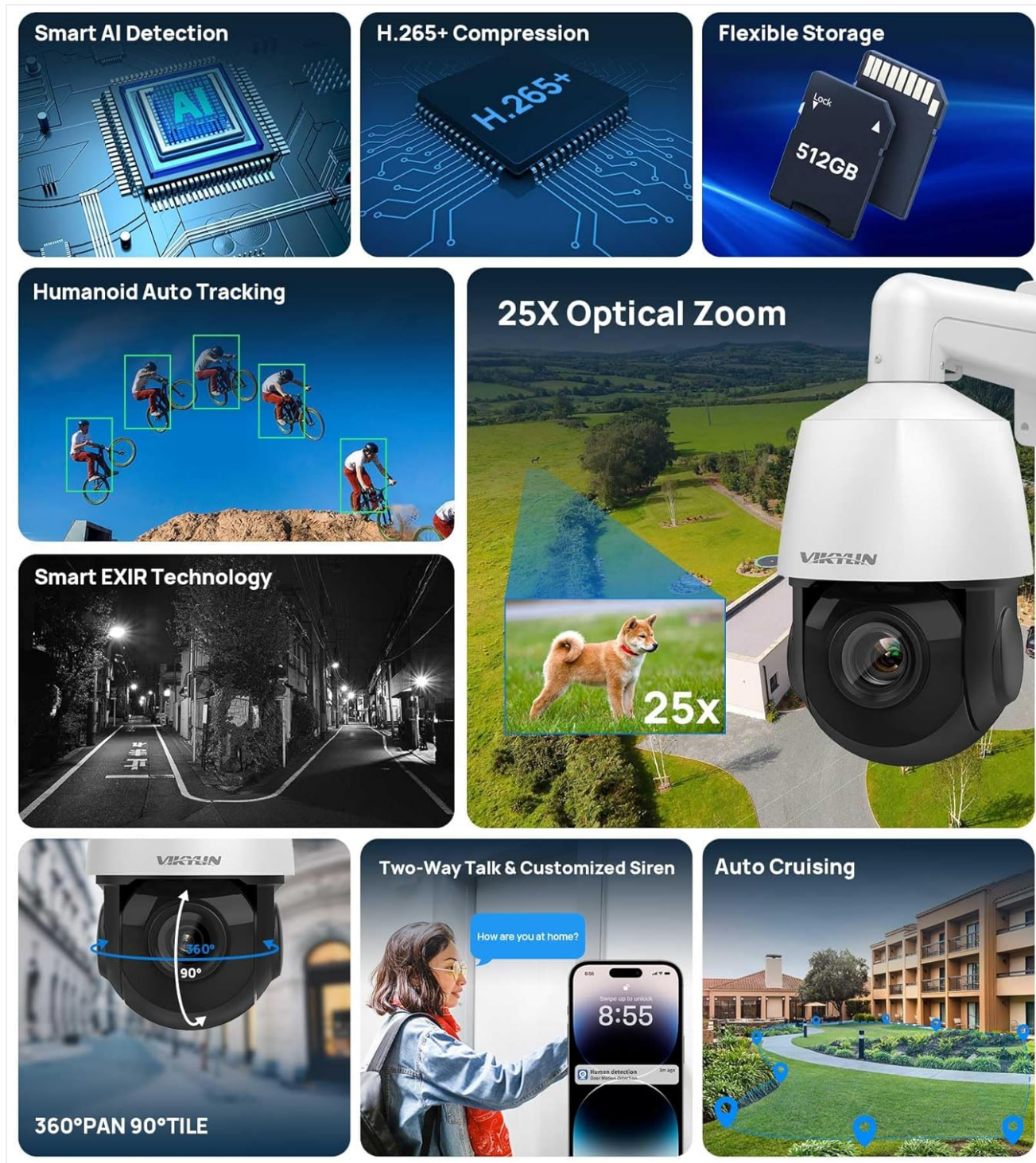


Figure 2: Overview of VIKYLIN PTZ Camera and its connection cables.

1.3 Network and Initial Web Interface Configuration

This video demonstrates the process of connecting the camera to your network and configuring its basic settings via a computer's web interface. It covers connecting the camera to a router or switch, finding the camera's IP address, modifying network settings, and accessing various camera functions.

Video 1: Guide to connecting the camera to a computer and configuring settings via the web interface. This includes network setup, IP address modification, and various camera function adjustments.

Key steps covered in the video:

1. Connect the camera to a router or network switch using an Ethernet cable.
2. Connect the router/switch to your computer.
3. Install the AjDevTools configuration software on your computer.

4. Open the software to find the camera's IP address.
5. Access your computer's Network and Internet settings to view its IPv4 Address and Gateway.
6. Modify the camera's IP address to be on the same network segment as your computer, ensuring no IP conflicts.
7. Enter the camera's web login interface using a web browser. The default username is 'admin' and the default password is '123456'.
8. Download and install any required browser plugins for full functionality.
9. Adjust camera image basic parameters, video parameters (Encode Mode, Resolution, FPS, Video Quality, Bit Rate), and audio settings.
10. Configure TCP/IP settings and P2P functions for remote access.
11. Enable and set up Motion Detection, including scheduling and defining detection areas.
12. Manage user accounts and modify the camera's date and time settings.
13. Perform firmware upgrades and configure auto-maintenance settings.

1.4 Mobile Application Setup

The camera can be easily added to your mobile phone via the Videolink APP. This allows for real-time video viewing, playback, snapshots, and motion alerts. You can also share real-time video with others.



Figure 3: The Videolink APP interface showing controls for pan-tilt, zoom, focus, IRIS, and two-way talk.

2. OPERATING INSTRUCTIONS

2.1 Pan, Tilt, and Zoom (PTZ) Control

The camera offers extensive movement capabilities with 0° to 360° pan and 0° to 90° tilt. Its 25x optical zoom (4.4mm-110mm motorized lens) allows you to view distant objects in detail without compromising image quality.

Video 2: Demonstration of the camera's pan, tilt, and 18x optical zoom capabilities, controlled via a mobile application.



25X
OPTICAL ZOOM

360° Pan+ / 90° Tilt

Built in 4.4mm to 110mm varifocal lens auto focus zoom remote control the camera with pan/tilt/zoom through your phone or computer by any time any where

Figure 4: Illustrates the 25x optical zoom feature, showing a clear view of a distant object.

2.2 Auto-Tracking and Human/Vehicle Detection

The camera features professional auto-tracking and human/vehicle detection. When a person or vehicle enters the monitored area, the camera automatically tracks their movement and sends real-time video or snapshots to your mobile device. Detection areas and sensitivity can be adjusted to minimize false alarms.

Video 3: Shows the camera's human detection and auto-tracking functionality, following a person walking with a dog.

Video 4: Demonstrates the camera's auto-tracking of humanoid figures in a parking area.



Figure 5: The camera's auto-tracking feature detecting and following human figures, with mobile push notifications shown.



Figure 6: Display of human and vehicle detection, showing how the camera identifies and alerts for specific targets.

2.3 Two-Way Audio

Equipped with a built-in microphone and speakers, the camera supports two-way audio communication. This allows for real-time conversations with visitors or the ability to issue audible warnings to intruders directly through the camera.

Video 6: Demonstrates the two-way audio feature, showing a conversation between a person at the camera and someone viewing through the app.

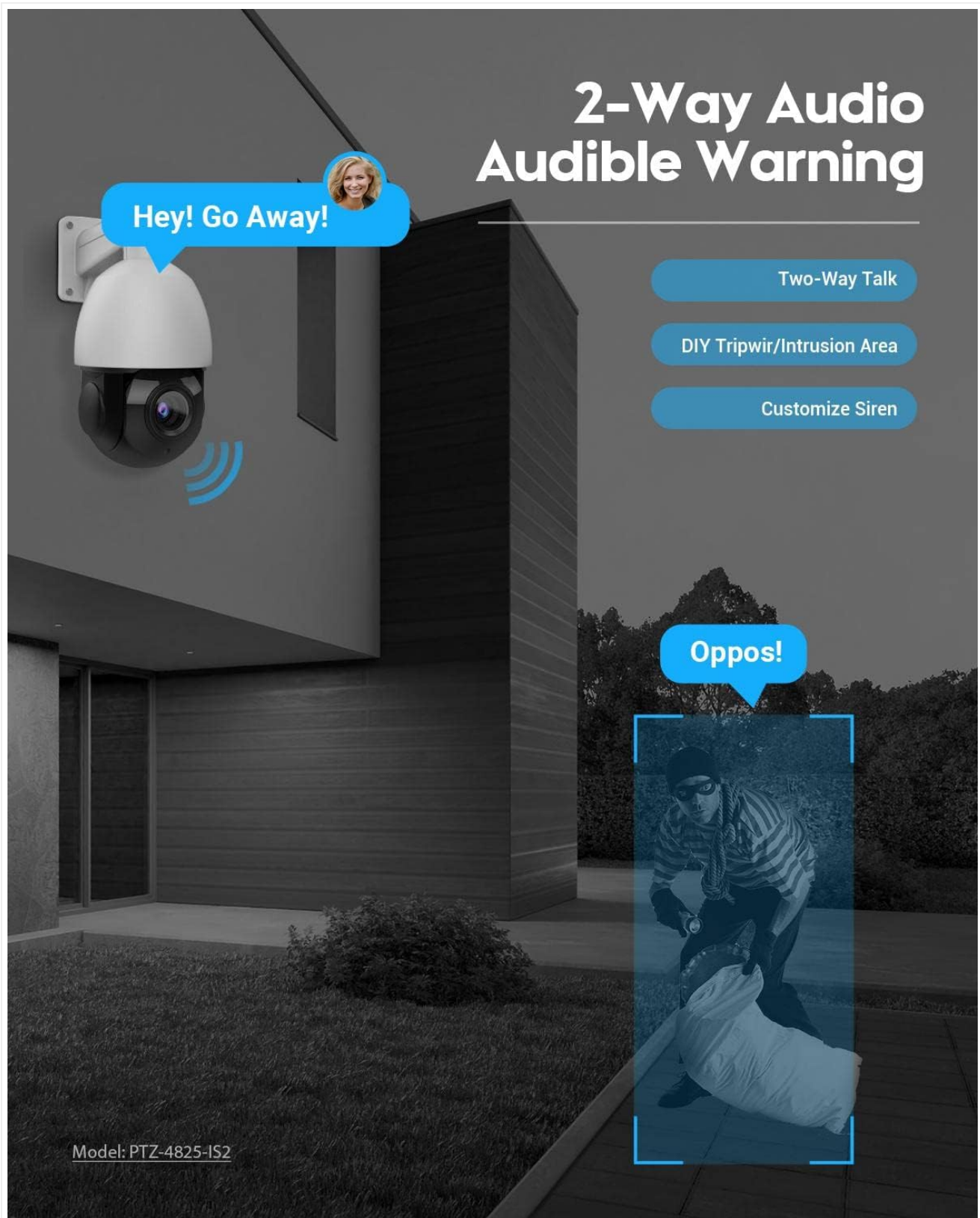


Figure 7: Illustration of the two-way audio feature, including audible warnings and customizable siren options.

2.4 Night Vision

The camera is equipped with 8 IR LEDs, providing up to 328ft (100 meters) of ultra-long night vision distance. This ensures clear image capture in low light or complete darkness.

Video 7: Shows the camera's IR night vision capability, providing clear footage in dark conditions up to 165ft.



Figure 8: Depicts the camera's 328ft IR night vision in a dark street environment.

2.5 Auto Cruise

Configure up to 8 groups of cruising routes, with each route supporting up to 16 preset positions. The camera will cyclically check these preset positions, providing continuous surveillance of your property.

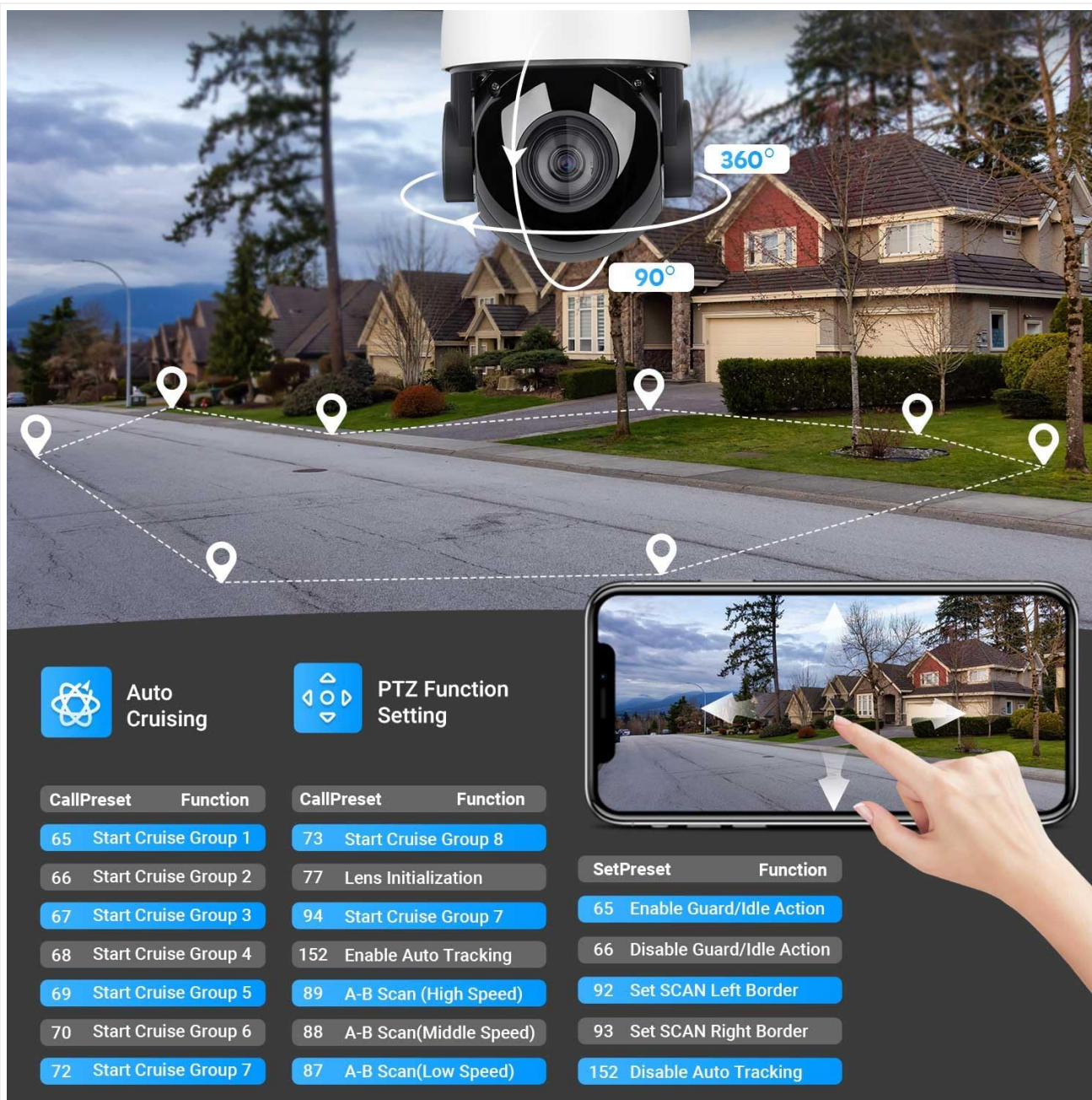


Figure 9: Illustrates the auto cruising feature with multiple preset points and PTZ function settings.

2.6 Recording Options

The camera supports multiple recording options without additional monthly fees. It can record to a Micro SD card (up to 512GB, not included), work with a PoE NVR (such as VIKYLIN NVR ASIN: B0DKXFQYQJ), or utilize FTP for storage.



Figure 10: Details various recording options including Micro SD card, Blueiris, FTP, and Synology NAS compatibility.

3. MAINTENANCE

3.1 Weather Resistance

The camera is certified with an IP66 protection rating, indicating its resistance to dust and water immersion. It is designed to operate reliably in various outdoor weather conditions, with a wide operating temperature range.

Video 8: Shows the camera's IP66 waterproof rating, demonstrating its ability to withstand water exposure.



Figure 11: Highlights the IP66 protection rating, indicating suitability for outdoor environments with temperature resilience.

3.2 Firmware Updates and Auto Maintenance

Regular firmware updates ensure optimal performance and access to new features. The camera's web interface allows for easy firmware upgrades and configuration of auto-maintenance schedules. Refer to Section 1.3 for detailed steps on accessing and navigating the web interface for these settings.

4. TROUBLESHOOTING

- **Network Connectivity Issues:** If the camera is not connecting to the network, ensure the Ethernet cable is

securely connected and that your router/switch is functioning correctly. Verify the camera's IP address is on the same network segment as your computer, as detailed in Section 1.3.

- **Mobile App Connection Problems:** If you are unable to connect via the Videolink APP, check your P2P settings in the web interface (Section 1.3) to ensure it is enabled and the QR code is correctly scanned. Ensure your mobile device has a stable internet connection.
- **Motion Detection Not Triggering:** Review the motion detection settings in the web interface (Section 1.3). Confirm that motion detection is enabled, the detection area is correctly defined, and sensitivity/thresholds are appropriately set.
- **Image Quality Issues:** Check the camera's image and video parameters in the web interface (Section 1.3) to ensure resolution, frame rate, and quality settings are optimized for your network and storage capacity.
- **No Audio or Poor Audio Quality:** Verify audio settings in the web interface (Section 1.3), ensuring audio input/output volumes are correctly adjusted and the audio encode type is suitable.
- **General Performance Issues:** Consider performing a factory reset via the web interface (Section 1.3) if persistent issues occur. Always back up configurations before a reset. Ensure the camera's firmware is up to date.

For further assistance, please visit the [VIKYLIN Official Store](#) or contact customer support.

5. SPECIFICATIONS

Feature	Detail
Model Number	VK-GK4825 PTZ (PTZ-4825-IS2)
Resolution	8MP (4K) @ 20fps, 4MP @ 30fps
Image Sensor	1/2.8" Progressive Scan CMOS
Optical Zoom	25x (4.4-110mm Motorized Lens)
Digital Zoom	30x
Pan Range	0° to 360°
Tilt Range	0° to 90°
Night Vision Range	Up to 328ft (100m) with 8 IR LEDs
Audio	Built-in Microphone and Speakers (Two-Way Audio)
Detection	AI Human/Vehicle Detection, Auto Tracking
Connectivity	PoE (802.3af), Ethernet, ONVIF, RTSP
Storage	Micro SD Card (up to 512GB), NVR, FTP
Weather Resistance	IP66 Waterproof
Power Source	12V DC or PoE
Material	Metal
Dimensions	10 x 6.5 x 6.5 inches
Weight	4.3 pounds



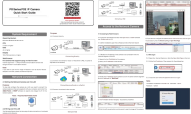
6. WARRANTY AND SUPPORT

VIKYLIN is committed to providing reliable security solutions. This product includes:

- **2-Year Limited Warranty:** Covers manufacturing defects and malfunctions under normal use.
- **30-Day Money-Back Guarantee:** Allows for returns within 30 days of purchase for a full refund.
- **Lifetime Technical Support:** Access to expert assistance for any questions or issues you may encounter.

For warranty claims, technical support, or additional product information, please visit the [VIKYLIN Official Store on Amazon](#) or refer to the contact information provided in your product packaging.

Related Documents - PTZ-4825-IS2

	<p>Vikylin POE Security Camera System Quick Start Guide - Setup & Configuration</p> <p>This guide provides essential information for setting up and configuring the Vikylin POE Security Camera System, including network connection, accessing cameras, general configurations, and troubleshooting. Learn to install and manage your HD recorder and IP cameras effectively.</p>
	<p>Setting Up Face Recognition on IP PTZ Cameras</p> <p>A step-by-step guide to configuring face recognition features on IP PTZ cameras, including installation, AI function selection, and face detection settings.</p>
	<p>VIKYLIN PG Series IP Camera Quick Start Guide</p> <p>A quick start guide for setting up and accessing VIKYLIN PG Series IP Cameras, covering system requirements, network connection, web login, and mobile app setup.</p>
	<p>VIKYLIN VK Series POE Security Camera System Quick Start Guide</p> <p>Quick Start Guide for the VIKYLIN VK Series POE Security Camera System. Learn how to set up, connect, and access your IP cameras and NVR. Includes system requirements, network configuration, access methods, and frequently asked questions.</p>
	<p>VIKYLIN VK-12S-Pro: User Guide for Local and Cloud Management</p> <p>Guide for VIKYLIN VK-12S-Pro device management. Covers local client software installation, cloud platform access, default credentials, and touch screen login.</p>

pg of card installation and storage



[VIKYLIN SD Card Installation and Storage Guide](#)

Step-by-step guide for installing and managing SD card storage on VIKYLIN cameras, covering formatting, scheduled recording, and event-triggered recording based on motion detection.