

Manuals+

[Q & A](#) | [Deep Search](#) | [Upload](#)

manuals.plus /

> [LG](#) /

> [LG OLED65C1PUB 65 Inch 4K Smart OLED TV User Manual](#)

LG OLED65C1PUB

LG OLED65C1PUB 65 Inch 4K Smart OLED TV User Manual

Model: OLED65C1PUB

INTRODUCTION

This manual provides comprehensive instructions for the setup, operation, and maintenance of your LG OLED65C1PUB 65 Inch 4K Smart OLED TV. Please read this manual thoroughly before using your television to ensure proper and safe operation. Keep this manual for future reference.

The LG OLED65C1PUB features a self-luminous display technology that delivers exceptional picture quality with perfect blacks and accurate colors. Powered by the a9 Gen 4 AI Processor 4K, it enhances both picture and sound. This TV is designed for an immersive viewing experience, supporting advanced gaming features like G-SYNC Compatible, FreeSync, VRR, and ALLM, and integrating webOS with ThinQ AI for smart functionality.

PACKAGE CONTENTS

Before proceeding with the setup, ensure all components are present in the box:

- LG OLED65C1PUB 65 Inch 4K Smart OLED TV
- Magic Remote Control
- TV Stand Components
- Power Cable
- User Manual (this document)
- E-Manual (digital version accessible via TV)



Image: Front view of the LG OLED65C1PUB 65-inch 4K Smart OLED TV, showcasing its slim design and vibrant display.

SETUP

1. Assembling the Stand

Carefully place the TV screen-down on a soft, flat surface to prevent damage. Attach the stand components to the TV using the provided screws. Ensure the stand is securely fastened before lifting the TV.



Image: Angled view of the LG OLED TV, illustrating the attached stand and thin profile.

2. Connecting Peripherals

Connect your external devices such as cable boxes, Blu-ray players, gaming consoles, and sound systems to the appropriate ports on the back of the TV. The LG OLED65C1PUB features multiple HDMI ports (including HDMI 2.1 for 4K@120Hz support), USB ports, and an Ethernet port for wired internet connection.

- **HDMI:** For high-definition video and audio.
- **USB:** For connecting USB storage devices.
- **Ethernet (LAN):** For wired internet connection.
- **Optical Digital Audio Out:** For connecting to a soundbar or audio receiver.



Image: Rear view of the LG OLED TV, showing the various input and output ports for connecting external devices.

3. Power Connection

Plug the power cable into the TV's power input and then into a wall outlet. The TV will enter standby mode.

4. Initial Setup Wizard

Upon first power-on, the TV will guide you through an initial setup wizard. This includes:

1. Language selection.
2. Network connection (Wi-Fi or wired Ethernet).
3. Tuning channels (if using an antenna/cable).
4. Accepting terms and conditions.
5. Setting up the Magic Remote.

OPERATING THE TV

Magic Remote Control

The LG Magic Remote allows for intuitive control of your TV. It features a point-and-click interface, voice control, and a scroll wheel.

- **Pointing:** Point the remote at the screen to move the cursor.
- **Clicking:** Press the scroll wheel (OK button) to select items.
- **Voice Recognition:** Press and hold the microphone button to use voice commands for searching content or controlling the TV.
- **Scroll Wheel:** Use to scroll through menus or zoom in/out.



Image: Illustration of the LG Magic Remote highlighting its key interactive features like pointing, clicking, and voice control.

Smart Features (webOS & ThinQ AI)

Your LG OLED TV runs on webOS, providing a user-friendly interface for accessing apps, streaming services, and connected devices. ThinQ AI integrates voice assistants for smart home control and personalized recommendations.

- **Home Dashboard:** Access all connected devices and smart home appliances.
- **App Store:** Download and install various streaming and utility applications.
- **AI Picture Pro/Sound Pro:** The a9 Gen 4 AI Processor automatically optimizes picture and sound settings based on content type.

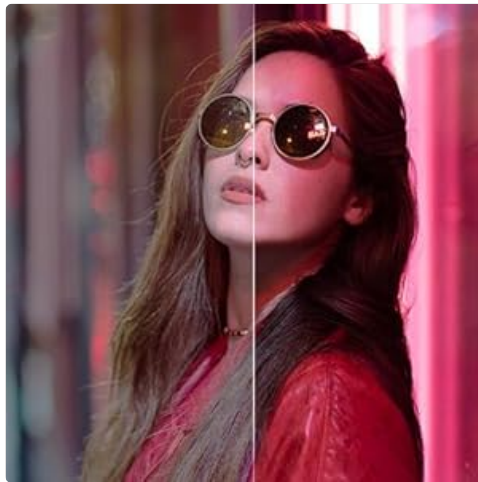


Image: Split screen demonstrating the visual enhancement capabilities of AI Picture Pro, showing improved color and clarity.

Gaming Features

The LG OLED65C1PUB is equipped with advanced gaming features for an optimized experience:

- **G-SYNC Compatible & FreeSync:** Reduces screen tearing and stuttering for smoother gameplay.
- **VRR (Variable Refresh Rate):** Synchronizes the TV's refresh rate with the game's frame rate.
- **ALLM (Auto Low Latency Mode):** Automatically switches the TV to a low-latency mode when a game console is detected.
- **Game Optimizer:** A dedicated menu for adjusting gaming-specific settings, including genre optimization, black stabilizer, and white stabilizer.

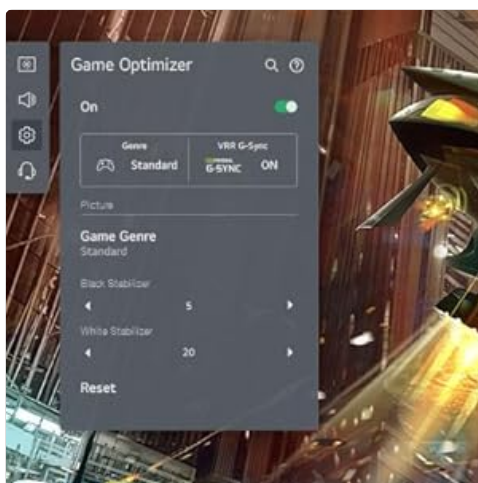


Image: Screenshot of the Game Optimizer menu on the LG TV, showing options for genre, VRR, G-Sync, and picture adjustments like Black Stabilizer.

MAINTENANCE

Proper care will extend the life of your LG OLED TV.

- **Screen Cleaning:** Gently wipe the screen with a soft, dry microfiber cloth. For stubborn marks, slightly dampen the cloth with distilled water. Avoid using harsh chemicals, alcohol, or abrasive cleaners.
- **Frame Cleaning:** Use a soft, dry cloth to clean the TV frame.
- **Ventilation:** Ensure adequate airflow around the TV. Do not block ventilation openings.
- **Power Off:** When not in use for extended periods, unplug the TV from the power outlet.

TROUBLESHOOTING

If you encounter issues with your TV, refer to the following common problems and solutions:

Problem	Possible Cause / Solution
No Power	Check if the power cable is securely plugged into the TV and the wall outlet. Test the outlet with another device.
No Picture / Sound	Verify the correct input source is selected. Check cable connections to external devices. Restart connected devices.
Remote Control Not Working	Replace the batteries. Ensure there are no obstructions between the remote and the TV. Re-register the Magic Remote if necessary (refer to E-Manual).
Poor Picture Quality	Check the signal strength for broadcast channels. Adjust picture settings (brightness, contrast, sharpness). Ensure the source content is high quality.
Wi-Fi Connection Issues	Restart your router and modem. Ensure the TV is within range of your Wi-Fi network. Re-enter the Wi-Fi password.

For more detailed troubleshooting, refer to the E-Manual accessible directly on your TV or visit the LG support website.

SPECIFICATIONS

Feature	Detail
---------	--------

Feature	Detail
Brand	LG
Model Number	E94LGOLED65C1PUB
Screen Size	65 Inches
Display Technology	OLED
Resolution	4K (3840 x 2160)
Refresh Rate	120 Hz
Processor	a9 Gen 4 AI Processor 4K
Operating System	webOS Smart TV
Connectivity	Wi-Fi, Ethernet, HDMI, USB
Product Dimensions (D x W x H)	9.9"D x 57"W x 33.9"H (with stand)
Item Weight	25 Pounds
Color	Black

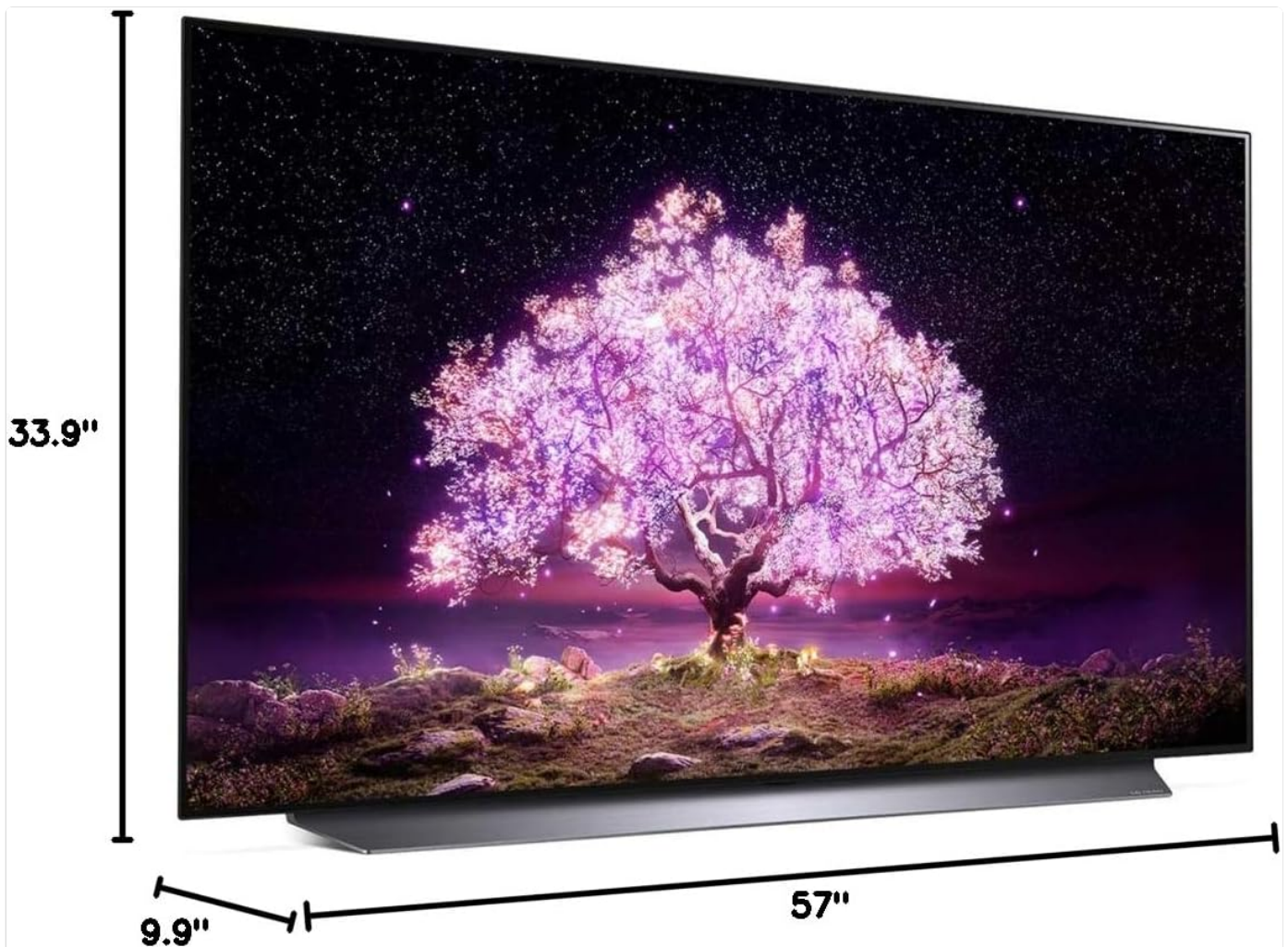


Image: Diagram illustrating the dimensions of the LG OLED TV, including width, height, and depth with the stand.

WARRANTY AND SUPPORT

Your LG OLED65C1PUB TV comes with a manufacturer's limited warranty. Additionally, this bundle includes a Premium 4 Year Extended Protection Plan. Please refer to the documentation provided with your purchase for specific terms and conditions of both the manufacturer's warranty and the extended protection plan.

For technical support, service, or warranty claims, please contact LG Customer Service. You can find contact information on the official LG website or in the E-Manual on your TV.

LG Customer Support: www.lg.com/us/support



Image: Packaging for the 4-Year Premium Protection Plan, indicating coverage for screen damage, cracked frames, and hardware faults.

© 2024 LG Electronics. All rights reserved.

Product specifications are subject to change without notice.