

[Manuals.plus](#) /

› [Dora dotey](#) /

› Doradotey Baby Playpen WL-003 Instruction Manual

Dora dotey WL-003

Doradotey Baby Playpen WL-003 Instruction Manual

Model: WL-003 | Brand: Dora dotey

1. INTRODUCTION

This manual provides essential instructions for the safe assembly, operation, maintenance, and care of your Doradotey Baby Playpen. Please read this manual thoroughly before use and retain it for future reference.

CPC

Children's Product Certification



cpc certificate



non-toxic



skin-friendly



washable

Image: The Doradotey Baby Playpen, shown in a living room setting with a baby and mother, highlighting its spacious design.

2. SAFETY INFORMATION

- Always supervise your child when they are in the playpen.
- Ensure all parts are correctly assembled and securely locked before placing a child inside.
- Do not leave children unattended.
- Keep the playpen away from open flames, heaters, and other heat sources.
- Do not use the playpen if any parts are broken, torn, or missing.
- The playpen materials are tested to ASTM F406 standards, confirming they are BPA-free, phthalate-free, and lead-free.
- Ensure the playpen is placed on a flat, stable surface.
- Do not modify the product in any way.



Image: Detailed view of the playpen's safety features, including the breathable mesh, secure locking mechanism, and robust pipe thickness.

3. PACKAGE CONTENTS

Your Doradotey Baby Playpen package includes:

- 8 Playpen Panels (with mesh and fabric covers)
- Connecting Joints (pre-attached to panels)
- Suction Cups (integrated into base)
- Assembly Tool (e.g., screwdriver for disassembly, if needed)

4. SETUP AND ASSEMBLY

The Doradotey Baby Playpen is designed for easy assembly without the need for additional tools. Follow these steps:

1. Unfold the panels: Lay out the folded panels on a clean, flat surface.
2. Connect the panels: Each panel has pre-attached connecting joints. Align the joints of adjacent panels and snap them together. Ensure the top and bottom connections are secure.
3. Form the desired shape: The playpen can be configured into various shapes (e.g., square, rectangle, octagon) by adjusting the angles of the connecting joints.
4. Secure the base: Press down firmly on the integrated suction cups at the base of each panel to secure the playpen to a smooth floor surface.

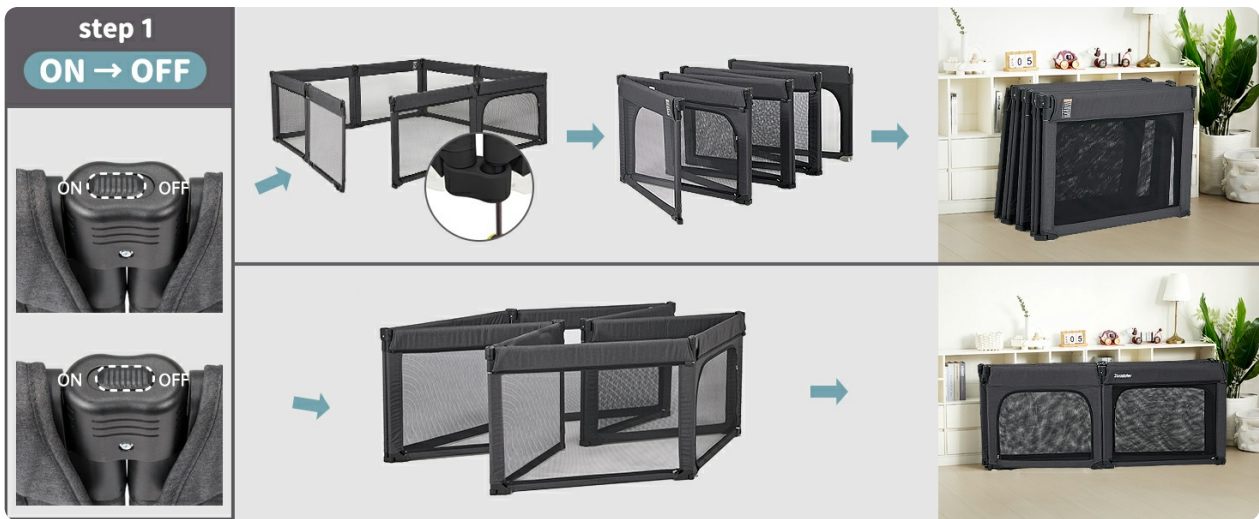


Image: Visual guide demonstrating the simple snap-together assembly process for the playpen panels.

Video: Assembly and Folding Demonstration

Your browser does not support the video tag.

Video: This video demonstrates the quick and easy setup and folding of the Doradotey Baby Playpen, showcasing its adjustable and user-friendly design.

5. OPERATING INSTRUCTIONS

The playpen provides a safe and spacious area for your child to play. Key features include:

- **360° Breathable Mesh:** The mesh panels allow for full visibility, enabling you to interact with your child and ensuring they feel comfortable and not enclosed.
- **Zipper Doors:** Two external zipper doors allow your child to enter and exit the playpen independently under adult supervision. Always ensure zippers are securely closed when the child is inside.
- **Adjustable Shape:** The unique design allows you to change the playpen's shape to fit your available space and furniture.



Image: Features of the playpen, including the breathable mesh for visibility, the scientifically determined safe height, and the convenient zipper door for access.

6. ADJUSTABLE FEATURES

The Doradotey Baby Playpen offers flexibility in configuration:

- **Shape Adjustment:** The connecting joints allow for various angles, enabling you to create square, rectangular, octagonal, or custom shapes to best suit your space.
- **Secure Locking:** Each joint features a simple switch to lock the panels in place, preventing accidental changes in shape during use.



Image: Examples of the playpen configured in different shapes to adapt to various home environments and furniture arrangements.

7. FOLDING AND STORAGE

The playpen is designed for convenient folding and storage:

1. Unlock the top dual-lockings on the connecting joints.
2. Fold the panels inward to collapse the playpen. This can be done in 1-2 minutes without disassembling all parts.
3. For compact storage, the playpen can be folded flat. If full disassembly is required, use the provided tool to disconnect the panels at the bottom joints.

Video: Folding the Playpen Without Disassembly

Your browser does not support the video tag.

Video: This video demonstrates how to fold the playpen for storage without needing to completely disassemble the panels, highlighting its convenience.

Video: Easy Panel Disassembly

Your browser does not support the video tag.

Video: This video illustrates the simple process of taking apart the playpen panels for more compact storage or transport.

8. CLEANING AND MAINTENANCE

The Doradotey playpen is made from stain-resistant Oxford fabric and cationic fabric for easy care:

- All 8 fabric covers are removable and washable.
- Individual panels can be removed for cleaning while the rest of the playpen remains assembled.

- Fabric can be wiped with soap and water or hand washed.
- Regularly check all connections and fabric for wear and tear.

9. SPECIFICATIONS

| Feature | Detail |
|-----------------------------|---|
| Product Dimensions | 79 x 71 x 27 inches |
| Item Model Number | WL-003 |
| Target Gender | Unisex |
| Material Type | Fabric, Metal, Plastic, Polyester |
| Care Instructions | Can Be Wiped With Soap, Washable Oxford Cloth, Hand Wash |
| Additional Product Features | Adjustable, Foldable, non-slip suction cups, tear-resistant, dirt-resistant |
| Number Of Items | 1 |
| Batteries Required | No |
| Folded Size (per panel) | 39.37x27in (35.43x27in) |
| Item Weight | 30 pounds |
| Floor Area | 38.75 Square Feet |
| Age Range (Description) | Baby/Infant/Toddler |

10. TROUBLESHOOTING

- **Playpen feels unstable:** Ensure all connecting joints are fully snapped into place and the suction cups at the base are firmly pressed onto a smooth, clean floor surface.
- **Difficulty folding/unfolding:** Check that the top dual-lockings on the joints are disengaged. For full disassembly, ensure the bottom joints are properly unlocked using the provided tool.
- **Fabric tearing:** Inspect the fabric regularly for signs of wear. Avoid sharp objects near the playpen. If a tear occurs, discontinue use and contact customer support.
- **Suction cups not holding:** Ensure the floor surface is clean, dry, and smooth. Suction cups may not adhere well to textured surfaces or carpets.

11. WARRANTY AND SUPPORT

For any questions, concerns, or support regarding your Doradotey Baby Playpen, please refer to your purchase documentation or contact Doradotey customer service directly. While specific warranty details are not provided in this manual, standard consumer rights apply. Keep your proof of purchase for any warranty claims.

You can visit the [Dora dotey Store](#) for more information.

