

Goliath Reaxion Xtreme Race

Goliath Reaxion Xtreme Race Instruction Manual

Model: Reaxion Xtreme Race (919421.004)

1. INTRODUCTION

The Goliath Reaxion Xtreme Race is an innovative STEM (Science, Technology, Engineering, Mathematics) building toy designed to inspire creativity and critical thinking through the construction of elaborate domino and chain reaction courses. This set allows users to build unique structures, create exciting stunts, and observe the principles of cause and effect in action. It is suitable for ages 7 and up.

2. SAFETY INFORMATION

- **Age Recommendation:** This product is intended for children aged 7 years and older.
- **Small Parts:** The set contains small parts which may pose a choking hazard for children under 3 years. Adult supervision is recommended.
- **Assembly:** Adult assistance may be required for initial setup or complex constructions.
- **Usage:** Use the product on a flat, stable surface to ensure proper operation of the domino effect.
- **Cleaning:** Refer to the Maintenance section for cleaning instructions.

3. PACKAGE CONTENTS

Carefully unpack all components and verify that all parts are present. The Reaxion Xtreme Race set includes the following:

- 250 Reaxion Tiles (various colors)
- 100 Connectors (Linx)
- 8 Wheels
- 4 Cubes
- 2 Loops

- 2 Ziplines
- 1 Splitter



Image 3.1: All components of the Reaxion Xtreme Race set, including tiles, connectors, wheels, cubes, loops, ziplines, and a splitter, laid out on a white surface.

4. SETUP INSTRUCTIONS

Follow these steps to begin building your Reaxion Xtreme Race course:

1. **Unpack Components:** Remove all parts from the packaging. It is recommended to sort the different types of components (tiles, connectors, special elements) for easier access during construction.
2. **Basic Tile Placement:** Reaxion tiles are designed to connect easily. Place the first tile on a flat, stable surface. Subsequent tiles can be connected side-by-side or stacked using the integrated connection points.
3. **Using Connectors (Linx):** The 100 Linx connectors allow for flexible connections between tiles, enabling turns, angles, and more complex structures. Simply snap the Linx into the designated slots on the tiles.

4. Integrating Special Elements:

- **Wheels and Cubes:** Attach wheels to cubes to create rolling elements or use cubes as stable bases for taller structures.
- **Loops:** Assemble the two loop sections and integrate them into your course. Ensure the entry and exit points align with your tile path for a smooth transition.
- **Ziplines:** Set up the zipline elements at elevated points in your course. Connect tiles to the zipline mechanism to allow them to travel down.
- **Splitter:** Position the splitter to divide a single domino path into two, creating branching reactions.

5. **Creative Construction:** Experiment with different arrangements and combinations of tiles and special elements. The back of the product box provides various example setups to inspire your designs.



Image 4.1: The back of the Reaxion Xtreme Race box, illustrating several creative setup examples and component interactions.

5. OPERATING INSTRUCTIONS

Once your Reaxion Xtreme Race course is built, initiating the chain reaction is simple:

1. **Initiate the Reaction:** Gently push the first Reaxion tile in your sequence. This will trigger a cascade, causing subsequent tiles to fall.

2. **Observe Element Interaction:** Watch how the falling tiles activate the special elements you've integrated:

- Tiles falling onto wheels will cause them to roll.
- Tiles entering loops will travel through them.
- Ziplines will carry tiles across gaps.
- The splitter will divert the reaction into two paths.

3. **Experiment and Refine:** If the reaction stops prematurely, identify the point of failure and adjust the placement or connection of the components. Experiment with different starting points and element configurations to achieve the desired effect.

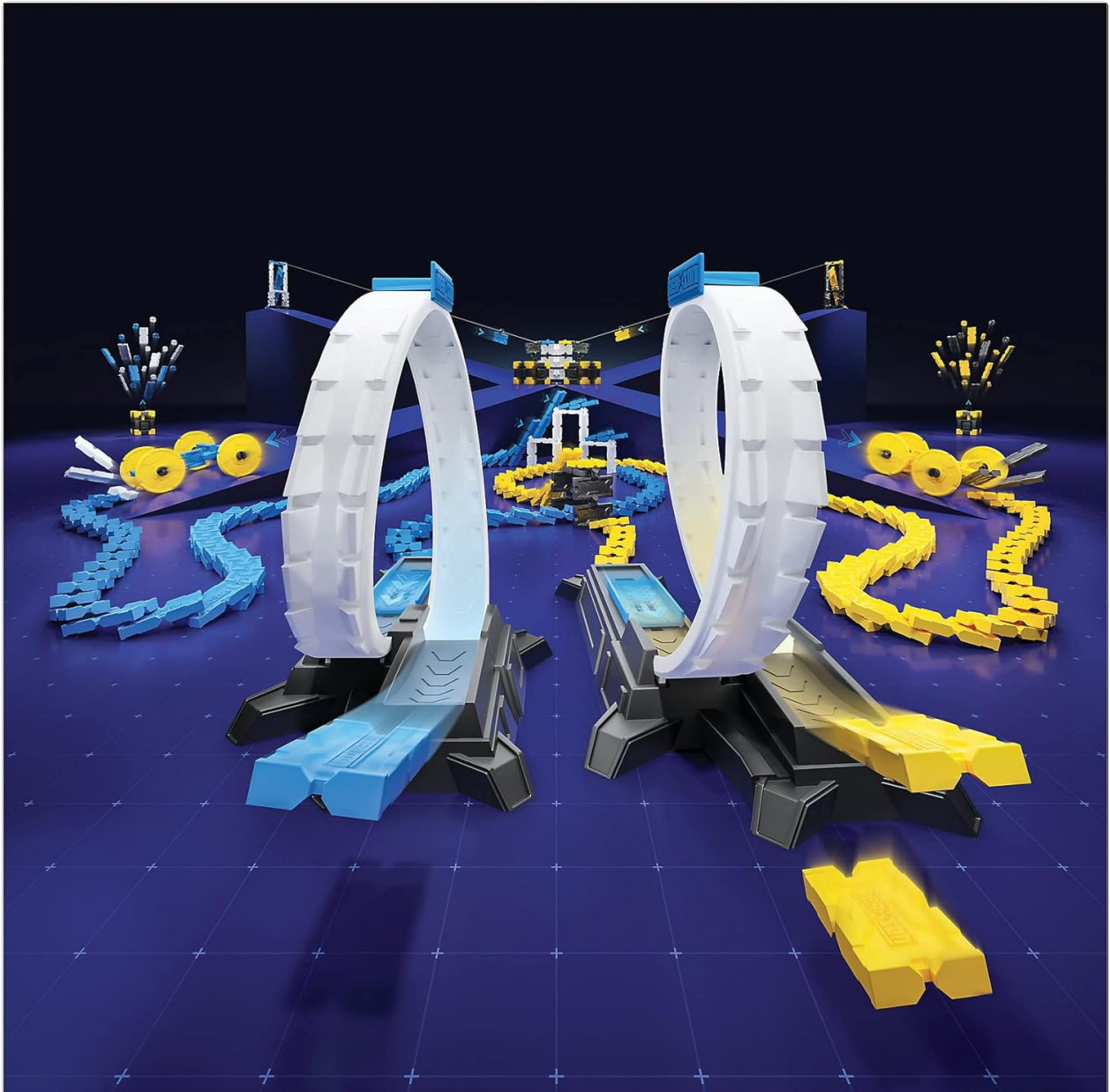


Image 5.1: An example Reaxion Xtreme Race setup featuring two large loops, multiple domino tile paths in blue and yellow, and other interactive elements, ready for activation.

6. MAINTENANCE

- **Cleaning:** To clean the Reaxion components, wipe them with a soft, damp cloth. Do not use harsh chemicals or abrasive cleaners. Ensure all parts are completely dry before storage.
- **Storage:** Store all components in their original box or a suitable container in a cool, dry place away from

direct sunlight to prevent damage or discoloration.

- **Inspection:** Periodically inspect all parts for wear or damage. Discard any broken or severely damaged components to prevent injury.

7. TROUBLESHOOTING

If you encounter issues with your Reaxion Xtreme Race set, consider the following:

- **Dominoes Not Falling Consistently:**
 - Ensure tiles are placed on a perfectly flat and stable surface. Uneven surfaces can disrupt the chain reaction.
 - Check the spacing between tiles. If they are too far apart, the falling tile may not reach the next one. If too close, they may not fall properly.
 - Verify that tiles are standing upright and are not leaning.
- **Special Elements Not Activating:**
 - Confirm that the tiles leading into and out of elements like loops, ziplines, or the splitter are correctly aligned and positioned to make contact.
 - Ensure there are no obstructions preventing the movement of wheels, ziplines, or other moving parts.
- **Difficulty Connecting Parts:**
 - Apply gentle, firm pressure when connecting tiles and Linx. They are designed to fit snugly.
 - If a part seems unusually difficult to connect, check for any debris or manufacturing imperfections.

8. SPECIFICATIONS

Feature	Detail
Brand	Goliath
Model Name	Reaxion Xtreme Race
Model Number	919421.004
Age Range (Manufacturer)	7 years and up
Number of Players	1+
Material	Artificial (Plastic)
Included Components	250 Reaxion tiles, 100 connectors, 8 wheels, 4 cubes, 2 loops, 2 ziplines, 1 splitter
Educational Objective	STEM
Item Weight	2.01 Kilograms
Item Dimensions (L x W x H)	35 x 35 x 9 centimeters

9. WARRANTY INFORMATION

Goliath products are manufactured to high-quality standards. For specific warranty details, please refer to the information provided on the product packaging or contact Goliath customer support directly. Keep your proof of purchase for any warranty claims.

10. SUPPORT

For further assistance, questions, or to provide feedback, please visit the official Goliath website or contact their customer service department. You can find contact information on the product packaging or at GoliathGames.com.