

[Manuals.plus](#) /

> [Metty Metal](#) /

> Metty Metal White 2 Step Handrail Instruction Manual

Metty Metal Q350

Metty Metal White 2 Step Handrail Instruction Manual

Model: Q350

1. PRODUCT OVERVIEW

The Metty Metal White 2 Step Handrail is designed to provide sturdy and reliable support for outdoor steps. Crafted from durable wrought iron with a powder-coated finish, this handrail enhances safety and accessibility for 1 or 2 steps. Its adjustable design allows for versatile installation to fit various step angles without the need for cutting.

This handrail is suitable for a variety of applications, including front porches, balconies, gardens, and walkways, offering a safe and stylish solution for both residential and commercial use.





Image 1.1: The Metty Metal White 2 Step Handrail providing support on outdoor steps.

2. SAFETY INFORMATION

- Always ensure all fasteners are securely tightened before use.
- Regularly inspect the handrail for any signs of wear, damage, or loose connections.
- This handrail is designed to support a maximum weight of 600 pounds. Do not exceed this limit.
- Installation should be performed on a stable and appropriate surface (concrete, brick, wood, marble).
- If you are unsure about any installation step, consult a qualified professional.

3. PACKAGE CONTENTS

Verify that all components are present before beginning installation:

- 1 x Metty Metal White 2 Step Handrail (Wrought Iron)
- Installation Hardware Kit (includes wrench, screws, and anchors for various surfaces)
- Detailed Installation Guide

4. INSTALLATION GUIDE

The Metty Metal handrail is designed for easy installation. Follow these steps carefully:

4.1. Product Dimensions

Before installation, familiarize yourself with the handrail's dimensions to ensure it fits your steps correctly. The armrest length is approximately 26.7 inches, the overall height is 36 inches, and the center armrest is 13 inches.



Image 4.1: Handrail dimensions: 27" armrest, 13.5" center armrest, 36" height.

4.2. Applicable Floor Types

This handrail can be securely mounted on various floor types, including cement, brick, wooden, and marble surfaces. Ensure your chosen surface is structurally sound.

Applicable floor types

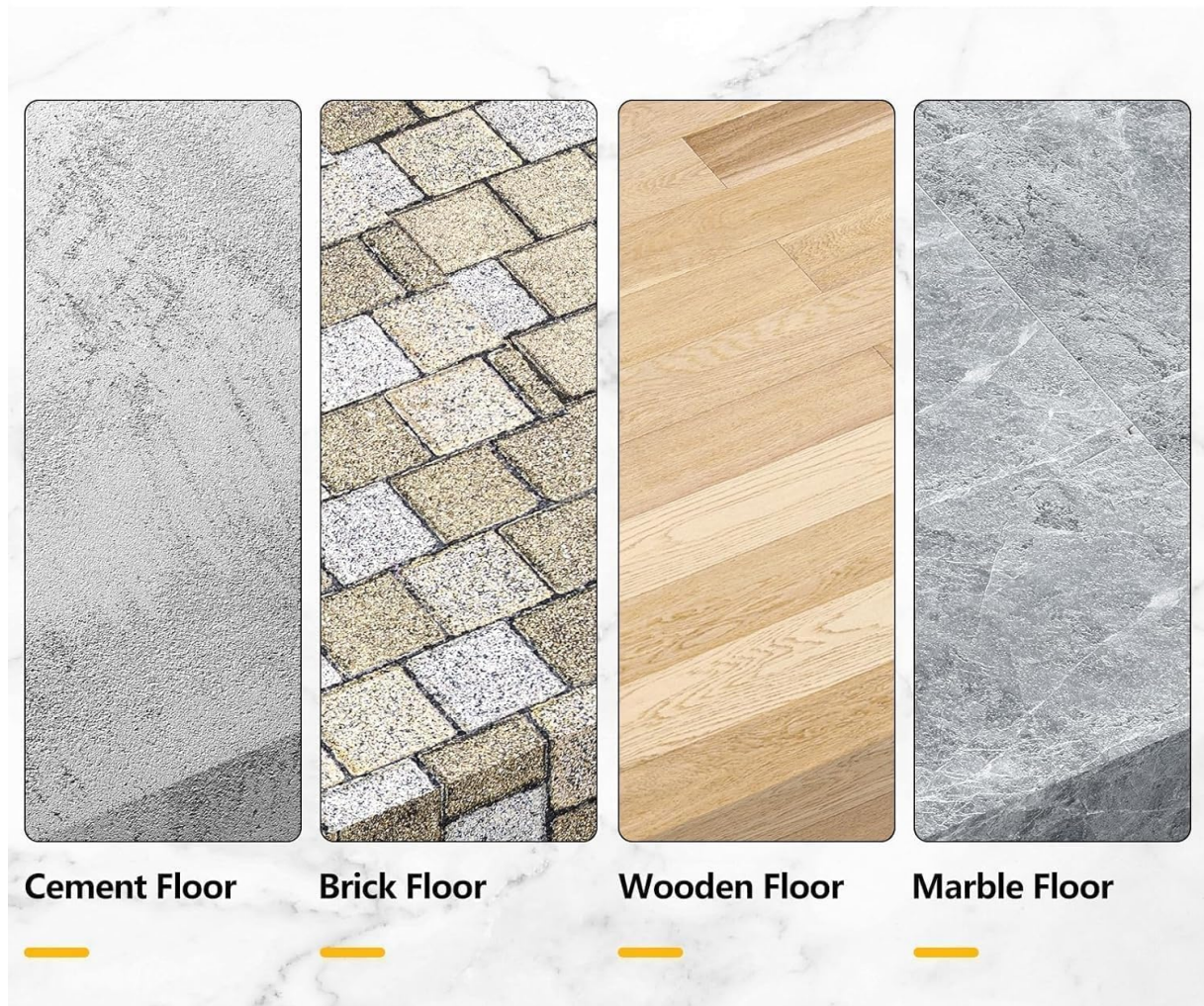


Image 4.2: Compatible floor types for installation.

4.3. Mounting on Concrete Steps

1. **Step 1: Mark Drilling Points.** Position the handrail base on the desired location on your concrete step. Use a pencil or marker to accurately mark the four drilling points through the base plate holes.
2. **Step 2: Drill Holes.** Using an appropriate drill bit for concrete (often a hammer drill is recommended), drill holes at the marked locations. Ensure the depth is sufficient for the provided anchors.
3. **Step 3: Insert Anchors and Secure.** Insert the expansion anchors into the drilled holes. Place the handrail base over the anchors and secure it firmly using the provided bolts and wrench.
4. **Step 4: Cover Base.** Once secured, place the decorative base covers over the mounting hardware for a clean finish.

Mounting on concrete



Installation on wooden floors



Image 4.3: Step-by-step guide for concrete mounting.

4.4. Installation on Wooden Floors

For wooden surfaces, the process is similar but uses wood screws instead of concrete anchors.

1. **Step 1: Mark and Drill Pilot Holes.** Position the handrail base and mark the drilling points. Drill pilot holes appropriate for the wood screws.
2. **Step 2: Secure with Screws.** Place the handrail base over the pilot holes and secure it using the provided wood screws.
3. **Step 3: Cover Base.** Attach the decorative base covers.

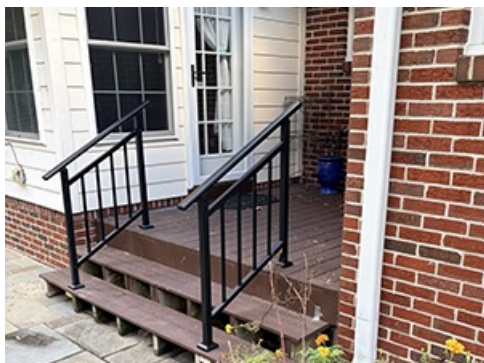


Image 4.4: Installation method for wooden floors.

4.5. Adjusting Handrail Angle

The handrail's angle can be adjusted to fit 1 or 2 steps. This flexibility ensures a proper fit without requiring modifications to the handrail itself. Loosen the adjustment bolts, set the desired angle, and re-tighten securely.



Image 4.5: Example of an installed handrail on a porch.

5. OPERATION

Once installed, the handrail provides a stable and comfortable grip for ascending and descending steps. It is designed to offer balance and prevent tripping, especially on slippery or uneven surfaces. The smooth, curved design ensures a comfortable hold.

Your browser does not support the video tag.

Video 5.1: An overview of Metty Metal handrails, showcasing their design, adjustability, and safety benefits for various users and weather conditions. This video demonstrates the product's features and ease of installation.

6. MAINTENANCE

The Metty Metal handrail features a durable powder-coated finish designed for outdoor use and minimal maintenance.

- **Cleaning:** Wipe the handrail periodically with a damp cloth to remove dirt and debris. For stubborn stains, a mild soap solution can be used, followed by rinsing with clean water and drying thoroughly.

- **Inspection:** Annually, or more frequently in harsh weather conditions, inspect all mounting points and connections to ensure they remain tight and secure. Re-tighten any loose bolts.
- **Damage:** If the powder coating is chipped or scratched, touch up with appropriate outdoor-grade paint to prevent rust and maintain appearance.

7. TROUBLESHOOTING

- **Handrail feels wobbly after installation:**
 - Ensure all mounting bolts are fully tightened.
 - Verify that the mounting surface is solid and free from cracks or deterioration.
 - If installed on concrete, confirm that the expansion anchors are properly seated.
- **Difficulty adjusting the angle:**
 - Loosen the adjustment bolts sufficiently before attempting to change the angle.
 - Ensure no debris is obstructing the adjustment mechanism.
- **Rust spots appear:**
 - This may indicate damage to the powder coating. Clean the area, sand lightly if necessary, and apply a rust-inhibiting primer and outdoor-grade paint.

8. SPECIFICATIONS

Feature	Detail
Brand	Metty Metal
Model Number	Q350
Material	Wrought Iron
Color	White
Product Dimensions	36"L x 25"W (Armrest length 26.7 inches, height 36 inches, center armrest 13 inches)
Item Weight	11.66 pounds (5.3 Kilograms)
Maximum Weight Capacity	600 Pounds
Finish Type	Powder Coated
Steps Accommodated	1 or 2 steps (adjustable angle)

9. WARRANTY AND SUPPORT

For warranty information or technical support, please contact Metty Metal directly through their official website or the retailer where the product was purchased. Keep your purchase receipt as proof of purchase.

