

Vgate vLinker FS USB

Vgate vLinker FS OBD2 USB Adapter Instruction Manual

Model: vLinker FS USB - Windows

Brand: Vgate

1. INTRODUCTION

The Vgate vLinker FS OBD2 USB Adapter is a professional-grade diagnostic tool specifically optimized for use with FORScan software. This adapter provides a stable and fast connection to your vehicle's On-Board Diagnostics (OBD2) system, enabling comprehensive diagnostics, configuration, and programming capabilities for compatible vehicles. Its automatic electronic switching feature allows seamless access to both High-Speed CAN (HS-CAN) and Medium-Speed CAN (MS-CAN) buses simultaneously, unlocking advanced functions not available with traditional toggle switch adapters.



Figure 1: Vgate vLinker FS OBD2 USB Adapter

2. SETUP GUIDE

2.1. Driver Installation

Before connecting your vLinker FS adapter, it is crucial to install the necessary USB drivers on your Windows computer. The adapter is not plug-and-play and requires specific drivers for proper communication. Refer to the '4 Easy Steps' diagram below for a visual guide.



Figure 2: 4 Easy Steps for Driver and Software Installation

Typically, you will need to visit the manufacturer's website (as indicated in the manual or packaging) to download the correct USB driver for your Windows operating system (e.g., Windows 10 64-bit). Look for an executable (.exe) file for automatic installation.

2.2. Connecting the Adapter

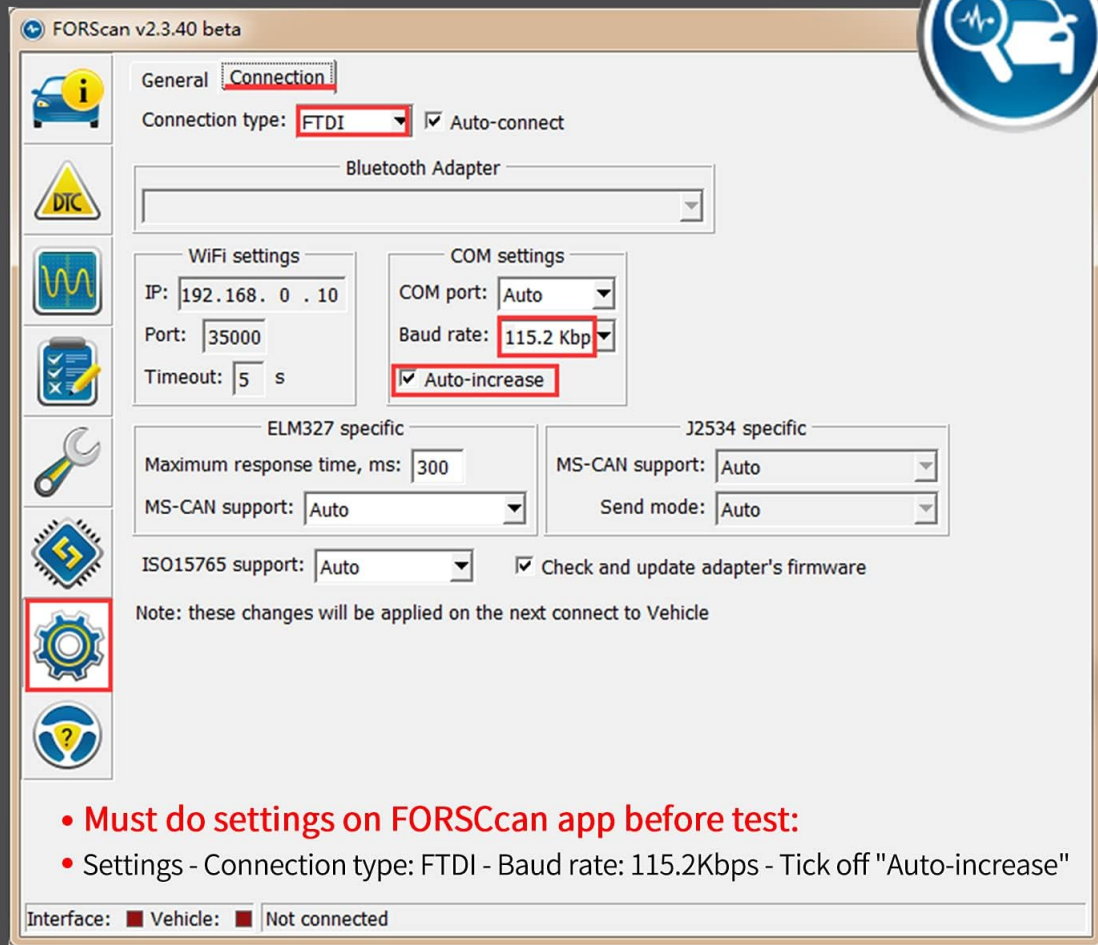
Once the drivers are installed, connect the vLinker FS adapter to your computer via the USB cable. Then, locate your vehicle's OBD2 port, usually found under the dashboard on the driver's side, and plug in the adapter. Ensure the vehicle's ignition is turned on (engine can be off, but ignition must be in the 'ON' position).

3. OPERATING YOUR vLINKER FS ADAPTER

3.1. FORScan Software Compatibility

The Vgate vLinker FS is specifically designed and optimized for FORScan software. Please note that FORScan currently requires a Windows-based computer; there is no official Mac version available. Ensure your FORScan settings are configured correctly for the adapter.

FORScan Settings



- **Must do settings on FORScan app before test:**
- Settings - Connection type: FTDI - Baud rate: 115.2Kbps - Tick off "Auto-increase"

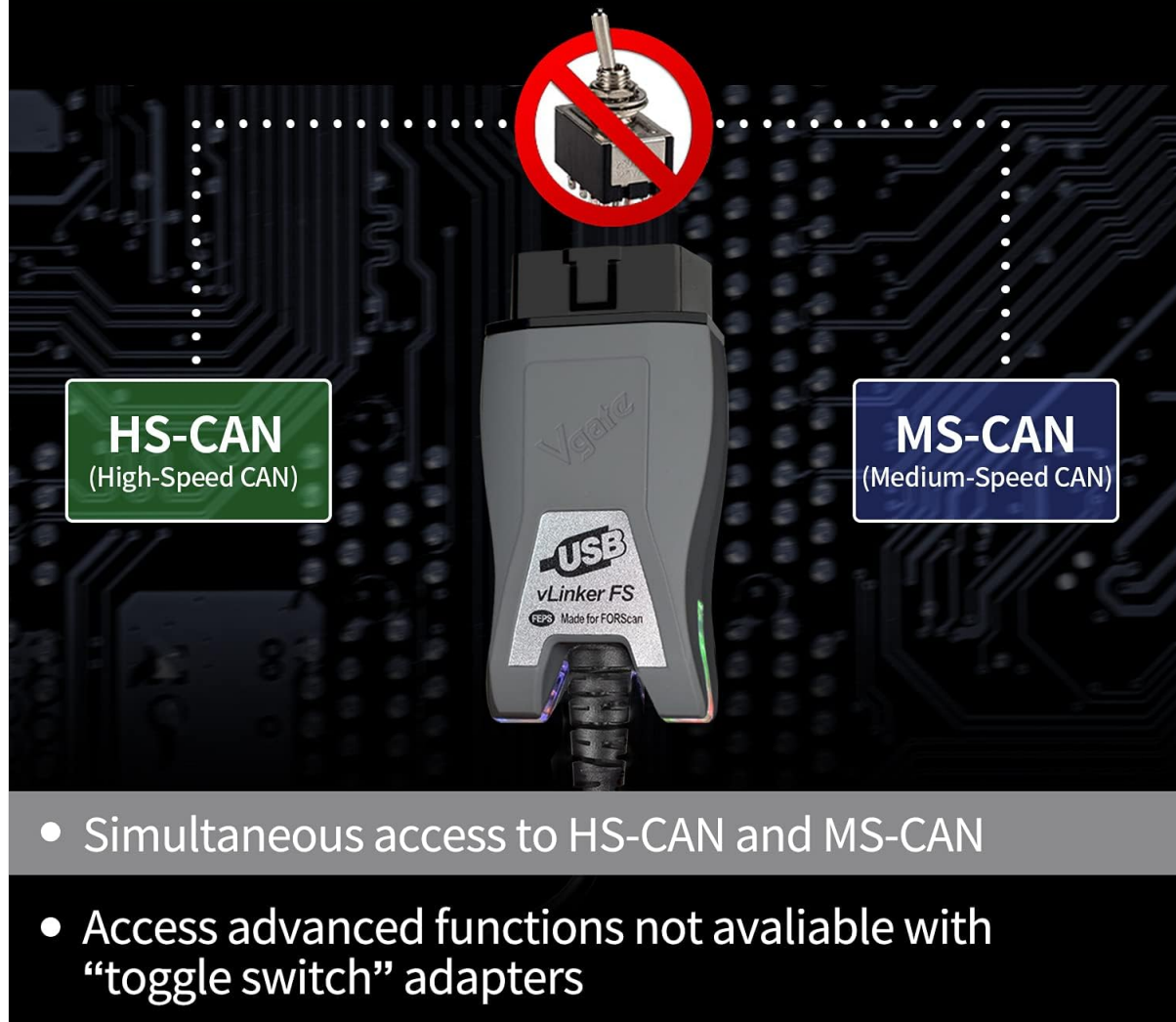
Figure 3: Recommended FORScan Settings for vLinker FS

In FORScan, navigate to Settings > Connection type: FTDI > Baud rate: 115.2Kbps > Tick off "Auto-increase".

3.2. Automatic Electronic Switching

A key advantage of the vLinker FS is its automatic electronic switching capability. This allows FORScan to access all CAN buses (HS-CAN and MS-CAN) simultaneously without manual intervention, enabling access to advanced functions and modules that are not accessible with older, manual toggle switch adapters.

Automatic Electronic Switching



- Simultaneous access to HS-CAN and MS-CAN
- Access advanced functions not available with “toggle switch” adapters

Figure 4: Automatic Electronic Switching for HS-CAN and MS-CAN

3.3. Enhanced Performance

The vLinker FS adapter boasts a high transmission rate of up to 3 Mbps and a baud rate of up to 3 MHz, ensuring faster data transfer and smoother real-time graphics within FORScan. It also supports FEPS 18V programming voltage output, which is essential for certain vehicle configuration and programming tasks.

More Stable Powerful & Faster



- FEPS 18V Programming Voltage Output
- Up to 3Mbps Transmission Rate
- OBD Request Byte up to 4128 Bytes
- Serial Buffer is 8192 Bytes

Figure 5: Faster and More Stable Performance

3.4. Configuration and Programming Functions

With the vLinker FS and FORScan, you can access and modify various vehicle settings and modules. This includes functions like enabling or disabling specific features (e.g., Bambi Mod, reverse tilt mirrors, secure idle, tire size correction, 5-turn signal flash, heated steering wheel, disabled double horn honk, automatic lock, tire pressure monitoring), reading diagnostic trouble codes (DTCs), and performing service procedures.

Automatic Electronic Switching

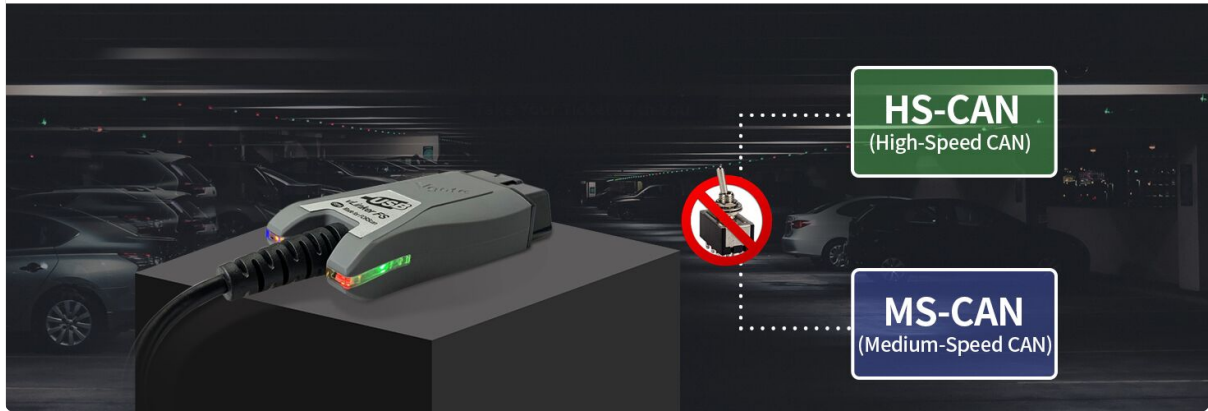


Figure 6: Examples of Hidden Functions Discoverable with FORScan

4. FIRMWARE UPDATE PROCEDURE

Keeping your vLinker FS adapter's firmware up-to-date ensures optimal performance and compatibility with the latest FORScan versions and vehicle models. Follow these steps to update the firmware:

1. **Connect to Computer:** Connect your vLinker FS USB adapter to your computer's USB port.
2. **Open Firmware Updater:** Locate and open the 'vLinkerFwUpdater' application (usually found in the driver package downloaded from the official website).
3. **Select COM Port and Baud Rate:** In the updater software, select the correct COM port for your device (e.g., COM130) and set the Baud rate to 115200.
4. **Browse for Firmware File:** Click 'Browse' and select the latest firmware file (usually a .bin or similar file) downloaded from the official Vgate website.
5. **Start Update:** Click 'Update' to begin the firmware update process. Do not disconnect the adapter or close the application until the update is complete.
6. **Reconnect:** After the update is finished, unplug and then reconnect the device.

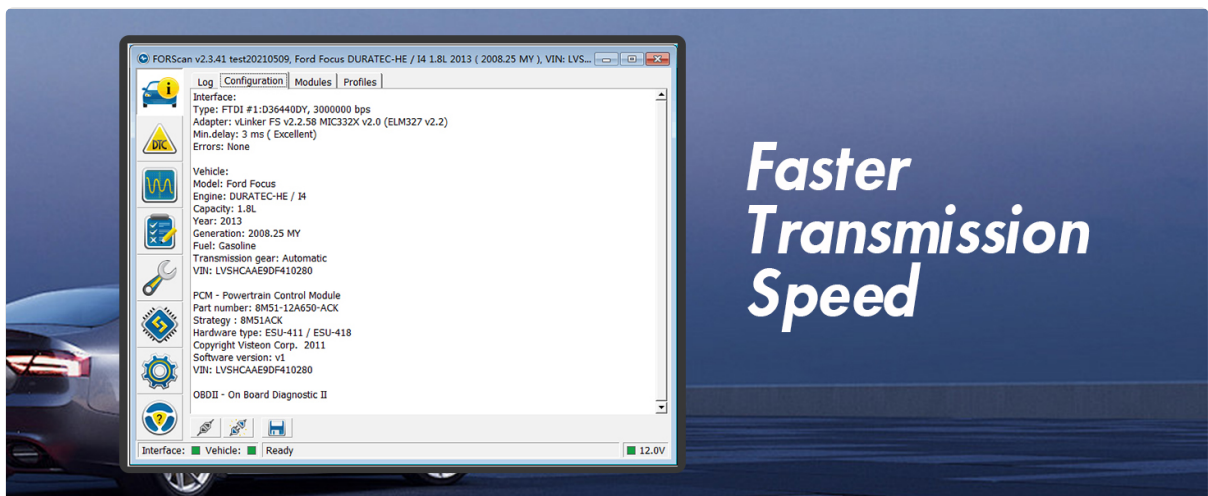


Figure 7: Visual Guide for Firmware Update

Video 1: Vgate vLinker FS USB FIRMWARE UPDATE. This video demonstrates the step-by-step process for updating the firmware of your Vgate vLinker FS USB adapter, including driver installation and using the updater tool.

5. CARE AND MAINTENANCE

To ensure the longevity and reliable performance of your Vgate vLinker FS adapter, follow these simple care and maintenance guidelines:

- **Storage:** Store the adapter in a cool, dry place away from direct sunlight and extreme temperatures.
- **Cleaning:** Use a soft, dry cloth to clean the exterior of the adapter. Avoid using harsh chemicals or abrasive materials.
- **Cable Care:** Do not bend or crimp the USB cable excessively. Store it neatly coiled to prevent damage.
- **Connection:** Always ensure the adapter is properly seated in both the OBD2 port and the USB port to prevent loose connections or damage to the pins.

6. TROUBLESHOOTING COMMON ISSUES

If you encounter issues while using your Vgate vLinker FS adapter, consider the following troubleshooting tips:

- **Driver Not Recognized:** If the adapter is not recognized by your computer, ensure the correct USB drivers are installed. You may need to manually install them from the manufacturer's website. Check Device Manager (Windows) to confirm the adapter appears under 'Ports (COM & LPT)' or 'Universal Serial Bus controllers'.
- **FORScan Connection Errors:** Some users report better success connecting the adapter to the vehicle's OBD2 port *after* opening the FORScan software on the computer. If FORScan closes or gives an error upon connection, try this sequence.
- **Mac Compatibility:** FORScan software is designed for Windows operating systems only. This adapter will not work directly with macOS. A Windows virtual machine or Boot Camp setup on a Mac may allow functionality, but this is not officially supported by FORScan.
- **Vehicle Ignition:** Ensure the vehicle's ignition is in the 'ON' position (or engine running) for the adapter to communicate with the vehicle's modules.
- **Modifying Vehicle Settings:** Be extremely cautious when modifying vehicle settings with FORScan. Incorrect changes can lead to vehicle malfunctions. Always back up original configurations before making changes and consult reliable resources (like FORScan forums) if unsure.

7. PRODUCT SPECIFICATIONS

| Feature | Specification |
|-------------|----------------|
| Brand | Vgate |
| Model | vLinker FS USB |
| Item Weight | 5.3 ounces |

| Feature | Specification |
|--------------------------------|--|
| Product Dimensions | 4.33 x 1.77 x 0.79 inches |
| Operating System Compatibility | Windows |
| Transmission Rate | Up to 3 Mbps |
| Baud Rate | Up to 3 MHz |
| Programming Voltage Output | Supports FEPS 18V |
| CAN Bus Access | Automatic Electronic Switching (HS-CAN/MS-CAN) |

8. WARRANTY AND CUSTOMER SUPPORT

Warranty information for your Vgate vLinker FS OBD2 USB Adapter is typically provided with your purchase documentation. Please refer to the packaging or included inserts for specific warranty terms and conditions.

For technical assistance, troubleshooting, or any product-related inquiries, please contact the Vgatemall customer support team. Contact details can usually be found on the official Vgate website or through your purchase platform.