

## KIMAFUN KM-U208B

# KIMAFUN KM-U208B UHF Wireless Microphone Transmitter-Receiver System User Manual

Model: KM-U208B | Brand: KIMAFUN

## 1. INTRODUCTION

---

Thank you for choosing the KIMAFUN KM-U208B UHF Wireless Microphone Transmitter-Receiver System. This system is designed to convert your wired microphones into wireless ones, offering flexibility and high-quality audio transmission. This manual provides essential information for the safe and efficient operation of your device. Please read it thoroughly before use and retain it for future reference.

## 2. PRODUCT OVERVIEW

---

### Key Features

- **UHF Wireless Transmission:** Utilizes professional UHF wireless technology to avoid interference from 2.4G wireless devices. Features digital audio transmission, automatic infrared frequency matching, 48 KHz sampling frequency, and ultra-low audio delay for recording-level sound quality.
- **48V Phantom Power Support:** Compatible with both dynamic and condenser microphones. The receiver includes both XLR and 6.35mm jacks for compatibility with various equipment like mixers, amplifiers, and speakers. The XLR plug lock design prevents accidental disconnections.
- **Long Working Hours:** Powered by built-in lithium batteries. Provides up to 5 hours of operation with dynamic microphones. For condenser microphones requiring 48V phantom power, usage time typically ranges from 2-3 hours, varying by microphone model and power consumption.
- **Extended Transmission Range:** Equipped with a reception antenna to enhance frequency reception. Wireless range can reach up to 50 meters (165 feet) with the antenna installed, and 15-20 meters (65 feet) without it. Supports up to 5 systems for simultaneous use.
- **Wide Application Range:** Easy to use and compatible with most audio devices. Suitable for recording studios, theaters, conferences, teaching, and outdoor events.

### Component Identification

Refer to the diagram below for a detailed view of the transmitter and receiver components.

## WIRELESS AUDIO TRANSCEIVER SYSTEM

- ✓ Powered by built-in rechargeable lithium battery, fully charged in **2 hours**.
- ✓ Support **48V phantom power**, compatible with **dynamic** mics and **condenser** mics.
- ✓ Preset **16 groups** of adjustable channels to solve possible interference problems.



**Image 2.1:** Detailed view of the KIMAFUN KM-U208B wireless transmitter (left) and receiver (right), highlighting features such as the 6.35mm male plug, female XLR plug, lock knob, IR sync window, RF indicator, IR indicator, channel display, power button, channel +/- buttons, SYNC switch, low-voltage indicator, charging indicator, MINI-USB charging port, and antenna interface. A detachable antenna is also shown.

- **Transmitter (6.35mm Plug):** Features a 6.35mm male plug for connection to dynamic microphones. Includes IR Sync Window, RF Indicator, IR Indicator, Channel Display, Power Button, Channel +/- Button, SYNC Switch, Low-Voltage Indicator, Charging Indicator, MINI-USB Charging Port, and Antenna Interface.
- **Receiver (XLR Plug):** Features a female XLR plug with a lock knob for secure connection to audio equipment. Includes 48V Phantom Power Indicator, PO Power Indicator, Channel Display, Power Button, Channel +/- Button, 48V Phantom Power Switch, Low-Voltage Indicator, Charging Indicator, MINI-USB Charging Port, and Antenna Interface.
- **Detachable Antenna:** Improves signal reception and extends wireless range.

### 3. WHAT'S IN THE BOX

The KIMAFUN KM-U208B package typically includes the following items:



**Image 3.1:** Contents of the KIMAFUN KM-U208B package, showing the transmitter, receiver, two detachable antennas, a dual-head USB charging cable, user manual, and a carrying case.

- 1 x UHF Wireless Transmitter (6.35mm plug)
- 1 x UHF Wireless Receiver (XLR plug)
- 2 x Detachable Antennas
- 1 x Dual-head USB Charging Cable
- 1 x User Manual
- 1 x Carrying Case

## 4. SETUP INSTRUCTIONS

### 4.1 Charging the Devices

Before initial use, fully charge both the transmitter and receiver using the provided dual-head USB charging cable. The charging indicator will illuminate during charging and turn off when fully charged. A full charge typically takes 2 hours.



**Image 4.1:** Illustration of the KIMAFUN KM-U208B transmitter and receiver being charged simultaneously using the dual-head USB charging cable. The charging indicator (CHR) is shown illuminated.

## 4.2 Connecting the Antenna

For optimal performance and extended range, screw the detachable antennas onto the antenna interfaces of both the transmitter and receiver.

## 4.3 Connecting the Transmitter to a Microphone

1. **For Dynamic Microphones:** Insert the 6.35mm male plug of the transmitter directly into the microphone's output jack.
2. **For Condenser Microphones:** Insert the 6.35mm male plug of the transmitter into the microphone's output jack. Ensure the 48V phantom power switch on the receiver is activated if your condenser microphone requires it.

## ***BUILT-IN RECHARGEABLE LITHIUM BATTERY***

The transmitter and receiver can be fully charged in **2** hours by the packaged dual-head USB charging cable. The duration of the transmitter's use when connecting a condenser mic will vary depending on your mic power.



**Image 4.2:** The KIMAFUN KM-U208B transmitter connected to a condenser microphone (left) and a dynamic microphone (right), demonstrating compatibility with both types of microphones.

### **4.4 Connecting the Receiver to Audio Equipment**

Insert the XLR female plug of the receiver into the XLR input of your audio mixer, amplifier, PA system, or speaker. Ensure the lock knob is engaged to secure the connection.

# PLUG AND PLAY

**Without Antenna: Up to 65FT (20M)**

**With Antenna: Up to 165FT (50M)**

Tips: Support up to **5** systems to be used on the same occasion.

**UHF Wireless Transmission**

**Use Time 5-6H**

**Wireless Distance 65FT-165FT**

**16 Optional Channels**

**Image 4.3:** The KIMAFUN KM-U208B receiver connected to a mixer, illustrating its wide compatibility with various audio equipment such as speakers, recorders, mixers, and PA systems. The XLR plug lock design is highlighted.

## 5. OPERATING INSTRUCTIONS

### 5.1 Powering On/Off

- **To Power On:** Press and hold the Power Button on both the transmitter and receiver until the display illuminates.
- **To Power Off:** Press and hold the Power Button on both devices until the display turns off.

### 5.2 Automatic Frequency Matching (IR Sync)

The system uses automatic infrared frequency matching for easy setup.

1. Ensure both the transmitter and receiver are powered on.
2. Align the IR Sync Window on the transmitter with the IR sensor on the receiver.
3. Press the SYNC switch on the transmitter. The devices will automatically pair and synchronize their frequencies. The RF indicator will light up when a stable connection is established.

### 5.3 Channel Selection

The system supports up to 16 adjustable channels to avoid interference. Use the Channel +/- buttons on both the transmitter and receiver to manually select a different channel if interference occurs. Ensure both devices are set to the same channel.

### 5.4 48V Phantom Power Activation (Receiver)

If using a condenser microphone that requires phantom power, activate the 48V Phantom Power Switch on the receiver. The 48V Phantom Power Indicator will illuminate. This function is not needed for dynamic microphones.



**Image 5.1:** Diagram illustrating the use of the KIMAFUN KM-U208B with a condenser microphone (top) requiring 48V phantom power, resulting in 2-3 hours of use, and with a dynamic microphone (bottom) not requiring phantom power, resulting in 5-6 hours of use. The 48V switch and battery indicators are shown.

### 5.5 Transmission Range Considerations

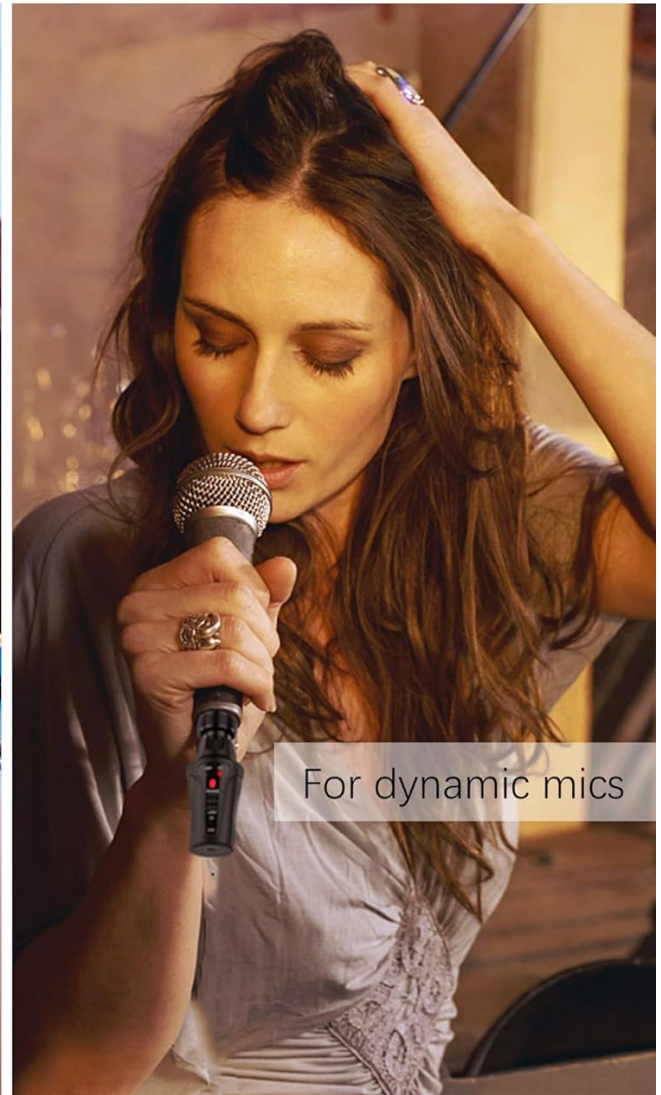
The effective transmission distance is up to 50 meters (165 feet) with the antenna installed and 15-20 meters (65 feet) without the antenna. For optimal performance, ensure a clear line of sight between the transmitter and receiver and avoid obstacles.

# MAKE YOUR FAVORITE MICROPHONE WIRELESS

SUPPORT 48V PHANTOM POWER SUPPLY



For condenser mics



For dynamic mics

**Image 5.2:** Comparison of transmission distances for the KIMAFUN KM-U208B: up to 65 feet (20m) without the antenna and up to 165 feet (50m) with the antenna. Tips indicate support for up to 5 systems simultaneously, UHF wireless transmission, 5-6 hours use time, and 16 optional channels.

## 6. MAINTENANCE

- **Cleaning:** Use a soft, dry cloth to clean the devices. Do not use abrasive cleaners or solvents.
- **Storage:** Store the system in a cool, dry place away from direct sunlight and extreme temperatures. Use the provided carrying case for protection during transport and storage.
- **Battery Care:** To prolong battery life, avoid fully discharging the devices frequently. Recharge them regularly, even if not in use for extended periods.
- **Antenna:** Handle the detachable antennas with care to prevent damage.

## 7. TROUBLESHOOTING

Problem	Possible Cause	Solution
---------	----------------	----------

Problem	Possible Cause	Solution
No sound or weak signal.	<ul style="list-style-type: none"> <li>◦ Devices not powered on.</li> <li>◦ Low battery.</li> <li>◦ Transmitter and receiver not paired or on different channels.</li> <li>◦ Antenna not connected or damaged.</li> <li>◦ Too far from receiver or obstacles.</li> <li>◦ Incorrect microphone connection.</li> <li>◦ 48V phantom power not activated for condenser mic.</li> </ul>	<ul style="list-style-type: none"> <li>◦ Ensure both devices are powered on.</li> <li>◦ Recharge the devices.</li> <li>◦ Perform IR sync to pair, or manually set to the same channel.</li> <li>◦ Connect the antenna securely.</li> <li>◦ Reduce distance and ensure clear line of sight.</li> <li>◦ Check microphone connection to transmitter.</li> <li>◦ Activate 48V phantom power switch on receiver for condenser microphones.</li> </ul>
Interference or static noise.	<ul style="list-style-type: none"> <li>◦ Other wireless devices operating on the same frequency.</li> <li>◦ Environmental electromagnetic interference.</li> </ul>	<ul style="list-style-type: none"> <li>◦ Change the operating channel using the Channel +/- buttons.</li> <li>◦ Move away from other wireless devices or sources of interference.</li> </ul>
Short battery life.	<ul style="list-style-type: none"> <li>◦ Using a condenser microphone with 48V phantom power.</li> <li>◦ Battery degradation over time.</li> <li>◦ Not fully charged.</li> </ul>	<ul style="list-style-type: none"> <li>◦ This is normal for condenser microphones; ensure to charge before each use.</li> <li>◦ Ensure devices are fully charged before use.</li> </ul>

## 8. SPECIFICATIONS

Feature	Detail
Model Number	KM-U208B
Wireless Type	UHF
Frequency Range (Europe)	863 - 865 MHz
Sampling Frequency	48 KHz
Channels	Up to 16 (Supports up to 5 systems simultaneously)
Transmission Distance (with antenna)	Up to 50 meters (165 feet)
Transmission Distance (without antenna)	15-20 meters (65 feet)
Battery Type	2 x Lithium-polymer (included)
Charging Time	Approximately 2 hours
Operating Time (Dynamic Mic)	Up to 5 hours
Operating Time (Condenser Mic with 48V)	2-3 hours (varies by mic power consumption)

Feature	Detail
Dimensions (L x W x H)	17.5 x 10 x 6 cm (6.9 x 3.9 x 2.4 inches)
Weight	390 grams (0.86 lbs)
UPC	726312977396

## 9. SAFETY INFORMATION

---

- Do not expose the device to water, moisture, or extreme temperatures.
- Avoid dropping or subjecting the device to strong impacts.
- Do not attempt to disassemble or repair the device yourself. Refer to qualified personnel for service.
- Use only the provided charging cable or a certified equivalent.
- Keep out of reach of children.
- Dispose of batteries according to local regulations.

## 10. WARRANTY AND SUPPORT

---

Specific warranty information is not provided in the product details. For warranty claims or technical support, please contact KIMAFUN customer service directly through their official website or the retailer where the product was purchased. Please have your purchase receipt and product model number (KM-U208B) ready when contacting support.