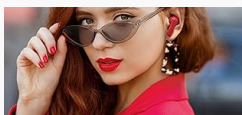


## AIHOOR A2



# AIHOOR Wireless Earbuds A2 Instruction Manual

## 1. INTRODUCTION

Thank you for choosing the AIHOOR Wireless Earbuds A2. These Bluetooth 5.3 in-ear headphones are designed to provide high-quality audio with extra bass, a built-in microphone, and intuitive touch controls. This manual will guide you through the setup, operation, maintenance, and troubleshooting of your new earbuds to ensure an optimal user experience.

## 2. PACKAGE CONTENTS

Please verify that all items are present in your package:

- 2 x AIHOOR Wireless Earbuds (Left and Right)
- 1 x Charging Case
- 4 x Pairs of Ear Tips (various sizes)
- 1 x USB Charging Cable



Image: AIHOOR A2 Earbuds and accessories.

## 3. PRODUCT OVERVIEW

The AIHOOR A2 earbuds feature a compact design with a portable charging case. Each earbud is equipped with a 10mm PEEK+PU dynamic driver for enhanced audio performance.



Image: AIHOOR A2 Wireless Earbuds in their charging case.



Image: Internal components of an AIHOOR A2 earbud.

## 4. SETUP

### 4.1 Initial Charging

Before first use, fully charge the earbuds and charging case. Due to transportation safety, the earbuds may not be fully charged upon arrival. If the product does not turn on, please charge it first.

- Place the earbuds into the charging case.
- Connect the USB charging cable to the charging case and a power source.
- The charging case and earbuds will indicate charging status (refer to LED indicators, if present, not specified in data).
- A full charge for the case and earbuds typically takes approximately 1.5 hours.



Image: Earbuds charging in their case via USB-C.

## 4.2 Wearing the Earbuds

For optimal sound quality and comfort, select the correct size ear tips and ensure a proper fit.

- Choose from the four included ear tip sizes (L, M, S, XS) to find the best seal for your ear canal.

- Gently insert the earbud into your ear and rotate slightly to secure it in place.

# EXTRA BASS

Feel the true thumping bass from the music



Image: Man wearing an earbud, illustrating proper fit.



Image: Earbud designed for small ears.

### 4.3 Bluetooth Pairing

The AIHOOR A2 earbuds are compatible with iOS, Android, Mac, and Windows devices that support Bluetooth 4.0 or higher.

1. Open the charging case. The earbuds will automatically enter pairing mode.
2. On your device, navigate to the Bluetooth settings.
3. Select "AIHOOR A2" from the list of available devices.
4. Once connected, you will hear an audio prompt, and the earbuds will be ready for use.



# EASY PAIRING



\*Fully compatible with iPhone, iPad, MacBook. Samsung and other Android phones and tablets. Compatible with laptops with Bluetooth.

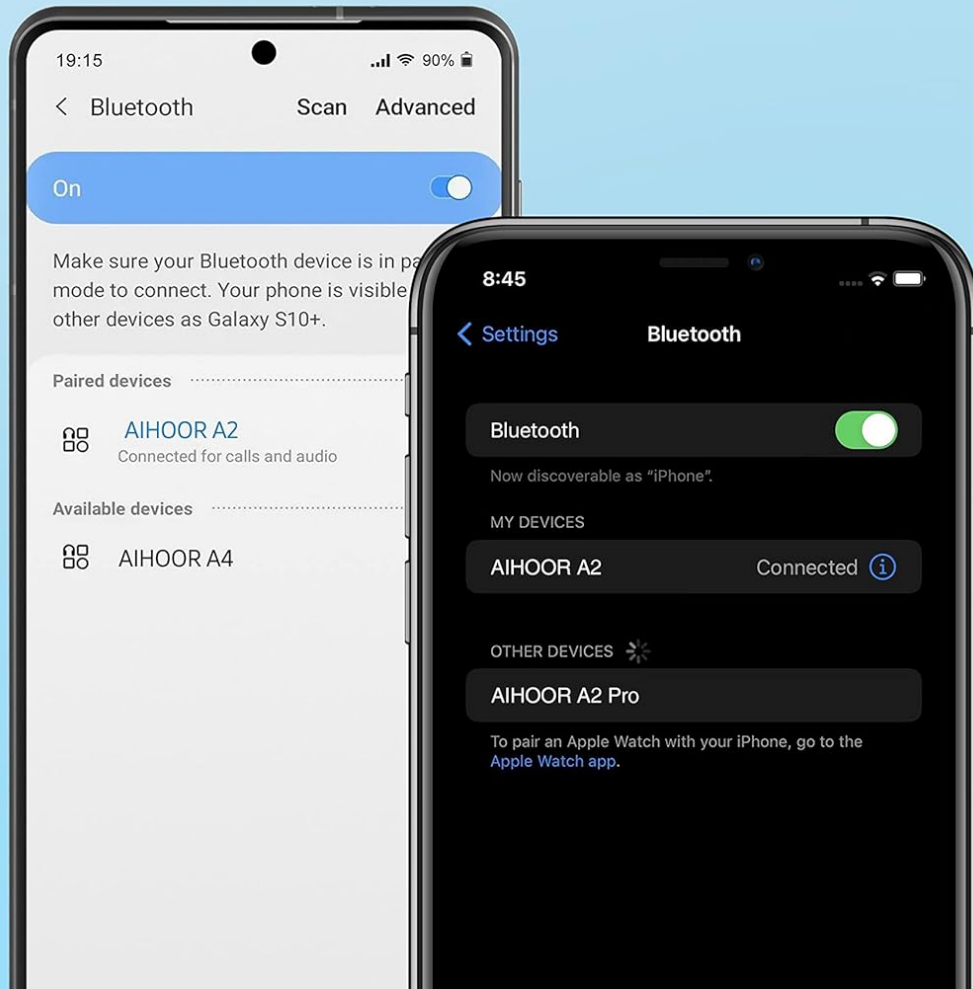


Image: Easy Bluetooth pairing process.

## Universal Bluetooth Compatibility



The earbuds support the connection of devices with Bluetooth version 4.0 or higher. Including iPhone, Samsung phones and other smartphones like LG, Google, and tablets like iPad. Laptops like MacBook.



## 5. OPERATING INSTRUCTIONS

### 5.1 Touch Controls

The AIHOOR A2 earbuds feature intuitive touch controls on both earbuds for managing audio playback, calls, and voice assistants.



The image shows a black AIHOOR A2 earbuds charging case. A USB-C cable is plugged into the bottom of the case, with one end connected to a laptop's USB-C port and the other end connected to a smartphone. The smartphone screen displays a music player interface with the text 'AIHOOR A2 Connected' and a play button. The background is a light blue surface with a laptop keyboard and a small potted plant visible.

**5HR PLAYTIME**  
≈ 150 songs on a single charge

**5× BATTERY EXTENSION**  
Case battery recharges the earbuds 5 times

**USB-C CHARGING**  
Rapid fully charged within 1.5 hour

Image: Touch control functions.

- **Volume Control:** Tap the left/right earbud to adjust volume (specific tap pattern not detailed, typically tap and hold or multiple taps).
- **Music Control:** Tap to play/pause, double-tap for next/previous track.

- **Call Control:** Tap to answer/end calls, tap and hold to reject calls.
- **Voice Assistant:** Triple-tap to activate Siri or other voice assistants.

## 5.2 Mono and Twin Mode

The earbuds support both mono (single earbud) and twin (both earbuds) use. Either earbud can be used independently without distinguishing between a master and slave unit.



Image: Mono and Twin Use capability.

## 5.3 Making Calls

The built-in microphone allows for clear hands-free calling. Keep your phone in your pocket and manage calls directly from the earbuds.



# BUILD-IN MIC

Keep your phone in pocket, and free your hands. Talk freely while you jogging and working out.



Image: Built-in microphone for calls.

## 5.4 Audio Quality

Experience high-quality stereo sound with enhanced bass, clear vocals, and crisp treble, powered by 10mm PEEK+PU dynamic drivers.



# FIT SMALL EARS

Oval shape of the ear tips are ergonomically designed to better fit the ear hole

Image: Extra Bass audio feature diagram.

## 6. MAINTENANCE

### 6.1 Cleaning

To maintain optimal performance and hygiene, regularly clean your earbuds and charging case.

- Use a soft, dry, lint-free cloth to wipe the earbuds and charging case.
- Remove ear tips and clean them with mild soap and water, then dry thoroughly before reattaching.
- Gently clean the charging contacts on both the earbuds and case with a dry cotton swab.

### 6.2 Water Resistance

The AIHOOR A2 earbuds feature IPX4 waterproof and sweat-proof protection, making them resistant to liquid splashes from any direction. This protection is suitable for workouts and light rain, but they are not designed for submersion in water.

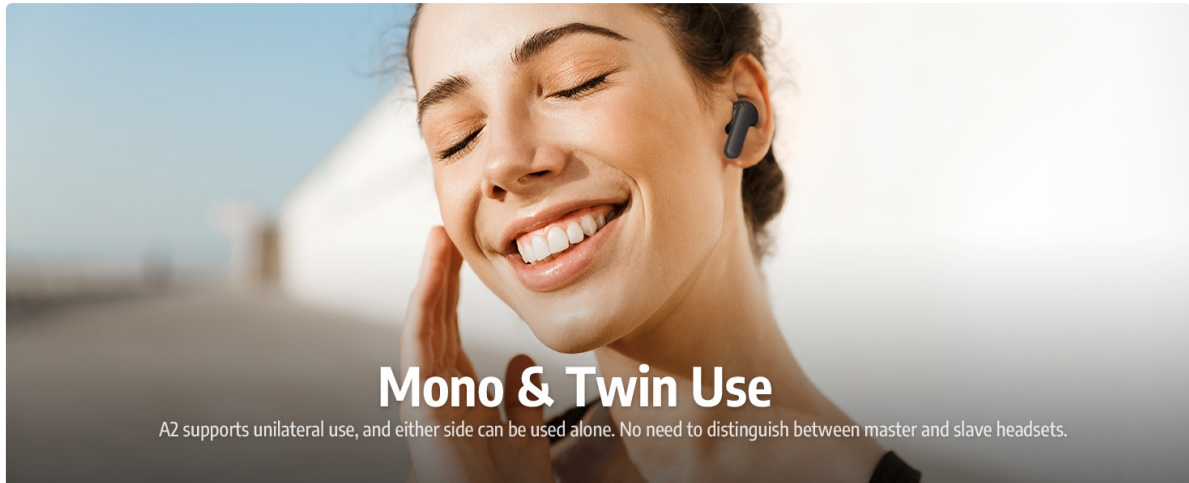


Image: Water and sweat proof protection.

## 7. TROUBLESHOOTING

If you encounter any issues with your AIHOOR A2 earbuds, please refer to the following common solutions:

- **Earbuds not turning on:** Ensure the earbuds and charging case are fully charged. Refer to Section 4.1.
- **Unable to pair:** Make sure Bluetooth is enabled on your device and the earbuds are in pairing mode. Try turning Bluetooth off and on again on your device.
- **Only one earbud connecting:** Place both earbuds back into the charging case, close the lid for a few seconds, then open it again to reset the connection. Re-pair with your device.
- **No sound:** Check the volume level on both your device and the earbuds. Ensure the earbuds are properly connected to your device.
- **Poor sound quality:** Ensure the ear tips provide a good seal in your ear. Try different sized ear tips. Clean any debris from the earbud nozzles.

If problems persist, please contact customer support for further assistance.

## 8. SPECIFICATIONS

Feature	Detail
Model Name	AIHOOR A2
Item Model Number	TWS-A2-BLK
Connectivity Technology	Wireless (Bluetooth 5.3)
Bluetooth Range	10 Meters
Audio Driver Type	Dynamic Driver (10mm PEEK+PU)

Frequency Range	20Hz - 20,000Hz
Impedance	32 Ohm
Control Method	Touch Control
Noise Control	Sound Isolation
Water Resistance Level	IPX4 Waterproof
Earbud Playtime	Up to 5 hours (single charge)
Total Playtime (with case)	Up to 30 hours
Charging Time	Approx. 1.5 hours (earbuds & case)
Charging Case Battery Life	Provides 5 full charges for earbuds
Charging Interface	USB-C
Earbud Weight	4 grams (each)
Charging Case Weight	46 Grams
Product Dimensions	2.4 x 1.77 x 0.94 inches
Compatible Devices	iOS, Android, Smartphone, iPad, Laptop, Desktop PC, Mac



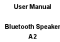
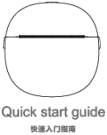
## 9. WARRANTY AND SUPPORT

AIHOOR provides a 365-day after-sales product protection period. If you experience any issues with your AIHOOR A2 earbuds, please contact the seller directly for assistance, including free replacement or refund if applicable.

For further support, please refer to the official AIHOOR store or contact their customer service.

**Online Store:** [AIHOOR Official Store on Amazon](#)



	<p><a href="#">AIHOOR A2 Wireless Earbuds Quick Start Guide   Setup, Pairing, and Controls</a></p> <p>Get started quickly with your AIHOOR A2 wireless earbuds. This guide covers setup, charging, Bluetooth pairing, controls, and reset procedures for AIHOOR A2 earbuds.</p>
	<p><a href="#">AIHOOR A2 True Wireless Stereo Earbuds User Manual</a></p> <p>Comprehensive user manual for the AIHOOR A2 True Wireless Stereo Earbuds, covering specifications, pairing, playback controls, charging, safety, and FCC compliance. Learn how to use your AIHOOR A2 earbuds effectively.</p>
	<p><a href="#">A2 Wireless Earbuds User Manual</a></p> <p>User manual for the A2 wireless earbuds, covering setup, charging, touch functions, product specifications, important notices, warranty information, and FCC compliance.</p>
	<p><a href="#">User Manual for A2 Bluetooth Speaker</a></p> <p>This user manual provides instructions for operating the A2 Bluetooth Speaker, including power on/off, Bluetooth association, mode changes, FM radio functions, SD card and Aux modes, volume control, and playback options. It also includes product specifications and FCC compliance information.</p>
	<p><a href="#">A2 Mini Pocket Printer Quick Start Guide and User Manual</a></p> <p>A comprehensive guide for the A2 Mini Pocket Printer, covering setup, operation, troubleshooting, safety precautions, and warranty information. Learn how to connect, print, and maintain your device.</p>
	<p><a href="#">AIHOOR A2 Wireless Earbuds Quick Start Guide   Setup, Pairing, and Controls</a></p> <p>Get started quickly with your AIHOOR A2 wireless earbuds. This guide covers setup, charging, Bluetooth pairing, controls, and reset procedures for AIHOOR A2 earbuds.</p>