

CHAMBERLAIN myQ-SGC2WCH

myQ Smart Garage Security Camera Instruction Manual

Brand: CHAMBERLAIN | Model: myQ-SGC2WCH

1. INTRODUCTION AND OVERVIEW

The myQ Smart Garage Camera is designed to provide comprehensive security and monitoring for your garage. It offers 1080p HD video, night vision, motion detection, and two-way audio, allowing you to see and hear what's happening in your garage from anywhere using the myQ app. Its robust design ensures reliable performance across a wide range of temperatures, and its versatile mounting options make installation straightforward.



Figure 1: Front view of the myQ Smart Garage Camera.

2. SETUP GUIDE

2.1. What's Included

- Smart Garage Camera

- AC power adapter
- USB cable
- Installation guide
- Anchors (for surface mount)

2.2. Physical Installation

The myQ Smart Garage Camera offers flexible installation options. Its magnetic base allows for effortless attachment to metal surfaces, such as your garage door opener or metal shelving. For non-magnetic surfaces, optional adhesive and hardware (screws and anchors) are included for secure mounting.



Figure 2: The magnetic base of the camera allows for easy attachment to metal surfaces.

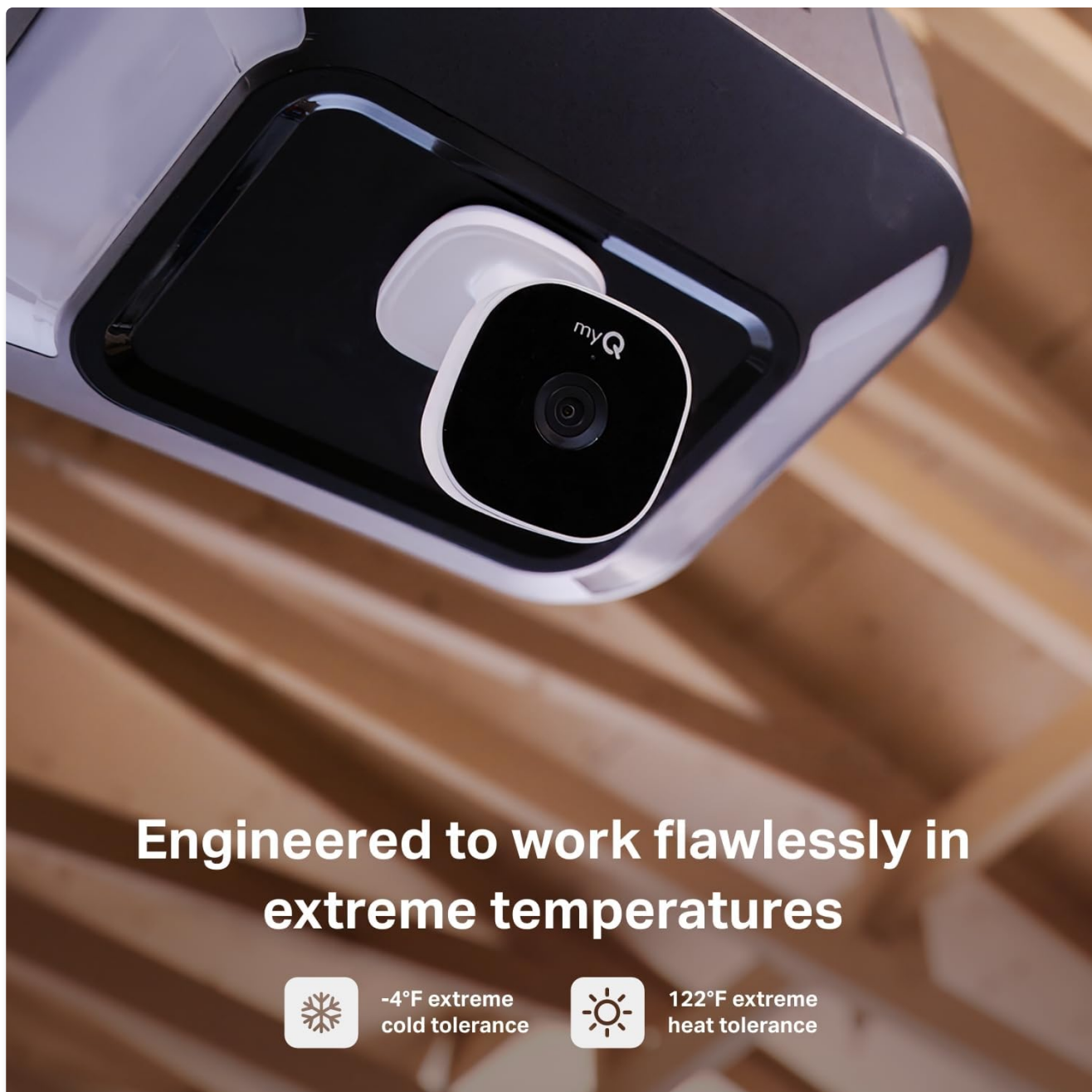


Figure 3: Example of the camera mounted magnetically to a garage door opener.

2.3. Power Connection

Connect the camera to a power outlet using the provided USB cable and AC power adapter. Ensure the cable is routed safely and does not interfere with garage door operation.

2.4. App Setup and Connectivity

Download the myQ app on your smartphone. The camera features integrated Bluetooth technology for a quick and easy setup process. Follow the in-app instructions to connect the camera to your home Wi-Fi network. A strong Wi-Fi signal in your garage is essential for optimal performance.

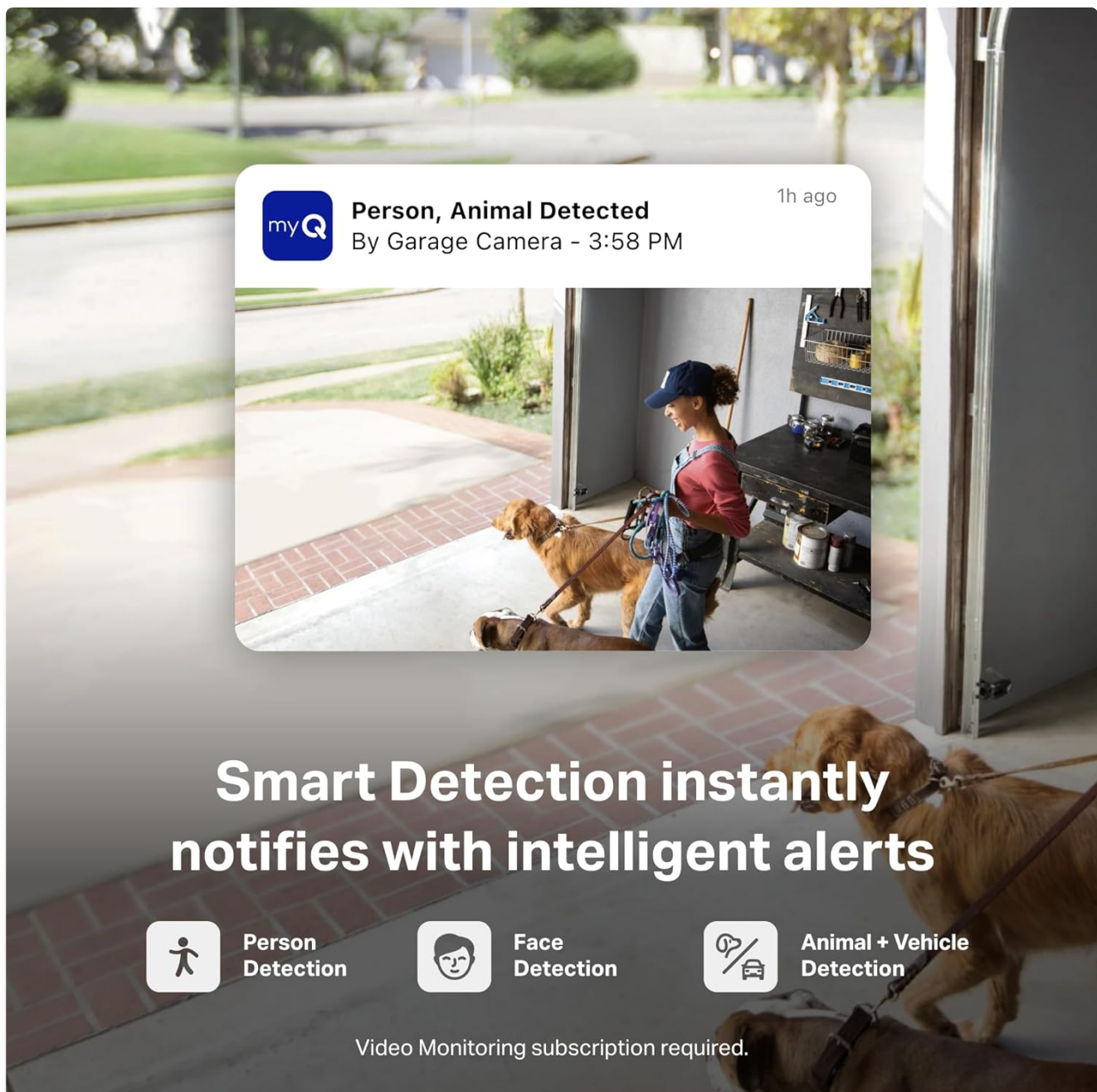


Figure 4: The myQ app provides control and monitoring of your smart garage devices.

Video 1: Official myQ Smart Garage Camera overview and setup demonstration by Chamberlain.

3. OPERATING INSTRUCTIONS

3.1. Live View and Video Quality

Access live streaming 1080p HD video of your garage through the myQ app. The camera features a 130° wide-angle lens and a 360° manually adjustable swivel lens, ensuring a full view of your garage space. High Dynamic Range (HDR) and Night Vision capabilities provide exceptional image quality in various lighting conditions.

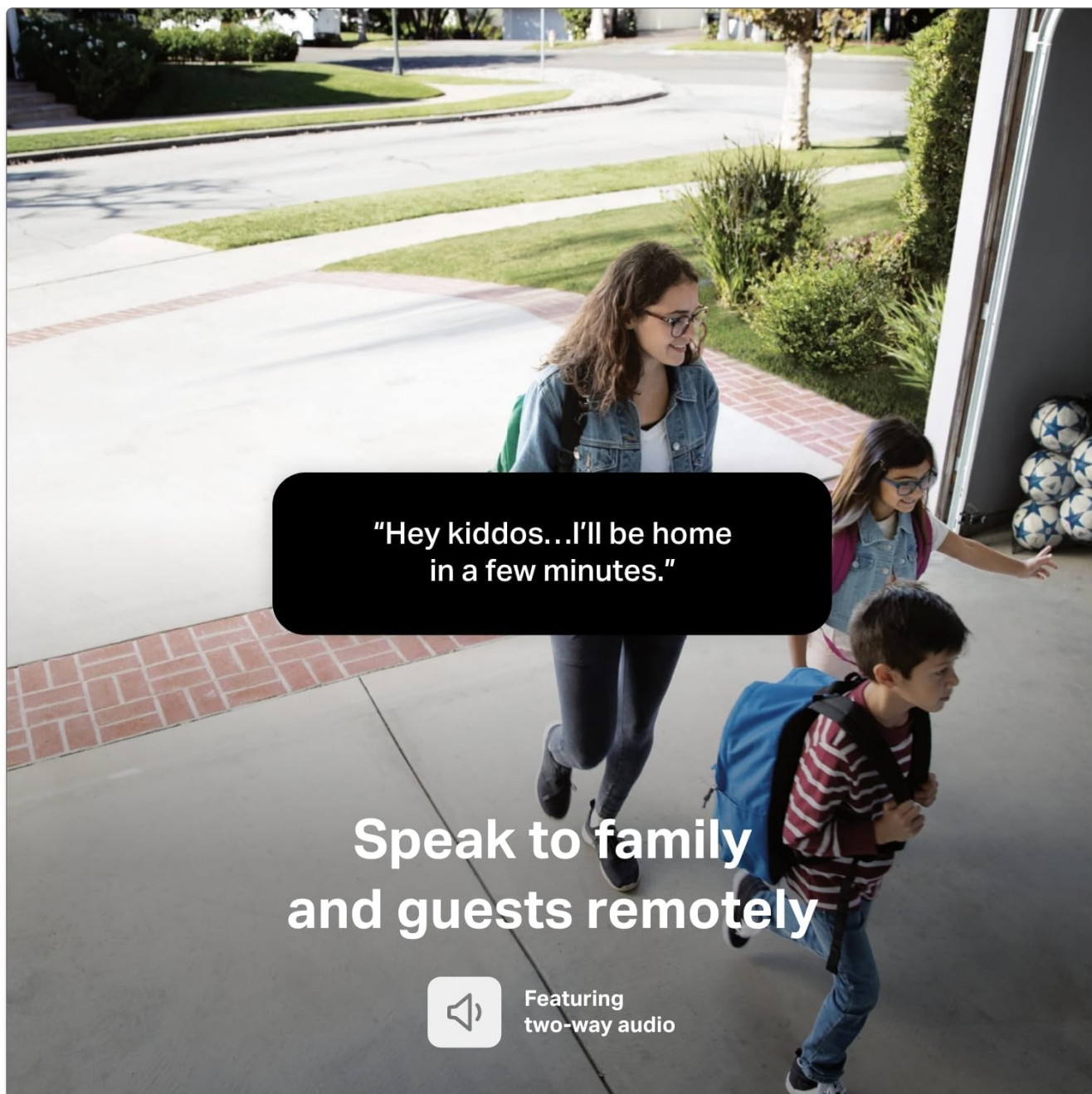


Figure 5: Live view of your garage accessible through the myQ app.

3.2. Two-Way Audio

The camera supports adjustable two-way audio, allowing you to communicate with anyone in your garage directly through the myQ app. This feature is useful for speaking to family members, delivery personnel, or deterring unwanted visitors.

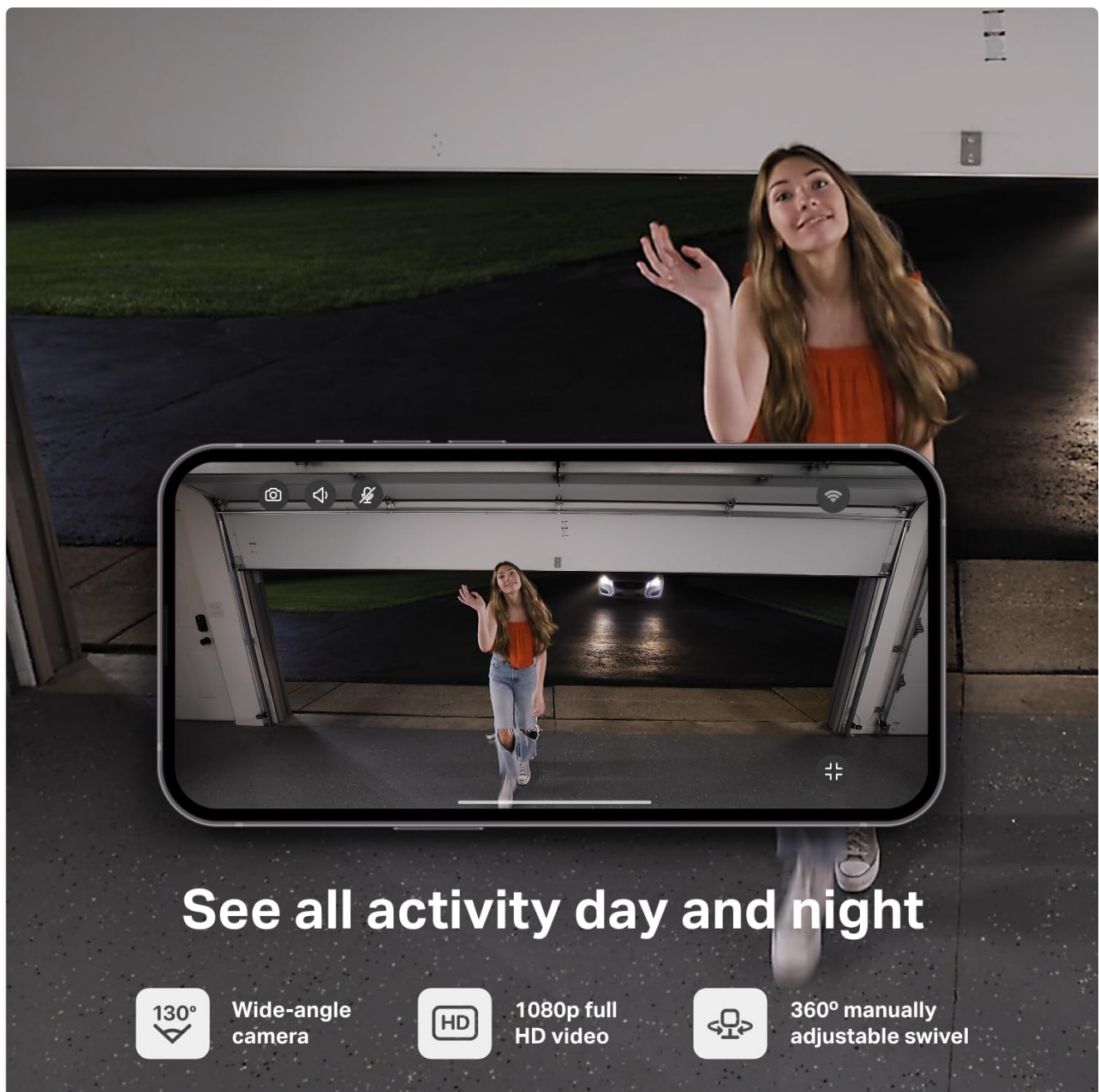


Figure 6: Utilize two-way audio to communicate with people in your garage.

3.3. Motion Detection and Alerts

The camera features advanced motion detection capabilities, sending instant notifications to your smartphone when activity is detected. With a myQ Video Monitoring subscription, you can receive intelligent alerts for specific detections such as people, animals, and vehicles.

NOV 3

- 00:15 **Vehicle**
05:00 PM · Garage Camera
- 00:12 **Person, Animal**
12:25 PM · Garage Camera
- 00:13 **Motion**
12:19 PM · Garage Camera
- 00:08 **Cleaner**
10:18 AM · Garage Camera

NOV 2

- 00:05 **Person**
4:30 PM · Garage Camera
- 00:09 **Person**
4:18 PM · Garage Camera

Home Users History Discover

9:31

0:10 / 0:12

Person, Animal
Garage Camera
Sun, Nov 3, 2024 12:25:03 PM

share download favorite delete

View up to 30 days of video history anytime, anywhere.

30 Days Video History

Video Monitoring subscription required.

Figure 7: Smart detection provides intelligent alerts for various activities.

3.4. Video History and Storage

With an optional myQ Video Monitoring subscription, you can access 7-day or 30-day video playback history, allowing you to review recorded events anytime, anywhere. A free 30-day trial is typically included to experience this feature.

FREE with your device

- ✓ 24/7 Live Video Streaming
- ✓ Motion Detection & Alerts
- ✓ Home Access¹
- ✓ 30 Day Free Trial of a myQ Plan²

Get more from your devices with a myQ plan.	30 Day \$99.99 / year \$9.99 / month	7 Day \$39.99 / year \$3.99 / month	Basic \$19.99 / year *SecureView openers only
Devices	Multiple	1 Device	1 Video Garage Door Opener
Video History	30 days All Events	7 days All Events	7 days Open & Close Events
Download, Favorite, & Share Recordings	✓	✓	✓
Smart Detection & Alerts Including Face ³ , Person, Animal, & Vehicle Detection	✓	✓	
Detection Zones	✓	✓	
Preview Notifications	✓	✓	
myQ Smart Secure ⁴	✓	✓	

1 Open, close, and secure entryways with access codes in the myQ app. myQ compatible garage door opener and/or smart locks required.

2 30 Day free trial of the 7 day video history myQ plan. \$39.99 / year or \$3.99 / month after trial.

3 Face Detection is supported in the US and CA, excluding the state of Illinois for all devices. It is also excluded in Texas & Washington for all LiftMaster or Chamberlain Garage Door Openers with integrated camera and the myQ Smart Garage Camera (models myQ-SGC1WLM & myQ-SGC1WCH with serial number beginning TC-0001).

4 myQ Smart Outdoor Camera required in combination with myq compatible garage door opener and/or smart locks.

Figure 8: Review past events with the video history feature in the myQ app.

4. MAINTENANCE

The myQ Smart Garage Camera is built to withstand extreme weather conditions, operating reliably from -4°F to 122°F. Regular cleaning of the lens with a soft, dry cloth is recommended to maintain optimal video clarity. Ensure the power cable remains securely connected and free from damage.

5. TROUBLESHOOTING

5.1. Connectivity Issues

- Ensure your Wi-Fi signal is strong in the garage area.

- Verify Bluetooth is enabled on your smartphone during setup.
- Restart your Wi-Fi router and the camera.
- If issues persist, try resetting the camera to factory settings (refer to the full user manual for specific steps) and repeat the setup process.

5.2. Upside-Down Video Feed

If you have mounted the camera upside down, the video feed in the myQ app might appear inverted. To correct this, navigate to the camera's settings within the myQ app, find the 'Video Settings' or 'Camera Rotation' option, and select 'Flip' to adjust the orientation.

5.3. App Functionality

- Ensure your myQ app is updated to the latest version.
- Clear the app's cache or reinstall the app if it's not functioning correctly.
- Check your smartphone's location permissions for the myQ app.

6. SPECIFICATIONS

Feature	Detail
Model Name	MyQ Smart Garage Camera
Indoor/Outdoor Usage	Indoor
Video Capture Resolution	1080p HD
Viewing Angle	130 Degrees (wide-angle)
Field Of View	360 Degrees (manual swivel)
Connectivity Technology	Wi-Fi, Bluetooth
Power Source	AC power adapter
Operating Temperature	-4°F to 122°F
Mounting Type	Magnetic Base, Wall Mount (with anchors)
Item Dimensions (L x W x H)	5.81 x 4.5 x 4.38 inches
Item Weight	1.17 pounds

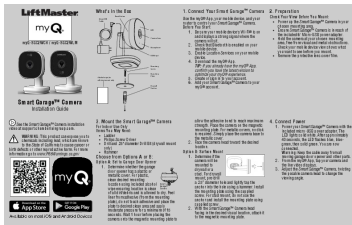
7. WARRANTY AND SUPPORT

The myQ Smart Garage Camera comes with a standard manufacturer's warranty. For detailed warranty information, please refer to the documentation included with your product or visit the Chamberlain website.

7.1. Additional Resources

- [Installation Manual \(PDF\)](#)
- [User Manual \(PDF\)](#)
- [User Guide \(PDF\)](#)

Documents - CHAMBERLAIN – myQ-SGC2WCH



[\[pdf\]](#) Installation Guide Guide Accessories

Smart Garage Camera Installation Guide English French Spanish LiftMaster myQ my Q Accessories

LiftMaster Accessories MYQ SGC2WCH SGC2WLM The Chamberlain Group LLC myQ® Garage® 114

5836 000 cgi widen net content l4kftglhuo original u mcyivk true |||

...

lang: **score:22** filesize: 1.33 M page_count: 6 document date: 2022-08-24