

Aoodor 10 x 12 ft. Outdoor Hardtop Gazebo

Aoodor 10 x 12 ft. Outdoor Hardtop Gazebo Instruction Manual

[Safety Information](#)

[Setup & Assembly](#)

[Operation](#)

[Maintenance](#)

[Troubleshooting](#)

[Warranty &](#)

[Support](#)

[Specifications](#)

1. SAFETY INFORMATION

Before beginning assembly or using your Aoodor 10 x 12 ft. Outdoor Hardtop Gazebo, please read and understand all instructions and safety warnings. Failure to follow these instructions may result in injury or damage to the product.

- Always follow the assembly instructions carefully.
- Secure the gazebo to a stable foundation to prevent it from tipping over, especially in windy conditions.
- Be cautious when handling the netting and curtains during installation and removal.
- Do not exceed the weight limit of the gazebo.
- Keep children and pets away from the gazebo during assembly and disassembly.
- Ensure all connections are tight and secure after assembly and periodically check them during use.
- Do not use open flames or heating appliances inside the gazebo.

2. SETUP & ASSEMBLY

The Aoodor 10 x 12 ft. Outdoor Hardtop Gazebo is designed for outdoor living spaces such as patios, decks, gardens, and backyards. Assembly is required and typically involves two or more people. Refer to the clear, illustrated instructions included in your product packaging for detailed, step-by-step guidance.

2.1 Pre-Assembly Checklist

- Verify all parts and hardware are present against the packing list provided in your manual.
- Ensure you have the necessary tools (e.g., ladders, wrenches, screwdrivers).
- Choose a level and stable location for installation.

2.2 Assembly Overview

The gazebo features a sturdy aluminum frame with a realistic wood-grain finish and a heavy-duty metal hardtop roof. The assembly process involves constructing the frame, attaching the roof panels, and installing the dual-track system for curtains and netting.



Image: The Aoodor 10 x 12 ft. Outdoor Hardtop Gazebo, fully assembled with furniture, showcasing its design and functionality.

10' x 12' GAZEBO

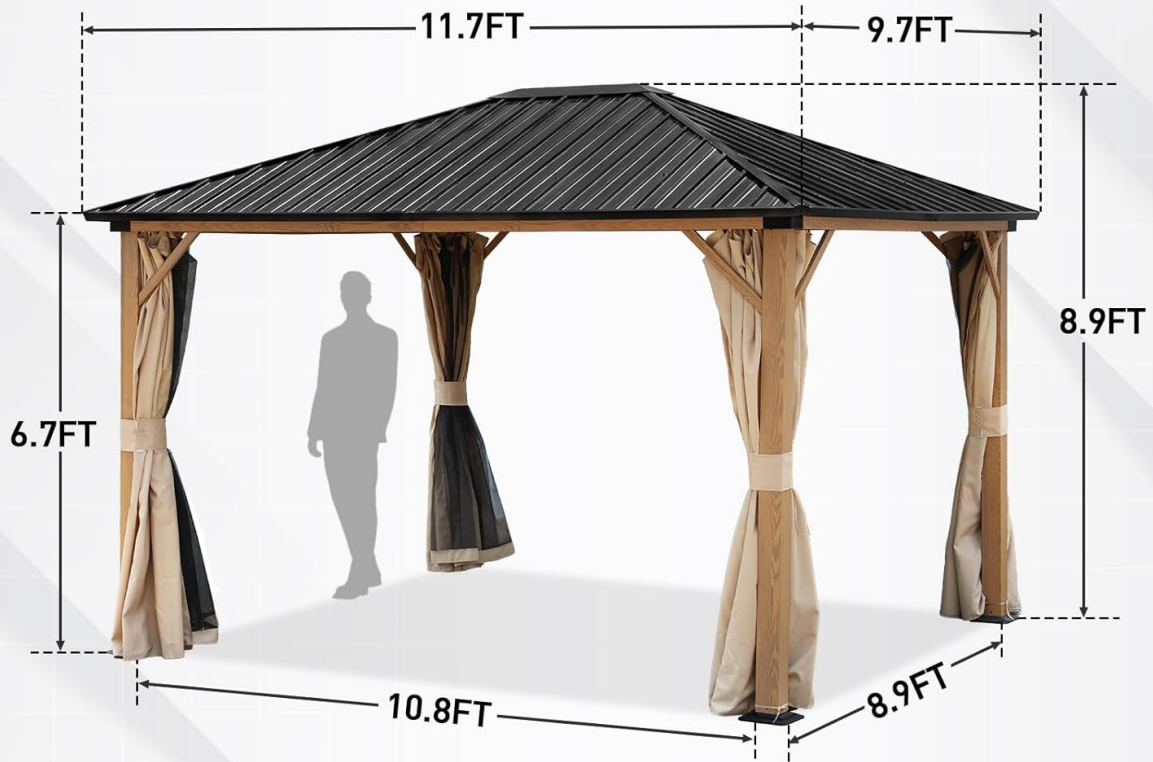


Image: A diagram illustrating the overall dimensions of the 10 x 12 ft. gazebo, including height and footprint.

2.3 Key Structural Features

- **Wood Grain Aluminum Frame:** Combines the aesthetic of wood with the durability and weather resistance of aluminum. This frame is rust-proof and rot-proof.
- **Anchored Design:** Heavy-duty anchor with pre-drilled holes for secure installation. Expansion bolts are used to firmly secure the pavilion bases, providing strong support in various weather conditions.
- **Triangular Structure:** Maximizes load-bearing capacity, ensuring stability for long-term outdoor use.



THREE MODES

- Fully Open**
Keep ventilated
- Semi Open**
Keep away from mosquitoes
- Fully Closed**
UV protection & privacy protection

Image: An illustration showing the layered construction of the wood grain aluminum frame, highlighting its components.

WOOD GRAIN ALUMINUM FRAME

The wood grain aluminum frame features a stable structure, excellent resistance to rust and corrosion, and the ability to maintain its aesthetic appeal for a long time

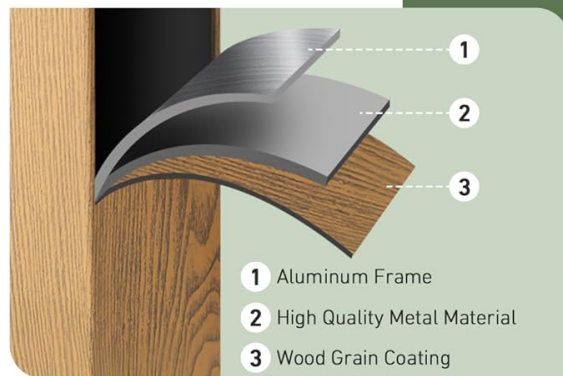
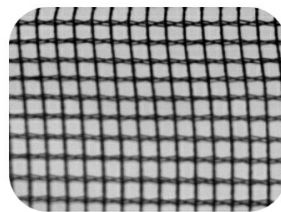


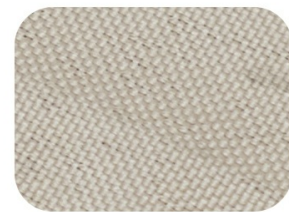
Image: Detail of the heavy-duty anchored base design, showing pre-drilled holes for secure installation with expansion bolts.



NETTING & CURTAIN



Lightweight Netting



Polyester Curtain



Sun Shading



No-Insect



Privacy Protect



Air Ventilation

Image: An illustration highlighting the triangular structural elements of the gazebo frame, contributing to its stability.

3. OPERATION

Your Aoodor Hardtop Gazebo is designed to enhance your outdoor experience by providing shade, protection, and privacy.

3.1 Hardtop Roof Functionality

The heavy-duty metal hardtop roof offers superior protection from various weather elements:

- **Sun Protection:** Provides essential shade and UV blocking, keeping the area underneath cool and protected.
- **Rain Protection:** The waterproof design ensures you and your patio furniture remain dry during rainfall.
- **Wind Resistance:** The robust construction helps withstand strong winds when properly anchored.
- **Snow Load:** Designed to handle snow accumulation, providing year-round usability.



Image: An illustration detailing the key features of the hardtop roof: durability, UV blocking capabilities, and waterproof design.

3.2 Dual Track System for Curtains and Netting

The gazebo features a built-in dual-track system, allowing independent operation of the polyester curtains and mosquito netting. This system provides flexibility for privacy, insect protection, and ventilation.

- **Polyester Curtains:** Offer privacy and additional sun protection. They include convenient tie-backs for easy organization when not in use.
- **Lightweight Netting:** Provides protection against insects while maintaining air circulation.

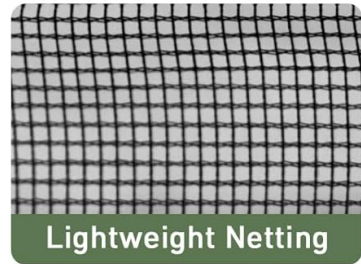


Image: Close-up view of the dual-track system, showcasing the polyester curtain and lightweight netting components.

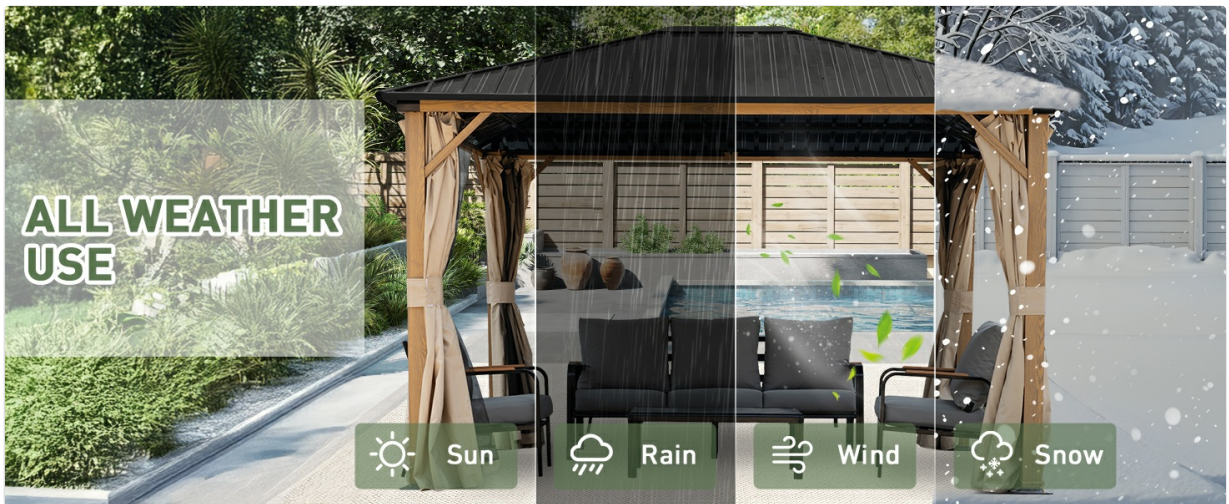


Image: The gazebo shown with both netting and curtains, illustrating their functions for sun shading, insect protection, privacy, and air ventilation.

3.3 Curtain Modes

The curtains can be adjusted to three primary modes:

- **Fully Open:** Curtains are tied back, allowing maximum ventilation and an unobstructed view.

- **Semi-Open:** Netting is closed, providing protection from insects while maintaining some airflow.
- **Fully Closed:** Both curtains and netting are closed, offering full privacy and enhanced UV protection.



Image: Visual representation of the three curtain modes: fully open for ventilation, semi-open with netting for insect protection, and fully closed for privacy and UV protection.

3.4 Top Hooks

The gazebo ceiling includes two hooks designed for hanging lights, fans, or decorative flower baskets, enhancing the usability and ambiance of your outdoor space.

HARDTOP ROOF



Durable



UV Blocking



Water Proof

Image: A close-up view of the two integrated hooks on the gazebo's ceiling, suitable for hanging lights, fans, or flower baskets.

4. MAINTENANCE

Regular maintenance will help prolong the life and appearance of your Aoodor Gazebo.

4.1 Cleaning

- **Frame:** Clean the aluminum frame with a mild soap and water solution. Rinse thoroughly with clean water and dry with a soft cloth to prevent water spots. Avoid abrasive cleaners or harsh chemicals.
- **Roof Panels:** The metal hardtop roof can be cleaned with a soft brush or cloth and mild soapy water. Rinse well.
- **Curtains & Netting:** The polyester curtains and lightweight netting can be spot cleaned with mild soap and water. For deeper cleaning, follow the care instructions on the fabric tags, if available. Ensure they are completely dry before storing or tying back to prevent mildew.

4.2 Seasonal Care

- **Winter:** While the hardtop roof is designed for snow load, heavy snow accumulation should be

cleared periodically to prevent excessive stress on the structure. Consider removing curtains and netting for storage during harsh winter months to extend their lifespan.

- **Windy Conditions:** Always ensure the gazebo is securely anchored. In extremely high winds, it is advisable to remove curtains and netting to reduce wind resistance.



TRIANGULAR STRUCTURE

The triangular structure maximizes load-bearing capacity, ideal for long-term outdoor applications

Image: The gazebo depicted in different weather conditions (sun, rain, wind, snow), illustrating its all-weather design and durability.

5. TROUBLESHOOTING

This section addresses common issues that may arise during assembly or use.

5.1 Assembly Challenges

- **Missing or Damaged Parts:** If you find any parts missing or damaged upon unboxing, contact Aoodor customer service immediately for assistance. Do not attempt to force damaged parts.
- **Difficulty with Instructions:** While instructions are illustrated, some steps may require careful interpretation. Review the diagrams thoroughly and ensure correct orientation of parts before tightening fasteners. It is often helpful to have a second person assist.
- **Parts Not Fitting:** If parts do not align perfectly, gently check for any bending or manufacturing inconsistencies. Minor adjustments with hand pressure may be possible, but avoid excessive force. If a part is significantly misaligned or defective, contact customer service.

5.2 Operational Issues

- **Curtains/Netting Sticking:** Ensure the tracks are clean and free of debris. Periodically apply a silicone-based lubricant to the tracks if movement becomes stiff.
- **Wind Damage:** If the gazebo experiences strong winds, check all anchor points and frame connections for stability. Ensure curtains and netting are either fully secured or removed to minimize wind resistance.

For any issues not covered here, or if problems persist, please contact Aoodor customer service.

6. SPECIFICATIONS

Feature	Detail
---------	--------

Feature	Detail
Product Dimensions (L x W x H)	132.96" x 117.36" x 108" (11.08 ft. x 9.78 ft. x 9 ft.)
Item Weight	101.5 Pounds
Frame Material	Aluminum with Wood-Grain Finish
Roof Material	Metal Hardtop
Curtain Material	Polyester
Netting Material	Lightweight Mesh
Water Resistance Level	Waterproof
Ultraviolet Light Protection	UV Protection
Assembly Required	Yes
Color	Wooden (Frame)

7. WARRANTY & SUPPORT

Aoodor is committed to providing high-quality products and customer satisfaction. If you encounter any issues with your gazebo, require replacement parts, or have questions regarding assembly or operation, our responsive customer service team is ready to assist you.

7.1 Customer Service

For support, please refer to the contact information provided in your product packaging or visit the official Aoodor website. When contacting support, please have your product model number (10 x 12 ft. Outdoor Hardtop Gazebo) and purchase details readily available.

7.2 Warranty Information

Specific warranty terms and conditions are typically included with your product documentation. Please review these documents for details on coverage, duration, and how to make a warranty claim. Keep your proof of purchase for warranty purposes.