

MARVOWARE BCR-AF1114

MARVOWARE 2-Bike Hitch Rack Instruction Manual

Model: BCR-AF1114

1. INTRODUCTION

Thank you for choosing the MARVOWARE 2-inch Hitch Bike Rack. This manual provides detailed instructions for the safe assembly, operation, and maintenance of your new bike carrier. Please read this manual thoroughly before installation and use to ensure proper function and safety.

This hitch-mounted bike rack is designed to securely transport two electric bikes or standard bicycles, with a total capacity of 160 lbs. It features a smart tilting mechanism for easy cargo access and an upgraded gear track system for secure bike attachment.



Figure 1.1: MARVOWARE 2-Bike Hitch Rack

2. SAFETY INFORMATION

WARNING: Failure to follow these safety instructions could result in serious injury or property damage.

- Always ensure the bike rack is securely installed on your vehicle's hitch receiver before loading bikes.
- Do not exceed the maximum weight capacity of 160 lbs (80 lbs per bike).
- Verify that all bolts, straps, and securing mechanisms are tightened and engaged before each use and periodically during long trips.
- Ensure proper clearance between the bike rack, bikes, and your vehicle, especially when turning or backing up.
- Be aware of the increased length and width of your vehicle when the bike rack is installed.
- Do not use this rack on RVs or trailers. Refer to the compatibility section for approved vehicle types.

MARVOWARE



2-BIKE RACK

Rugged Platform Carrier
Quiet Driving Without Resonance Noise

Figure 2.1: Vehicle Compatibility (Cars, SUVs, Trucks, Jeeps, Class B small motorhomes, Wagons are compatible; RVs are not compatible)

3. PACKAGE CONTENTS

Before beginning assembly, ensure all parts are present:

- Bike rack frame components
- Wheel cradles and straps
- Adjustable upright arms with gear track
- Anti-wobble threaded bolt
- All necessary hardware (bolts, nuts, washers)
- Assembly guide

4. SETUP AND INSTALLATION

4.1 Assembly

1. Unpack all components and lay them out.
2. Assemble the main frame of the bike rack according to the included assembly guide. Ensure all connections are secure.
3. Attach the wheel cradles to the horizontal bars. These are horizontally adjustable to fit different bicycle and wheel sizes.
4. Install the upright arms with the gear track mechanism.

Upgrade Gear track

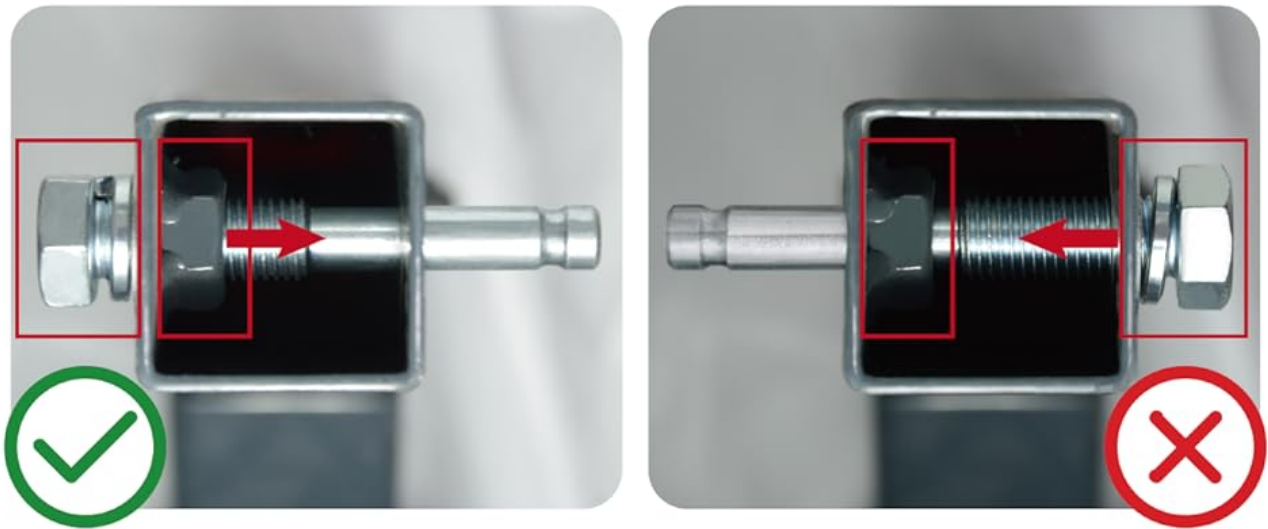
Prevents the hooks slipping and loosening,
Making it safer & more stable to use



Figure 4.1: Horizontally adjustable wheel cradles for various bike sizes.

4.2 Vehicle Installation

1. Insert the hitch arm of the bike rack into your vehicle's 2-inch hitch receiver.
2. Secure the rack to the hitch using the anti-wobble threaded bolt. This bolt is crucial for eliminating shake and movement during transport.
3. Ensure the threaded bolt is installed correctly, with the nut engaging from left to right as shown in the correct installation diagram. Incorrect installation can lead to failure to secure the bolt.



Dear customer, we received a customer review stating there is a problem with threads engaging with welded-in nut when mounting on rack with hitch receiver. Please be informed that correct installation would be very important from left to the right. Reversed installing direction could result in failure to secure bolt with nut. Please read user manual carefully or contact us for help if you have any question, which we'd love to do. We hope our hitch mount bike rack would bring you a pleasant experience.

Figure 4.2: Correct (left) and Incorrect (right) installation of the anti-wobble threaded bolt.

5. OPERATING INSTRUCTIONS

5.1 Loading Bicycles

1. Place the bicycle wheels into the designated wheel cradles on the rack.
2. Adjust the horizontal position of the wheel cradles to fit your bike's wheelbase (35.4" to 49.2").
3. Lower the adjustable upright arm onto the bike frame. The upgraded gear track system prevents slipping.
4. Secure the bike using the gear locking straps on the cradles and the soft, adjustable hooks on the upright arm. Ensure the bike is firmly held and does not wobble.
5. Use the included straps to further secure the wheels, especially the front wheel, to prevent bouncing during transit.

Double Fixed Design



Figure 5.1: Securely loading bikes using wheel cradles and straps.

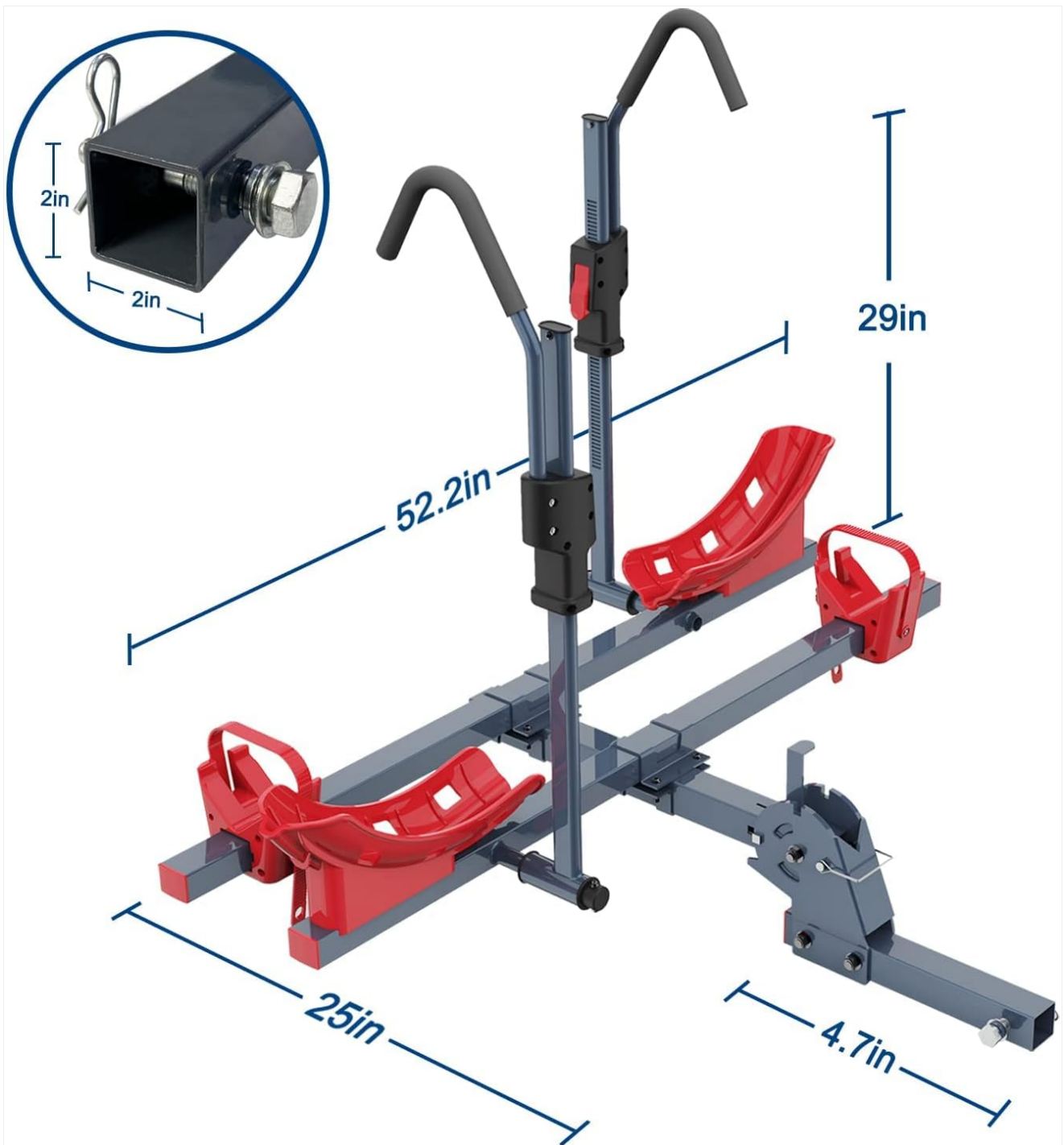


Figure 5.2: Detail of the upgraded gear track for secure arm positioning.

5.2 Smart Tilting Feature

The quick-release and tilt design allows you to swing the carrier down from your vehicle for easy rear cargo access, even when bikes are loaded. To tilt the rack, locate the quick-release mechanism (refer to the assembly guide for exact location) and follow the instructions to safely lower the rack.

Easily Fold Up When Not in Use



Figure 5.3: The rack can tilt down for cargo access.

5.3 Folding for Storage

When not in use, the bike rack can be folded up for convenient storage. Engage the folding mechanism and secure it in the upright position. Always ensure the safety pin is in place when the rack is folded or in transit without bikes.

6. MAINTENANCE

Regular maintenance ensures the longevity and safe operation of your bike rack:

- **Cleaning:** Clean the rack periodically with mild soap and water. Rinse thoroughly and dry to prevent rust.
- **Inspection:** Before each use, inspect all components for signs of wear, damage, or corrosion. Check for loose bolts, cracked plastic parts, or damaged straps.
- **Lubrication:** Apply a small amount of lubricant to moving parts, such as the tilting mechanism and gear track, to ensure smooth operation.
- **Storage:** Store the bike rack in a dry, protected area when not in use to prevent exposure to harsh weather conditions.

7. TROUBLESHOOTING

7.1 Rack Wobbles or Feels Unstable

- **Check Hitch Connection:** Ensure the anti-wobble threaded bolt is fully tightened and correctly installed (refer to Figure 4.2). A loose or improperly installed bolt is a common cause of wobble.
- **Verify Bike Securement:** Confirm that all bike straps and upright arm hooks are tightly secured. Bikes should not have excessive movement on the rack.
- **Inspect Components:** Check for any damaged or bent components on the rack itself. If any structural parts appear compromised, discontinue use and contact customer service.

7.2 Difficulty Tilting or Folding the Rack

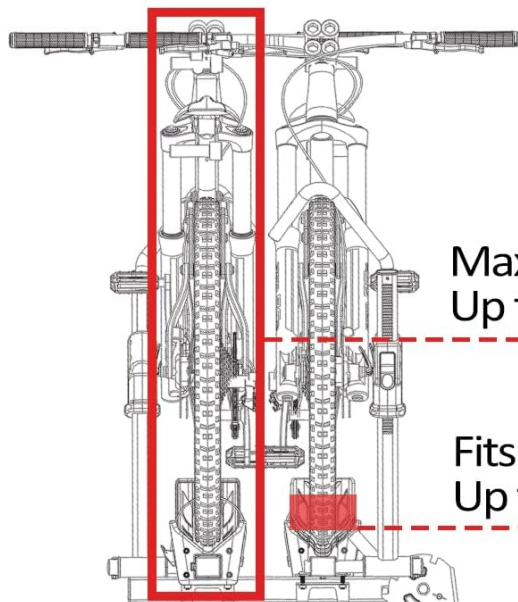
- **Lubrication:** Apply lubricant to the pivot points of the tilting and folding mechanisms.
- **Obstructions:** Check for any debris or obstructions preventing smooth movement.
- **Mechanism Engagement:** Ensure the quick-release levers or pins are fully disengaged before attempting to tilt or fold.

8. SPECIFICATIONS

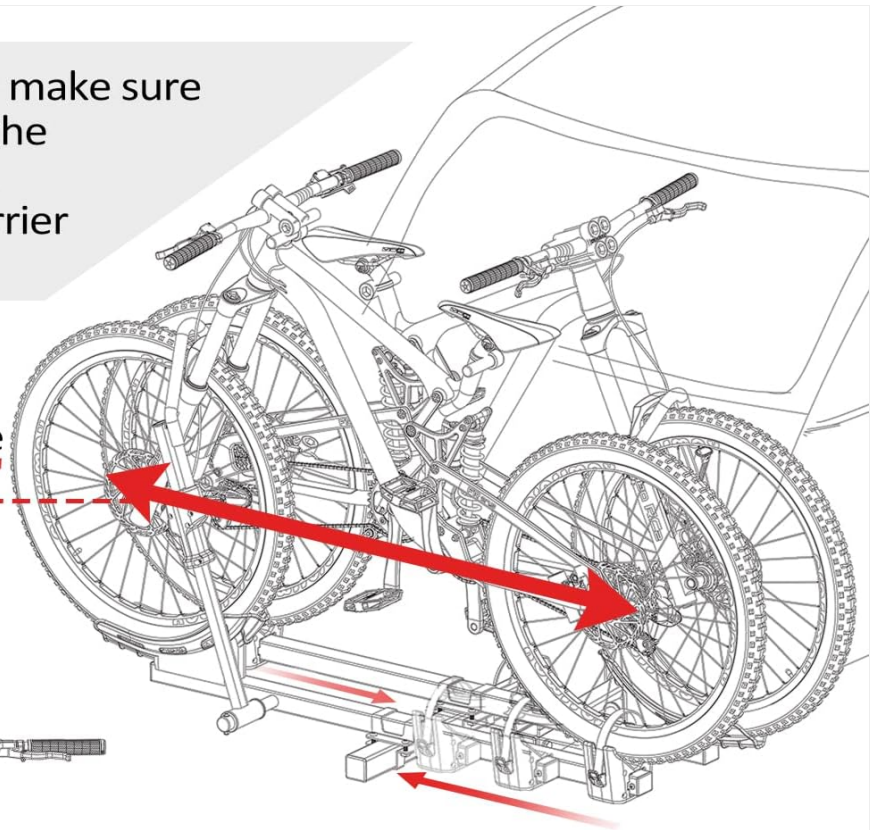
Feature	Specification
Brand	MARVOWARE
Model Number	BCR-AF1114
Capacity	2 Bicycles
Max Load Capacity	160 lbs (80 lbs per bike)
Hitch Receiver Size	2 inches
Compatible Wheel Sizes	16 to 29 inches
Adjustable Wheelbase	35.4 inches to 49.2 inches
Max Tire Width	Up to 5 inches
Item Weight	51.2 pounds
Product Dimensions (L x W x H)	52.2 x 29.7 x 29 inches



Attention! Please make sure your bikes meet the following criteria, otherwise our carrier may not fit:



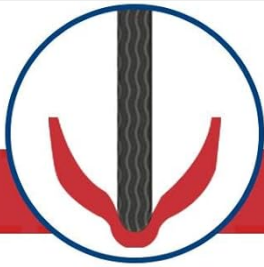
Fits Wheel Base
35.4" to 49.2"



Max Weight Capacity **160 lbs**
Up to **80 lbs** Per Bike

Fits Fat Tires
Up to **5"**

Figure 8.1: Key dimensions and capacity limits.



**Fits Road, Mountain
Bike, Fat Tires
Up To 5" Wide**



Figure 8.2: Compatibility with various tire types, including fat tires up to 5 inches wide.

9. WARRANTY AND SUPPORT

For any missing parts, questions, or support needs, please contact MARVOWARE customer service. Our team is committed to providing a satisfying solution.

You can also refer to the official User Manual (PDF) available for download: [Download User Manual \(PDF\)](#)