

EACHPAI FS8623

EACHPAI Corner Floating Shelves Wall Mounted Set of 4

MODEL: FS8623 - INSTRUCTION MANUAL

1. Introduction

Thank you for choosing the EACHPAI Corner Floating Shelves. This set of four L-shaped shelves is designed to optimize corner spaces, providing functional storage and display areas in various rooms. Crafted from paulownia wood with a rustic finish and supported by matte black metal brackets, these shelves offer both durability and aesthetic appeal. This manual provides essential information for safe installation, proper usage, and maintenance of your new shelves.

2. Important Safety Information

- Always follow the installation instructions carefully to ensure secure mounting.
- Do not exceed the maximum load-bearing capacity of **40 pounds (18.1 kg) per shelf**. Overloading can lead to structural failure and potential injury.
- Ensure the mounting surface (wall) is suitable and strong enough to support the weight of the shelves and their contents. If unsure, consult a professional.
- Keep small parts and hardware out of reach of children to prevent choking hazards.
- Regularly check the shelves for any signs of damage or loose fittings. Tighten screws as needed.

Your browser does not support the video tag.

Video: Demonstration of EACHPAI shelves holding weight. This video illustrates the stability and weight capacity of the shelves when properly installed.

3. Package Contents

Please verify that all components are present before beginning installation:

- 4 x L-shaped Paulownia Wood Shelves
- 8 x Metal Brackets
- 20 x Wall Anchors
- 20 x Long Screws (for wall mounting)
- 20 x Short Screws (for attaching brackets to shelves)
- 1 x Installation Guide

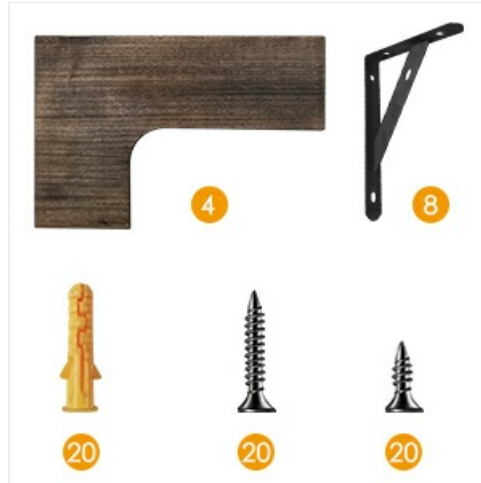


Image: Illustration of all included components for the EACHPAI Corner Floating Shelves.

4. Tools Required (Not Included)

- Pencil
- Measuring Tape
- Level
- Drill
- Phillips Head Screwdriver
- Hammer (for wall anchors)

5. Setup and Installation

Follow these steps to properly install your EACHPAI Corner Floating Shelves:

1. **Plan Placement:** Determine the desired location for each shelf in your corner. Consider the height, spacing, and orientation (the L-shape can be installed with the longer side on the left or right).
2. **Attach Brackets to Shelves:** Place a shelf on a flat surface. Position two metal brackets on the underside of the shelf, aligning them with the pre-drilled holes or your desired placement. Use the shorter screws to securely attach the brackets to the shelf. Ensure the brackets are flush and stable.
3. **Mark Drilling Points:** Hold the assembled shelf against the wall in its intended position. Use a level to ensure it is perfectly horizontal. Mark the drilling points for the wall anchors through the holes in the metal brackets using a pencil.
4. **Drill Holes:** Using a drill, create pilot holes at the marked points. The size of the drill bit should match the diameter of the wall anchors.
5. **Insert Wall Anchors:** Gently tap the wall anchors into the drilled holes with a hammer until they are flush with the wall surface.

6. **Mount Shelves:** Align the holes in the metal brackets with the installed wall anchors. Use the longer screws to fasten the shelves securely to the wall. Tighten until snug, but do not overtighten.
7. **Repeat for Remaining Shelves:** Follow steps 1-6 for each additional shelf, ensuring consistent spacing and alignment for a cohesive look.



Image: Detail of the metal bracket attachment to the paulownia wood shelf.

Your browser does not support the video tag.

Video: An overview of the EACHPAI Floating Shelves set of 4, demonstrating their appearance and potential for arrangement. This video can assist in visualizing the installation process.

Your browser does not support the video tag.

Video: A detailed review and installation guide for the floating shelves, offering practical tips and insights for setup.

6. Operating and Usage

These versatile corner shelves are suitable for various applications:

- **Display:** Ideal for showcasing collectibles, small plants, photo frames, books, and decorative items.
- **Storage:** Utilize in bathrooms for toiletries, kitchens for spices or small jars, or offices for supplies.
- **Space Optimization:** Designed to make full use of otherwise unused corner spaces in bedrooms,

living rooms, bathrooms, kitchens, and offices.



Image: An arrangement of four EACHPAI corner shelves displaying various items, highlighting their decorative potential.



Image: EACHPAI shelves used in a living room setting, demonstrating their integration with home decor.



Image: EACHPAI shelves providing storage and organization in a bathroom environment.



Image: EACHPAI shelves utilized in a kitchen for storing and displaying various items.



Image: EACHPAI shelves enhancing a bedroom corner with additional storage and display space.

7. Maintenance

To maintain the appearance and longevity of your shelves:

- **Cleaning:** Wipe the shelves with a dry, soft cloth to remove dust. For tougher spots, a slightly damp cloth can be used, followed immediately by a dry cloth. Avoid abrasive cleaners or harsh chemicals.
- **Inspection:** Periodically check all screws and mounting hardware to ensure they remain tight and secure.
- **Avoid Moisture:** While suitable for bathrooms, avoid prolonged exposure to excessive moisture to prevent warping or damage to the wood.
- **Protect from Scratches:** Use felt pads under heavy or abrasive items to prevent scratching the shelf surface.



Image: A close-up view of the paulownia wood material, showcasing its texture and finish.

8. Troubleshooting

Problem	Possible Cause	Solution
Shelf is wobbly or not level.	Screws are loose; improper installation; uneven wall surface.	Tighten all mounting screws. Re-check with a level and adjust if necessary. Ensure wall anchors are fully seated.
Shelf falls off the wall.	Overloaded shelf; incorrect wall anchors used; weak wall material.	Ensure weight does not exceed 40 lbs. Verify appropriate anchors for your wall type (drywall, plaster, stud). If wall is too weak, consider mounting to a stud or reinforcing the wall.
Damage to shelf surface.	Impact; abrasive cleaning; excessive moisture.	Avoid dropping heavy objects. Use soft cloths for cleaning. Protect from spills and high humidity. Minor scratches may be touched up with wood stain.

9. Specifications

Feature	Detail
Model Number	FS8623
Quantity	Set of 4 shelves
Material	Paulownia Wood
Dimensions (each shelf)	11.4"D x 16"W x 0.6"H (28.96 cm D x 40.64 cm W x 1.52 cm H)
Weight Capacity (per shelf)	40 lbs (18.1 kg)
Color	Brown (Rustic Torched Wood Finish)
Bracket Material	Metal (Matte Black Finish)

Feature	Detail
Installation Type	Wall Mount

10. Warranty and Support

For any questions, concerns, or support regarding your EACHPAI Corner Floating Shelves, please contact EACHPAI customer service through the platform where you purchased the product. Please have your order details and model number (FS8623) available for faster assistance.