

## FECiDA GL-CR600

# FECiDA LED Grow Light Instruction Manual

Model: GL-CR600 | Brand: FECiDA

### INTRODUCTION

This manual provides detailed instructions for the setup, operation, and maintenance of your FECiDA LED Grow Light. Designed for optimal plant growth, this full-spectrum light offers dimmable control and daisy-chain functionality for various indoor gardening needs. Please read this manual thoroughly before operating the device.

### KEY PRODUCT FEATURES

- **Higher Output & More Harvest:** 12.4"x8.4" size, 65 Watt rated power, 6000 Lumen output. Delivers significantly higher output compared to other 60 Watt LED Grow Lights marketed as 600W.
- **Stepless Dimming Function:** Adjust the brightness and output from 0-100% for different growth stages without needing to change hanging height. This feature saves electricity and simplifies operation.
- **Versatile Application:** Suitable for all indoor gardens, including grow tents. Two 65 Watt units are ideal for a 2x2ft grow tent for all growth stages, providing excellent coverage and uniform lighting.
- **Daisy Chain Function:** The power cable doubles as a daisy chain cable, allowing you to connect up to 8 units of the 65 Watt LED grow light from a single power source, simplifying wiring for larger setups.
- **Built-in Cooling System:** Features quiet built-in fans, an aluminum case, and vents in the LED board for efficient heat dissipation, ensuring stable performance and longevity.

### PACKAGE CONTENTS

The FECiDA LED Grow Light package includes the following items:

- 1 x LED Grow Light CR600
- 1 x Power Cable
- 1 x Hanging Kits

- 1 x Rope Hanger
- 1 x User Manual



This image displays all components included in your FECiDA LED Grow Light package, ensuring you have everything needed for setup.

**TECHNICAL SPECIFICATIONS**

Specification	Value
Model	GL-CR600
Rated Power	65 Watt

Input Voltage	AC100V-240V
Number of LEDs	576 PCS
Waterproof Rating	IP44
Product Size	12.4"L x 8.4"W x 1.8"H
Net Weight	2.97 pounds (1.35 Kilograms)
Material	Aluminum
Light Source Type	Light Emitting Diode
Bulb Features	Dimmable
Mounting Type	Hanging Mount

## SETUP INSTRUCTIONS

### 1. Hanging the Grow Light

The FECiDA LED Grow Light comes with hanging kits and a rope hanger for easy installation. Attach the hanging wires to the four corners of the light fixture and connect them to the provided rope ratchet. Use the rope ratchet to adjust the hanging height from your grow tent or desired area.

# DIMMABLE & DAISY CHAIN FUNCTION



Light Switch



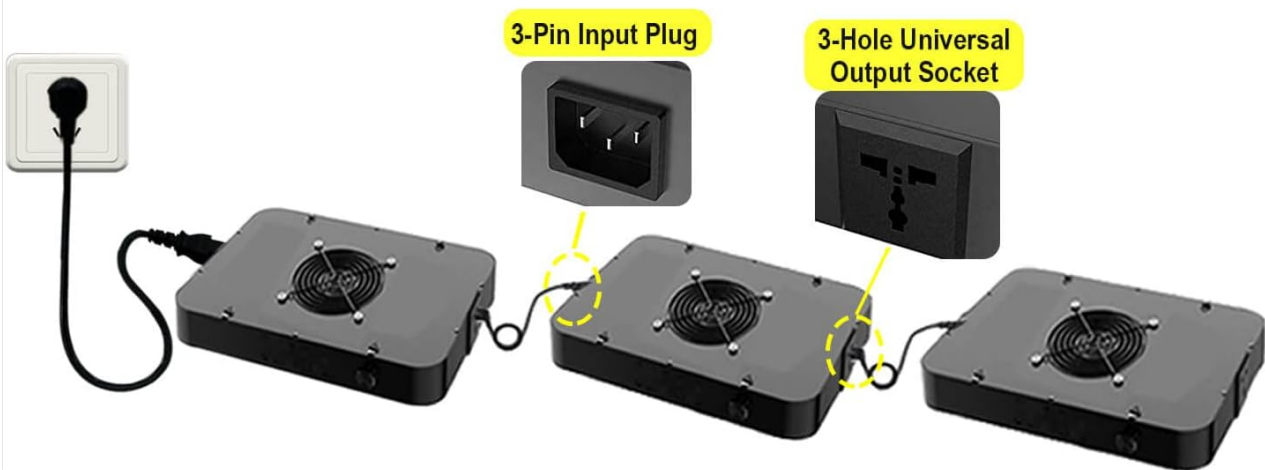
LED Intensity



PPFD



Actual Power



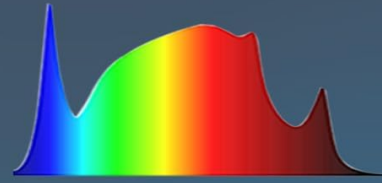
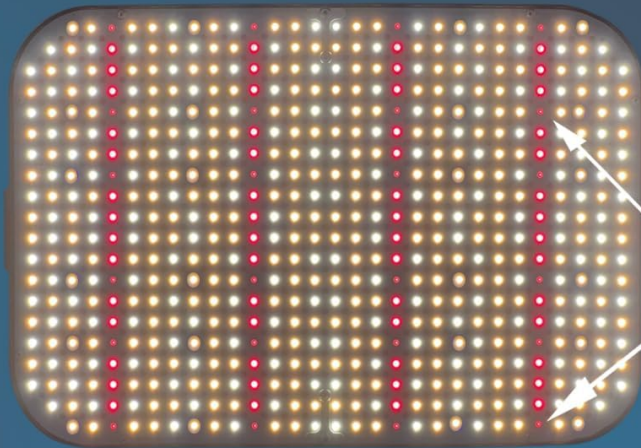
This image shows the grow light suspended by its hanging wires, demonstrating proper installation for optimal light distribution.

## 2. Daisy Chain Functionality

The included power cable also functions as a daisy chain cable, allowing you to connect multiple FECiDA grow lights from a single power source. This simplifies wiring for larger setups.

- Connect the first grow light to your home electricity using one power cable.
- For additional lights, use another power cable to connect them in series.
- You can connect a maximum of 8 units of the 65 Watt LED grow light together.

## IR Included, Ideal Full Spectrum



### IR LEDs

IR LEDs are much dimmer than RED LEDs. It is normal.

### IR Light(730nm):



Speeds up the Phytochrome conversion, allowing plants to produce a greater yield, IR is dimmer than other red lights.



### Warm White Light(3000K):

Boosts plants bloom, making flowers bigger and vivid.

### RED Light(660nm):



Yields more leaves and crops when combined with blue light.



### Blue Light(5000K):

Promotes plants germination, increasing the growth rate of plants.

This diagram demonstrates how to link multiple grow lights using the daisy chain feature, simplifying wiring for larger setups.

## OPERATING INSTRUCTIONS

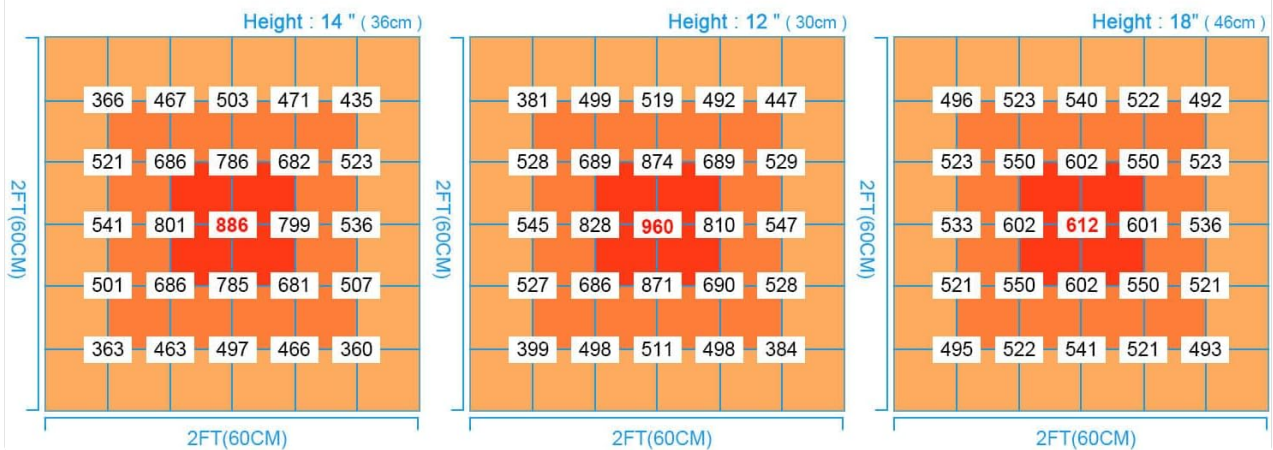
### Dimming Function

The FECiDA LED Grow Light features a stepless dimming function, allowing you to precisely control the light intensity from 0% to 100%. This eliminates the need to constantly adjust the hanging height for different plant growth stages.





## CR600 PPFD MAP



Rotate the dial on the side of the light fixture to adjust the brightness. Settings are clearly marked for easy selection.

### Recommended Settings for Growth Stages

Optimize your plant's growth by following these recommended light settings:

Growth Stage	Hanging Height	Brightness
Seed Starting / Seedlings	35-45 cm (14-18 inches)	30%-40%
Growing (Vegetative Stage)	35-45 cm (14-18 inches)	60%-70%
Flowering	35-45 cm (14-18 inches)	90%-100%

# STRONG COOLING SYSTEM

- ✓ Quiet Built-in Fan
- ✓ Aluminum Case
- ✓ Vents in LED Board



These tables provide a comprehensive guide for adjusting your grow light's height and intensity to suit various stages of plant development, from seed starting to flowering.

## CARE AND MAINTENANCE

- **Cleaning:** Regularly wipe the light fixture with a dry, soft cloth to remove dust and debris. Always ensure the light is unplugged before cleaning.
- **Fan Inspection:** Periodically check the cooling fans on the top of the unit for any obstructions or excessive noise. Keep the fan grilles clear to ensure proper airflow and prevent overheating.
- **Connection Check:** Ensure all power cables and daisy chain connections are secure and free from damage. Loose connections can lead to performance issues or safety hazards.
- **Storage:** If storing the light for an extended period, unplug it, clean it thoroughly, and store it in a cool, dry place away from direct sunlight and moisture.





The built-in quiet fans and aluminum casing ensure efficient heat dissipation, keeping the light cool during operation. Regular cleaning of the fan grilles is recommended.

## TROUBLESHOOTING

### Light Not Turning On

- Check if the power cable is securely plugged into both the light fixture and the power outlet.
- Ensure the dimming dial is not set to "OFF" or 0%.
- Verify the power outlet is functional by plugging in another device.

### Dimming Function Not Working

- Ensure the dial is clean and free from obstructions.
- Rotate the dial fully from minimum to maximum to reset the internal mechanism.

### Excessive Fan Noise

- Check for any debris or dust accumulated on the fan blades or grilles. Clean carefully if necessary.



- Ensure the light is hanging level to prevent uneven fan operation.

## WARRANTY AND CUSTOMER SUPPORT

FECiDA is committed to providing excellent customer service and offers a 100% After-Sale Service for your product.

- If you encounter any problems with your FECiDA LED Grow Light, please contact customer support immediately.
- You can reach us via Amazon online message through your purchased link or visit the official FECiDA website for support.
- Our team aims to respond and resolve your issues within 24 hours.

For more information and product registration, please visit the official FECiDA website: [www.fecida.com](http://www.fecida.com)