

[Manuals.plus](#) /

> [TOPGREENER](#) /

> TOPGREENER Dimmer Light Switch (Model TGDMS-120-LA) Instruction Manual

## TOPGREENER TGDMS-120-LA

# TOPGREENER Dimmer Light Switch (Model TGDMS-120-LA) Instruction Manual

## 1. PRODUCT OVERVIEW

---

The TOPGREENER Dimmer Light Switch (Model TGDMS-120-LA) is designed to provide smooth, full-range dimming for various lighting types. It is compatible with 300W dimmable LED/CFL lights and 600W incandescent/halogen bulbs. This switch supports both single-pole and 3-way applications and does not require a neutral wire for installation, making it suitable for older homes. A wall plate is included for a complete installation.

*Kalide*

## Widespread Compatibility



*DIMMABLE LED Bulbs*



*DIMMABLE CFL Bulbs*



*Incandescent & Halogen Bulbs*



Image 1.1: The dimmer switch is compatible with dimmable LED, CFL, incandescent, and halogen bulbs.

## 2. SAFETY INFORMATION

---

**WARNING:** To avoid fire, shock, or death, turn off power at the circuit breaker or fuse box and test that power is off before wiring. Installation should be performed by a qualified electrician or a person with electrical knowledge. Use only with copper wire. Do not use with non-dimmable bulbs or smart lighting fixtures. This device is UL Listed, ensuring compliance with safety standards.

## 3. PACKAGE CONTENTS

---

- TOPGREENER Dimmer Light Switch (Model TGDMS-120-LA)
- Wall Plate
- Installation Screws

## 4. SPECIFICATIONS

---

Specification	Value
Model	TGDMDS-120-LA
Brand	TOPGREENER
Wattage (LED/CFL)	300W
Wattage (Incandescent/Halogen)	600W
Operating Voltage	120 Volts (AC)
Current Rating	5 Amps
Circuit Type	Single-pole or 3-way
Neutral Wire Required	No
Wire Compatibility	#14-#12 AWG (copper only)
Material	Polycarbonate
Certification	UL Listed, IP54

## 5. INSTALLATION

---

### 5.1 Pre-Installation Steps

- Turn off Power:** Locate the circuit breaker or fuse box that controls the light switch you are replacing. Turn off the power to that circuit. Verify that the power is off using a voltage tester.
- Remove Old Switch:** Carefully remove the existing wall plate and unscrew the old switch from the wall box. Disconnect the wires from the old switch.

### 5.2 Wiring the Dimmer Switch

This dimmer switch does not require a neutral wire. Ensure you are using #14-#12 AWG copper wires for connections.



## Memory Paddle ON/OFF Design

*Directly turn on the dim level that you set last time*

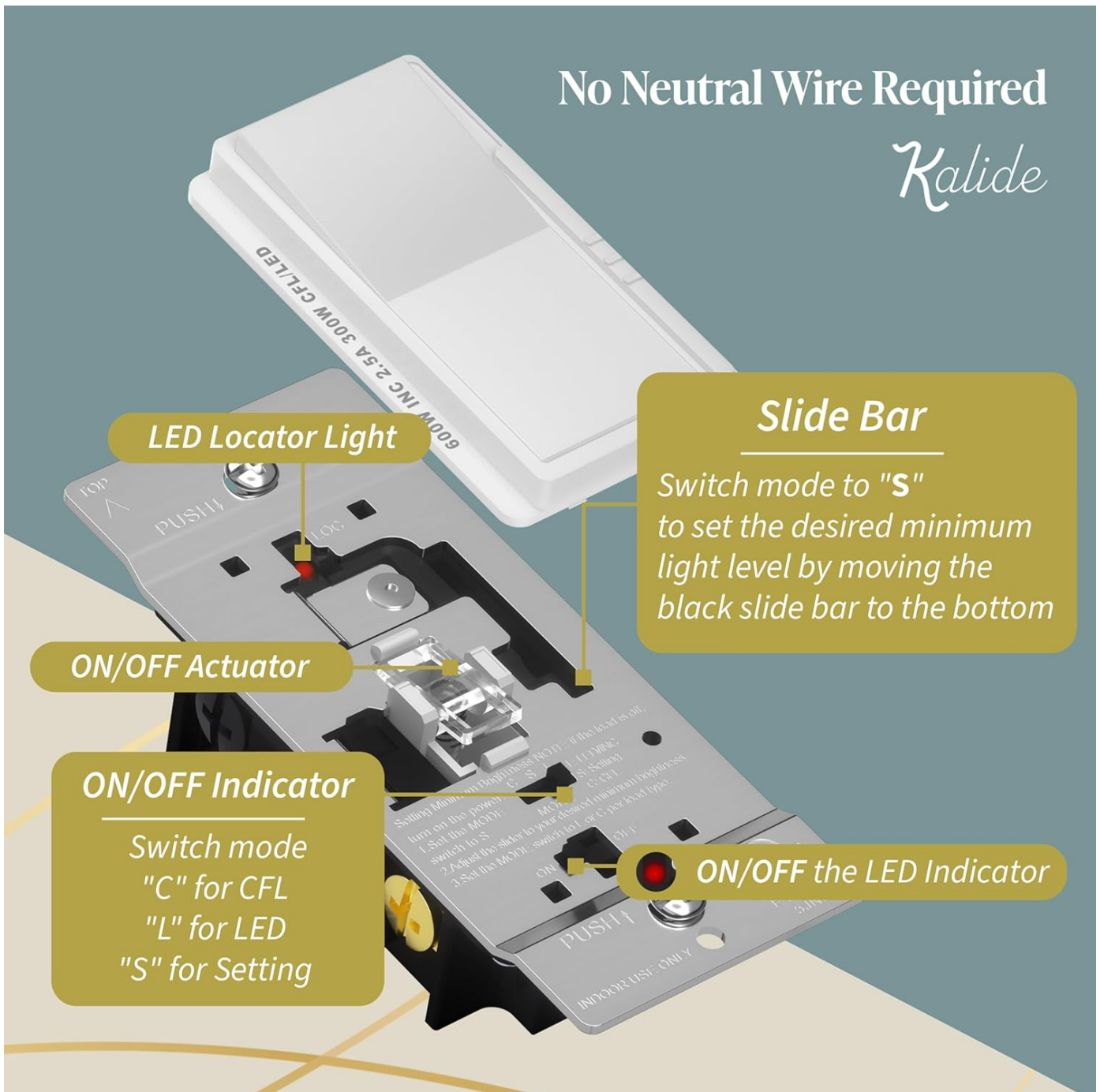
Image 5.1: The dimmer switch does not require a neutral wire, simplifying installation in many homes.

Refer to the wiring diagram provided with your dimmer switch for specific connections. Generally, connect the hot wire, load wire, and traveler wire (for 3-way applications) to the corresponding terminals on the dimmer. Connect the ground wire to the green ground screw.

### 5.3 Setting Minimum Brightness (Optional)

The dimmer includes a small slider for setting the minimum brightness level to prevent flickering with certain LED/CFL bulbs. This adjustment is made before installing the face cover.

1. With the load off, turn on the power.
2. Set the MODE switch to 'S' (Setting).
3. Adjust the small slider to your desired minimum brightness.
4. Set the MODE switch back to 'L' (LED/INC) or 'C' (CFL) per your load type.



No Neutral Wire Required

*Kalide*

**LED Locator Light**

**Slide Bar**

Switch mode to "S" to set the desired minimum light level by moving the black slide bar to the bottom

**ON/OFF Actuator**

**ON/OFF Indicator**

Switch mode  
"C" for CFL  
"L" for LED  
"S" for Setting

**ON/OFF the LED Indicator**

Image 5.2: Internal components of the dimmer switch, highlighting the mode switch and minimum brightness slider.

## 5.4 Final Installation Steps

1. **Secure the Switch:** Carefully push the wired dimmer switch into the wall box and secure it with the provided screws.
2. **Install Face Cover:** Use a screwdriver to remove the face cover. Move the face cover out. Insert the top tabs of the face cover into the slots on the top of the dimmer. Press the bottom of the face cover until it snaps into place.
3. **Restore Power:** Turn the power back on at the circuit breaker or fuse box.

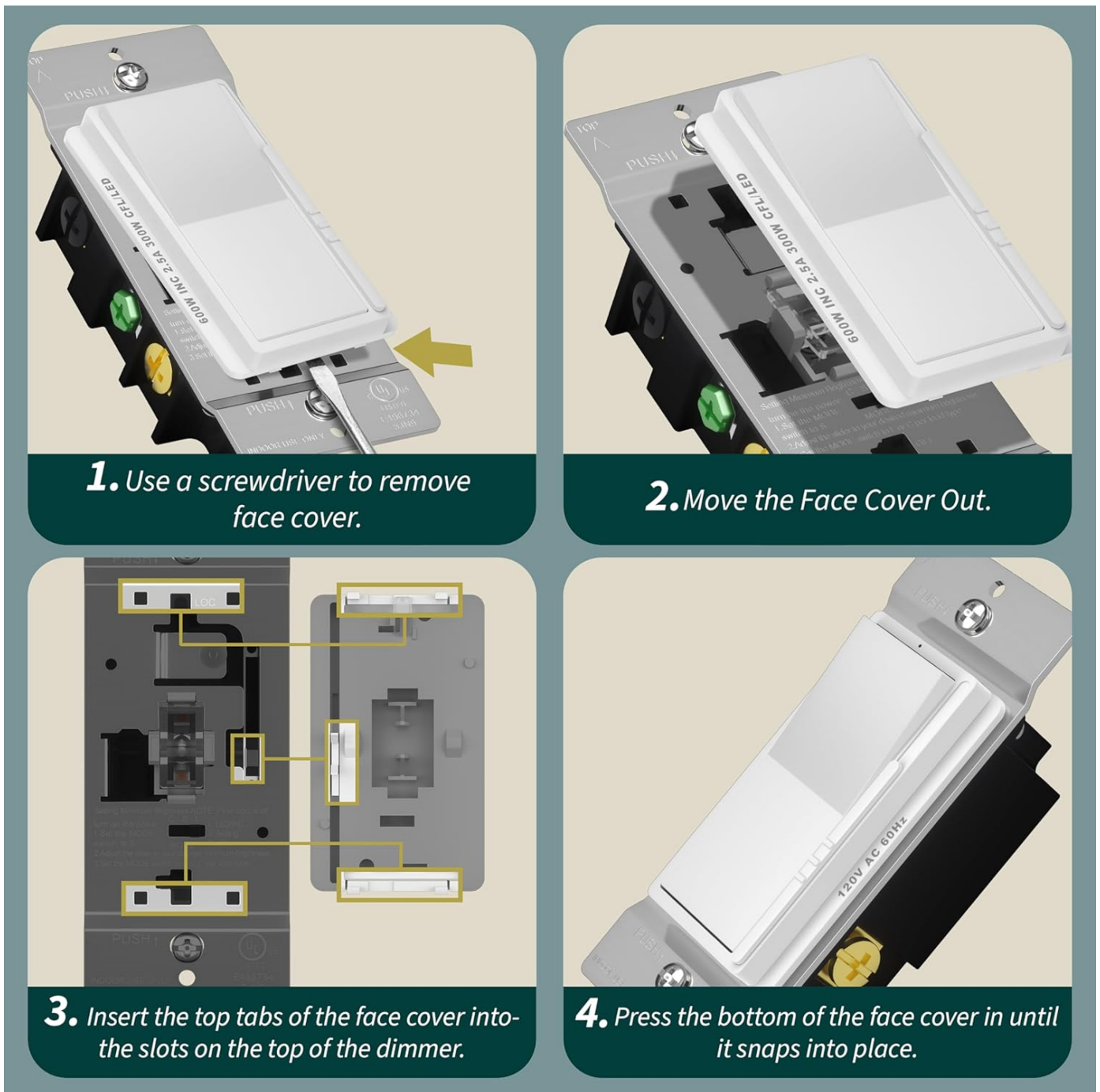


Image 5.3: Steps for installing the face cover onto the dimmer switch.

## 5.5 Installation Video

Your browser does not support the video tag.

Video 5.1: Official TOPGREENER video demonstrating the features and installation of the dimmer light switch.

Your browser does not support the video tag.

Video 5.2: A seller-provided video showing how to adjust the minimum brightness setting on the dimmer switch.

## 6. OPERATION

### 6.1 ON/OFF Control

The large paddle switch functions as a simple ON/OFF control. Press the top of the paddle to turn the lights ON, and the bottom to turn them OFF.



Image 6.1: The large paddle provides comfortable ON/OFF control.

## 6.2 Dimming Control

Use the small slider on the side of the paddle to adjust the brightness level. Slide it up for brighter light and down for dimmer light. The dimmer features a memory function, returning to the last set dim level when turned on.



Image 6.2: Adjusting the light intensity using the smooth slider on the dimmer switch.

### 6.3 Locator Light

The dimmer includes an optional red locator light. By factory setting, this light is ON when the main light is switched OFF, making it easy to locate the switch in the dark. The locator light can be switched off if desired.



## Easy to Locate

*LED indicator automatically turns on when load is off*

Image 6.3: The LED indicator light helps locate the switch in low light conditions.

## 7. MAINTENANCE

---

To clean the dimmer switch, ensure power is turned off at the circuit breaker. Wipe the surface with a soft, damp cloth. Do not use abrasive cleaners or solvents, as these may damage the polycarbonate material. The polycarbonate thermoplastic material provides durability and resistance to heat and fading.

## 8. TROUBLESHOOTING

---

### 8.1 Lights Flicker or Do Not Dim Properly

- **Bulb Compatibility:** Ensure all connected bulbs are explicitly labeled as "dimmable." Non-dimmable bulbs will not function correctly and may flicker or be damaged.
- **Minimum Brightness Setting:** Adjust the minimum brightness slider (refer to Section 5.3) to optimize performance and eliminate flickering at low light levels.

- **Load Type:** Verify the MODE switch (L for LED/INC, C for CFL) is set correctly for your bulb type.
- **Wattage Overload:** Confirm that the total wattage of connected bulbs does not exceed the dimmer's maximum rating (300W for LED/CFL, 600W for incandescent/halogen).
- **Wiring:** Double-check all wiring connections for tightness and correctness. Loose connections can cause intermittent operation or flickering.

## 8.2 Lights Do Not Turn On/Off

- **Power Supply:** Check the circuit breaker or fuse box to ensure power is supplied to the switch.
- **Wiring:** Inspect all wiring connections to ensure they are secure and correctly installed.
- **Bulb Functionality:** Test the bulbs in another fixture to confirm they are working.

## 9. WARRANTY

---

This TOPGREENER Dimmer Light Switch comes with a 1-year warranty from the date of purchase. Please retain your proof of purchase for warranty claims. The warranty covers defects in materials and workmanship under normal use. It does not cover damage caused by improper installation, misuse, abuse, or unauthorized modifications.

## 10. SUPPORT

---

For further assistance, technical support, or warranty inquiries, please contact TOPGREENER customer service. Visit the official TOPGREENER website or refer to the contact information provided with your product packaging.

