

## Manuals+

[Q & A](#) | [Deep Search](#) | [Upload](#)

manuals.plus /

- › [Woox](#) /
- › [WOOX R6073 Smart Wi-Fi Double Plug Instruction Manual](#)

## Woox R6073

# WOOX R6073 Smart Wi-Fi Double Plug Instruction Manual

MODEL: R6073

### Introduction

This manual provides comprehensive instructions for the installation, operation, and maintenance of your WOOX R6073 Smart Wi-Fi Double Plug. Please read this manual thoroughly before using the product to ensure safe and efficient operation.

### Important Safety Information

- Ensure the product is used within its specified electrical ratings (Max. 16A, 230V, 3680W).
- Do not disassemble or modify the device.
- Avoid exposure to water or humid environments. The product has an IP20 rating, meaning it is not protected against water.
- Keep out of reach of children.
- Do not connect appliances that exceed the maximum load capacity.
- For indoor use only.

### Package Contents

- 1 x WOOX R6073 Smart Wi-Fi Double Plug
- 1 x User Manual (this document)

### Product Overview

The WOOX R6073 is a smart Wi-Fi double plug designed to control two electrical appliances independently or simultaneously via a smartphone application. It features two power outlets and a manual power button.



Image: WOOX R6073 Smart Wi-Fi Double Plug, angled view showing both sockets and the main plug.

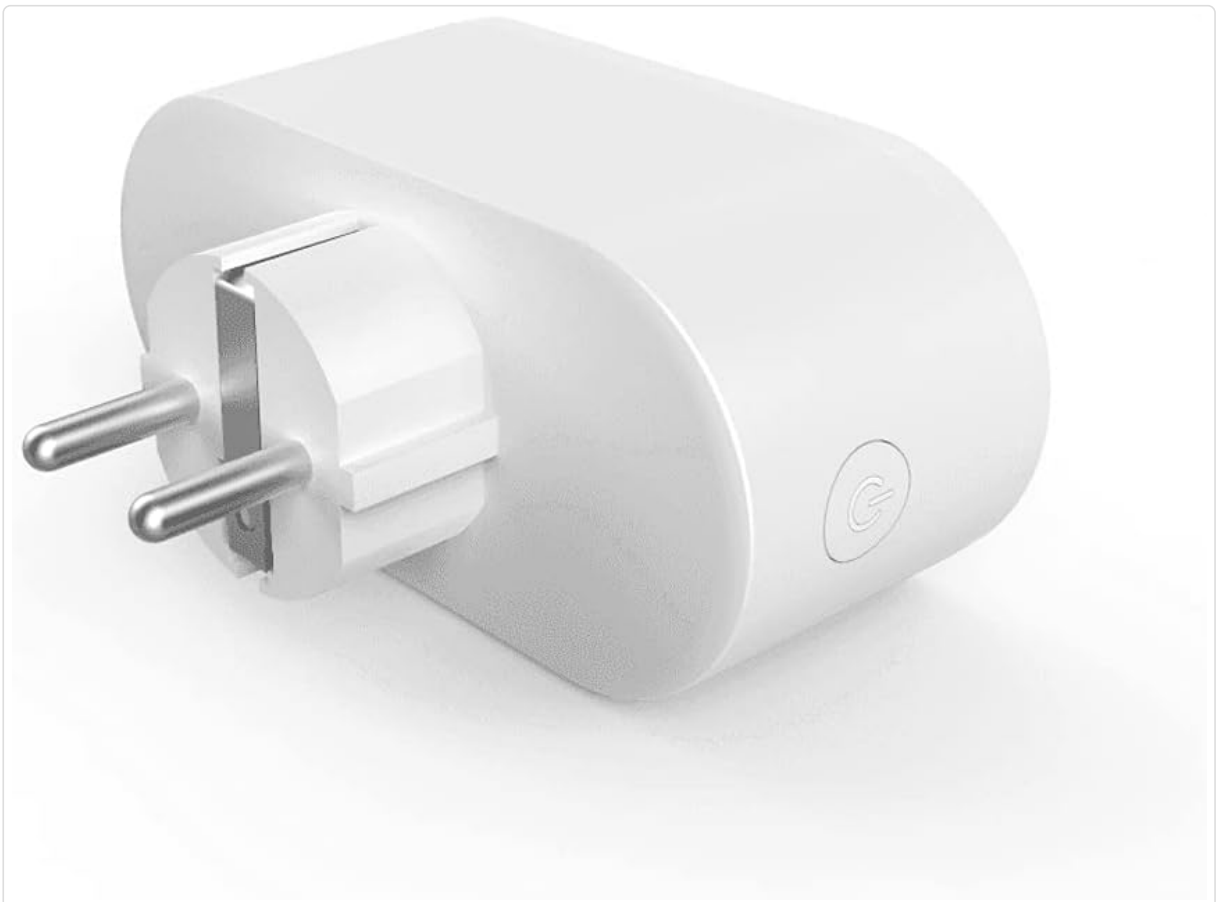


Image: Side view of the WOOX R6073 plug, highlighting the manual power button and the plug pins.

## Setup Instructions

### 1. Download the Woon Home App

1. Search for "Woon Home" in your smartphone's app store (iOS App Store or Google Play Store).
2. Download and install the "Woon Home" application.
3. Register for a new account or log in if you already have one.

### 2. Connect the Smart Plug

1. Plug the WOOX R6073 Smart Wi-Fi Double Plug into a standard wall socket.



Image: The WOOX R6073 plug inserted into a wall outlet, with a smartphone displaying the Woon Home app interface for control.

2. Ensure your smartphone is connected to a 2.4 GHz Wi-Fi network. The device does not support 5 GHz Wi-Fi.
3. Open the Woon Home app. Tap the "+" icon in the top right corner to add a new device.
4. Select "Electrical Outlet" or "Smart Plug" from the device list.
5. Follow the on-screen instructions to put the device into pairing mode. This usually involves pressing and holding the power button on the plug for a few seconds until an indicator light flashes rapidly.
6. Confirm the indicator light is flashing rapidly in the app.
7. Enter your Wi-Fi network password.
8. Wait for the device to connect. Once connected, you can rename the plug and its individual sockets within the app.

## Operating Instructions

### Manual Control

Each socket on the WOOX R6073 can be manually turned on or off by pressing the physical power button located on the side of the plug. The LED indicator will show the status of the sockets.

### App Control

- **On/Off Control:** Open the Woon Home app, select your R6073 plug, and tap the respective switch icons to turn each socket on or off independently.

- **Scheduling:** Use the scheduling feature in the app to set timers for when the sockets should turn on or off automatically. This can help with energy efficiency.
- **Energy Monitoring:** The app may provide real-time energy consumption monitoring for connected devices, allowing you to track usage.
- **Remote Access:** Control your devices from anywhere with an internet connection via the Woon Home app.

## Maintenance

- **Cleaning:** Disconnect the plug from the power outlet before cleaning. Use a soft, dry cloth to wipe the surface. Do not use liquid cleaners or sprays.
- **Storage:** Store the device in a cool, dry place away from direct sunlight and extreme temperatures when not in use for extended periods.

## Troubleshooting

### Device not connecting to Wi-Fi:

Ensure your Wi-Fi network is 2.4 GHz. Check your Wi-Fi password. Move the plug closer to your Wi-Fi router. Try resetting the plug by unplugging it and plugging it back in, then re-entering pairing mode.

### App not controlling the plug:

Verify your phone has an active internet connection. Ensure the plug is powered on and connected to Wi-Fi. Close and reopen the Woon Home app. If issues persist, try re-pairing the device.

### Plug not powering connected devices:

Check if the plug is turned on via the app or manual button. Ensure the connected device is functioning correctly and its power cable is securely plugged into the smart plug. Verify the total power consumption does not exceed 3680W.

## Technical Specifications

Feature	Specification
Model	R6073
Brand	Woon
Material	Polycarbonate (PC), UL94 V0 750 °C flame retardant
Input Voltage	AC 230V
Frequency	50/60 Hz
Max Load	16A, 3680W
Wi-Fi Standard	2.4 GHz 802.11 b/g/n
Wi-Fi Frequency Range	2.4 – 2.472 MHz
Wi-Fi Transmission Power	13.18 dBm
Wi-Fi Range	30 meters (open area)
Operating Temperature	0 – 35 °C
Storage Temperature	-10 – 60 °C

Protection Rating	IP20
Dimensions (L x W x H)	10.5 x 5 x 6 cm
Weight	70 grams

### **Warranty and Support**

For warranty information and technical support, please refer to the official WOOX website or contact their customer service directly. Keep your purchase receipt for warranty claims.