

## Barkan BM443LP

# Barkan Full Motion TV Wall Mount Instruction Manual

Model: BM443LP

## INTRODUCTION

---

This manual provides detailed instructions for the safe and proper installation, operation, and maintenance of your Barkan Full Motion Articulating TV Wall Mount, Model BM443LP. This mount is designed for flat and curved screens ranging from 13 to 83 inches and supports weights up to 95 lbs (43 kg). It offers four movements: rotation, folding, swivel, and tilt, allowing for optimal viewing angles.

## SAFETY INFORMATION

---

Please read all instructions carefully before installation. Incorrect assembly or use may result in property damage or personal injury. Ensure you have all necessary tools and hardware before beginning. If you are unsure about any part of the installation, consult a qualified professional.

- **Weight Capacity:** Do not exceed the maximum weight capacity of 95 lbs (43 kg).
- **Screen Size:** Compatible with screens from 13 to 83 inches.
- **Wall Type:** Ensure the wall structure can safely support the combined weight of the mount and the TV. Refer to the "Wall Compatibility" section for details.
- **Hardware:** Use only the provided hardware or suitable alternatives as specified. If your TV requires different screen-connection screws, purchase them from a local hardware store or contact Barkan support.

# Greatest value for money



Figure 1: Key features including lifetime warranty, safety testing, and cable management.

## PACKAGE CONTENTS

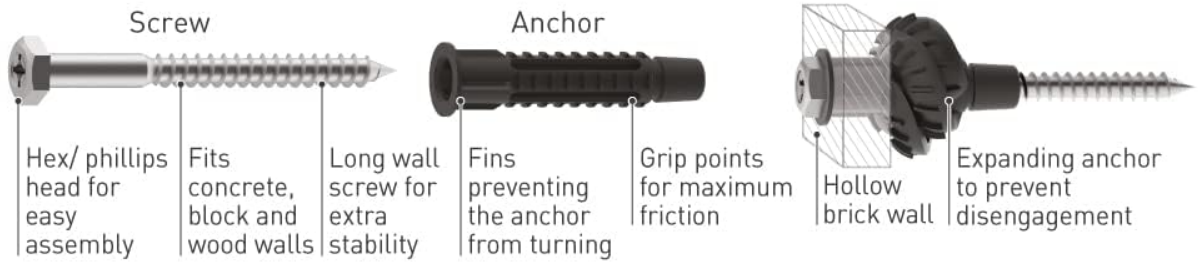
Verify that all components are present before starting the installation. The package includes:

- TV Mount
- Hardware Kit (various screws, anchors, washers, spacers)
- Assembly Instructions

# Quality & Safety Above All It all starts from the smallest detail...

## High quality hardware

Where safety and quality are top priorities, we have developed our own unique wall anchor and screws



## Barkan's Hardware Kit

Divided and marked hardware kit for easy orientation throughout the assembly process



TV screws compatible with 90% of popular TVs

If your screen requires different screen-connection screws, please purchase them in your local hardware store or contact us at [sales.usa@barkanmounts.com](mailto:sales.usa@barkanmounts.com)

Figure 2: Barkan's Hardware Kit, including wall mounting hardware and TV mounting screws.

## SPECIFICATIONS

Feature	Detail
Mounting Type	Wall Mount
Movement Type	Articulating, Rotate, Swivel, Tilt
Compatible Screen Sizes	13 - 83 inches
Maximum Load Capacity	95 lbs (43 kg)
VESA Compatibility	75x75, 100x100, 100x200, 200x100, 200x200, 200x300, 300x300, 300x400, 400x200, 400x300, 400x400, 400x600, 600x300, 600x400 mm (and non-VESA up to 600x400 mm)

Feature	Detail
Minimum Distance from Wall	3.1 inches (8 cm)
Maximum Extension from Wall	26 inches (66 cm)
Tilt Angle	-5° to +15°
Swivel Angle	Up to 180° (near screen connection plate)
Rotation	180° (near wall), 360° (fold)
Material	Metal
Color	Black

## Specifications & Backscreen VESA connection

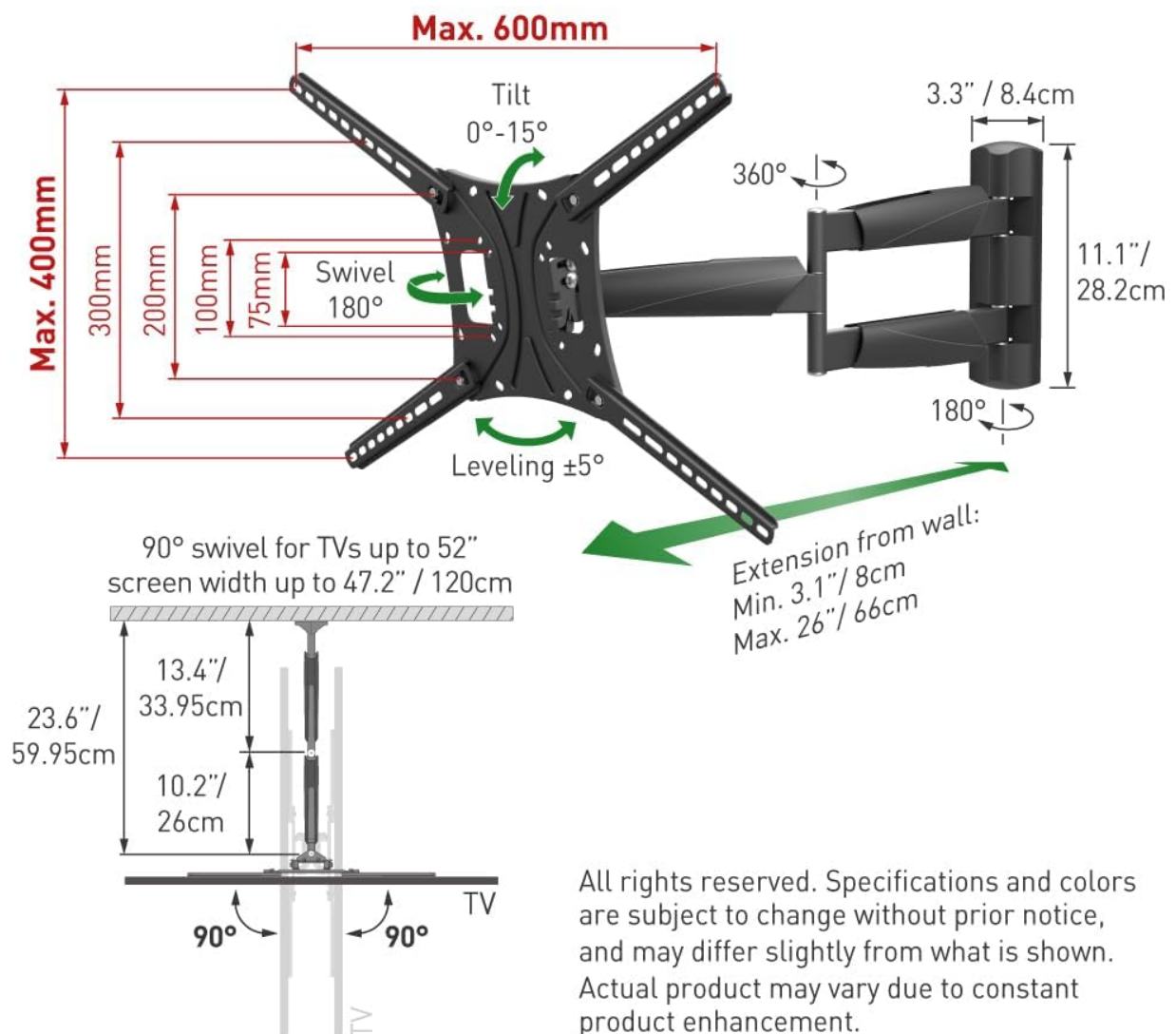


Figure 3: Detailed specifications and VESA connection diagram.

# Fits various screen types

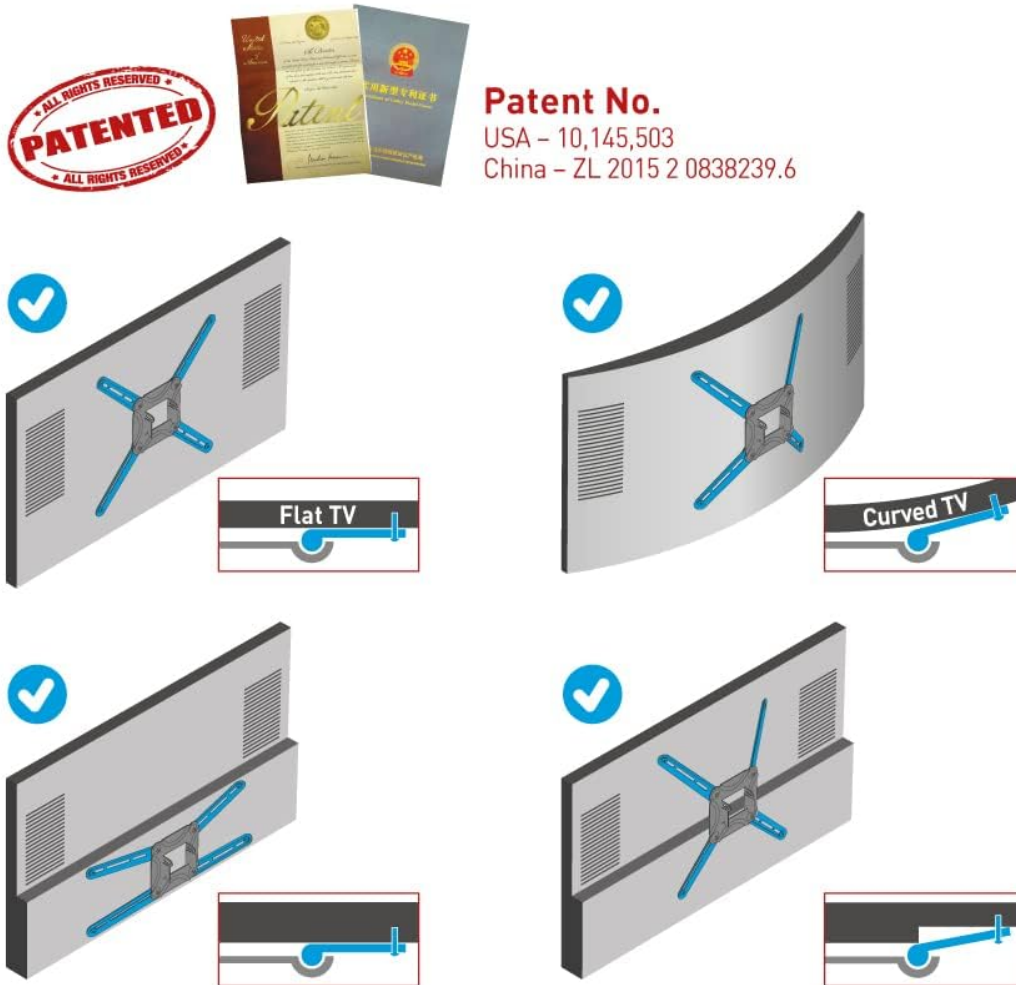


Figure 4: Compatibility with flat and curved screen types.

## SETUP AND INSTALLATION

### Wall Compatibility

The mount is compatible with the following wall types:

- Drywall with wood studs
- Concrete blocks / Concrete wall

**Note:** Not suitable for drywall/gypsum/plaster walls without studs.

### Required Tools


Before installation, ensure you have the following tools:

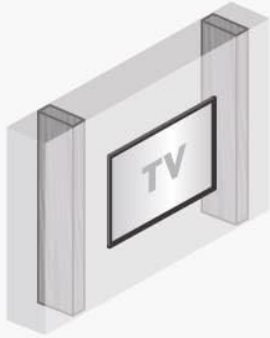
- Drill (1/4" - 6mm and 3/8" - 10mm bits for concrete/wood, 5/32" - 4mm for wood)
- Level
- Safety glasses
- Stud finder (for drywall with wood studs)



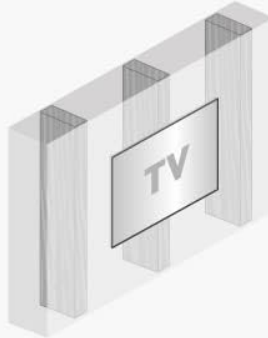
Included in the packaging are **assembly instructions, warnings and safety instructions**. If they are missing, you are required to download them from our website and to assemble precisely according to them.

## Wall compatibility

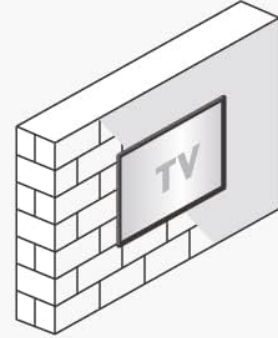
 Drywall/  
gypsum/  
plaster



 Drywall with  
**wood studs**



 Concrete blocks/  
concrete wall



## Required

Drill



1/4" – 6mm

3/8" – 10mm



5/32" – 4mm



Level



Safety glasses



Stud finder



Figure 5: Wall compatibility and necessary tools for installation.

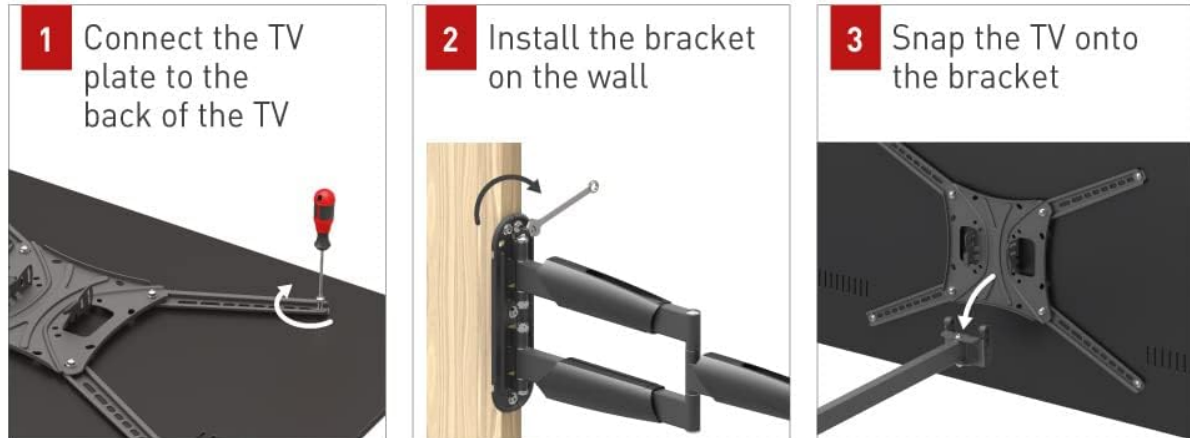
## Assembly Steps

Follow these general steps for assembly. A drilling template is included for easy and accurate installation.

1. **Connect the TV plate to the back of the TV:** Attach the adapter plates to the VESA mounting holes on the rear of your television using the appropriate screws from the hardware kit.
2. **Install the bracket on the wall:** Securely mount the wall bracket to your chosen wall location, ensuring it is level and using the correct anchors and screws for your wall type.
3. **Snap the TV onto the bracket:** Carefully lift the TV with the attached plates and hook it onto the wall bracket. Ensure it is securely seated and locked into place.

## Additional value for money

Easy assembly **As easy as 1-2-3**



Drilling template included

- ✓ Easy installation
- ✓ Accurate
- ✓ Fast



Figure 6: Easy 1-2-3 assembly process with included drilling template.

### **Backscreen Connection Positioning**

The mount supports various VESA patterns. Refer to the diagram below for common backscreen connection positioning options. All TV backscreen connections are in millimeters (Width x Height).

# Backscreen connection positioning options

All TV backscreen connections are in millimeters (Width x Height).

There are a few sizes of TV plates available.

The backscreen connections in position 1 are included in some of the different TV plates, according to their size, and do not require the use of the 4 adapters (marked in blue).

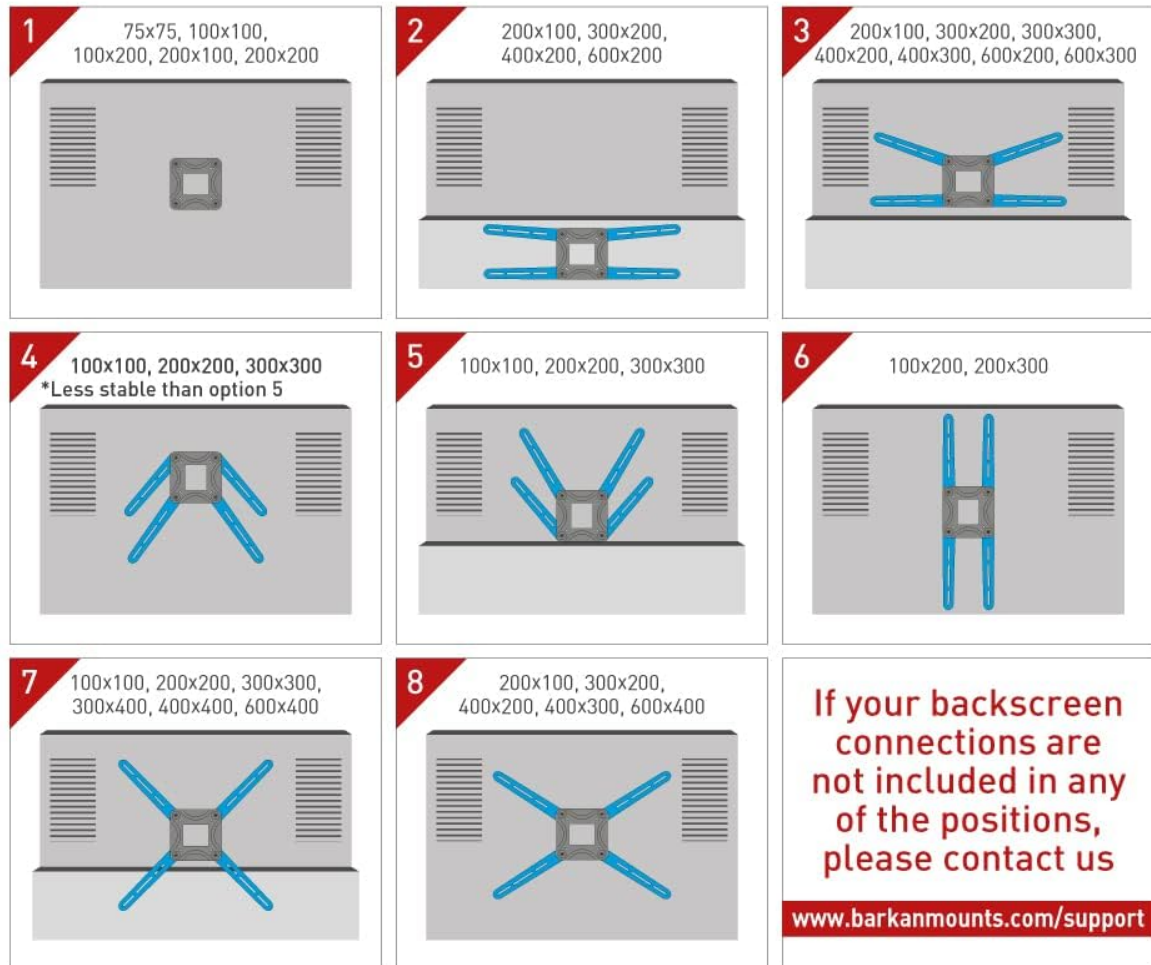


Figure 7: Backscreen connection positioning options for different VESA patterns.

## OPERATING INSTRUCTIONS

The Barkan Full Motion TV Wall Mount offers flexible adjustments for an optimal viewing experience. You can easily rotate, swivel, or tilt the TV by gently pushing or pulling it to the desired angle.

- **Tilt:** Adjust the screen vertically from  $-5^{\circ}$  to  $+15^{\circ}$  without tools.
- **Swivel:** Pivot the screen horizontally up to  $180^{\circ}$  at the screen connection plate.
- **Rotation/Fold:** The mount rotates  $180^{\circ}$  near the wall and folds  $360^{\circ}$  for extensive positioning.
- **Extension:** Extend the TV from a minimum of 3.1 inches (8 cm) to a maximum of 26 inches (66 cm) from the wall.
- **Leveling:** The mount allows for a leveling adjustment of  $\pm 5^{\circ}$ .

Full Motion

PREMIUM

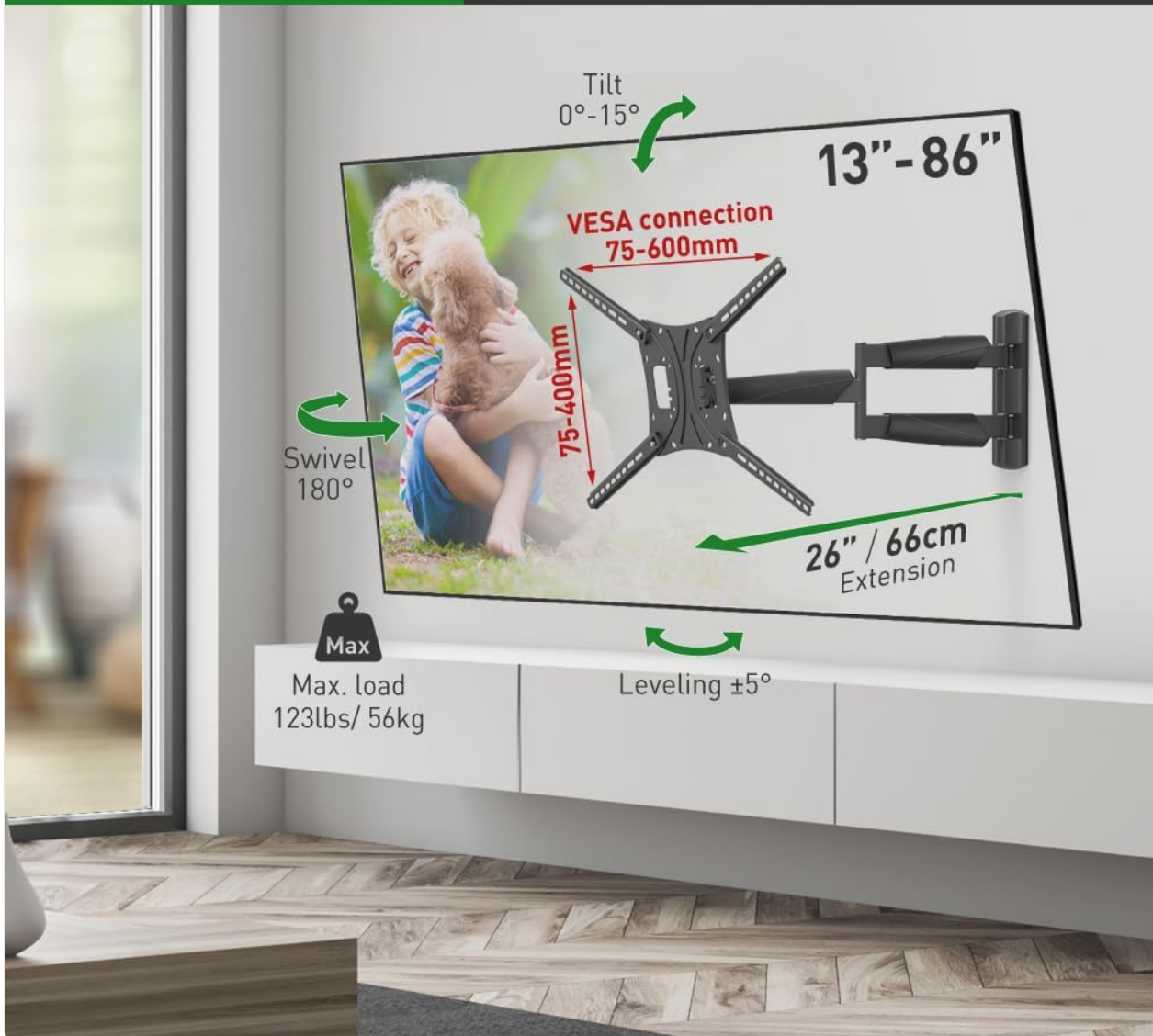


Figure 8: Full motion capabilities including tilt, swivel, extension, and leveling.

### Determining Maximum Swivel Angle

The maximum swivel angle depends on your TV's size and its distance from the wall. For optimal viewing, the line of sight should be perpendicular (90°) to the screen.

# Determine your screen's maximum swivel angle

The secret for the ultimate viewing experience: "line of sight" is perpendicular (90°) to the screen



Wide range of viewing angles for various sitting positions

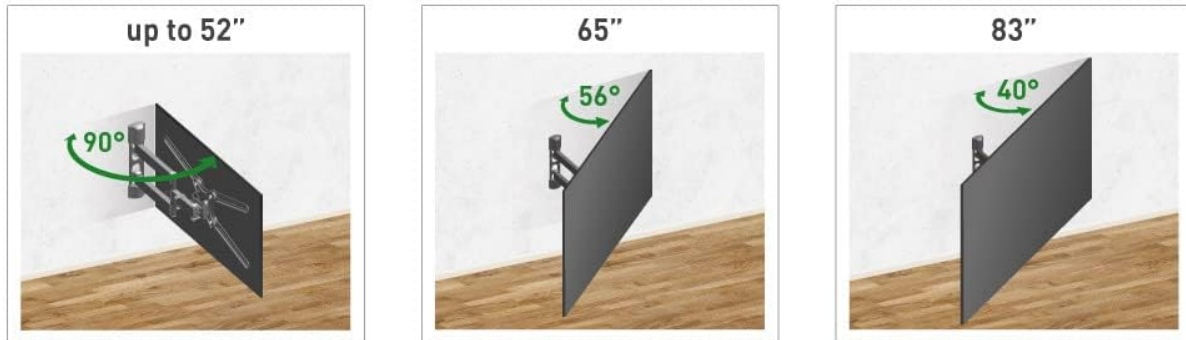


Figure 9: Maximum swivel angles for various screen sizes.

## MAINTENANCE

To ensure continued safe and optimal performance of your TV wall mount:

- Periodically check all screws and connections to ensure they are tight and secure.
- Clean the mount with a soft, dry cloth. Avoid abrasive cleaners or solvents.
- Ensure that cables are properly managed and not pinched by the moving parts of the mount.

## TROUBLESHOOTING

- **Missing or Incorrect Screws:** If your screen requires different screen-connection screws than those provided, please purchase them from your local hardware store or contact Barkan support.
- **Backscreen Connection Issues:** If your TV's backscreen connections do not match any of the positions shown in Figure 7, please contact Barkan support for assistance.
- **Mount Feels Loose:** Re-check all wall and TV connection screws to ensure they are tightened according to the installation instructions. Do not overtighten.

- **Difficulty Adjusting:** Ensure no cables are obstructing movement. If the mount is stiff, check for any debris or obstructions in the joints.

## WARRANTY AND SUPPORT

---

The Barkan Full Motion TV Wall Mount comes with a **Lifetime Limited Warranty**. This warranty covers defects in materials and workmanship under normal use. For warranty claims or technical support, please visit [www.barkanmounts.com/support](http://www.barkanmounts.com/support) or contact Barkan customer service.