

briidea YS-201B

Briidea Ultrasonic Bat Removal System (Model YS-201B) Instruction Manual

Your guide to effective and humane bat deterrence.

1. PRODUCT OVERVIEW

The Briidea Ultrasonic Bat Removal System, Model YS-201B, is designed to deter bats from your property using dual ultrasonic sound streams. These sound waves are inaudible to humans and most household pets, providing a safe and chemical-free solution for bat management. The device features multiple settings to optimize its effectiveness against bats.



Figure 1: Front view of the Briidea Ultrasonic Bat Removal System, highlighting its dual speakers, control buttons,

2. SETUP

2.1 Placement Considerations

For optimal performance, place the device in an area where bats are active or where they are entering/exiting your property. Ultrasonic waves do not penetrate solid objects like walls, furniture, or dense foliage. Ensure the speakers face the open area you wish to protect. For larger areas or areas with many obstacles, using multiple units is recommended.

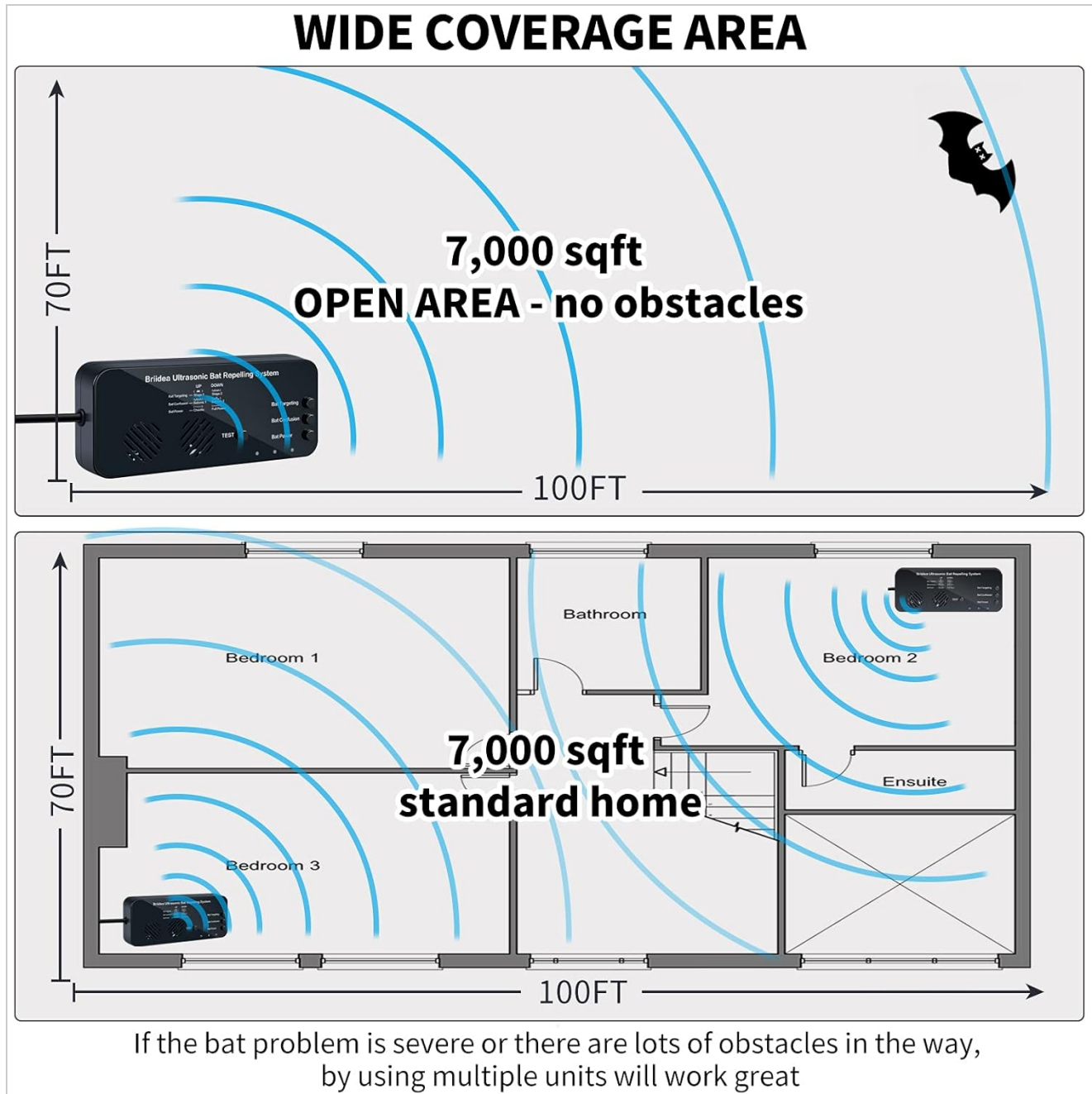


Figure 2: Illustration of the device's wide coverage area in open spaces and within a standard home, emphasizing the need for clear paths for ultrasonic waves.

2.2 Installation Methods

The Briidea Ultrasonic Bat Removal System offers flexible installation:

1. **Screw Fixation:** Use screws to securely mount the device to a wall or suitable surface.

2. **Nano-Markless Hook Sticker:** For temporary or non-damaging installation, use the provided strong nano-markless hook sticker to attach the device directly to a wall.

Ensure the device is positioned to direct the ultrasonic waves towards the target area. It can be easily hung overhead or placed on a flat surface.



Figure 3: Visual guide for the two installation methods: screw fixation and using a nano-markless hook sticker.



Figure 4: Example of the device installed in an attic, demonstrating strategic placement.

3. OPERATING INSTRUCTIONS

3.1 Powering On

Plug the device into a standard electrical outlet. Press the main switch button to activate the ultrasonic operation. The indicator light will illuminate, confirming the device is powered on and functioning.

Your browser does not support the video tag.

Video 1: Demonstrates how to power on the device and adjust its settings for ultrasonic operation.

3.2 Adjusting Settings

The device features several adjustable settings to customize its output:

- **Bat Targeting:** Adjust between Stage 1 and Stage 2 to vary the ultrasonic wave patterns.
- **Bat Confusion:** Adjust between Batonic 1 and Batonic 2 to introduce different confusing frequencies.

- **Bat Power:** Select between 'Chaotic' and 'Full Power' modes to control the intensity and variability of the ultrasonic output.
- **Night Light:** An optional night light feature can be toggled on or off for convenience.
- **Test Button:** Press this button to hear the ultrasonic sound at a human-audible level, confirming the device is emitting sound.

Experiment with different combinations of these settings to find the most effective deterrent for your specific situation. Bats may not adapt to variable sounds, making these adjustments crucial for long-term effectiveness.

Your browser does not support the video tag.

Video 2: Shows the device's settings and how to adjust them for optimal bat repelling.

4. How It Works

The Briidea Ultrasonic Bat Removal System utilizes dual speakers to emit powerful ultrasonic sound streams. These high-frequency sounds are specifically designed to irritate bats' auditory and nervous systems, creating an unbearable environment that disrupts their navigation and encourages them to leave the area. The varying frequencies prevent bats from developing immunity to the pulses.

ULTRASONIC BAT REPELLING

The ultrasonic sounds irritate bats' auditory and nervous system, make them unbearable and unable to navigate, ultimately drive them away.

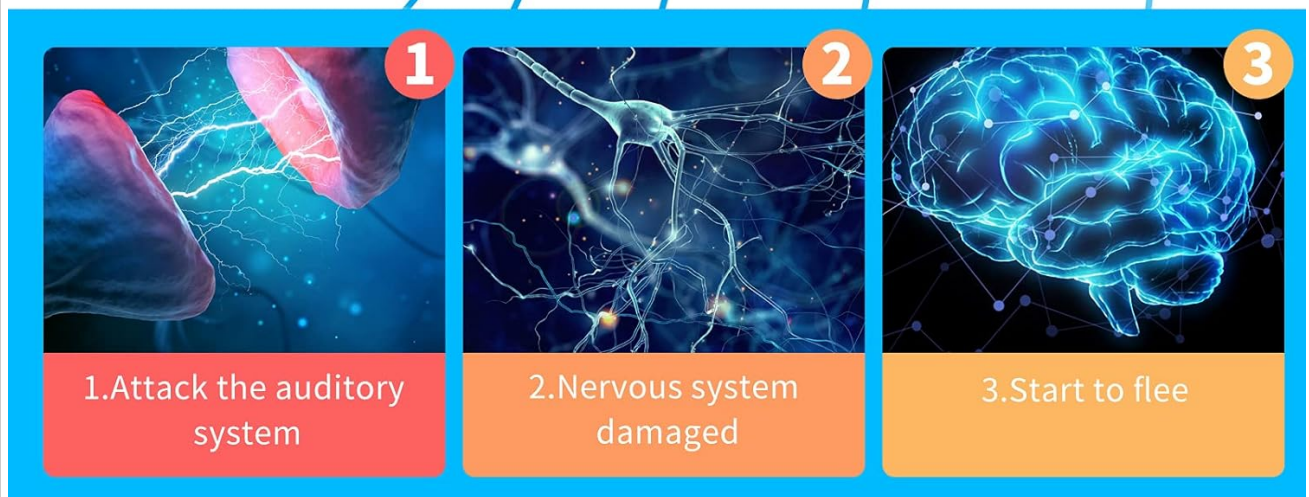
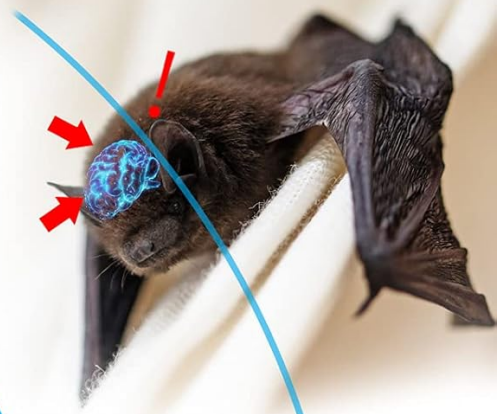


Figure 5: Explains the mechanism of ultrasonic bat repelling, showing how sound waves impact bats.

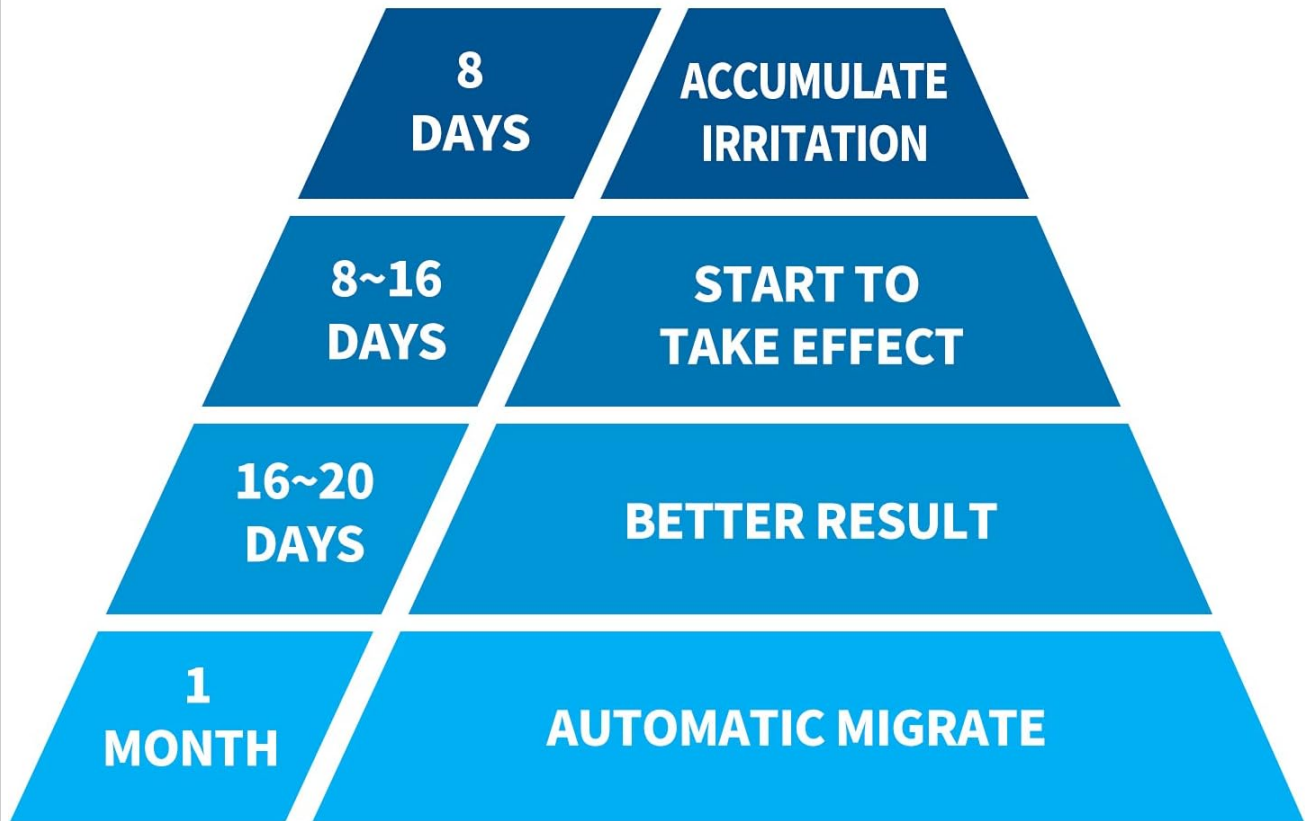
4.1 Expected Results Timeline

Continuous use of the ultrasonic bat remover is crucial for achieving desired results. The timeline for effectiveness can vary:

- **Initial Irritation:** Within 8 days, bats may begin to experience irritation.
- **Effect Begins:** Noticeable effects typically start between 8 to 16 days of continuous use.
- **Better Results:** Significant improvement is often observed between 16 to 20 days.
- **Automatic Migration:** Bats may fully migrate from the area after approximately 1 month of consistent operation.

Patience and perseverance are key, as individual bat responses and environmental factors can influence the timeline.

BAT REPELLING EFFECT



Tips: Bats are creatures with individual differences, the effect varies from place to place, it's recommended for persistent use.

Figure 6: Timeline illustrating the progressive effect of the bat repelling system.

4.2 Safety and Environmental Impact

The Briidea Ultrasonic Bat Removal System is designed to be human and pet safe. It operates without chemicals, odors, or radiation. The ultrasonic sound waves are outside the hearing range of humans and common household pets, ensuring no harm or disturbance to them.

HUMAN AND PET FRIENDLY



No Odor



No Radiation



No Chemical



No Noise



Figure 7: Highlights the human and pet-friendly aspects of the device.

5. MAINTENANCE

The Briidea Ultrasonic Bat Removal System requires minimal maintenance. To ensure continued optimal performance:

- **Cleaning:** Periodically wipe the device with a dry, soft cloth to remove dust or debris. Do not use harsh chemicals or abrasive cleaners.
- **Obstruction Check:** Regularly check that the front of the device, where the speakers are located, is free from any obstructions that could block the ultrasonic waves.
- **Power Supply:** Ensure the device remains securely plugged into a functional power outlet.

6. TROUBLESHOOTING

If you are not observing the desired results, consider the following troubleshooting steps:

- **Patience:** Remember that it can take 16-20 days for noticeable results and up to a month for bats to fully migrate. Continue consistent use.

- **Check Placement:** Verify that the device is positioned correctly, with speakers facing the target area and no major obstructions blocking the ultrasonic waves.
- **Adjust Settings:** Experiment with different 'Bat Targeting', 'Bat Confusion', and 'Bat Power' settings. Varying the frequencies can prevent bats from adapting.
- **Power Check:** Ensure the device is properly plugged in and the indicator light is on. Test the outlet with another appliance if necessary.
- **Multiple Units:** For severe infestations or large, complex areas with many walls or obstacles, consider installing additional units to ensure adequate coverage.

7. SPECIFICATIONS

Feature	Detail
Brand	briidea
Model Number	YS-201B
Product Dimensions	2 x 1 x 1 inches
Item Weight	13.4 ounces (0.38 Kilograms)
Power Consumption	2-5 Watts
Repelling Coverage	Up to 7,000 sq. ft (in open areas)
Target Species	Bat
Is Electric	Yes
UPC	779288404885

8. WARRANTY AND SUPPORT

For specific warranty details, return policies, or technical support regarding your Briidea Ultrasonic Bat Removal System, please refer to the product packaging or contact the manufacturer directly. Contact information is typically provided on the product box or within supplementary documentation.