

## Revolvo RE001

# Revolvo RE001 Electronic Keypad Deadbolt User Manual

Model: RE001

### PRODUCT OVERVIEW

The Revolvo RE001 Electronic Keypad Deadbolt offers a secure and convenient keyless entry solution for your home. This smart lock combines a keypad deadbolt with a handle set, providing multiple access options and enhanced security features.



Figure 1: Revolo RE001 Electronic Keypad Deadbolt and Handle Set. This image shows the complete lock system, including the keypad deadbolt and the integrated handle, installed on a wooden door, highlighting its sleek matte black finish.

### Key Features:

- **Keyless Entry:** Provides up to 20 customizable access codes for family members and temporary codes for guests.
- **Auto-Locking:** Configurable automatic locking from 10 to 99 seconds, or instant one-touch locking.
- **Anti-Peeking Password:** Allows entry of random digits before or after the actual code to prevent code exposure.
- **Durable Design:** Constructed from sturdy zinc alloy with an IP54 weather-resistant rating, designed for long-term use in various conditions.
- **Integrated Handle Set:** Eliminates the need for a separate door handle.



# Keyless Entry Front Door Lock Set



Auto  
Lock



20  
Users



One Touch  
Locking



IP54  
Waterproof



One-Time  
PIN Code



Figure 2: Overview of Key Features. This graphic illustrates the main functionalities of the Revolo RE001 lock, such as auto-lock, support for 20 users, one-touch locking, IP54 waterproofing, one-time PIN code capability, and an impressive 1-year battery life with low battery alerts.

## INSTALLATION GUIDE

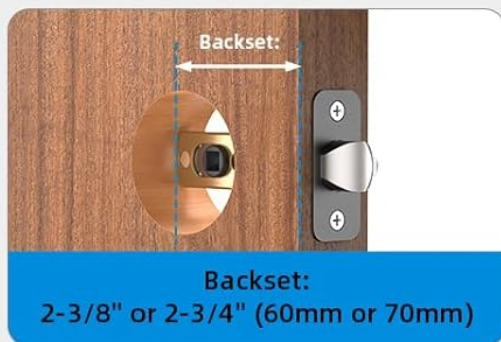
This section provides detailed instructions for installing your Revolo RE001 Electronic Keypad Deadbolt. Ensure you have a Phillips head screwdriver and refer to the diagrams for proper alignment.

### Door Compatibility and Dimensions:

The lock set is designed for doors with specific dimensions:

- **Door Hole Diameter:** 2-1/8 inches (54 mm). 38 mm door holes are not compatible.
- **Door Thickness:** 1-3/8 inches to 2 inches (35 mm to 50 mm).
- **Backset:** Adjustable for 2-3/8 inches (60 mm) or 2-3/4 inches (70 mm).





✓ **Left  
Handed  
Door**

✓ **Right  
Handed  
Door**

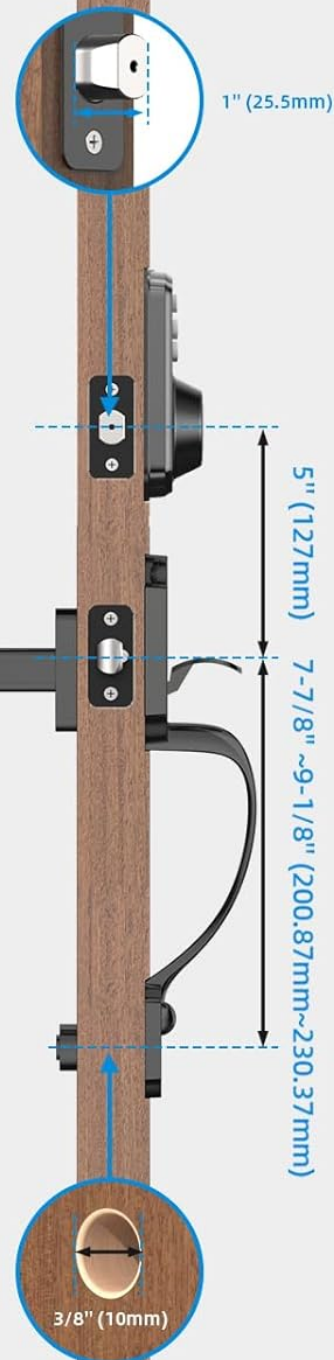
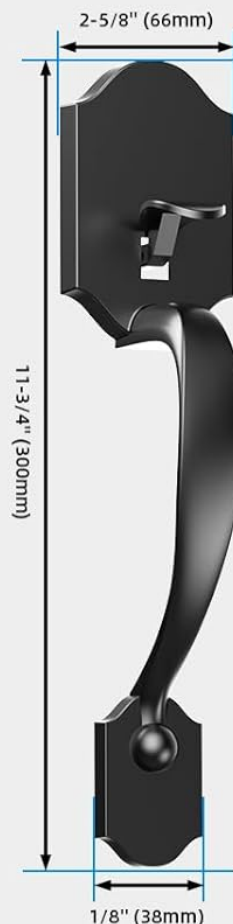


Figure 3: Door Compatibility and Dimensions. This diagram provides critical measurements for your door, including the required diameter of the door hole, the acceptable range for door thickness, and the adjustable backset for both left and right-handed door installations.

### Step-by-Step Installation:

1. **Prepare the Door:** Ensure your door meets the specified dimensions. If necessary, use the provided template to mark and drill holes.

2. **Install the Latch:** Insert the latch into the door edge. Ensure the latch bolt is facing the correct direction for your door swing.
3. **Install the Exterior Assembly:** Place the exterior keypad assembly onto the door, aligning the spindle with the latch.
4. **Install the Interior Mounting Plate:** Secure the interior mounting plate to the exterior assembly using screws.
5. **Install the Interior Assembly:** Connect the cable from the exterior assembly to the interior assembly. Attach the interior assembly to the mounting plate.
6. **Install the Handle Set:** Attach the handle set to the lower portion of the door, ensuring proper alignment with the deadbolt.
7. **Insert Batteries:** Open the battery cover on the interior assembly and insert 4 AA batteries (not included).
8. **Perform Door Handing Detection:** This crucial step calibrates the lock for your door's orientation.
  - With the door open, turn the thumb turn on the interior assembly to the unlocked position (vertical).
  - While holding the thumb turn in the unlocked position, press and hold the reset button (usually a small pinhole button) for 3 seconds.
  - The lock will perform an automatic handing detection cycle, extending and retracting the deadbolt. Wait for the cycle to complete.
  - If the deadbolt does not cycle correctly, ensure the latch mechanism is not jammed or extended. Disassemble if necessary to check for obstructions.

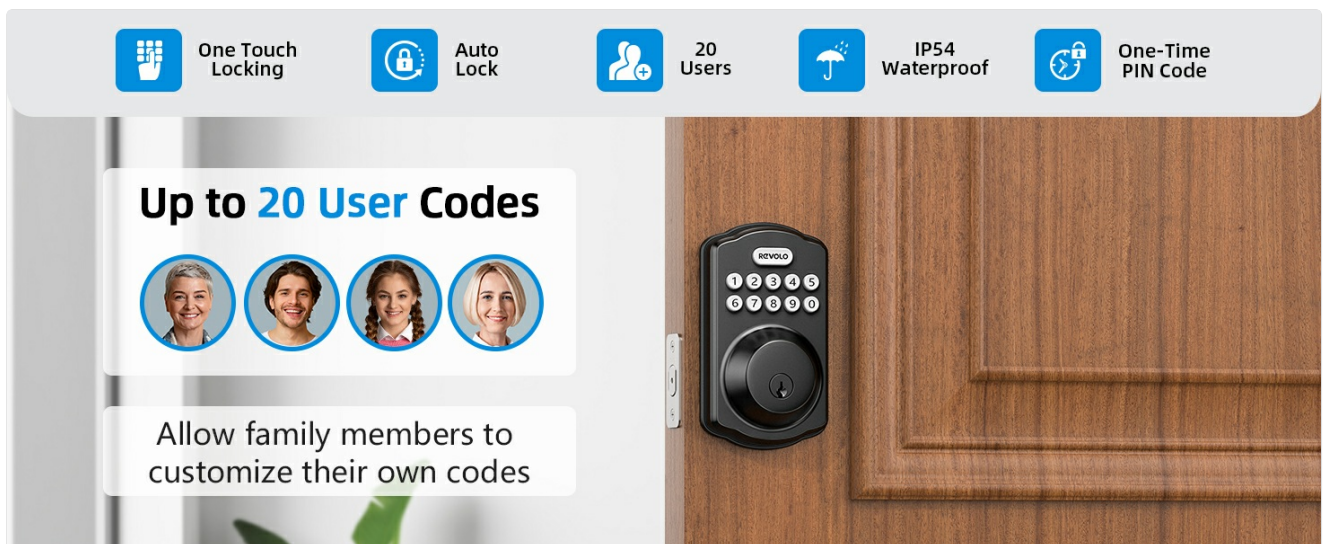


Figure 4: Lock Components and Fit. This image illustrates how the various parts of the Revolo RE001 lock, including the keypad, interior unit, and handle, fit together and are compatible with standard door configurations.

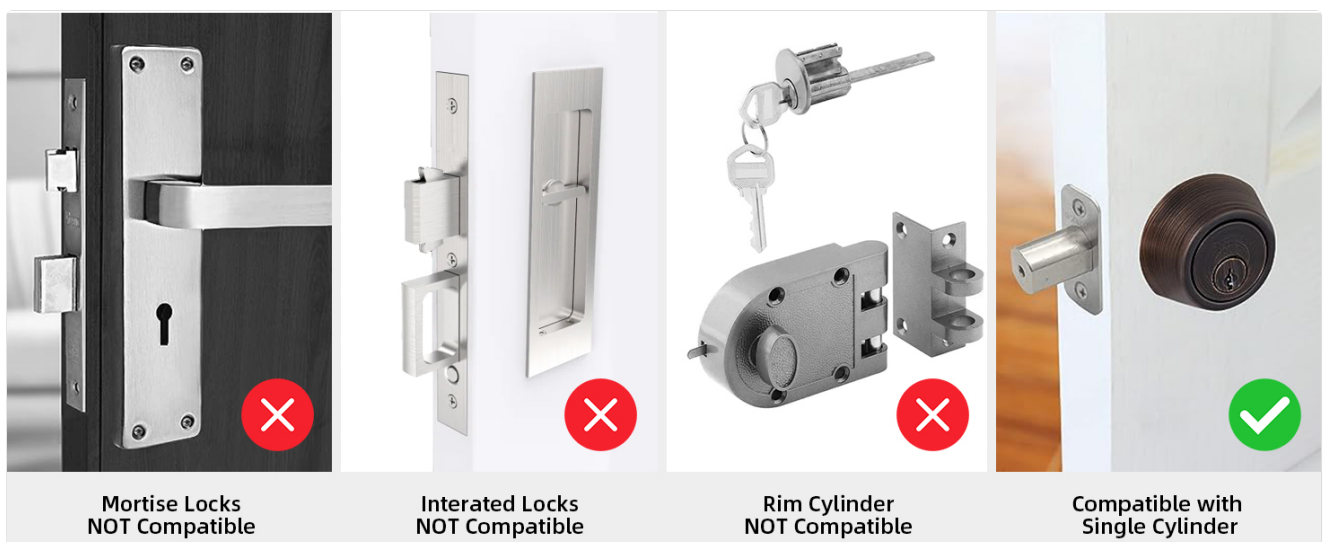


Figure 5: Handleset and Latch Installation. This diagram provides visual guidance for installing the handleset and demonstrates the

correct and incorrect ways to position the adjustable latch, ensuring proper functionality of the lock.

## OPERATING INSTRUCTIONS

### Programming User Codes:

The Revolo RE001 supports up to 20 unique user codes, allowing different family members or authorized individuals to have their own access. You can also generate one-time codes for temporary access.



## Up to 20 PIN Codes



**Family  
Members**



**Relatives**



**Guests  
Visitors**



**Apartment  
Roommate**



**Friends  
Neighbors**



**Courier  
Repairman**

**Allow different family  
members to customize  
their own unlock method**



Figure 6: User Code Management. This image highlights the capability of the Revolo RE001 to store up to 20 unique PIN codes, making it convenient for various users such as family members, guests, and service providers.



# One-Time PIN Code



The entry code is **159267**.

Okay, I am in Thanks.



Figure 7: One-Time PIN Code Feature. This image illustrates the convenience of generating and sharing a one-time PIN code, ideal for granting temporary access to visitors or service personnel without compromising your permanent codes.

## Locking and Unlocking:

- **Keypad Entry:** Enter your programmed user code on the keypad, followed by the lock button (or similar confirmation).
- **One-Touch Locking:** To quickly lock the door from the outside, press and hold any key on the keypad for 2

seconds.

- **Auto-Lock:** The lock can be set to automatically lock after a period of 10-99 seconds. This feature ensures your door is always secured.
- **Manual Locking/Unlocking:** Use the thumb turn on the interior assembly or the physical key from the exterior.

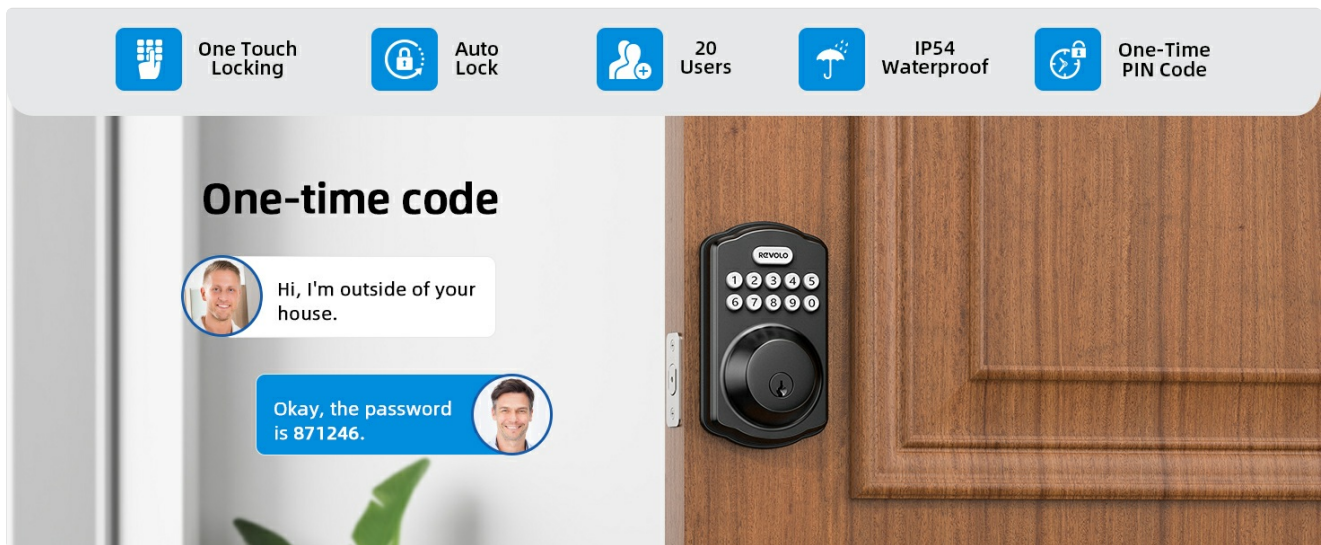


Figure 8: One-Touch and Auto-Lock Functions. This image visually explains how to use the one-touch locking feature by pressing and holding a key, and also highlights the automatic locking capability that can be set for a duration of 10-99 seconds.

### Advanced Security Features:

- **Anti-Peeking Password:** When entering your code, you can input random digits before or after your actual PIN. For example, if your code is 12345, you can enter 98712345654. As long as the correct sequence is embedded, the lock will open.
- **Wrong Code Entry Limit:** After 10 consecutive invalid code entries, the lock will shut down for 3 minutes to prevent brute-force attacks.
- **Mute Mode:** For quiet operation, the lock's sounds can be muted. Refer to the full user manual for specific steps to enable/disable mute mode.





Figure 9: Anti-Peeking Password. This image demonstrates the anti-peeking feature, which enhances security by allowing users to input random numbers before and after their actual PIN, making it difficult for onlookers to discern the correct code.





Figure 10: Wrong Code Entry Limit. This image highlights a security measure where the lock temporarily deactivates for 3 minutes after 10 incorrect code entries, preventing unauthorized access attempts.



Figure 11: Mute Mode. This image illustrates the Mute Mode feature, which allows for silent operation of the lock, ideal for maintaining a quiet environment, especially when children are sleeping.

## MAINTENANCE

### Battery Replacement:

The Revolo RE001 operates on 4 AA batteries (not included). The lock is designed for up to 1 year of battery life under normal usage. A low battery alert will notify you when it's time to replace the batteries.

- When the battery is low, the keypad will flash a specific indicator (e.g., red light or specific number sequence) after a successful entry.
- To replace batteries, remove the interior assembly cover, remove old batteries, and insert new ones, ensuring correct polarity.



Figure 12: Low Battery Alert. This image displays the keypad with a visual indicator for low battery, prompting the user to replace the batteries to ensure continuous operation.



## Weather Resistance:

The Revolo RE001 is built to withstand various weather conditions with an IP54 rating, offering protection against dust and splashing water. It is also designed for high and low-temperature resistance.

- **Temperature Resistance:** Operates effectively in temperatures ranging from -22°F (-30°C) to 158°F (70°C).
- Regularly wipe down the exterior with a soft, damp cloth to keep it clean. Avoid abrasive cleaners.

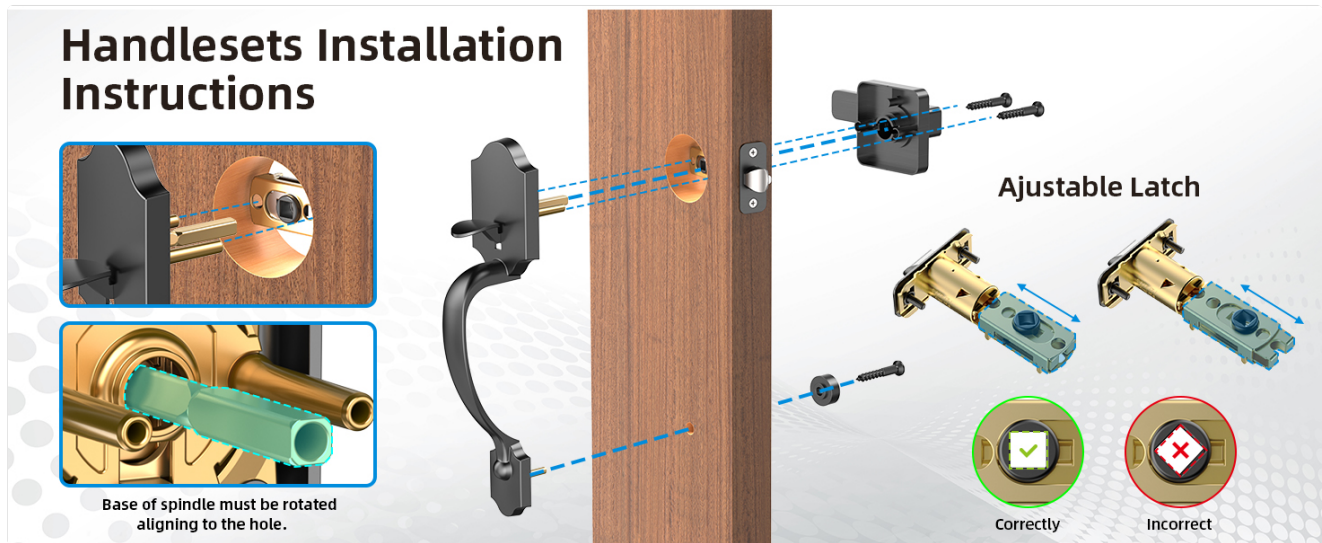


Figure 13: All-Weather Performance. This image emphasizes the lock's durability and resistance to extreme temperatures and water, ensuring reliable performance in diverse environmental conditions.

## TROUBLESHOOTING

If you encounter issues with your Revolo RE001 Electronic Keypad Deadbolt, refer to the following common problems and solutions:

### Deadbolt Not Cycling or Operating Correctly:

- **Issue:** The deadbolt does not extend or retract fully, or makes noise but doesn't move.
- **Solution:** This often indicates an issue with the door handing detection or a mechanical obstruction.
  - **Re-run Door Handing Detection:** With the door open, ensure the thumb turn is in the unlocked position. Press and hold the reset button (small pinhole) for 3 seconds. The lock should cycle to detect the door's direction.
  - **Check Latch Mechanism:** If the deadbolt mechanism was set to an extended position during installation while the bolt was locked, it can jam. Disassemble the lock to ensure the bolt mechanism is free and not obstructed. Reassemble and re-run handing detection.
  - **Battery Check:** Ensure batteries are fresh and correctly installed. Low batteries can cause erratic behavior.

### Keypad Unresponsive or Lock Not Functioning in Cold Weather:

- **Issue:** The keypad does not respond, or the lock stops working when temperatures drop.
- **Solution:** While the lock is rated for low temperatures, extreme cold or prolonged exposure can affect battery performance.
  - **Replace Batteries:** Cold weather can significantly reduce battery life. Replace with fresh, high-quality

alkaline batteries.

- **Allow to Warm Up:** If the lock has been exposed to extreme cold, allow it to warm up to room temperature before attempting operation.
- **Use Physical Key:** In cases of electronic malfunction due to extreme conditions, use the physical backup key for access.

Physical Key Difficult to Insert or Turn:

- **Issue:** The physical key is hard to insert or turn in the lock cylinder.
- **Solution:**
  - **Lubricate:** Apply a small amount of graphite lubricant (not oil-based lubricants) into the keyway.
  - **Check for Debris:** Ensure there is no foreign material obstructing the keyway.
  - **Verify Key:** Confirm you are using the correct, original key provided with the lock.

SPECIFICATIONS

Feature	Detail
Brand	Revolo
Model Name	Keypad door lock with handle (RE001)
Lock Type	Keypad Deadbolt
Material	Zinc Alloy, Stainless Steel
Color	Matte Black (as per current product)
Item Dimensions (L x W x H)	18 x 7 x 4 inches
Item Weight	4 Pounds
Door Hole Diameter	2-1/8 inches (54 mm)
Door Thickness	1-3/8 inches to 2 inches (35 mm to 50 mm)
Backset	Adjustable 2-3/8 inches (60 mm) or 2-3/4 inches (70 mm)
Power Source	4 AA Batteries (not included)
Battery Life	Up to 1 year (typical)
Weather Resistance	IP54 Rated
Temperature Range	-22°F (-30°C) to 158°F (70°C)
Access Codes	Up to 20 user codes, plus one-time codes
Auto-Lock Duration	10-99 seconds (adjustable)



## WARRANTY AND SUPPORT

For warranty information, please refer to the documentation included with your product or visit the official Revolo website. Keep your proof of purchase for warranty claims.

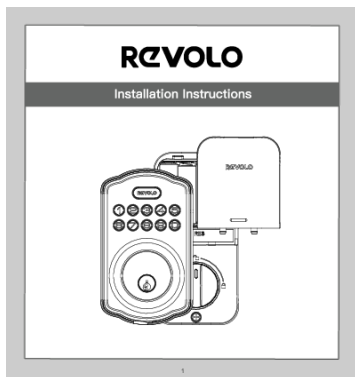
If you require further assistance or have questions not covered in this manual, please contact Revolo customer support. Contact details can typically be found on the product packaging or the manufacturer's website.

### Online Resources:

- Official Revolo Store: [Revolo Store on Amazon](#)
- Additional Documents (PDF):
  - [Installation Manual \(PDF\)](#)
  - [Troubleshooting Guide \(PDF\)](#)
  - [User Manual \(PDF\)](#)

© 2024 Revolo. All rights reserved.

Documents - Revolo – RE001

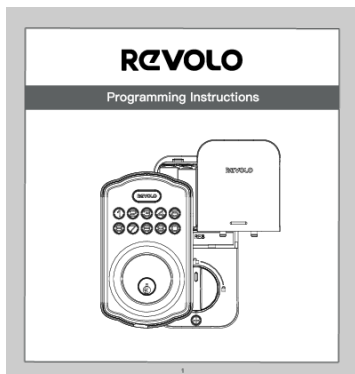


### [\[pdf\] User Manual](#)

RE001 Installation Manual Revolo Electronic Keypad Deadbolt Keyless Entry Door Lock Keyed Auto with Handle Front Sets Anti Peeking Password Amazon B1INP3jQXLL m media amazon images I |||

...

lang: **score:18** filesize: 3.88 M page\_count: 22 document date: 2022-04-25



### [Revolo Electronic Keypad Deadbolt Programming Instructions](#)

Comprehensive programming instructions for the Revolo Electronic Keypad Deadbolt, covering master code setup, user code management, auto-lock features, vacation mode, and troubleshooting.

lang: **score:18** filesize: 5.46 M page\_count: 7 document date: 2022-04-22