

ThreeH H-AC55Blue

ThreeH Digital Alarm Clock with Radio

Model: H-AC55Blue

Brand: ThreeH

INTRODUCTION

Thank you for purchasing the ThreeH Digital Alarm Clock with Radio. This manual provides detailed instructions for setting up, operating, and maintaining your new alarm clock. Please read it thoroughly to ensure optimal performance and longevity of the product.



Image: Front view of the ThreeH Digital Alarm Clock, displaying a large, clear blue LED time. The clock features a sleek, modern design with a reflective screen.

PRODUCT FEATURES

- **Large LED Display:** 7.6-inch LED screen for easy readability.
- **FM Radio:** Built-in FM radio with 15-level adjustable volume and memory for up to 15 stations (76-108 MHz).
- **Dual Alarm Settings:** Set two independent alarms for different wake-up times.
- **Snooze Function:** Adjustable snooze duration (default 9 minutes).
- **USB Charging Port:** Convenient USB port for charging mobile phones or other devices.
- **Built-in Battery Backup:** Ensures time memory function during power outages (requires 1 CR2 battery, not included).
- **Adjustable Brightness:** 4 levels of brightness adjustment (manual or automatic).

SETUP

1. Power Connection

Connect the DC jack to the power input port on the back of the unit. Plug the other end into a standard wall outlet.

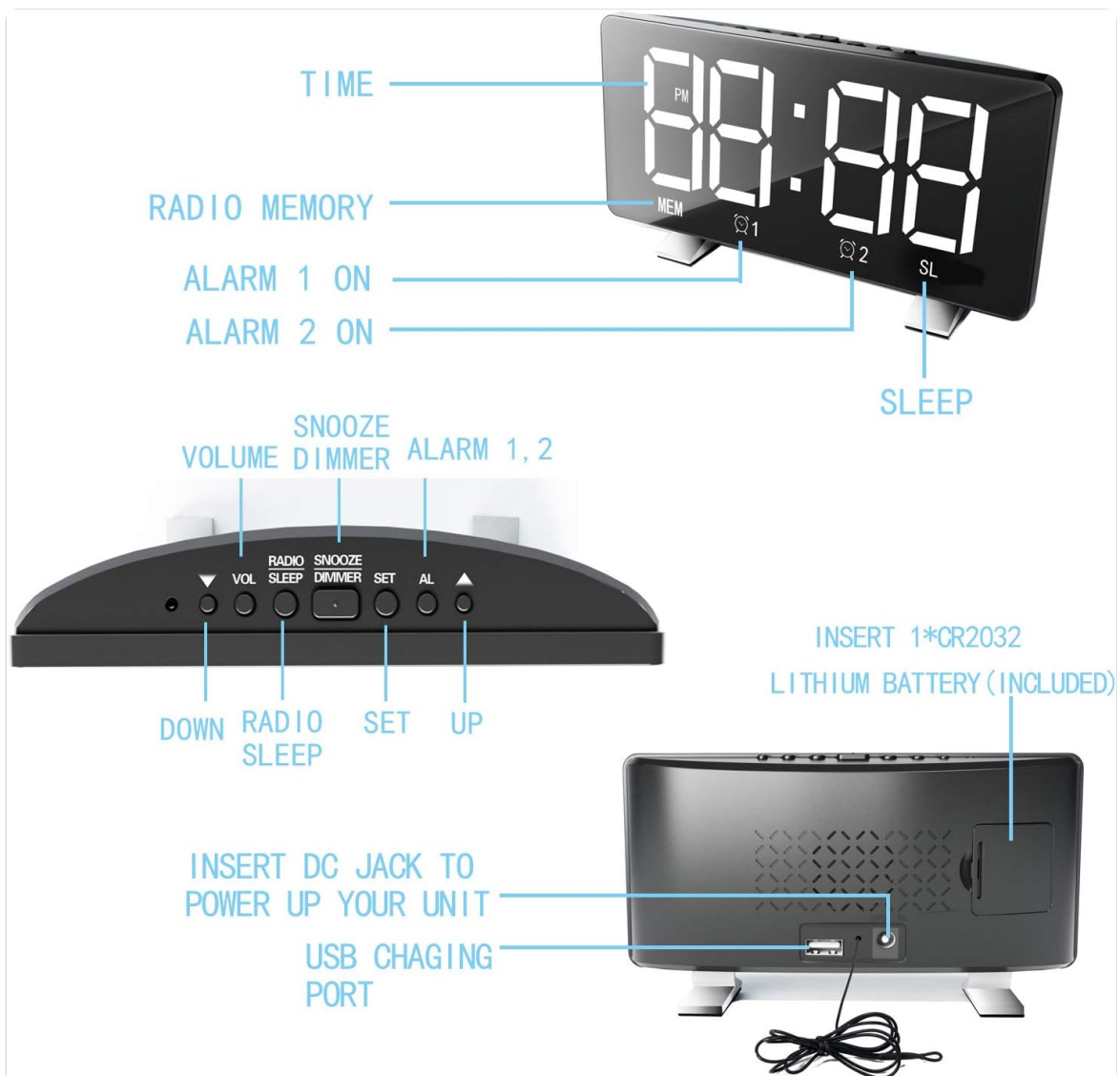


Image: Diagram illustrating the back panel of the alarm clock, highlighting the DC power input and the USB charging port. It also shows the location for the CR2032 lithium battery.

2. Battery Backup Installation

For time memory function during power outages, insert 1 CR2 battery (not included) into the battery compartment on the back of the clock. Ensure correct polarity.

3. Initial Time Setting

Upon first power-up, the clock may display a default time. Proceed to the "Operating Instructions" section to set the correct time.

OPERATING INSTRUCTIONS

Setting the Time

1. Press and hold the **SET** button until the hour digits flash.
2. Use the **UP** or **DOWN** buttons to adjust the hour.
3. Press **SET** again to move to the minute digits.
4. Use the **UP** or **DOWN** buttons to adjust the minutes.

5. Press **SET** to confirm and exit time setting mode.
6. To switch between 12-hour and 24-hour format, press the **SET** button once while in normal time display mode.

Setting Alarms (Alarm 1 and Alarm 2)

The clock supports two independent alarms.

1. Press the **AL** button once to set Alarm 1, or twice to set Alarm 2. The corresponding alarm icon **Q1** or **Q2** will flash.
2. The hour digits will flash. Use **UP** or **DOWN** to adjust the hour.
3. Press **AL** again to move to the minute digits. Use **UP** or **DOWN** to adjust the minutes.
4. Press **AL** again to select the alarm sound source: Radio or Digital Alarm.
5. Press **AL** one more time to confirm and activate the alarm. The alarm icon will remain lit.
6. To deactivate an alarm, press the **AL** button repeatedly until the corresponding alarm icon disappears.

2 Alarm CLOCK

Meet your needs at different times



Image: Illustration demonstrating the dual alarm functionality, showing two different wake-up times (7:00 and 10:00) and the snooze/dimmer button.

Using the Snooze Function

When an alarm sounds, press the **SNOOZE/DIMMER** button to temporarily silence the alarm for 9 minutes (default). The alarm will sound again after the snooze period. To cancel the alarm completely,

press any other button.

FM Radio Operation

1. Press the **RADIO** button to turn on the FM radio.
2. Press and hold the **RADIO** button to automatically scan and save available stations (up to 15).
3. Use the **UP** or **DOWN** buttons to manually tune or cycle through saved stations.
4. Adjust the volume using the **VOL** button.
5. To turn off the radio, press the **RADIO** button again.

FM RADIO ALARM CLOCK

Optimum signal reception & 15 preset station memory

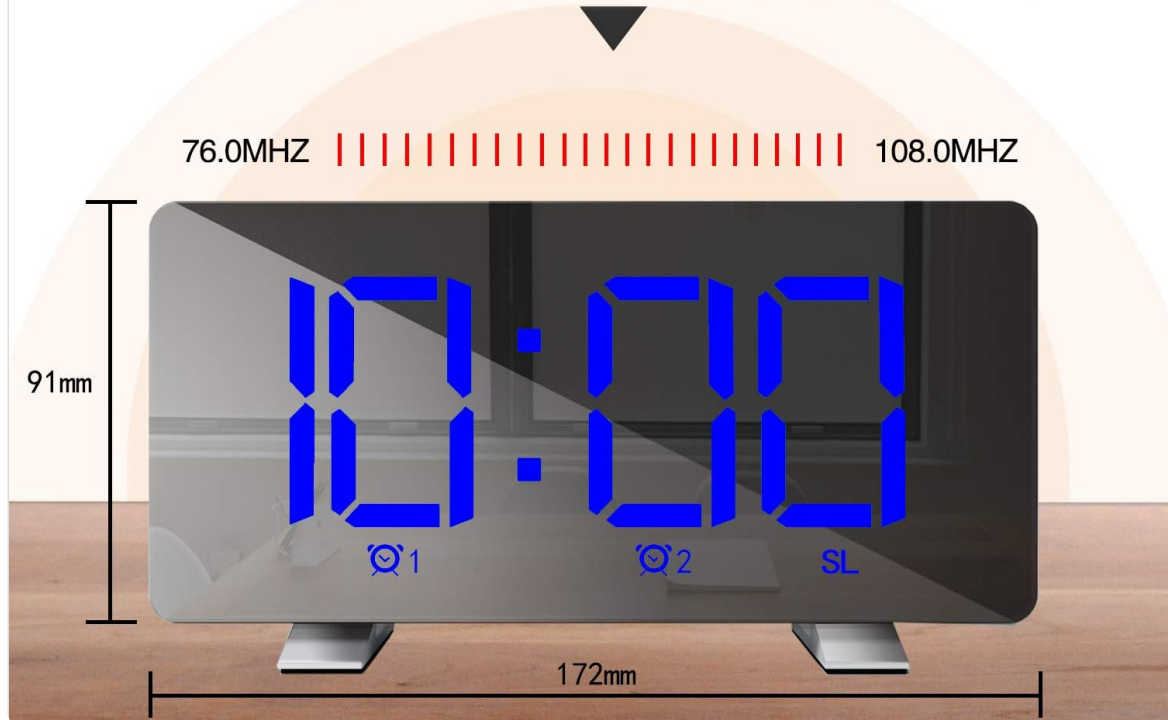
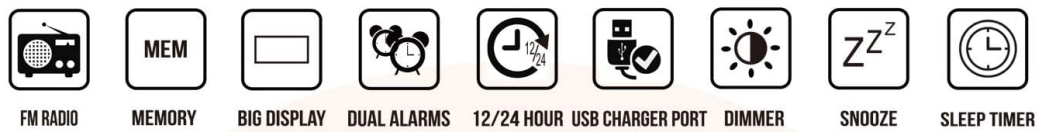


Image: Diagram highlighting the FM radio features, including frequency range (76.0MHz-108.0MHz) and memory for 15 preset stations. Also shows the clock's dimensions.

FM RADIO

Receive best signal for 76.0 MHz–108 MHz

Free storage of 15 channels

Time can still be displayed in radio hibernation mode



Image: The alarm clock displaying an FM radio frequency (76.0 MHz) and showing the time in sleep mode, indicating that time is still visible during radio operation.

Adjusting Display Brightness

Press the **SNOOZE/DIMMER** button repeatedly to cycle through 4 levels of brightness: Bright, Medium, Dim, and Off. The clock can also automatically adjust brightness based on ambient light.



3 Adjustable Brightness

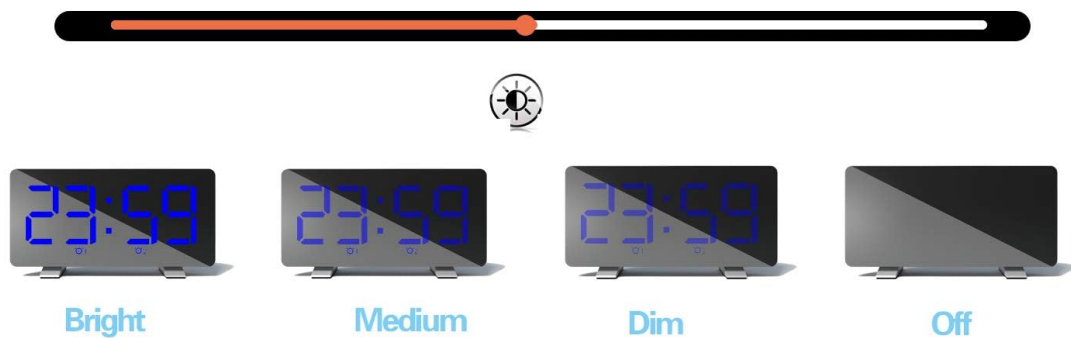


Image: Visual representation of the alarm clock display at three adjustable brightness levels: Bright, Medium, and Dim, along with an "Off" state for the display.

USB Charging Port

Connect your mobile phone or other USB-powered device to the USB charging port on the back of the clock. This port provides power for charging your devices.



CHARGING

Fashion, minimalist screen!

Light up your home decor

Time alarm function

but also convenient charging

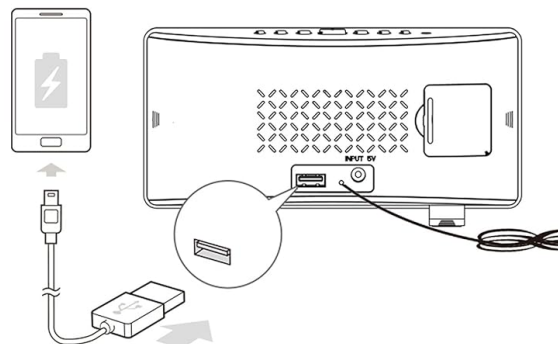


Image: The ThreeH Digital Alarm Clock connected to a laptop, with a smartphone charging via the clock's USB port, demonstrating its charging capability.

MAINTENANCE

- Clean the clock with a soft, dry cloth. Do not use abrasive cleaners or solvents.
- Avoid exposing the clock to extreme temperatures, direct sunlight, or high humidity.
- Do not immerse the clock in water or any other liquid.
- If the clock will not be used for an extended period, remove the battery backup to prevent leakage.

TROUBLESHOOTING

Problem	Possible Cause	Solution
---------	----------------	----------

Problem	Possible Cause	Solution
Display is blank.	No power connection.	Ensure the power adapter is securely plugged into the clock and a working wall outlet.
Alarm does not sound.	Alarm not activated or set incorrectly.	Verify alarm settings and ensure the alarm icon is lit on the display. Check alarm volume.
Radio reception is poor.	Weak signal or interference.	Adjust the position of the clock or the antenna wire for better reception. Avoid placing near other electronic devices.
USB charging not working.	Device not compatible or cable issue.	Ensure your device is compatible with USB charging. Try a different USB cable.





SPECIFICATIONS

Brand	ThreeH
Model Number	H-AC55Blue
Display Type	Digital LED
Dimensions (Approx.)	172mm (W) x 91mm (H)
Power Source	AC Power Adapter (USB powered, adapter not included)
Battery Backup	1 CR2 battery (not included)
FM Radio Frequency	76.0MHz - 108.0MHz
Material	Plastic, Acrylonitrile Butadiene Styrene
Item Weight	295 Grams (10.4 ounces)

WARRANTY AND SUPPORT

For warranty information and customer support, please refer to the documentation included with your purchase or contact ThreeH customer service directly. Contact details can typically be found on the manufacturer's official website or on the product packaging. Please retain your proof of purchase for any warranty claims.

Related Documents

	<p>ThreeH FM Radio Alarm Clock User Manual</p> <p>Comprehensive user manual for the ThreeH FM Radio Alarm Clock, detailing features, setup, settings, alarm functions, radio operation, sleep timer, brightness control, charging, factory reset, and precautions.</p>
	<p>ThreeH Digital Projection Alarm Clock HAC54 User Manual</p> <p>User manual for the ThreeH Digital Projection Alarm Clock HAC54, detailing features, setup, time and alarm settings, FM radio operation, sleep timer, projection use, brightness control, charging, factory reset, and precautions.</p>
	<p>EN8827A-RGB Digital Projection Alarm Clock User Manual</p> <p>Comprehensive user manual for the EN8827A-RGB Digital Projection Alarm Clock, detailing setup, features, alarm settings, projection, brightness control, and maintenance.</p>
	<p>H-AC11 User Manual - ThreeH Digital Desk Clock</p> <p>User manual for the ThreeH H-AC11 digital desk clock, covering display modes, time/date/alarm settings, brightness, power supply, and reset functions.</p>