

symcode MJ-X8DA

Symcode MJ-X8DA 2D QR Wireless Bluetooth Barcode Scanner User Manual

Model: MJ-X8DA

1. INTRODUCTION

The Symcode MJ-X8DA is a versatile 2D Wireless Bluetooth Barcode Scanner designed for efficient data capture. Featuring a durable aluminum alloy metal casing, this scanner offers three connectivity options: Bluetooth, 2.4G Wireless via USB adapter, and wired USB 2.0. It is compatible with various operating systems and software, making it suitable for diverse business applications. This manual provides essential information for setting up, operating, and maintaining your scanner.

2. PACKAGE CONTENTS

Upon opening your Symcode MJ-X8DA package, please verify that all the following items are included:

- Symcode MJ-X8DA Barcode Scanner
- Charging Cord (USB Cable)
- Wireless Dongle (USB Adapter)
- Hand Strap
- User Manual (this document)

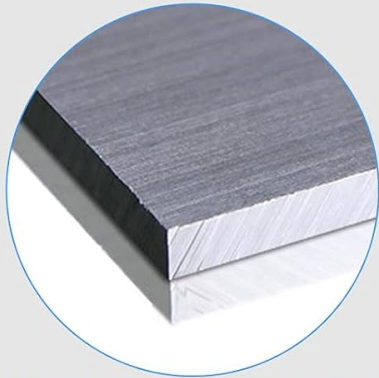


Image 2.1: The package contents include the barcode scanner, USB cable, wireless dongle, hand strap, and user manual.

3. PRODUCT FEATURES

- **Durable Construction:** Features an aluminum alloy metal casing for enhanced durability and drop resistance.
- **3-in-1 Connectivity:** Supports Bluetooth, 2.4G Wireless (via USB adapter), and wired USB 2.0 connections.
- **Wide Compatibility:** Works with Windows XP/7/8/10, Mac OS, Windows Mobile, Android OS, and iOS devices. Compatible with software like Quickbook, Word, Excel, and Novell.
- **Advanced CMOS Sensor:** Equipped with a CMOS sensor for efficient capture of 1D and 2D barcodes from labels, paper, and digital displays (mobile phones, computers).
- **Large Storage Capacity:** Internal memory can store up to 10,000 codes in storage mode before uploading.
- **Super Decoding Ability:** Capable of decoding blurring or incomplete 1D and 2D barcodes rapidly.
- **Customizable Settings:** Offers over 180 configuration options, including adding prefixes/suffixes, deleting characters, and integrating keyboard keys/combinations.
- **Scanning Indications:** Provides feedback through beep sounds, LED light, and vibration.

ALUMINUM ALLOY MATERIAL SHOCKPROOF AND FALL RESISTANT

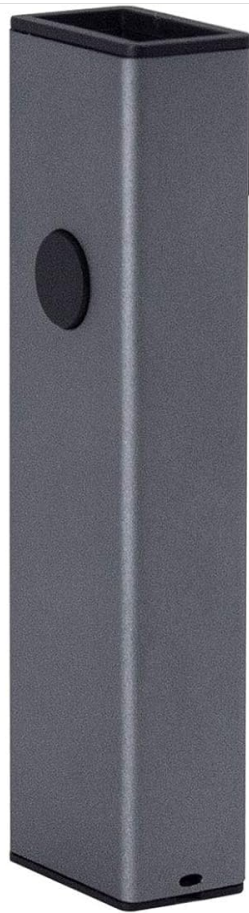


INDUSTRIAL ALUMINUM PROFILE



404 ALUMINUM ALLOY MATERIAL

Image 3.1: The scanner features an aluminum alloy construction, providing shockproof and fall-resistant properties.



3 kinds of scanning indication:

1:Beep



2:LED light



3:Vibrate



Support Multi-Languages



Image 3.2: The scanner provides three types of feedback for successful scans: an audible beep, an LED light indicator, and a vibration.

4. SETUP

The MJ-X8DA scanner offers flexible connectivity options to suit your operational needs.

4.1 Wired Connection

To use the scanner in wired mode, connect it directly to your computer using the provided USB cable. The cable serves both for charging and data transmission. The scanner will function as a keyboard input device, and no additional drivers are typically required.

4.2 2.4G Wireless Connection

For 2.4G wireless operation, plug the included USB wireless dongle into an available USB port on your computer. The scanner will automatically connect to the dongle. This mode offers a transmission distance of approximately 150m (492ft) in open spaces and 30m (98ft) indoors.

4.3 Bluetooth Connection

To connect via Bluetooth:

1. Ensure the scanner is powered on and in Bluetooth pairing mode (refer to the specific barcode in the full user manual to activate Bluetooth pairing mode).
2. On your host device (laptop, PC, mobile phone, tablet), enable Bluetooth and search for available devices.
3. Select the Symcode scanner from the list of found devices to pair.
4. Once paired, the scanner will function wirelessly.

Bluetooth transmission distance is approximately 50m (164ft) in open spaces and 15m (49ft) indoors.

Support wired and wireless modes

Wired modes



Wireless modes

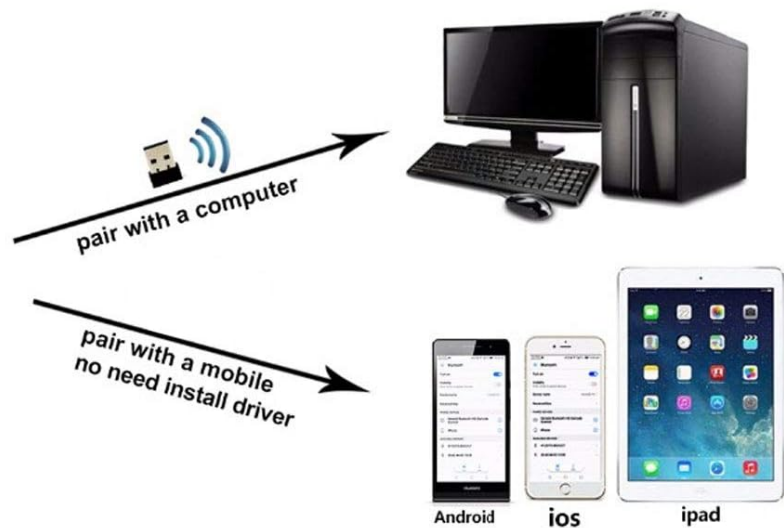


Image 4.1: The scanner supports both wired USB connection for charging and data, and wireless modes via a USB dongle or Bluetooth for various devices.



Image 4.2: The scanner can connect wirelessly via Bluetooth to a wide range of devices, including laptops, smartphones (iOS and Android), and other compatible systems.

5. OPERATING MODES

The Symcode MJ-X8DA scanner supports different operating modes to manage scanned data.

5.1 Instant Upload Mode

In this mode, scanned barcodes are immediately transmitted to the connected device (computer, phone, tablet) as keyboard input. This is the default mode and is suitable for real-time data entry.

5.2 Storage Mode

When operating in storage mode, the scanner saves all scanned barcodes internally. This is useful when working out of range of a host device. The scanner can store up to 10,000 codes. To upload the stored data, connect the scanner to a compatible device and scan the appropriate 'Upload Data' configuration barcode from the full user manual.

Large capacity

Barcode scanner come with 16M storage capacity. Safe and reliable, it can store more than 50000 codes on storage working mode.



16M



Image 5.1: The scanner features a large internal storage capacity, capable of saving thousands of barcode entries for later upload.

6. BARCODE SYMBOLOGIES SUPPORTED

The MJ-X8DA scanner is capable of decoding a wide array of 1D and 2D barcode types:

6.1 1D Barcodes

- UPC/EAN (including with Supplemental)
- Code 39 (including Full ASCII, Trioptic Code 39)
- Code 128 (including Full ASCII, extended ASCII support)
- Codabar
- Interleaved 2 of 5
- Discrete 2 of 5
- Code 93
- MSI
- Code 11

- RSS variants
- Chinese 2 of 5

6.2 2D Barcodes

- PDF417
- QR Code
- Data Matrix
- Aztec
- Maxicode

Note: Stacked PDF417 on ID Cards/Driver's Licenses are not supported.



Image 6.1: The scanner is shown in use, demonstrating its ability to read barcodes from packages and its compatibility with various operating systems and multi-language support.

7. CONFIGURATION OPTIONS

The scanner offers extensive customization through configuration barcodes found in the comprehensive user manual. These options allow you to tailor the scanner's output to specific requirements.

- **Prefix and Suffix:** Add custom characters before or after the scanned data.
- **Character Deletion:** Remove a specified number of characters from the beginning or end of a scanned barcode. For example, you can configure it to omit the first 9 digits of certain tracking numbers.
- **Keyboard Keys/Combinations:** Integrate specific keyboard functions or combinations into the scanning operation.

For detailed instructions on how to apply these configurations, please refer to the dedicated section in the complete user manual that accompanies your product.

8. MAINTENANCE

Proper maintenance ensures the longevity and optimal performance of your Symcode MJ-X8DA scanner.

- **Cleaning:** Use a soft, dry cloth to clean the scanner's exterior. For the scanning window, use a lens cleaning cloth to avoid scratches. Do not use abrasive cleaners or solvents.
- **Battery Charging:** The scanner has a battery life of approximately 30 hours of continuous operation. A full charge takes about 2.5 hours. Charge the device using the provided USB cable connected to a compatible power source (DC5V±0.25v).
- **Storage:** Store the scanner in a cool, dry place away from direct sunlight and extreme temperatures when not in use.
- **Firmware Updates:** Periodically check the Symcode official website for any available firmware updates to ensure your scanner has the latest features and performance improvements.

9. TROUBLESHOOTING

If you encounter issues with your Symcode MJ-X8DA scanner, refer to the following common troubleshooting steps:

9.1 Scanner Not Connecting

- **Wired:** Ensure the USB cable is securely connected to both the scanner and the computer. Try a different USB port or cable.
- **2.4G Wireless:** Verify the USB dongle is properly inserted into the computer. Ensure the scanner is within range of the dongle.
- **Bluetooth:** Confirm Bluetooth is enabled on your host device and the scanner is in pairing mode. Delete previous pairings on your device and re-attempt pairing. Ensure the scanner is within Bluetooth range.

9.2 Barcodes Not Scanning

- **Battery Level:** Check if the scanner's battery is sufficiently charged.
- **Barcode Type:** Ensure the barcode symbology is supported by the scanner (refer to Section 6).
- **Barcode Quality:** Scan a clear, undamaged barcode. Blurry or incomplete barcodes may be difficult to read.
- **Scanning Distance:** Adjust the distance between the scanner and the barcode.
- **Configuration:** If specific barcode types are not scanning, you may need to enable them using configuration barcodes from the full user manual.

9.3 Incorrect Data Output

- **Configuration:** Review your scanner's configuration settings (e.g., prefix/suffix, character deletion) using the full user manual. Incorrect settings can alter the output.

- **Keyboard Layout:** Ensure your computer's keyboard layout matches the scanner's configured output if you are experiencing character discrepancies.




For more complex issues or specific error codes, consult the detailed troubleshooting section in the complete user manual or contact Symcode customer support.

10. SPECIFICATIONS

Feature	Specification
Model	MJ-X8DA
Input Voltage	DC5V±0.25v
Current (Work)	25 mA
Current (Instantaneous)	95 mA
Decoding Speed	100 times / sec
Wireless Range (2.4G, Open Space)	40m (131ft) - Note: Product description states 150m/492ft, using 40m from specs.
Wireless Range (Bluetooth, Open Space)	50m (164ft)
Charging Time	2.5 Hours
Battery Life	30 Hours
Battery Type	1 Lithium Ion battery (included)
Item Weight	4.6 ounces
Package Dimensions	5.71 x 2.91 x 2.05 inches
Connectivity Technology	Bluetooth, USB Cable, 2.4G Wireless
Sensor Type	CMOS

11. WARRANTY AND SUPPORT

Symcode products are designed for reliability and performance. For any questions, technical assistance, or warranty inquiries, please contact Symcode customer support through their official channels. Refer to the packaging or the Symcode website for the most current contact information.

<p>2D Barcode Scanner User Manual</p> <p>BROCHURE</p> 	<p>Symcode MJ-340 2D Barcode Scanner User Manual</p> <p>Comprehensive user manual for the Symcode MJ-340 2D Barcode Scanner, covering setup, performance specifications, communication modes, and configuration options.</p>
	<p>2.4G Wireless Barcode Scanner User's Guide Symcode</p> <p>Comprehensive user's guide for the Symcode 2.4G Wireless Barcode Scanner, detailing features, performance parameters, operating modes, setup options, and specifications.</p>
<p>1D Barcode Scanner User Manual</p> <p>Barcode Scanner Quick Set-up V2.0</p>	<p>1D Barcode Scanner User Manual V2.0</p> <p>This user manual provides comprehensive instructions for the 1D Barcode Scanner, version 2.0. It covers setup, installation, scanning modes, configuration options, and technical specifications. Learn how to efficiently use the scanner in various commercial and industrial applications.</p>
<p>Bluetooth/2.4G Wireless Barcode Scanner</p> <p>User's manual</p> <p>BROCHURE</p>	<p>Bluetooth/2.4G Wireless Barcode Scanner User Manual</p> <p>Comprehensive user manual for the Bluetooth/2.4G Wireless Barcode Scanner, covering features, setup procedures, operating modes, troubleshooting, and indicator explanations.</p>
<p>TFT Screen Intellectual Wireless Barcode Scanner</p> <p>User's manual</p>  <p>BROCHURE</p>	<p>TFT Screen Intellectual Wireless Barcode Scanner User Manual</p> <p>User manual for the TFT Screen Intellectual Wireless Barcode Scanner, detailing its features, applications, and operating instructions. Learn about its triple-mode connectivity, large storage capacity, and ergonomic design.</p>

Note: Please print it on A4 paper before scanning,
and then scan 5 setting codes in sequence.

Continuous Mode



















































































































































































































































































































































