

ChunHee SL02-3

ChunHee Solar Sound & Light Alarm (Model SL02-3) Instruction Manual

Outdoor Motion Sensor with 129dB Siren and 6 LED Flash Warning

1. PRODUCT OVERVIEW

The ChunHee Solar Sound & Light Alarm (Model SL02-3) is an outdoor security device designed to deter intruders and animals using a loud siren and flashing lights. It is solar-powered with a USB charging backup, making it suitable for various outdoor applications.

Key Features:

- **129dB Siren and 6 LED Flash Warning:** Provides a powerful deterrent that can be heard and seen from a distance.
- **Motion Sensor:** Detects movement within a 5-8 meter range and a 125° sensing angle.
- **Durable Design:** Sturdy ABS casing with IP65 waterproof and dustproof rating for outdoor use.
- **Multiple Operating Modes:** Four selectable modes for different security needs.
- **Dual Charging:** Supports solar charging as the primary power source and USB charging for backup during prolonged cloudy periods.

Motion sensor alarm outdoor

solar alarm lights stop them from these unwelcome adventure vandals!



129dB

5V*0.6W
solar polysilicon panel

6LED

Figure 1: Front view of the ChunHee Solar Sound & Light Alarm, highlighting its compact design and motion sensor.

2. PACKAGE CONTENTS

Verify that all items are present in your package:

- ChunHee Solar Motion Sensor Alarm Light (3 units for this model)
- USB Charging Cable (3 units)
- Installation Kit (3 sets of screws and wall plugs)

Charging Methods

High conservation solar charging



Figure 2: Illustration of the alarm units, USB cables, and installation kit included in the package.

3. SETUP AND INSTALLATION

Follow these steps to set up and install your ChunHee Solar Sound & Light Alarm:

1. **Initial Charge:** Before first use, ensure the device is fully charged. Place the solar panel in direct sunlight for at least 8 hours, or use the provided USB cable for DC charging (less than 1 hour).
2. **Select Location:** Choose a location that receives ample direct sunlight for optimal solar charging. The device should be positioned to cover the desired detection area.
3. **Mounting:** Use the included installation kit to securely mount the alarm to a wall, fence post, or other suitable surface. The device features a stainless steel rack for easy screw-in mounting.
4. **Power On:** Locate the ON/OFF button on the back of the device. Press it once to activate the alarm.

No More Headache From The 'Unwanted Explorers'



Figure 3: Detailed view of the alarm's back panel, showing the solar panel, ABS casing, motion sensor, stainless steel rack, DC charging port, and ON/OFF button.

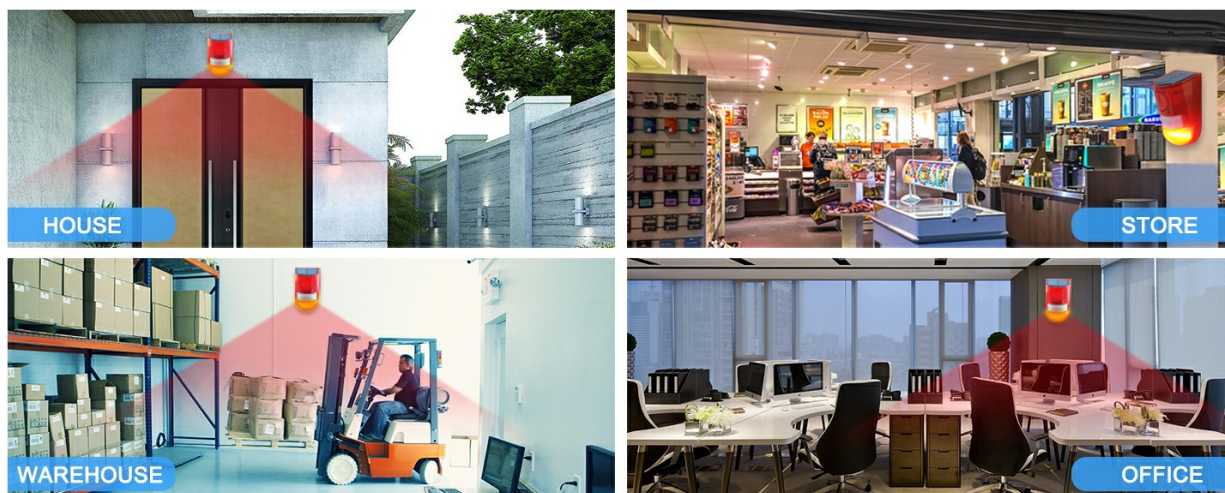


Figure 4: Example of mounting the alarm on a fence to create a perimeter alert system.

4. OPERATING INSTRUCTIONS

The ChunHee Solar Sound & Light Alarm features four operating modes. Press the power button on the back of the device to cycle through the modes.

Mode	Description	Activation
Mode 1: 24-hour Sound and Light Alarm	The alarm will activate with both sound and flashing lights upon motion detection, operating continuously for 24 hours.	Press power button once.
Mode 2: 24-hour Flash Silent Alarm	The alarm will activate with flashing lights only upon motion detection, operating continuously for 24 hours without sound.	Press power button a second time.
Mode 3: Night Sound and Light Alarm	The alarm will activate with both sound and flashing lights upon motion detection, operating only during nighttime (12 hours). It charges during the day.	Press power button a third time.
Mode 4: Night Flash Silent Alarm	The alarm will activate with flashing lights only upon motion detection, operating only during nighttime (12 hours) without sound. It charges during the day.	Press power button a fourth time.
Turn Off	Deactivates the alarm.	Press power button a fifth time.

Note: To switch between modes, ensure the solar panel is exposed to light (day state) or covered (night state) as appropriate for modes 3 and 4 to register correctly.



Figure 5: Visual representation of the four working modes and how to select them.

Your browser does not support the video tag.

Video 1: Demonstration of how to operate the ChunHee Solar Motion Sensor Alarm, including mode switching.

5. CHARGING

The alarm supports two charging methods:

- **Solar Charging:** The integrated solar panel charges the internal battery during daylight hours. Ensure the device is placed in an area with direct sunlight for optimal charging. A full solar charge takes approximately 8 hours.
- **USB Charging:** For faster charging or during prolonged periods of low sunlight, use the provided USB cable. Connect the cable to the DC charging port on the back of the device and a 5V USB power adapter (not included). DC charging takes less than 1 hour.

Two Charging Modes



Charging Method :solar charging time:8 hours ,DC charging time<1 huors (support USB interface charging with over charge)

Figure 6: Illustration of the two charging methods: solar charging and DC USB charging.

6. MAINTENANCE

To ensure optimal performance and longevity of your ChunHee Solar Sound & Light Alarm, follow these maintenance guidelines:

- **Clean Solar Panel:** Regularly wipe the solar panel with a soft, damp cloth to remove dust, dirt, or debris that may obstruct sunlight and reduce charging efficiency.
- **Check Mounting:** Periodically inspect the mounting screws and bracket to ensure the device remains securely attached.
- **Battery Life:** The device uses a Lithium-Ion battery. While designed for long-term use, battery performance may degrade over time. Ensure regular charging to maintain battery health.
- **Weather Resistance:** The device is IP65 waterproof and dustproof, designed to withstand outdoor

conditions. However, avoid submerging it in water or exposing it to extreme temperatures beyond its operating range.

7. TROUBLESHOOTING

If you encounter issues with your ChunHee Solar Sound & Light Alarm, refer to the following common problems and solutions:

Problem	Possible Cause	Solution
Alarm not activating.	Low battery, incorrect mode selected, motion sensor obstructed.	Charge the device fully. Ensure the correct operating mode is selected. Clear any obstructions from the motion sensor.
Siren is too loud/quiet (no volume control).	The device has a fixed siren volume (129dB).	Consider placement further from residential areas if noise is an issue, or use flash-only modes.
False alarms.	Movement from trees/foilage, small animals, or strong winds.	Adjust the mounting angle or location to minimize detection of non-threats. Consider using night-only modes if daytime false alarms are frequent.
Device not charging via solar.	Insufficient sunlight, dirty solar panel.	Relocate the device to an area with more direct sunlight. Clean the solar panel. Use USB charging as an alternative.

Your browser does not support the video tag.

Video 2: A short video demonstrating the motion detection and alarm activation of the ChunHee Solar Alarm.

8. SPECIFICATIONS

Feature	Detail
Model Number	SL02-3
Brand	ChunHee
Power Source	Solar Powered
Battery Type	Lithium-Ion (3 AAA batteries required, included)
Voltage	5 Volts (DC)
Noise Level	129 Decibels
Motion Sensor Range	5-8 Meters
Sensing Angle	125 Degrees

Feature	Detail
Control Method	Touch (button)
Mounting Type	Screw-In (Wall-Mounted)
Material	Sturdy made & corrosion-resistant plastic (ABS)
Product Dimensions	3.94 x 4.72 x 3.94 inches (10 x 12 x 10 cm)
Item Weight	1.15 pounds
Usage	Indoor/Outdoor
Waterproof Rating	IP65

9. WARRANTY AND SUPPORT

The ChunHee Solar Sound & Light Alarm comes with a **1-year warranty** from the date of purchase. For technical support, warranty claims, or any questions regarding your product, please contact ChunHee customer service through the retailer where the product was purchased or visit the official ChunHee store page on Amazon: [ChunHee Store](#).