

Allewie AK-JHH005

Allewie Queen Size Platform Bed Frame Instruction Manual

Model: AK-JHH005

1. SAFETY INFORMATION

For safe use of this bed frame, ensure correct assembly. Always use appropriate bedding. Do not exceed the maximum weight capacity of **800 lbs** to prevent structural failure and potential injury. Keep small parts away from children during assembly.

2. PRODUCT OVERVIEW

The Allewie Queen Size Platform Bed Frame (Model AK-JHH005) offers a sturdy and stylish foundation for your mattress. Featuring a rustic wooden headboard and footboard combined with a retro frosted metal frame, it provides a modern industrial aesthetic. The design includes 12 heavy-duty metal slats and 9 support legs for enhanced stability and durability, supporting up to 800 lbs. With 12 inches of under-bed clearance, it offers convenient storage space. The frame is engineered for noise-free operation, incorporating non-slip strips on the slats and plastic foot plugs to protect your floors.



Image 2.1: Fully assembled Allewie Queen Size Platform Bed Frame in Walnut.

Key Features:

- **Sturdy Construction:** 12 strong steel slats and 9 independent support legs ensure durability and a weight capacity of 800 lbs.
- **Unique Design:** Combines rustic wooden headboard/footboard with retro frosted metal for an industrial style.
- **Under-Bed Storage:** 12 inches of clearance provides ample space for storage.
- **Noise-Free Operation:** Non-slip strips on slats and plastic foot plugs prevent noise and protect floors.
- **Easy Assembly:** Designed for straightforward setup with all tools included.



Unique Design



Rustic Styled
Wood Board



Retro Frosted
Matte Metal

Image 2.2: Detail of the unique design elements: rustic wood board and retro frosted matte metal.

Underbed Storage

12 inches off the ground, Idea storage space.
Storing stuff and easy cleaning.



Image 2.3: Illustration of the 12-inch under-bed storage space.



Embedded Design
Prevent mattresses from slipping



Noise-Free Design
No friction noise



Protective Pad
Prevent the floor from scratches



Image 2.4: Features highlighting noise-free design, embedded mattress support, and protective pads.

3. SETUP AND ASSEMBLY

This bed frame is designed for easy assembly. All necessary hardware and tools are included. Follow the step-by-step instructions provided in the package. It is recommended to have two people for assembly. Ensure all parts are correctly oriented before tightening screws. Pay special attention to labels, such as the 'UP' indicator on certain parts, to ensure proper alignment.

Notice

Please make sure the label is “up” and exposed when install.

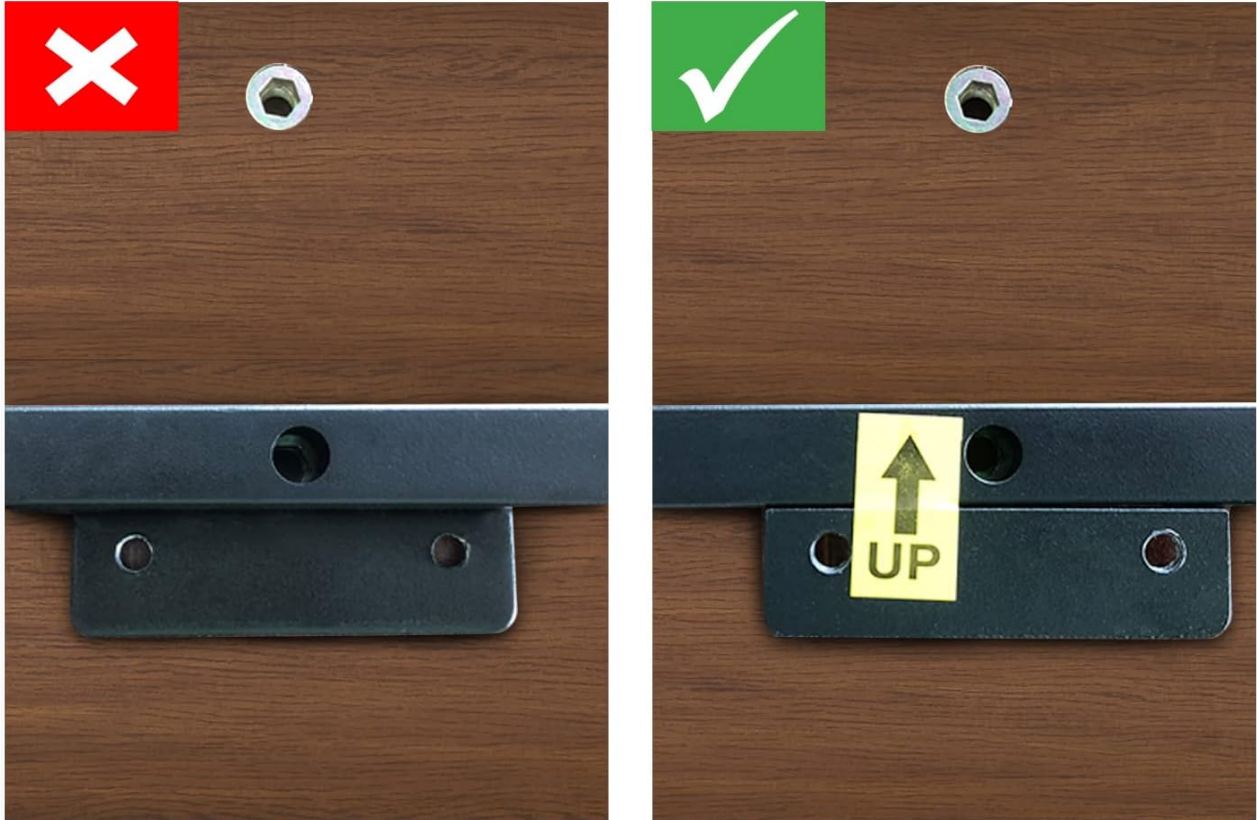


Image 3.1: Important notice regarding the 'UP' label for correct part orientation during assembly.

QUEEN SIZE

L * W * H : 84 * 63 * 39 in.

Max Capacity: 800 lbs
Recommend Mattress Thickness: 10-14 in.



Image 3.2: Dimensional drawing of the Queen size bed frame, showing overall length, width, and height.

4. OPERATING INSTRUCTIONS

Once assembled, place your mattress directly onto the metal slats. A box spring is not required. The frame is compatible with mattresses between **10 to 14 inches** in thickness for optimal headboard visibility and comfort. The embedded design helps prevent mattress slippage.

Matched with Mattresses of Different Heights



Recommend
Mattress Thickness :
10-14 in



Image 4.1: Recommended mattress thickness for optimal fit and appearance.

5. MAINTENANCE

To maintain the appearance and longevity of your bed frame, wipe all surfaces with a dry, soft cloth. Avoid using harsh chemicals or abrasive cleaners, as these may damage the finish of the metal or wood components.

6. TROUBLESHOOTING

Noise Issues:

- If the bed frame produces noise, check all screws and bolts to ensure they are securely tightened.
- The frame is designed with non-slip strips on the slats to minimize friction noise. Ensure these strips are intact and properly positioned.

Mattress Sliding:

- The embedded design of the frame helps prevent mattress movement. Ensure your mattress is correctly centered on the frame.
- For lighter mattresses, additional non-slip pads can be placed between the mattress and the slats if needed.

7. SPECIFICATIONS

Feature	Detail
Brand	Allewie
Model Number	AK-JHH005
Size	Queen
Material	Metal & Wood (Waterproof & Scratchproof)
Product Dimensions (L x W x H)	84" x 63" x 39"
Weight Capacity	800 lbs
Recommended Mattress Thickness	10-14 inches
Under-Bed Clearance	12 inches
Included Components	Bed Frame, Footboard, Hardware Pack, Headboard, Slats
Product Care Instructions	Wipe with Dry Cloth
Assembly Required	Yes
Color	Walnut
Finish Type	Powder Coated
Item Weight	73.8 Pounds

8. WARRANTY AND SUPPORT

For warranty information or technical support, please refer to the documentation included with your purchase or contact Allewie customer service directly. Contact details are typically found on the product packaging or the manufacturer's official website.