

Joomer GP-SW240DC0250-IP44(US) A

Joomer 66FT 200 LED Color Changing String Lights Instruction Manual

Model: GP-SW240DC0250-IP44(US) A

1. INTRODUCTION

Thank you for choosing Joomer Color Changing String Lights. This manual provides essential information for the safe and efficient operation of your new lighting product. Please read it thoroughly before installation and use, and retain it for future reference.

2. SAFETY INFORMATION

- **Power Adapter:** Do not cover the power adapter during operation. Ensure it is placed in a well-ventilated area.
- **Remote Control:** Remove the insulation sheet from the remote control before use. Point the remote directly at the adapter for proper control.
- **Timer Function:** Avoid using timed power outlets when utilizing the built-in timer function to ensure accurate timing.
- **Waterproof Rating:** The lights are IPX7 waterproof, suitable for outdoor use. However, ensure the power adapter connection is protected from direct water exposure.
- **Installation:** Ensure all connections are secure before plugging in the lights. Do not attempt to modify or repair the product yourself.

3. PACKAGE CONTENTS

Your Joomer Color Changing String Lights package includes:

- 1 x Joomer 66FT 200 LED Color Changing String Lights

- 1 x 24V Low Voltage Plug (Power Adapter)
- 1 x Remote Control with Receiver
- 1 x Instruction Manual (This document)



Image: Contents of the Joomer 200 LED Color Changing String Lights package, including the coiled lights, remote control, and power adapter.

4. SETUP

1. **Unpack:** Carefully remove all components from the packaging.
2. **Uncoil Lights:** Gently uncoil the string lights, ensuring they are not tangled.
3. **Connect Power Adapter:** Connect the string lights to the 24V low voltage power adapter. Ensure the connection is firm.
4. **Insert Remote Battery:** Remove the plastic insulation sheet from the remote control's battery compartment.
5. **Placement:** Position the lights in your desired indoor or outdoor location. Ensure the power adapter is in a dry, protected area if used outdoors.
6. **Plug In:** Plug the power adapter into a standard electrical outlet.



8 Modes

Timer Function

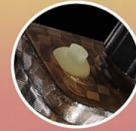
Speed Adjustable

Brightness Adjustable

Note: Please aim the remote control at the adapter.



Timer OFF



Timer ON



Image: Joomer lights installed on a house and trees, demonstrating both warm white and multicolor settings.

5. OPERATING INSTRUCTIONS

The Joomer Color Changing String Lights are operated using the included 21-key remote control. Ensure the remote is pointed directly at the power adapter's receiver for optimal functionality.

5.1 Remote Control Functions



Image: Detailed diagram of the 21-key remote control, highlighting buttons for power, color selection, modes, dimming, speed, and timer functions.

- **ON/OFF:** Press **ON** to turn lights on, **OFF** to turn lights off.
- **TIMER OFF:** Deactivates any active timer setting.
- **Color Selection:**
 - **Warm White:** Activates warm white lighting.
 - **Multicolor:** Activates multicolor lighting.
 - **MIX Color:** Activates a blend of 50% Warm White and 50% Multicolor.
- **Lighting Modes (6 Vivid Modes):**
 - **Steady On:** Lights remain constantly lit.
 - **Fade:** Lights slowly fade in and out.
 - **Flash:** Lights flash rapidly.
 - **Sequential:** Lights cycle through different patterns.
 - **In Waves:** Lights illuminate in a wave-like pattern.
 - **Slo-Glo:** Lights slowly glow on and off.
 - **Breathing:** Lights gently brighten and dim.
 - **Twinkle:** Lights twinkle randomly.

- **Brightness Adjustment:** Use the ✨+ and ✨- buttons to adjust brightness (100%, 75%, 50%, 25%).
- **Speed Adjustment:** Use the **Speed+** and **Speed-** buttons to adjust the speed of dynamic modes (4 settings).
- **Timer Functions:** Select from **4H Timer**, **6H Timer**, or **8H Timer** to set the lights to automatically turn off after the selected duration and turn on again at the same time the next day.

5.2 Memory Function

The built-in memory chip retains your last selected mode settings (color, mode, brightness, speed, and timer) even after the lights are turned off and on again, or unplugged.

Your browser does not support the video tag.

Video: An official product video from Joomer Direct demonstrating the color changing, dimming, speed, and timer functions of the string lights using the remote control.

6. CONNECTING MULTIPLE SETS

These string lights are designed for end-to-end connection, allowing you to extend your lighting display. You can connect up to 3 sets of Joomer 200 LED string lights, totaling 195 feet with 600 LEDs, from a single power source.

1. Locate the male connector at one end of a light set and the female connector at the other end.
2. Align the connectors of two sets and push them firmly together until they click into place.
3. Ensure the connection is sealed tightly to maintain waterproof integrity, especially for outdoor use.
4. Repeat for additional sets, up to a maximum of 3 sets.



Image: Illustration demonstrating how multiple sets of Joomer string lights can be connected end-to-end.

7. MAINTENANCE

- **Cleaning:** Disconnect from power before cleaning. Wipe lights gently with a soft, dry cloth. Do not use harsh chemicals or abrasive cleaners.
- **Storage:** When not in use, carefully coil the lights and store them in a cool, dry place away from direct sunlight. Avoid tangling to prevent damage to the wires.
- **Inspection:** Periodically inspect the lights, wires, and adapter for any signs of damage. Discontinue use if any damage is found.

8. TROUBLESHOOTING

Problem	Possible Cause	Solution
Lights do not turn on.	No power, loose connection, remote battery dead/insulation not removed.	Check power outlet, ensure all connections are secure, replace remote battery or remove insulation tab.
Remote control not responding.	Remote not pointed at adapter, obstruction, low/dead remote battery.	Point remote directly at the adapter, remove obstructions, replace remote battery.
Lights are dim or flickering.	Brightness setting too low, power supply issue.	Increase brightness using remote, check power adapter for damage.
Timer function not working correctly.	Using external timer, incorrect timer setting.	Disable external timers, re-select desired timer duration on remote.

9. SPECIFICATIONS

- **Model:** GP-SW240DC0250-IP44(US) A
- **Length:** 66 Feet (20 meters)
- **Number of LEDs:** 200
- **Light Colors:** Warm White, Multicolor, Mixed Color
- **Power Source:** Corded Electric (24V Low Voltage Plug)
- **Control Method:** 21-Key Remote Control
- **Special Features:** Color Changing, Dimmable (4 levels), Linkable (up to 3 sets), Timer (4H/6H/8H), Memory Function
- **Indoor/Outdoor Usage:** Indoor, Outdoor
- **Waterproof Rating:** IPX7
- **Material:** Copper

10. WARRANTY AND SUPPORT

Joomer products are designed for quality and durability. For warranty information, technical support, or any questions regarding your product, please contact Joomer customer service through the retailer's platform or visit the official Joomer website.

Please retain your purchase receipt as proof of purchase for warranty claims.

