

Crown CT11023

Crown CT11023 Multi-function Plunge Router 6mm 710W User Manual

Model: CT11023

1. INTRODUCTION

This manual provides essential information for the safe and effective operation, maintenance, and troubleshooting of your Crown CT11023 Multi-function Plunge Router. Please read this manual thoroughly before using the tool to ensure proper handling and to prevent injury or damage.

1.1 Safety Information

Always observe general power tool safety guidelines. Failure to follow these instructions may result in electric shock, fire, and/or serious injury.

- **Work Area Safety:** Keep the work area clean and well-lit. Cluttered or dark areas invite accidents.
- **Electrical Safety:** Do not expose power tools to rain or wet conditions. Avoid body contact with earthed or grounded surfaces.
- **Personal Safety:** Always wear eye protection, hearing protection, and a dust mask. Dress properly; avoid loose clothing or jewelry.
- **Tool Use and Care:** Do not force the power tool. Use the correct power tool for your application. Disconnect the plug from the power source before making any adjustments, changing accessories, or storing power tools.

1.2 Intended Use

The Crown CT11023 Multi-function Plunge Router is designed for routing wood, plastic, and similar materials. It is suitable for creating decorative edges, grooves, dados, and other woodworking joints. This tool is intended for domestic and light professional use.

2. PRODUCT OVERVIEW

Familiarize yourself with the components of your Crown CT11023 Plunge Router before operation.



Figure 2.1: Overall view of the Crown CT11023 Multi-function Plunge Router. This image displays the main body, handles, depth adjustment mechanism, and power switch.

2.1 Main Components

1. **Motor Housing:** Contains the electric motor.
2. **Handles:** Ergonomic grips for control during operation.
3. **Power Switch:** On/Off control for the motor.
4. **Depth Adjustment Knob:** Used to precisely set the routing depth.
5. **Plunge Lock Lever:** Secures the router at a desired depth.
6. **Collet Nut:** Secures the router bit in place.
7. **Base Plate:** Provides a stable surface for guiding the router over the workpiece.
8. **Dust Extraction Port:** For connecting a dust collection system (if applicable).



Figure 2.2: Side view of the Crown CT11023 Router, illustrating a fixed base attachment. This configuration is often used for edge routing or when a compact form factor is preferred.



Figure 2.3: Another side view of the Crown CT11023 Router, showing a different base configuration, potentially for trimming or specialized routing tasks. Note the black grip for enhanced control.

3. SETUP

3.1 Bit Installation

1. Ensure the router is unplugged from the power source.
2. Press and hold the spindle lock button (if present) to prevent the spindle from rotating.
3. Loosen the collet nut using the provided wrench.
4. Insert the router bit into the collet, ensuring at least 3/4 of the shank is seated. Do not bottom out the bit.
5. Tighten the collet nut firmly with the wrench. Do not overtighten.
6. Release the spindle lock.

3.2 Depth Adjustment

1. Ensure the router is unplugged.
2. Place the router on a flat surface with the desired bit installed.
3. Release the plunge lock lever.
4. Lower the router until the bit touches the workpiece surface.
5. Engage the plunge lock lever to hold the router at this zero depth.
6. Adjust the depth adjustment knob or scale to the desired routing depth.
7. Release the plunge lock lever before starting the router.

4. OPERATING

4.1 Powering On/Off

- **To Turn On:** Ensure the router bit is clear of the workpiece. Press the power switch to the "ON" position. Allow the motor to reach full speed before contacting the workpiece.
- **To Turn Off:** Release the power switch or press it to the "OFF" position. Wait for the bit to stop completely before setting the tool down.

4.2 Routing Techniques

- **Direction of Feed:** Always feed the router against the rotation of the bit. This provides better control and prevents the router from "climbing" over the workpiece.
- **Shallow Cuts:** For deeper cuts, make multiple shallow passes instead of one deep pass. This reduces strain on the motor and bit, and improves cut quality.
- **Workpiece Securement:** Always clamp your workpiece securely to a stable surface.
- **Practice:** Practice on scrap material before routing your final workpiece.

5. MAINTENANCE

Regular maintenance ensures the longevity and safe operation of your router.

5.1 Cleaning

- Always unplug the tool before cleaning.
- Use a soft brush or compressed air to remove dust and debris from the ventilation openings and around the collet area.
- Wipe the exterior with a damp cloth. Do not use harsh chemicals or solvents.
- Keep the base plate clean to ensure smooth gliding over the workpiece.

5.2 Storage

- Store the router in a dry, secure location, out of reach of children.
- Ensure the power cord is neatly coiled and not kinked.
- Remove any router bits from the collet before storage.

6. TROUBLESHOOTING

This section addresses common issues you might encounter with your router.

Problem	Possible Cause	Solution
Router does not start.	No power supply; faulty switch; motor issue.	Check power connection. Ensure switch is "ON". If problem persists, consult qualified service personnel.
Poor cut quality (e.g., burning, rough edges).	Dull bit; incorrect feed rate; wrong bit for material; excessive depth of cut.	Replace or sharpen bit. Adjust feed rate. Use appropriate bit. Make multiple shallow passes.
Excessive vibration.	Loose bit; bent bit; damaged bearings.	Ensure bit is securely tightened. Replace bent bit. If bearings are suspected, seek professional service.

7. SPECIFICATIONS




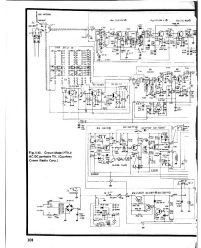


Technical data for the Crown CT11023 Multi-function Plunge Router.

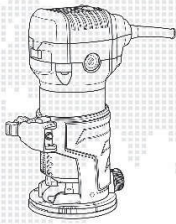
Feature	Detail
Model Number	CT11023
Brand	Crown
Power Source	Corded Electric
Power Input	710 W
Collet Size	6 mm
Item Weight	209 g (0.21 kg)
Product Dimensions	10 x 20 x 37 cm
Color	Grey-Black

8. WARRANTY AND SUPPORT

For warranty information, please refer to the warranty card included with your product or contact your local Crown dealer. Keep your purchase receipt as proof of purchase.

For technical support or service inquiries, please contact Crown customer service or an authorized service center. Contact details can typically be found on the manufacturer's official website or on the product packaging.

 <p>SP 3500 SERIES</p> <p>Specifications Performance Operator Controls</p>	<p>Crown SP 3580F Stockpicker: Specifications and Features</p> <p>Detailed specifications and key features of the Crown SP 3580F Four-Point Stockpicker, a versatile material handling equipment designed for warehouse operations. Includes dimensions, load capacity, performance data, and advanced system controls.</p>
 <p>D-150A II POWER AMPLIFIER OWNER'S MANUAL</p>	<p>Crown D-150A II Power Amplifier Owner's Manual</p> <p>Comprehensive owner's manual for the Crown D-150A II stereo power amplifier, detailing its features, installation, operation, and technical specifications for professional audio use.</p>
 <p>Operator Manual</p>	<p>Crown WP 3000 Series Operator Manual: Safety and Operation Guide</p> <p>Official operator manual for the Crown WP 3000 Series walkie pallet truck. Contains essential safety instructions, operational procedures, parts identification, and maintenance guidelines for certified users. Learn to operate your Crown pallet truck safely and efficiently.</p>
	<p>Crown 7TV-2 AC-DC Portable TV Schematic Diagram</p> <p>Detailed schematic diagram for the Crown Model 7TV-2 AC-DC portable television, illustrating RF, IF, audio, and power supply circuits with component designations.</p>
 <p>RD 5700 SERIES</p> <p>Specifications Performance Operator Controls</p>	<p>Crown RD 5700 Series Narrow-Aisle Reach Truck: Specifications and Technical Information</p> <p>Detailed specifications, features, and technical information for the Crown RD 5700 Series Narrow-Aisle Reach Truck, including dimensions, performance data, operator compartment details, and safety features.</p>
 <p>V-HFM³ SERIES</p> <p>High-Frequency Modular Chargers</p>	<p>Crown V-HFM3 Series High-Frequency Modular Chargers</p> <p>Discover the Crown V-HFM3 Series, a versatile, smart, and efficient modular battery charger designed for forklift fleets. Learn about its advanced intelligence, energy savings, flexibility, and seamless connectivity for lead-acid and lithium-ion batteries.</p>



- | | | | |
|----|------------------------------------|----|---------------------------------|
| 06 | Originalbetriebsanleitung | 09 | تعليمات التشغيل الأصلية |
| 07 | Originalanweisung | 10 | تعليمات التشغيل الأصلية |
| 11 | Notizen original | 11 | ملاحظات أصلية |
| 12 | Originalanweisung | 12 | تعليمات التشغيل الأصلية |
| 13 | Manual original | 13 | دليل التشغيل الأصلي |
| 14 | Manual original | 14 | دليل التشغيل الأصلي |
| 15 | Original-gesamte Betriebsanleitung | 15 | تعليمات التشغيل الأصلية الكاملة |
| 16 | Originalghebruiksaanwijzing | 16 | تعليمات التشغيل الأصلية |
| 17 | Povodni navod za uporabo | 17 | تعليمات التشغيل الأصلية |
| 18 | Povodny návod na použitie | 18 | تعليمات التشغيل الأصلية |

[\[pdf\]](#) User Manual Instructions

Инструкция по эксплуатации Фрезер кромоочный CROWN CT11023S 710вт на instrumentall md

Crown files shares |||

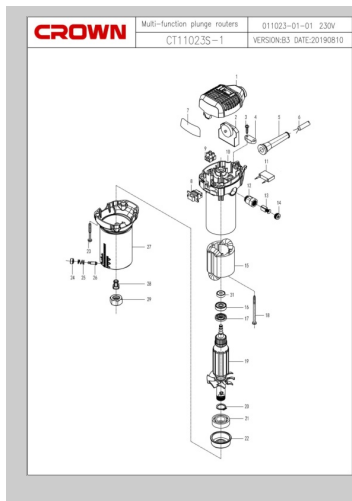
Inhalt / Content / Sommaire / Indice / Contenido / ndice / indekiler / Zawarto / Obsah /

Obsah / Co ... 12 13 14 15 16 17 18 19 20 21 Elektrowerkzeug - technische Daten

Kantenfrse **CT11023 CT11023S** Elektrowerkzeug - Code 220-240 V -50/60 Hz siehe

Seite 18-21 Nennaufnahme ...

lang:it score:29 filesize: 11.02 M page_count: 184 document date: 2023-01-18



[\[pdf\]](#)

Windows User Инструкция по эксплуатации Фрезер CROWN CT11023S 710Вт 13000 33000 6 8мм 3

базы купить в интернет магазине цены Кубань Инструмент 69341701670 kubaninstrument ru docs |||

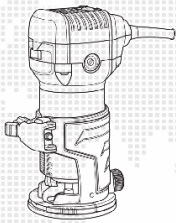
CT11023S CT11023-1 1-1 5001102300101 1 2-1 5001102300202 1 3-1

5001102300301 ST4x14 2 4-1 5001102300401 1 5-1 5001102300501 1 6-1

5001102300601 1 7-1 5001102300701 1 8-1 5001102300801 1 9-1 5001102300901

1 10-1 5001102301001 1 11-1 5001102301101 ...

lang:i-klingon score:27 filesize: 1.63 M page_count: 9 document date: 2022-07-19



- | | | | |
|----|----------------------------|----|---|
| 01 | Originalbenutzeranleitung | 06 | Interaktívny originál |
| 02 | Original instructions | 07 | Оригинальные инструкции |
| 03 | Notice originale | 08 | Помощник по обучению |
| 04 | Instructie origineel | 09 | Помощник по обучению (табло) |
| 05 | Manual original | 10 | Оригинальные инструкции с иллюстрациями |
| 11 | Manual original | 11 | Оригинальные инструкции с иллюстрациями |
| 12 | Original guide leaflet | 12 | Original instrukcja |
| 13 | Instrukcja oryginalna | 13 | Подсказки к использованию табло |
| 14 | Používání návodů k použití | 14 | نصائح للاستخدام |
| 15 | Používání návod na použití | 15 | نصائح للاستخدام |

[\[pdf\]](#) User Manual Instructions

Инструкция Купить фрезер кромочный CROWN CT11023 в Минске — TM by f610039 tm sites default

files content pf 202308 |||

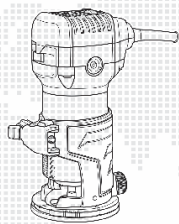
Inhalt / Content / Sommaire / Indice / Contenido / ndice / indekiler / Zawarto / Obsah /

Obsah / Co ... 5 6 7 8 9 10 11 12 13 14 15 Elektrowerkzeug - technische Daten

Kantenfrse **CT11023** Elektrowerkzeug - Code 220-240 V -50/60 Hz 423122

Nennaufnahme W 710 Ausgangsleis...

lang:it score:22 filesize: 5.75 M page_count: 164 document date: 2020-02-05



[\[pdf\]](#)

Инструкция по эксплуатации Фрезер кромочный CROWN CT11023S купить цене 12 994 руб в
Екатеринбурге «Мастер» 2ty1lcz2waqb8l8qnycbzgfx4vmzjdj62 megamaster ru upload iblock 4bc |||

...

lang:it score:12 filesize: 15.32 M page_count: 164 document date: 2020-02-05

- | | |
|-------------------------|--|
| 1 Original instructions | 10 Оригинальная инструкция |
| 2 Notice original | 11 Оригинальное предупреждение |
| 3 Instruction original | 12 Оригинальная инструкция по эксплуатации |
| 4 Manual original | 13 Оригинальная инструкция по эксплуатации |
| 5 Manual original | 14 Original instruction |
| 6 Original instruction | 15 Поддержка пользователей |
| 7 Original instruction | 16 Поддержка пользователей |
| 8 Original instruction | 17 Поддержка пользователей |
| 9 Original instruction | 18 Поддержка пользователей |