



Manuals.plus /

› Frestec /

› Frestec Small Refrigerator with Freezer User Manual

## Frestec Mini fridge HA-B90

# Frestec Small Refrigerator with Freezer User Manual

Model: Mini fridge HA-B90

## 1. INTRODUCTION

This user manual provides essential information for the safe and efficient operation of your Frestec Small Refrigerator with Freezer. Please read this manual thoroughly before installation and use, and retain it for future reference.

The Frestec Mini Fridge is a compact and energy-efficient appliance designed for small spaces such as bedrooms, dorms, and offices. It features a 3.1 cubic feet capacity, including a small freezer compartment, and offers adjustable temperature settings for optimal food preservation.

## 2. SAFETY INFORMATION

**WARNING: To reduce the risk of fire, electric shock, or injury, follow these basic precautions:**

- Ensure the refrigerator is placed on a stable, level surface.
- Do not block ventilation openings.
- Do not use mechanical devices or other means to accelerate the defrosting process, other than those recommended by the manufacturer.
- Do not damage the refrigerant circuit.
- Do not use electrical appliances inside the food storage compartments of the appliance, unless they are of the type recommended by the manufacturer.
- Unplug the refrigerator before cleaning or performing any maintenance.
- Keep flammable materials and vapors away from the refrigerator.
- This appliance is not intended for use by persons (including children) with reduced physical, sensory or mental capabilities, or lack of experience and knowledge, unless they have been given supervision or instruction concerning use of the appliance by a person responsible for their safety.

## 3. PACKAGE CONTENTS

Verify that all items listed below are included in your package:

- 1 x Frestec Compact Refrigerator
- 1 x User Manual
- 1 x Ice Cube Tray
- 1 x Crisper Drawer
- 2 x Removable Glass Shelf
- 1 x Drain Tray
- 3 x Reusable Storage Bags



Image: Interior view of the Frestec Mini Fridge, showcasing its storage compartments, including glass shelves, a crisper drawer, and door racks for beverages.

## 4. SETUP

### 4.1 Unpacking

Carefully remove all packaging materials. Ensure no parts are missing or damaged. Keep packaging materials out of reach of children.

### 4.2 Placement

- Place the refrigerator on a firm, level floor.

- Allow at least 4 inches (10 cm) of space around the back and sides for proper air circulation.
- Avoid direct sunlight or heat sources.
- The reversible door design allows for flexible placement in any room.

## Silky Surface

Dirt-resistant and perfectly integrated into the home

F R E S T E C

## 6 Gear Thermostat Control

Adjust temperature at any time according to your needs

## Confidence comes from a strong heart

Fast cooling and long-lasting work by R600a compressor



Image: Diagram showing the external dimensions of the Frestec Mini Fridge, highlighting its compact size for easy placement.

### 4.3 Leveling

The refrigerator comes with adjustable leveling legs. Turn the legs clockwise to raise the refrigerator or counter-clockwise to lower it until it is perfectly level. This helps ensure proper door sealing and efficient operation.

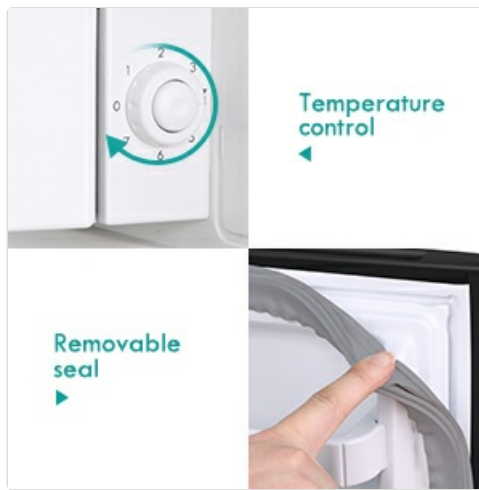


Image: Detailed view of the adjustable leveling leg, which can be rotated to stabilize the refrigerator on uneven surfaces.

#### 4.4 Initial Power-On

After placement, wait at least 24 hours before plugging in the refrigerator. This allows the refrigerant to settle. Once plugged in, the internal LED light will illuminate.

### 5. OPERATING INSTRUCTIONS

---

#### 5.1 Temperature Control

The refrigerator features a 6-setting adjustable thermostat control. The temperature ranges from 24.8°F to 50°F. Turn the dial to your desired setting. Higher numbers indicate colder temperatures.



Image: The temperature control dial, allowing users to select from 6 different cooling settings.

#### 5.2 Storage Organization

- The 2 removable glass shelves can be adjusted to accommodate items of various heights.
- Use the crisper drawer to keep fruits and vegetables fresh longer.
- The built-in can dispenser and door basket are ideal for bottles and cans.

# Say Goodbye For the Messy !

Keep all necessities well organized and easy to clean.



Drip tray



Removable Glass Shelf



Adjustable leveling leg



Image: Interior features of the refrigerator, including the drip tray, removable glass shelf, and a visual cue for the adjustable leveling leg.

## 6. MAINTENANCE

### 6.1 Cleaning

- Always unplug the refrigerator before cleaning.
- Clean the interior and exterior surfaces with a soft cloth and mild detergent.
- The removable door seal makes cleaning easy.
- Wipe dry thoroughly after cleaning.



Image: A hand removing the door seal, illustrating the ease of cleaning this component.

## 6.2 Defrosting

This compact fridge features a one-touch Easy Defrosting System. Press the designated button to initiate the defrosting process. Ensure to remove all food items before defrosting and clean up any melted ice water from the drain tray.

## 7. TROUBLESHOOTING

Problem	Possible Cause	Solution
Refrigerator does not operate.	Not plugged in; circuit breaker tripped; temperature control set to "0".	Ensure plug is secure; reset circuit breaker; adjust temperature control to a higher setting.
Temperature is not cold enough.	Door opened too frequently; warm food placed inside; poor air circulation; temperature setting too high.	Minimize door openings; allow hot food to cool before placing in fridge; ensure adequate space around unit; lower temperature setting.
Loud noise during operation.	Refrigerator is not level; parts are loose.	Adjust leveling legs to ensure stability; check for and tighten any loose components.
Excessive frost buildup.	Door not sealed properly; high humidity; frequent door openings.	Check door seal for damage or obstruction; ensure door is closed completely; minimize door openings. Use the one-touch defrost system.

If problems persist after attempting these solutions, please contact customer support.

## 8. SPECIFICATIONS

Feature	Detail
Brand	Frestec
Model	Mini fridge HA-B90
Capacity	3.1 Cubic Feet
Dimensions (D x W x H)	17.8 x 18 x 32.5 inches
Item Weight	48.4 pounds
Annual Energy Consumption	219 Kilowatt Hours Per Year
Noise Level	Below 37dB
Temperature Settings	6 (24.8°F to 50°F)
Defrost System	Frost Free
Shelf Type	Glass (2 removable)
Door Features	Reversible Door, Removable Door Seal
Certification	Energy Star





Image: Front view of the Frestec Mini Fridge, showcasing its sleek silver design.

## 9. WARRANTY AND SUPPORT

---

Frestec provides a **2-YEAR QUALITY PROMISE** for this product. For any questions, issues, or to claim warranty service, please contact Frestec customer support. Refer to the contact information provided on the product packaging or the official Frestec website.

For additional resources and product information, visit the [Frestec Store on Amazon](#).

