

## Philips BHD351/10

# Philips Series 3000 Hair Dryer BHD351/10 User Manual

## INTRODUCTION

This manual provides essential information for the safe and effective use of your Philips Series 3000 Hair Dryer BHD351/10. Please read these instructions carefully before first use and retain them for future reference.

## IMPORTANT SAFETY INFORMATION

Always observe the following basic safety precautions when using electrical appliances:

- Do not use this appliance near water.
- Always unplug the appliance after use.
- If the supply cord is damaged, it must be replaced by the manufacturer, its service agent, or similarly qualified persons to avoid a hazard.
- This appliance can be used by children aged from 8 years and above and persons with reduced physical, sensory or mental capabilities or lack of experience and knowledge if they have been given supervision or instruction concerning use of the appliance in a safe way and understand the hazards involved.
- Children shall not play with the appliance. Cleaning and user maintenance shall not be made by children without supervision.
- For additional protection, we advise you to install a residual current device (RCD) in the electrical circuit that supplies the bathroom. Ask your installer for advice.

## PRODUCT OVERVIEW

Familiarize yourself with the components of your Philips Series 3000 Hair Dryer.



Image: The Philips Series 3000 Hair Dryer BHD351/10, showcasing its charcoal/grey black body and white rear filter. This image displays

the overall design of the hair dryer.

## Attachments



Image: The ThermoProtect attachment (left) and a standard concentrator nozzle (right). The ThermoProtect attachment is designed to mix warm and cool air for a lower drying temperature, while the concentrator nozzle directs airflow for precise styling.

1. Concentrator Nozzle
2. ThermoProtect Attachment
3. Cool Shot Button
4. Speed Settings Switch (0-I-II)
5. Temperature Settings Switch (•---•••)
6. Air Inlet Grille
7. Hanging Loop

## SETUP

---

Before using your hair dryer, ensure it is properly set up.

1. **Unpacking:** Remove all packaging materials from the appliance.
2. **Attachment Installation:** To attach an accessory (concentrator or ThermoProtect), align it with the front of the hair dryer and push it on until it clicks into place. To remove, pull it off.
3. **Power Connection:** Plug the appliance into a suitable wall socket. Ensure the voltage indicated on the appliance corresponds to the local mains voltage.

## OPERATING INSTRUCTIONS

---

Follow these steps for effective hair drying and styling.



Image: A person using the Philips hair dryer to dry their hair. This demonstrates the typical use of the appliance for hair styling.

1. **Power On:** Switch the appliance on by sliding the speed setting switch to 'I' (gentle airflow) or 'II' (strong airflow).
2. **Select Temperature:**
  - • **(Cool):** For setting your style.
  - •• **(Warm):** For gentle drying.
  - ••• **(Hot):** For fast drying.
3. **ThermoProtect Setting:** When using the ThermoProtect attachment, the dryer automatically adjusts the temperature to prevent overheating while maintaining effective drying. This setting is ideal for protecting your hair from excessive heat.
4. **Ionic Care:** This hair dryer features advanced ionic care, which releases negative ions to reduce frizz and enhance shine. This function is active during operation.
5. **Cool Shot:** Press and hold the cool shot button to release a burst of cool air. This helps to set your hairstyle and add shine.
6. **Power Off:** After use, slide the speed setting switch to '0' to turn off the appliance and unplug it from the mains socket.

## MAINTENANCE AND CLEANING

Regular cleaning ensures optimal performance and extends the life of your hair dryer.

1. **Unplug:** Always unplug the appliance before cleaning.
2. **Clean the Air Inlet Grille:** Regularly remove any hair or dust that has accumulated on the air inlet grille (at the back of the dryer) using a soft brush or a damp cloth. This prevents overheating and maintains airflow.
3. **Clean the Housing:** Wipe the main body of the hair dryer with a damp cloth. Do not use abrasive cleaning agents or solvents.
4. **Storage:** Store the appliance in a dry, safe place, away from dust and moisture. You can use the hanging loop for convenient storage.

## TROUBLESHOOTING

If you encounter issues with your hair dryer, refer to the following common problems and solutions.

Problem	Possible Cause	Solution
---------	----------------	----------

Problem	Possible Cause	Solution
The appliance does not switch on.	No power supply.	Check if the plug is correctly inserted into the wall socket. Ensure the wall socket is functional.
The airflow is weak or stops.	Air inlet grille is blocked by dust or hair.	Unplug the appliance and clean the air inlet grille as described in the Maintenance section.
The appliance overheats and switches off.	Overheating protection activated.	Unplug the appliance and let it cool down for a few minutes. Clean the air inlet grille. If the problem persists, contact customer support.

## SPECIFICATIONS

Technical details for the Philips Series 3000 Hair Dryer BHD351/10.

- **Model:** BHD351/10 (Note: Product specifications may list BHD351/13, which is a variant of the same series)
- **Power:** 2100 Watts
- **Voltage:** Check appliance label for specific voltage range.
- **Number of Heat Settings:** 3 (Cool, Warm, Hot)
- **Number of Speed Settings:** 2 (Gentle, Strong)
- **Special Features:** ThermoProtect attachment, Advanced Ionic Care, Cool air shot, Compact design
- **Material:** Plastic
- **Product Dimensions:** Approximately 9 x 29.5 x 21.5 cm
- **Item Weight:** Approximately 0.62 Kilograms
- **Country of Origin:** China

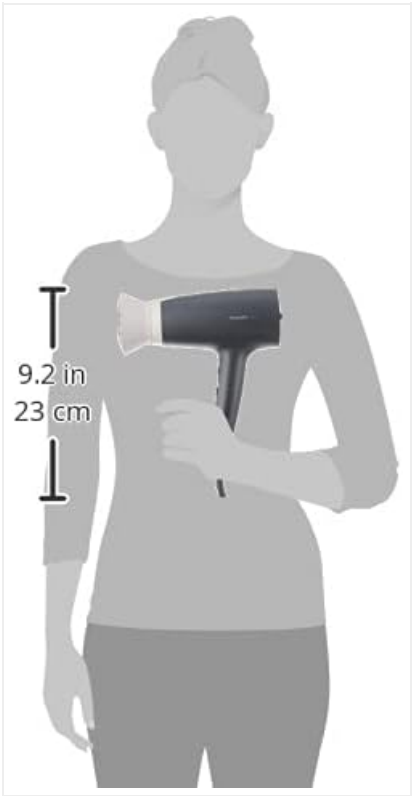


Image: A diagram illustrating the dimensions of the Philips hair dryer, showing a height of 9.2 inches (23 cm). This provides a visual reference for the product's size.

# WARRANTY AND SUPPORT

---

Philips offers a standard warranty for this product. For detailed warranty terms and conditions, please refer to the warranty card included with your purchase or visit the official Philips website.

For product support, spare parts, or to register your product, please visit [www.philips.com/support](https://www.philips.com/support) or contact your local Philips customer service center. Keep your proof of purchase for warranty claims.

